

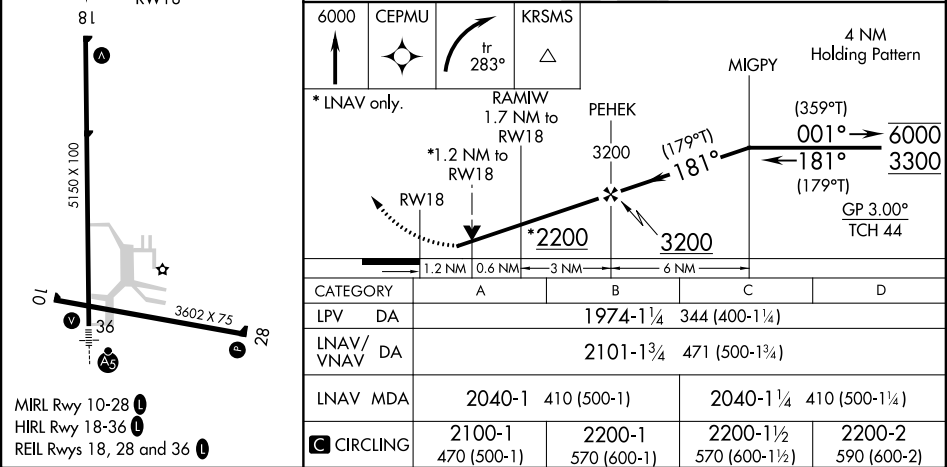
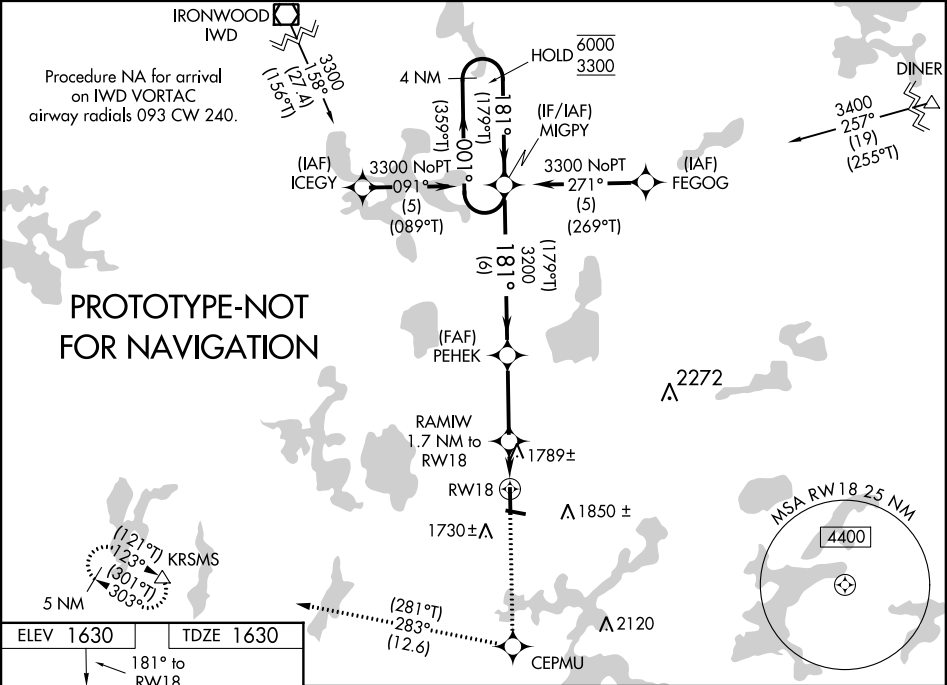
Flight Procedure Tracking Form		Action: FLIGHT CHECK	Task Type: IAP	Date Open: 11/09/2018	Task #: 2018110928580402001	Request #: 20181109285804
Procedure: RNAV (GPS) RWY 18 AMDT 0B			Airport ID: KARV	Airport: LAKELAND/NOBLE F LEE MEMORIAL FIELD		Reimbursable #: NO
City: MINOCQUA- WOODRUFF	ST: WI	GPS #:	Estimated Chart Date: 10/10/2019			FICO #:
Fac ID: N/A		Fac. Type:			Specialist: BARBARA GORMAN	
Procedure Review						
	Rec'd	Rel'd	Full Name	Comments		
Lead:	02/25/2019			QUALITY Digitally signed by		
QA:				24 DAVID W SAUER		
Liaison:				CHECKED May 30, 2019		
Procedure Comments:			Remark Type: INFORMATION			
AMEND TO REMOVE NOTAMS CONTACT: ANDREW HENNING: 405.954.9954						

WAAS CH 72915 W18A	APP CRS 181°	Rwy Idg TDZE Apt Elev	5150 1630 1630
--	------------------------	-----------------------------	---

RNAV (GPS) RWY 18

LAKELAND/NOBLE F LEE MEMORIAL FIELD (ARV)

RNP APCH.		MISSED APPROACH: Climb to 6000 direct CEPMU and right turn on track 283° to KRSMS and hold, continue climb-in-hold to 6000.
AWOS-3 121.125	MINNEAPOLIS CENTER 133.65 281.5	UNICOM 122.7 (CTAF) 0



RNAV (GPS) RWY 18

WAAS CH 72915 W18A	APP CRS 181°	Rwy Idg TDZE 1630 Apt Elev 1630
--	------------------------	---

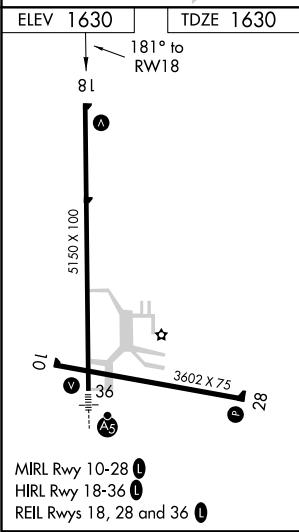
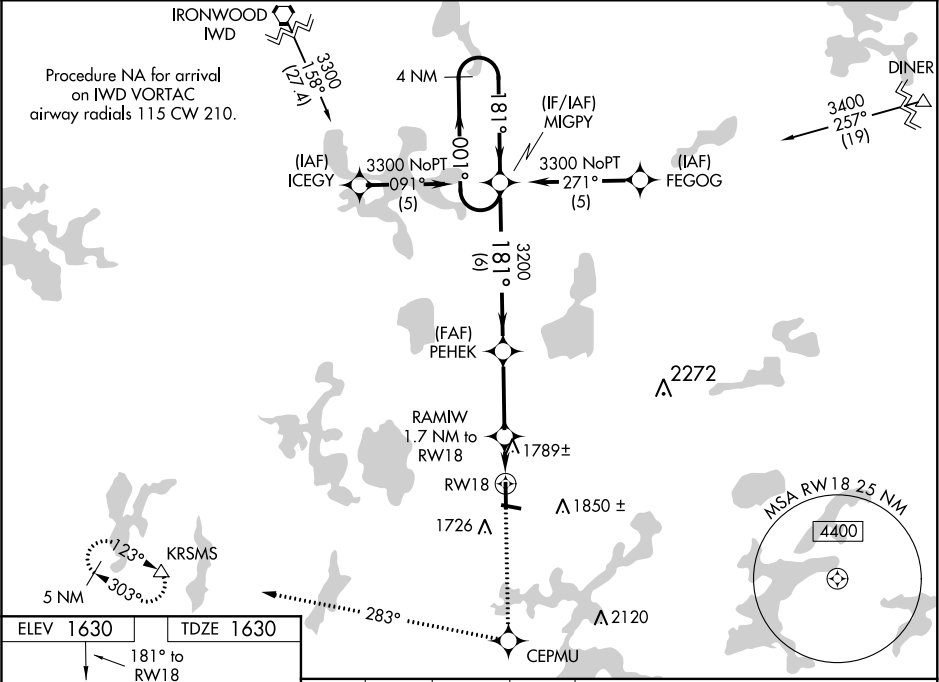
RNAV (GPS) RWY 18

LAKELAND/NOBLE F LEE MEMORIAL FIELD (A.R.V)

⚠ For uncompensated Baro-VNAV systems, LNAV/VNAV NA below -18°C (0°F) or above 45°C (113°F). DME/DME RNP-0.3 NA. Rwy 18 helicopter visibility reduction below ¾ SM NA. When local altimeter setting not received, use Eagle River altimeter setting and increase all DA 47 feet and all MDA 60 feet, increase LNAV Cat D and Circling Cat C visibility ¼ mile. Baro-VNAV and VDP NA when using Eagle River altimeter setting. Circling Rwy 10, 28 NA at night.

MISSED APPROACH: Climb to 6000 direct CEPMU and right turn via track 283° to KRSMS and hold, continue climb-in-hold to 6000.

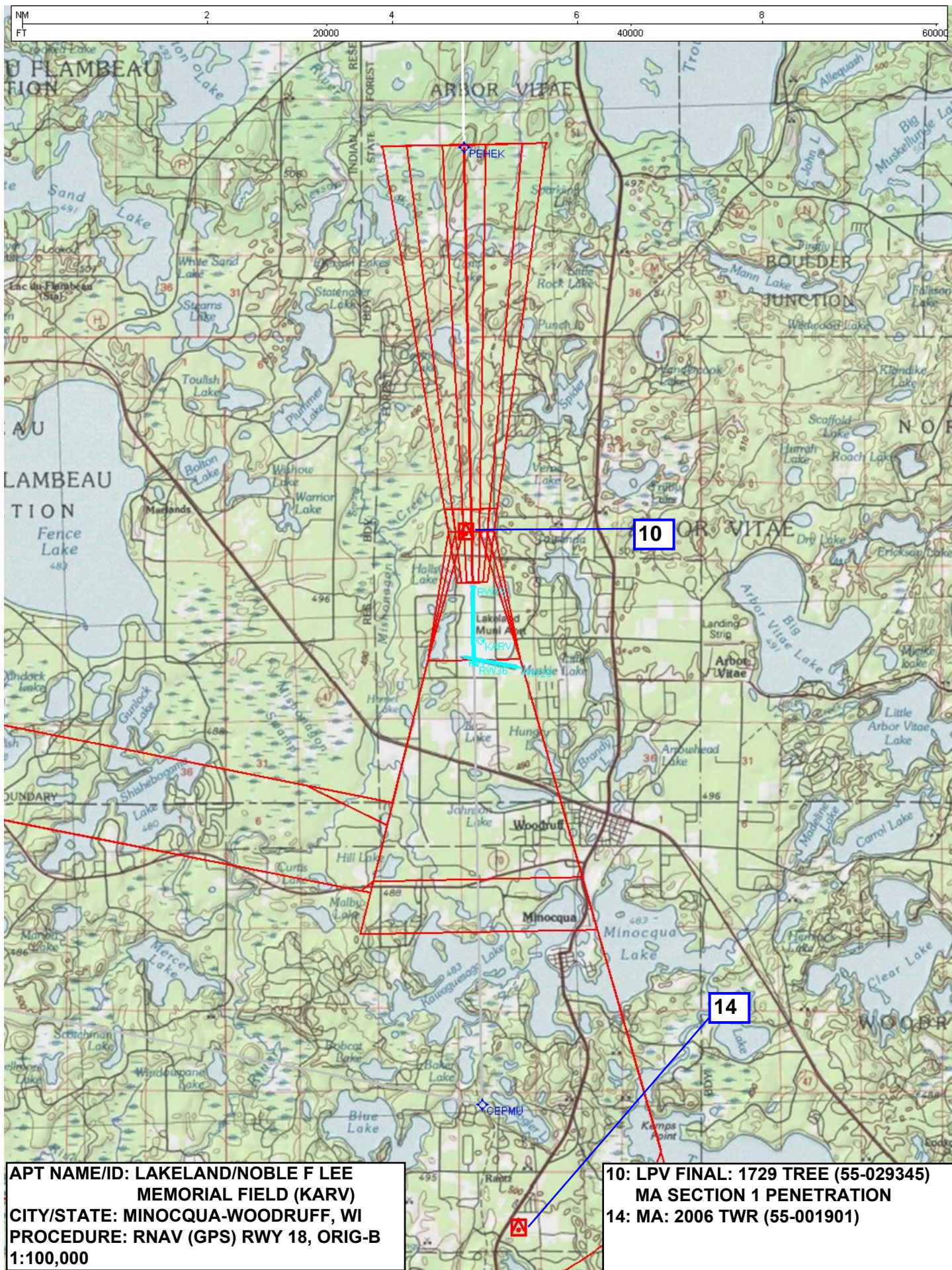
AWOS-3 121.125	MINNEAPOLIS CENTER 133.65 281.5	UNICOM 122.7 (CTAF) 0
--------------------------	---	---------------------------------

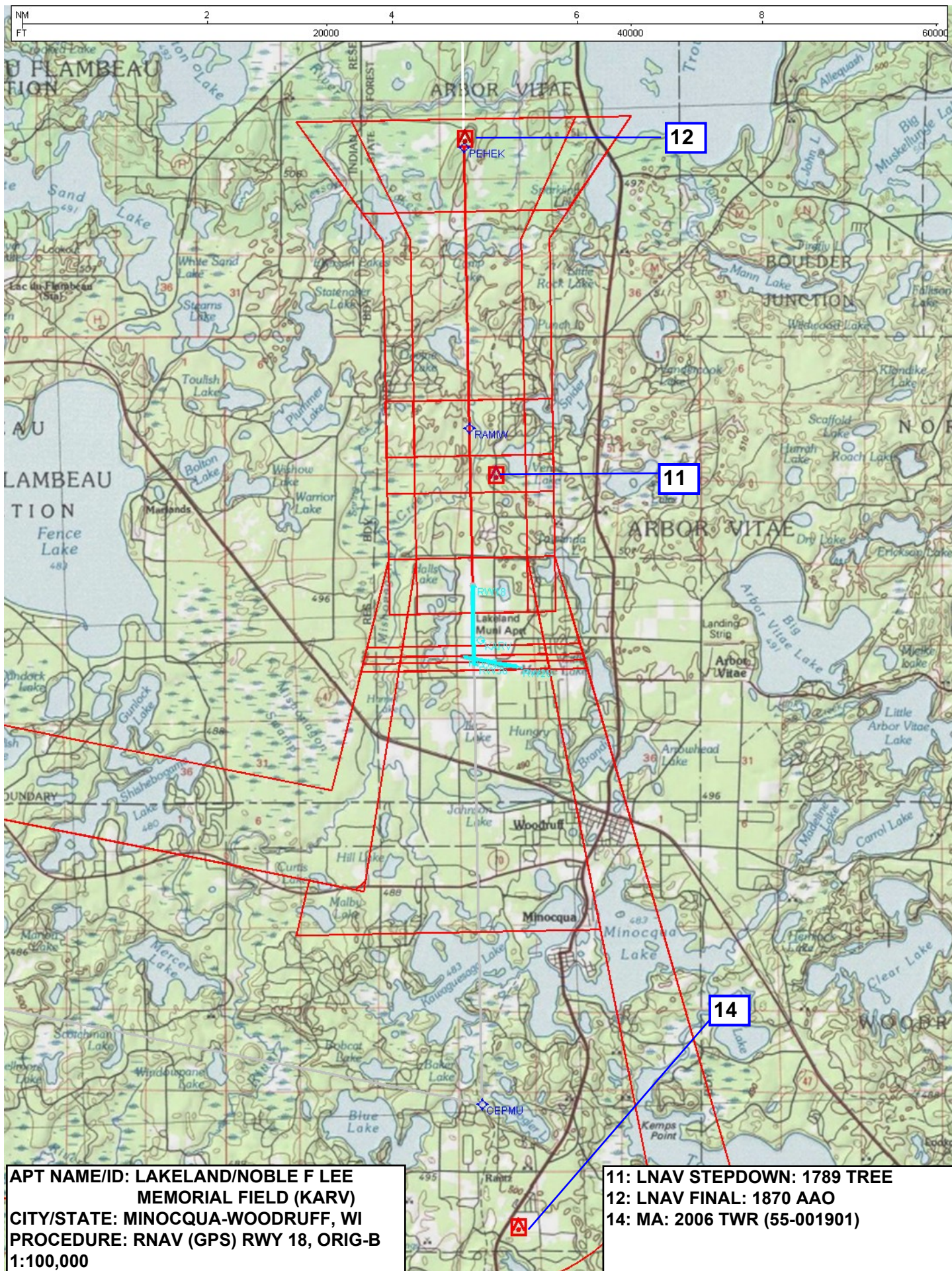


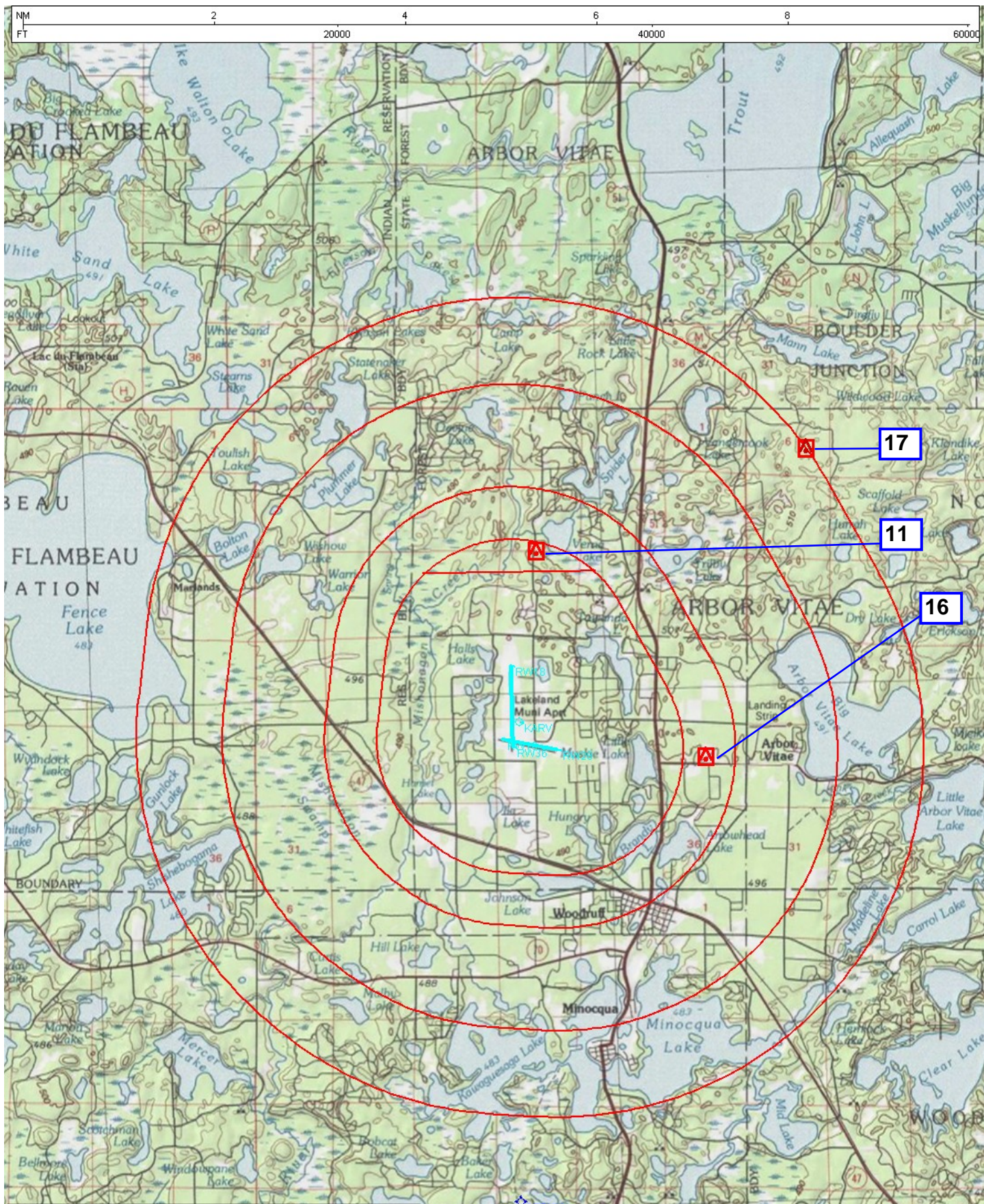
6000	CEPMU	KRSMS	4 NM Holding Pattern		
↑	✦	↷ tr 283°			
* LNAV only					
<p>Diagram illustrating a flight path starting from RW18, turning 181°, and then 001°. The path includes distances of 1.2 NM, 0.6 NM, 3 NM, and 6 NM. Altitudes are marked as 2200, 3200, and 3300. A 4 NM Holding Pattern is shown. The path is labeled with *LNAV only, *2200, 3200, 3300, and GP 3.00° TCH 44.</p>					
CATEGORY	A		B	C	D
LPV DA	1974-1¼		344 (400-1¼)		
LNAV/VNAV DA	2101-1¾		471 (500-1¾)		
LNAV MDA	2040-1	410 (500-1)	2040-1¼	410 (500-1¼)	
CIRCLING	2100-1	470 (500-1)	2200-1½ 570 (600-1½)	2200-2 570 (600-2)	

EC-3, 28 MAR 2019 to 25 APR 2019

EC-3, 28 MAR 2019 to 25 APR 2019







APT NAME/ID: LAKELAND/NOBLE F LEE
MEMORIAL FIELD (KARV)
CITY/STATE: MINOCQUA-WOODRUFF, WI
PROCEDURE: RNAV (GPS) RWY 18, ORIG-B
1:100,000

11: CIRC CAT A: 1789 TREE
16: CIRC CAT B/C: 1850 STACK (55-000841)
17: CIRC CAT D: 1910 AAO