

Flight Procedure Tracking Form		Action: AMENDMENT	Task Type: IAP	Date Open: 11/06/2018	Task #: 2018110632035801001	Request #: 20181106320358
Procedure: ILS OR LOC RWY 24 AMDT 16A			Airport ID: KCGF	Airport: CUYAHOGA COUNTY		Reimbursable #: NO
City: CLEVELAND	ST: OH	GPS #:	Estimated Chart Date: 04/25/2019		FICO #:	
Fac ID: CGF		Fac. Type: ILS			Specialist: MIKE MELSEN	
Procedure Review						
	Rec'd	Rel'd	Full Name	Comments		
Lead:	11/06/2018	12/21/2018	WARDELL HENNING	Digitally signed by QUALITY		
QA:	12/21/2018			WARDELL HENNING 41		
Liaison:				Jan 03, 2019 CHECKED		
Procedure Comments: ENROUTE-NON Remark Type: INFORMATION ABBREVIATED AMENDMENT. PROCESSED IAW AIRCRAFT OPERATIONS GROUP (AJW-33) MEMO, OCTOBER 3, 2018, SUBJECT: FLIGHT INSPECTION REVIEW NOT REQUIRED CONTACT: ANDREW HENNING; AJV-A430 LEAD; 405.954.9954.						

LOC/DME I-CGF 111.1 Chan 48	APP CRS 237°	Rwy Idg TDZE Apt Elev	5000 873 876
---	------------------------	-----------------------------	---

ILS or LOC RWY 24

CUYAHOGA COUNTY (CGF)

RNAV 1.

RNAV 1-GPS or RADAR required for procedure entry.
Aircraft not GPS equipped - RADAR required for procedure entry.

- T** Autopilot coupled approach NA below 2020. Rwy 24 helicopter visibility reduction below $\frac{3}{4}$ SM NA. For inop ALS increase S-LOC Cats C/D to 1 SM.
A

MALSR



MISSED APPROACH:
Climb to 1600 then
climbing left turn to 3100
on CXR VOR/DME R-286
to CXR VOR/DME and
hold.

AWOS-3

119.95

CLEVELAND APP CON

124.0 354.025

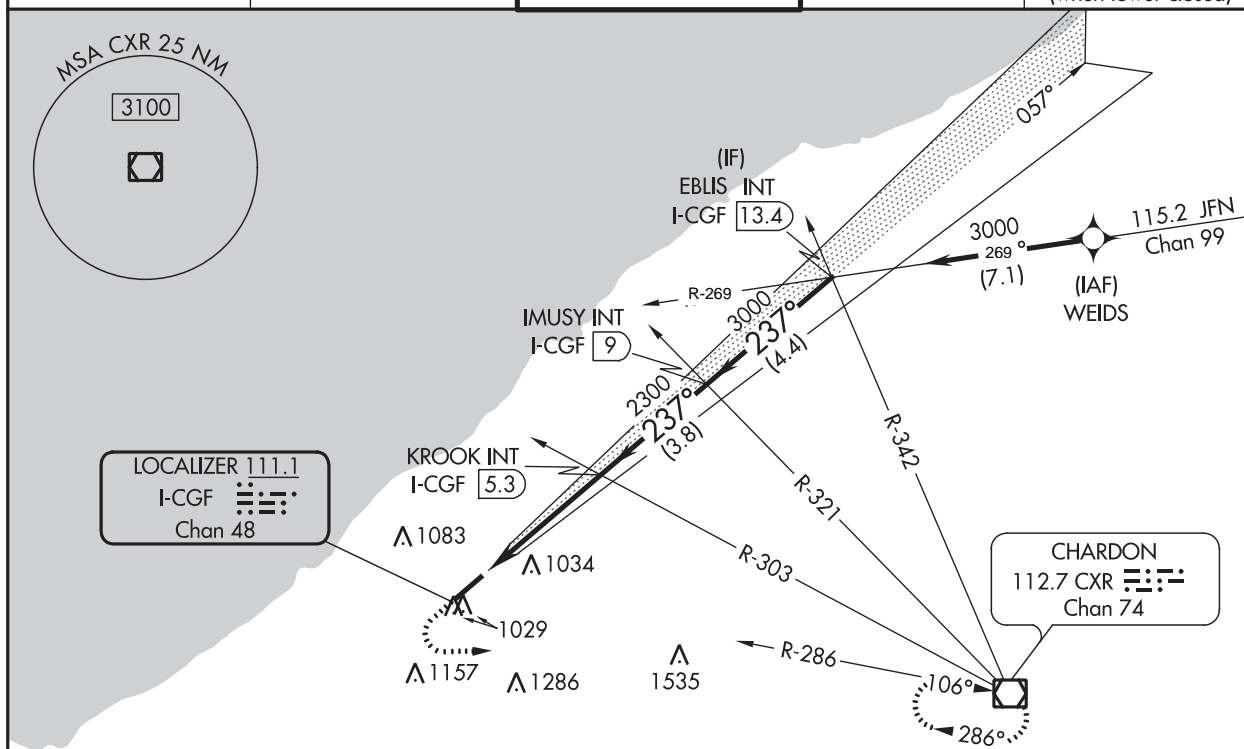
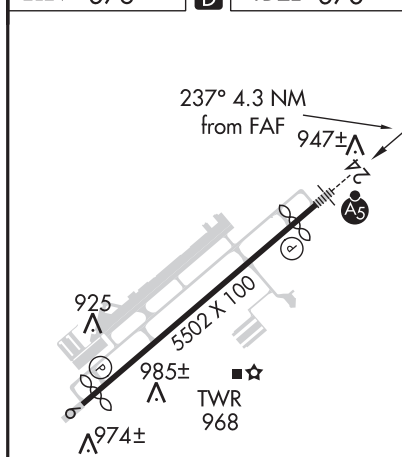
COUNTY TOWER★

118.5 (CTAF) 0

GND CON

121.85

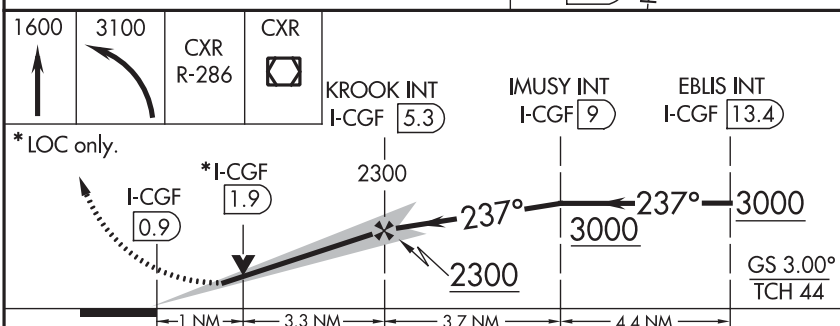
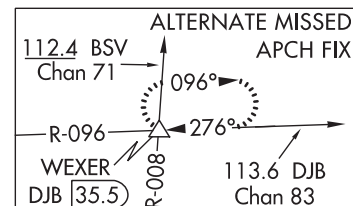
CLNC DEL

121.85
(when tower closed)ELEV 876 **D** TDZE 873

A 1640

2019

A



CATEGORY	A	B	C	D
S-ILS 24	1073- $\frac{1}{2}$	200 (200- $\frac{1}{2}$)		
S-LOC 24	1240- $\frac{1}{2}$	367 (400- $\frac{1}{2}$)	1240- $\frac{5}{8}$	367 (400- $\frac{5}{8}$)
C CIRCLING	1400-1 524 (600-1)	1500-1 624 (700-1)	1560-2 684 (700-2)	1620-2 $\frac{1}{2}$ 744 (800-2 $\frac{1}{2}$)

OLD


CLEVELAND, OHIO

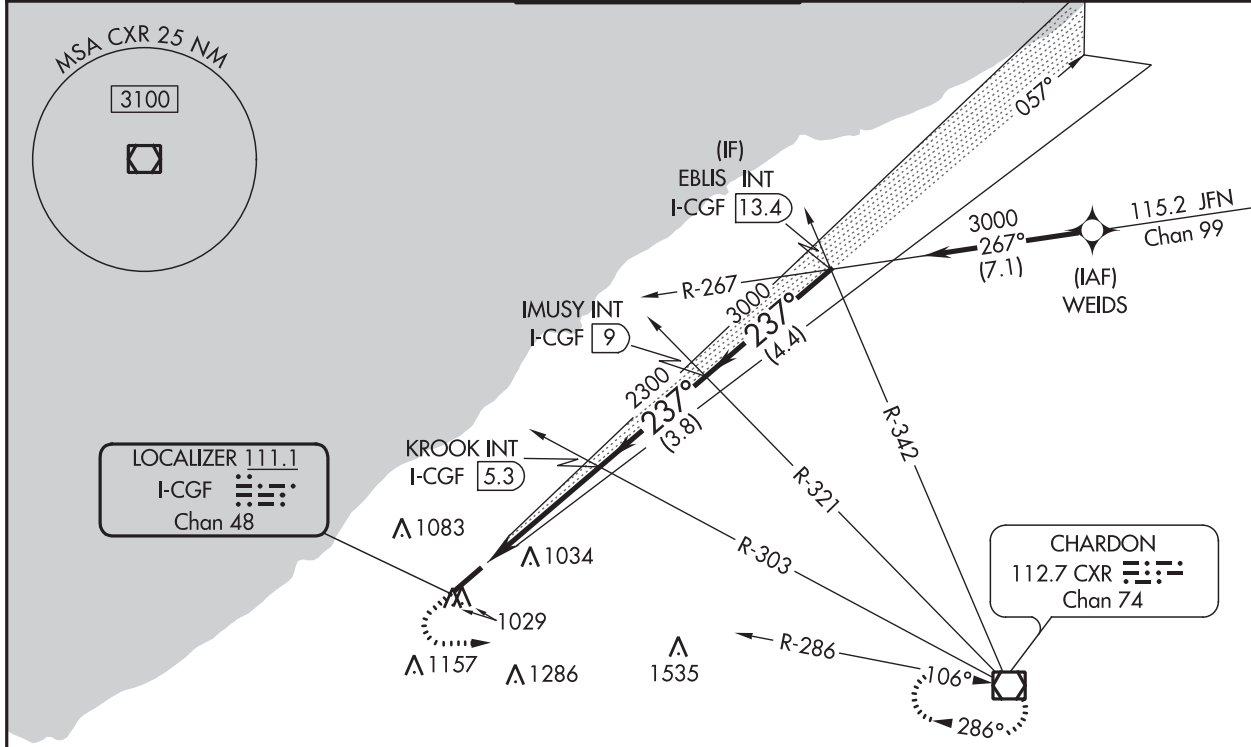
AL-5027 (FAA)

18312

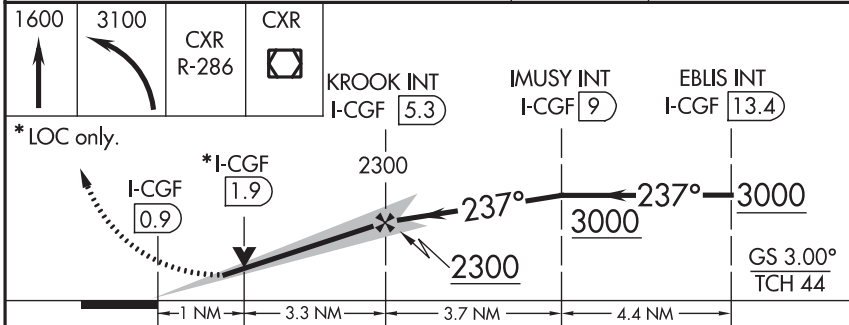
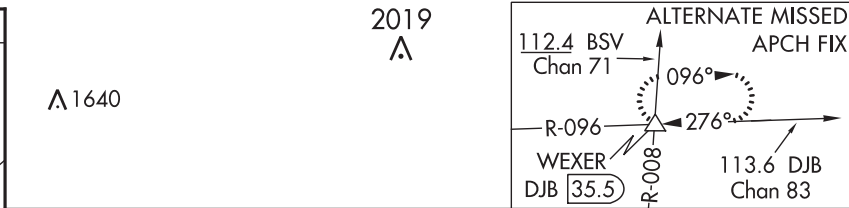
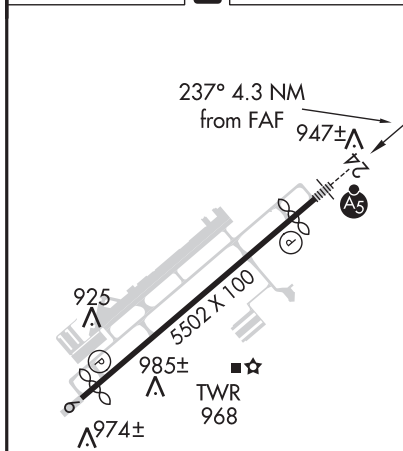
LOC/DME I-CGF 111.1 Chan 48	APP CRS 237°	Rwy Idg TDZE Apt Elev	5000 873 876
---	------------------------	-----------------------------	---

ILS or LOC RWY 24 CUYAHOGA COUNTY (CGF)

RNAV 1.			<div>MALSR</div> <div></div>	<div>MISSED APPROACH:</div> <div>Climb to 1600 then climbing left turn to 3100 on CXR VOR/DME R-286 to CXR VOR/DME and hold.</div>
RNAV 1-GPS or RADAR required for procedure entry. Aircraft not GPS equipped - RADAR required for procedure entry.				
<div><div><div>T</div><div>A</div></div><div>Autopilot coupled approach NA below 2020. Rwy 24 helicopter visibility reduction below ¾ SM NA. For inop ALS increase S-LOC Cats C/D to 1 SM.</div></div>				
AWOS-3 119.95	CLEVELAND APP CON 124.0 354.025	COUNTY TOWER★ 118.5 (CTAF) L	GND CON 121.85	CLNC DEL 121.85 (when tower closed)



ELEV 876	D	TDZE 873
----------	----------	----------



FAF to MAP 4.3 NM					
Knots	60	90	120	150	180
Min:Sec	4:18	2:52	2:09	1:43	1:26
REIL Rwy 6 0 HIRL Rwy 6-24 0					
CATEGORY	A	B	C	D	
S-ILS 24	1073-1/2		200 (200-1/2)		
S-LOC 24	1240-1/2	367 (400-1/2)	1240-5/8	367 (400-5/8)	
C CIRCLING	1400-1 524 (600-1)	1500-1 624 (700-1)	1560-2 684 (700-2)	1620-2 1/2 744 (800-2 1/2)	

CLEVELAND, OHIO
Amdt 16 08NOV18

41°34'N-81°29'W

CUYAHOGA COUNTY (CGF) ILS or LOC RWY 24

EC-2, 06 DEC 2018 to 03 JAN 2019

EC-2, 06 DEC 2018 to 03 JAN 2019