

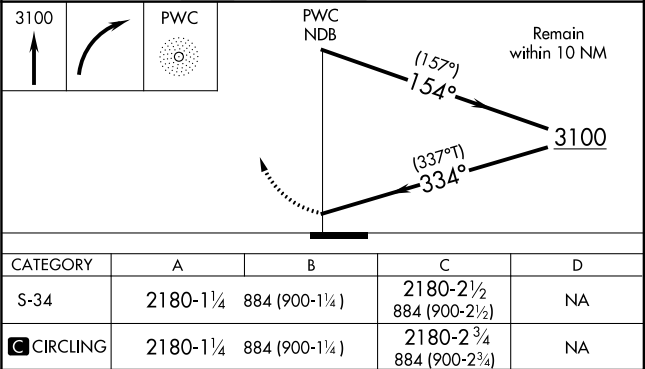
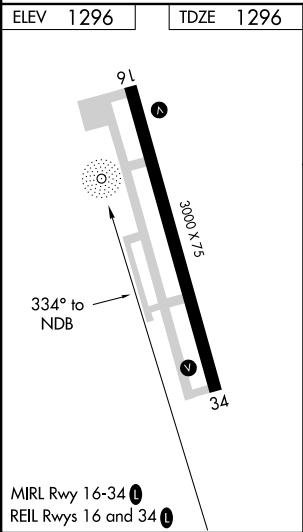
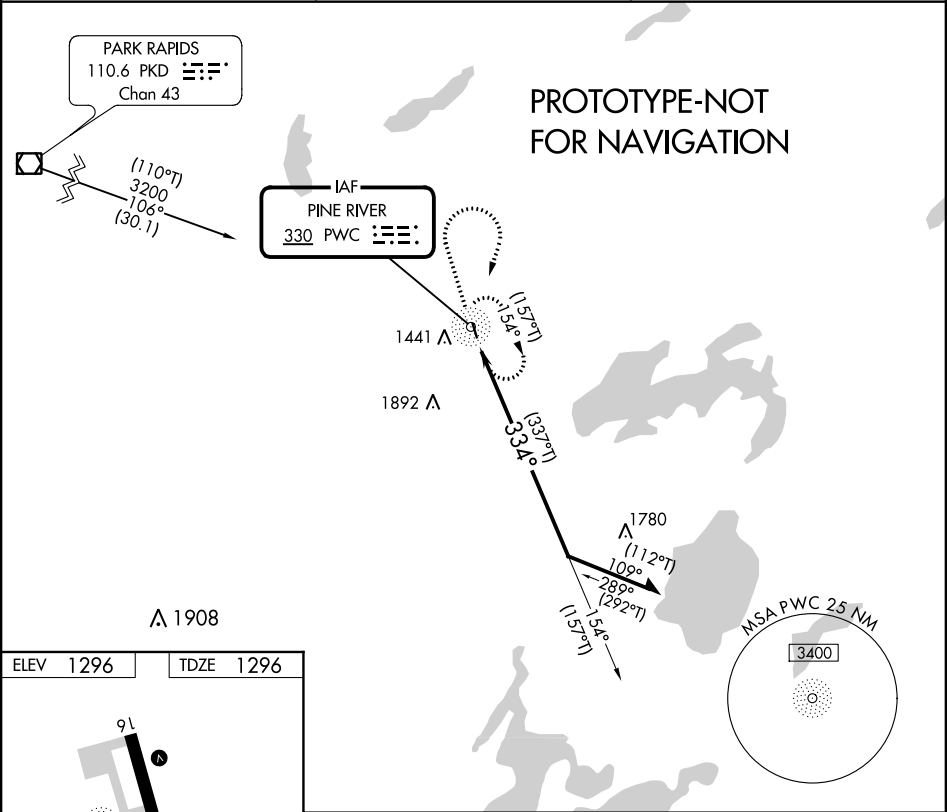
Flight Procedure Tracking Form		Action: FLIGHT CHECK	Task Type: IAP	Date Open: 10/13/2018	Task #: 2018101328932901001	Request #: 20181013289329
Procedure: NDB RWY 34 AMDT 2			Airport ID: KPWC	Airport: PINE RIVER RGNL		Reimbursable #: NO
City: PINE RIVER	ST: MN	GPS #:	Estimated Chart Date: 01/30/2020		FICO #:	
Fac ID: PWC		Fac. Type: NDB			Specialist: DEAN GRACEY	
Procedure Review						
	Rec'd	Rel'd	Full Name	Comments		
Lead:	08/02/2019	08/28/2019	STEVEN SCHUTRUM	Digitally signed by		
QA:	08/28/2019			30 BRYAN W BLUE		
Liaison:				Sep 30, 2019		
Procedure Comments: ENROUTE-NON Remark Type: INFORMATION ACTIVE AIRPORT AND NAVAD DATA USED. CANCEL T-NOTAM 9/1356 CONTACT DAVE DANNER (405) 954-5077.						

NDB PWC	APP CRS	Rwy Idg	3000
330	334°	TDZE	1296
		Apt Elev	1296

NDB RWY 34
PINE RIVER RGNL (PWC)

<div><div></div><div></div></div> <div>Rwy 34 helicopter visibility reduction below ¾ NA.</div>	MISSED APPROACH: Climb to 3100 then right turn direct PWC NDB and hold.
---	---

ASOS-3 118.525	MINNEAPOLIS CENTER 118.05 239.0	CTAF 122.9 0
-------------------	------------------------------------	-----------------



OLD

PINE RIVER, MINNESOTA

AL-9441 (FAA)

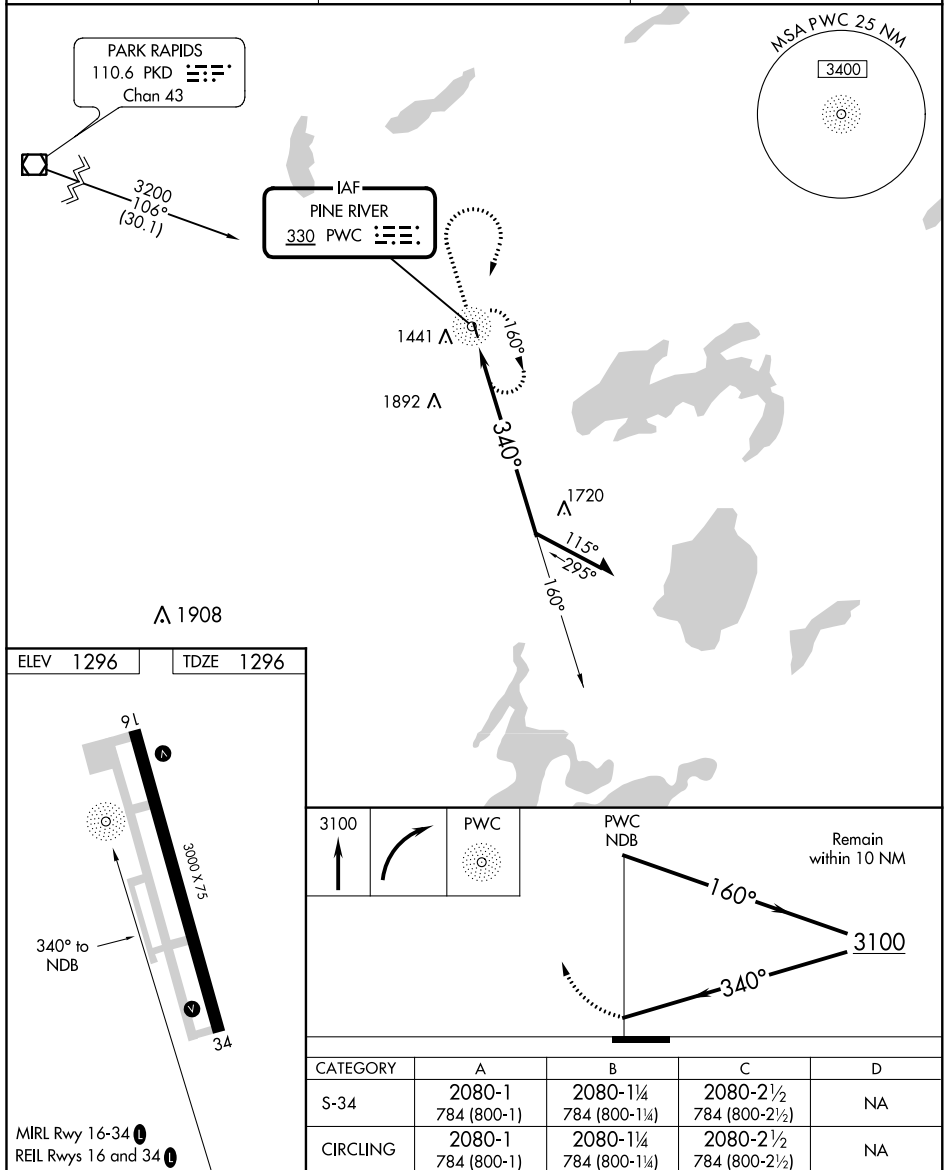
19171

NDB PWC 330	APP CRS 340°	Rwy Idg TDZE Apt Elev	3000 1296 1296
-----------------------	------------------------	-----------------------------	---

NDB RWY 34
PINE RIVER RGNL (PWC)

NA Rwy 34 helicopter visibility reduction below $\frac{3}{4}$ SM NA.	MISSED APPROACH: Climb to 3100 then right turn direct PWC NDB and hold.
---	---

ASOS-3 118.525	MINNEAPOLIS CENTER 118.05 239.0	CTAF 122.9
--------------------------	---	----------------------



NC-1, 15 AUG 2019 to 12 SEP 2019

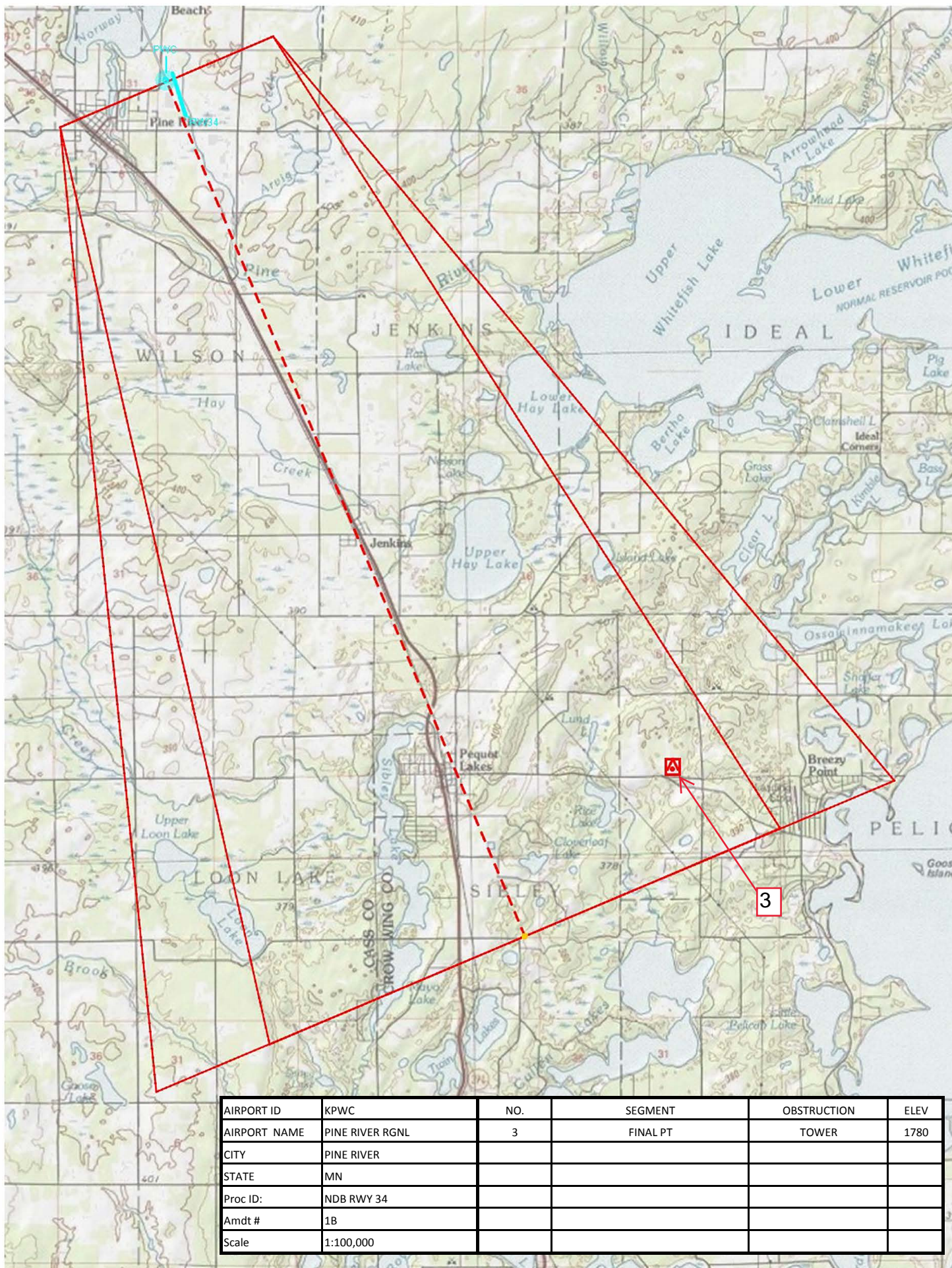
NC-1, 15 AUG 2019 to 12 SEP 2019

PINE RIVER, MINNESOTA

Amdt 1A 17AUG17

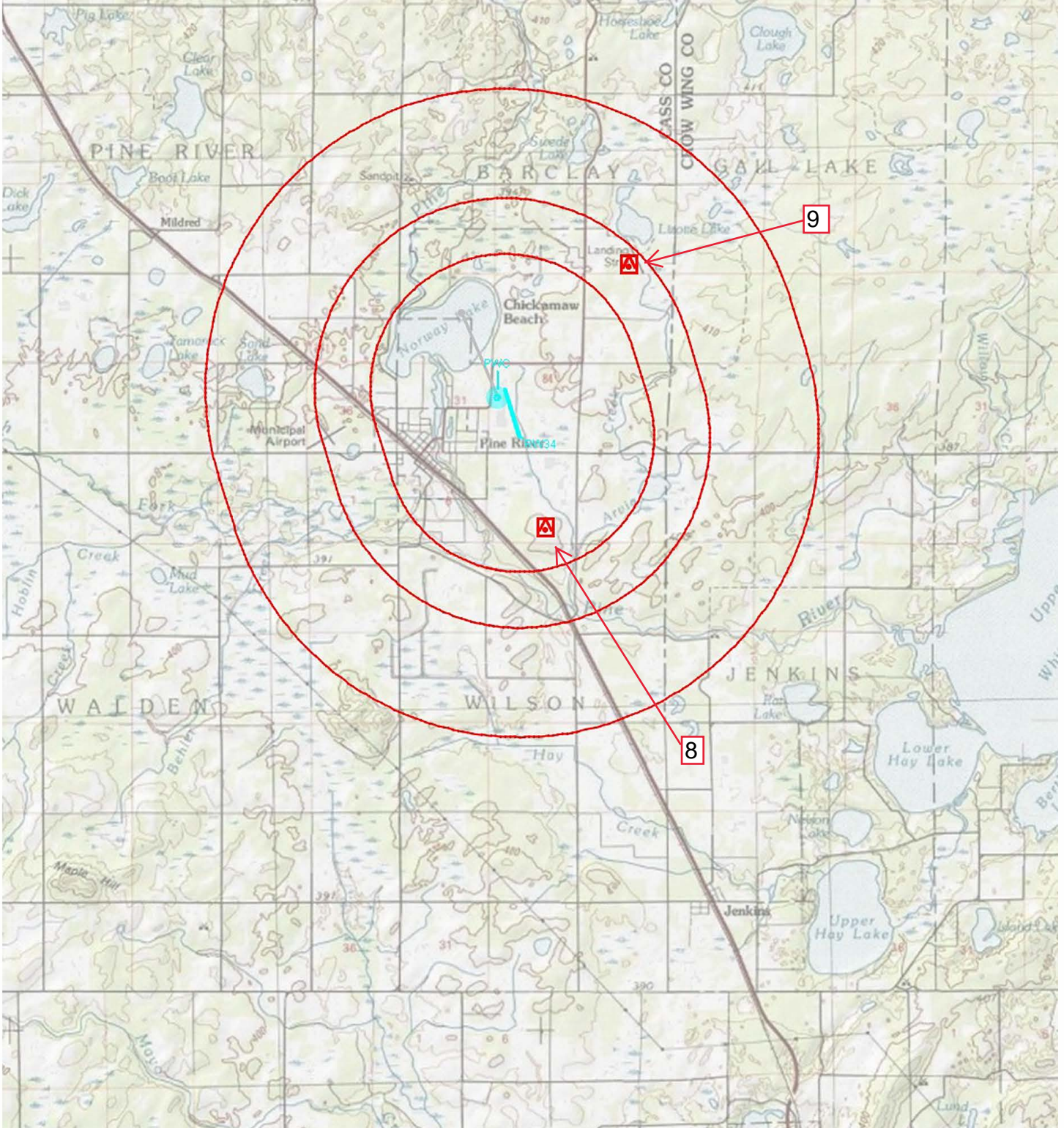
46°43'N-94°23'W

PINE RIVER RGNL (PWC)
NDB RWY 34



AIRPORT ID	KPWC	NO.	SEGMENT	OBSTRUCTION	ELEV
AIRPORT NAME	PINE RIVER RGNL	3	FINAL PT	TOWER	1780
CITY	PINE RIVER				
STATE	MN				
Proc ID:	NDB RWY 34				
Amdt #	1B				
Scale	1:100,000				

AIRPORT ID	KPWC	NO.	SEGMENT	OBSTRUCTION	ELEV
AIRPORT NAME	PINE RIVER RGNL	8	CIRC CAT A	TREE	1449
CITY	PINE RIVER	9	CIRC CAT B/C	AAO	1539
STATE	MN				
Proc ID:	NDB RWY 34				
Amdt #	1B				
Scale	1:100,000				





AIRPORT ID	KPWC	NO.	SEGMENT	OBSTRUCTION	ELEV
AIRPORT NAME	PINE RIVER RGNL	1	PKD FEEDER	TOWER	2138
CITY	PINE RIVER	3	FAS	TOWER	1780
STATE	MN	4	PT HOLD	TOWER	1822
Proc ID:	NDB RWY 34	6	MISSED LVL SFC	TOWER	1713
Amdt #	1B				
Scale	1:500,000				

