

<b>Flight Procedure Tracking Form</b>		<b>Action:</b> AMENDMENT	<b>Task Type:</b> SID	<b>Date Open:</b> 11/28/2018	<b>Task #:</b> 2018100529993501005	<b>Request #:</b> 20181005299935
<b>Procedure:</b> SID ELANR (RNAV) SIX GARY IN KGYG			<b>Airport ID:</b> KGYG	<b>Airport:</b> GARY/CHICAGO INTL		<b>Reimbursable #:</b> NO
<b>City:</b> GARY	<b>ST:</b> IN	<b>GPS #:</b>	<b>Estimated Chart Date:</b> 10/10/2019		<b>FICO #:</b>	
<b>Fac ID:</b> N/A		<b>Fac. Type:</b>		<b>Specialist:</b> NICHOLAS JACKSON		
<b>Procedure Review</b>						
	<b>Rec'd</b>	<b>Rel'd</b>	<b>Full Name</b>	<b>Comments</b>		
<b>Lead:</b>	12/27/2018	06/03/2019	DONALD LANIER			
<b>QA:</b>	06/03/2019	06/04/2019	KISSY MAXFIELD			
<b>Liaison:</b>						
<b>Procedure Comments:</b> ENROUTE <b>Remark Type:</b> INFORMATION  ABBREVIATED AMENDMENT  FLIGHT INSPECTION REVIEW NOT REQUIRED - PROCESS IAW AIRCRAFT OPERATIONS GROUP (AJW-33) MEMO, OCT 3, 2018.  CONTACTS: DONALD LANIER 405.954.8242 OR LONNIE EVERHART 405.954.4576  08/07/2019: THIS IS A CORRECTED COPY OF THE FORM APPROVED ON 05/10/2019. 1. ADDED TRACK (173.52) UNDER DP ROUTE DESCRIPTION.						



(ELANR5.ELANR) 18312

AL-748 (FAA)

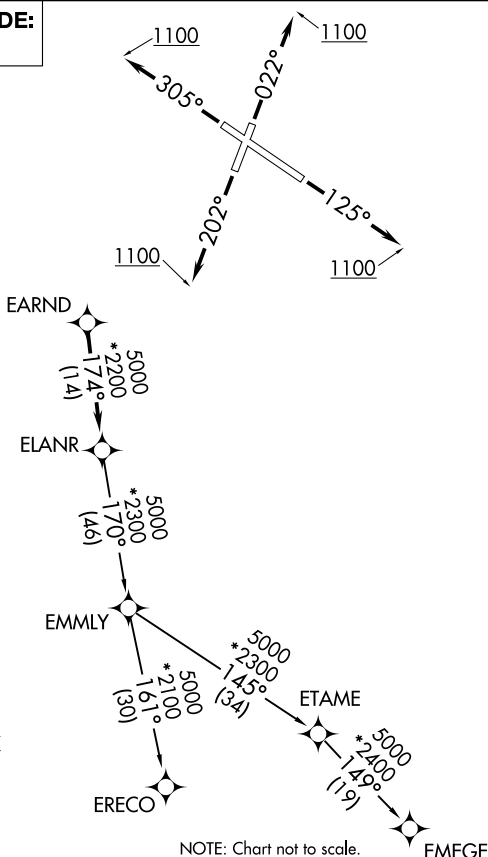
GARY/CHICAGO INTL (GYY)

GARY, INDIANA

# ELANR FIVE DEPARTURE (RNAV)

ATIS  
134.575  
GND CON  
121.9  
GARY TOWER ★  
125.6  
CHICAGO DEP CON  
133.1 285.6

**TOP ALTITUDE:  
3000**



## TAKEOFF MINIMUMS:

- Rwy 2: Standard with minimum climb of 323' per NM to 2700.  
Rwy 12: Climb of 330' per NM to 2700.  
Rwy 20: Standard with minimum climb of 350' per NM to 2700.  
Rwy 30: Climb of 320' per NM to 2700.

- NOTE: RADAR required.  
NOTE: DME/DME/IRU or GPS required.  
NOTE: RNAV 1.  
NOTE: Turbojet departures maintain 250K until advised by ATC.

NOTE: Chart not to scale.

## DEPARTURE ROUTE DESCRIPTION

TAKEOFF RUNWAY 2: Climb heading 022° to 1100, then as assigned by ATC, for vectors to EARND. Thence. . .

TAKEOFF RUNWAY 12: Climb heading 125° to 1100, then as assigned by ATC, for vectors to EARND. Thence. . .

TAKEOFF RUNWAY 20: Climb heading 202° to 1100, then as assigned by ATC, for vectors to EARND. Thence. . .

TAKEOFF RUNWAY 30: Climb heading 305° to 1100, then as assigned by ATC, for vectors to EARND. Thence. . .

. . . on track 174° to ELANR, then on (transition). Maintain 3000.  
Expect filed altitude 10 minutes after departure.

EMEGE TRANSITION (ELANR5.EMEGE):

EMMLY TRANSITION (ELANR5.EMMLY): (For aircraft inbound to Indianapolis Terminal Area, or as assigned by ATC.)

ERECO TRANSITION (ELANR5.ERECO):

ELANR FIVE DEPARTURE (RNAV)

(ELANR5.ELANR) 08NOV18

GARY, INDIANA

GARY/CHICAGO INTL (GYY)