

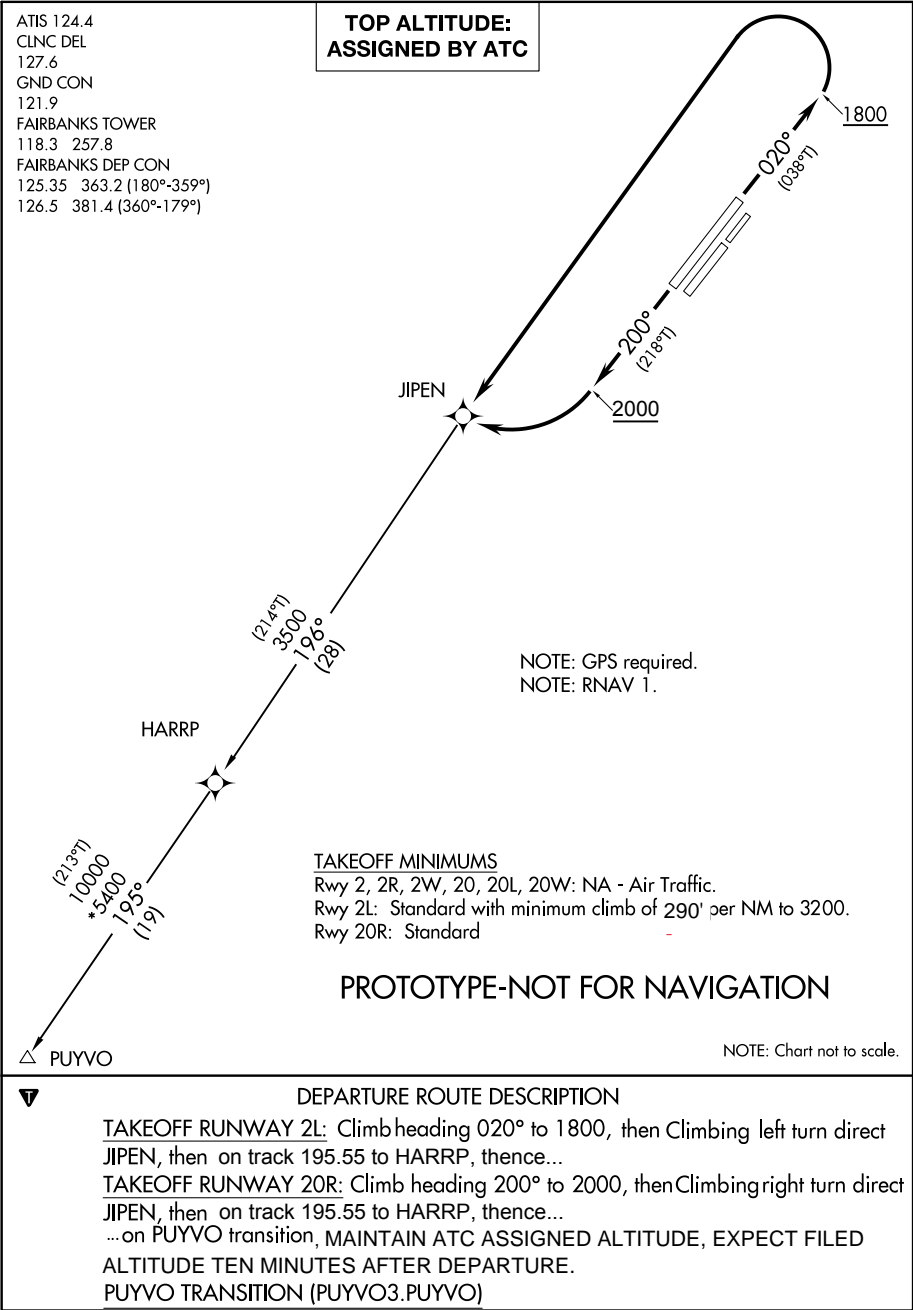
Flight Procedure Tracking Form		Action: FLIGHT CHECK	Task Type: SID	Date Open: 09/27/2018	Task #: 2018092729634601005	Request #: 20180927296346
Procedure: SID PUYVO (RNAV) THREE FAIBANKS AK PAFA			Airport ID: PAFA	Airport: FAIRBANKS INTL		Reimbursable #: NO
City: FAIRBANKS	ST: AK	GPS #:	Estimated Chart Date: 06/20/2019		FICO #:	
Fac ID: N/A		Fac. Type:			Specialist: HERMAN ROGERS	
Procedure Review						
	Rec'd	Rel'd	Full Name	Comments		
Lead:	09/27/2018	10/19/2018	WARDELL HENNING			
QA:	10/19/2018					
Liaison:						
Procedure Comments: ENROUTE Remark Type: INFORMATION ACTIVE DATA USED CONTACT: PAT MULQUEEN/ANDREW HENNING AJV-543 405.954.4073/9954						

(PUYVO3.PUYVO) FIG

PUYVO THREE DEPARTURE (RNAV)

AL-1234 (FAA)

FAIRBANKS INTL (FAI) (PAFA)
FAIRBANKS, ALASKA



PUYVO THREE DEPARTURE (RNAV)
(PUYVO3.PUYVO) FIG

FAIRBANKS, ALASKA
FAIRBANKS INTL (FAI) (PAFA)

(PUYVO2.PUYVO) 15344

PUYVO TWO DEPARTURE (RNAV)

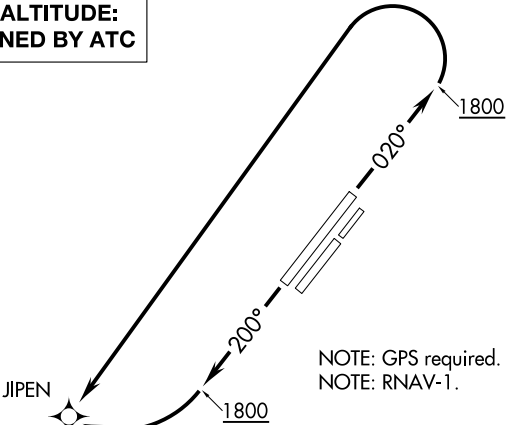
SL-1234 (FAA)

FAIRBANKS INTL (FAI) (PAFA)
FAIRBANKS, ALASKA

ATIS 124.4
CLNC DEL
127.6
GND CON
121.9
FAIRBANKS TOWER
118.3 257.8
FAIRBANKS DEP CON
125.35 363.2 (180°-359°)
126.5 381.4 (360°-179°)

TOP ALTITUDE:
ASSIGNED BY ATC

TAKEOFF MINIMUMS
Rwy 2L: Standard with minimum climb
of 500' per NM to 3100.
Rwy 20R: Standard with minimum climb
of 500' per NM to 1800.



NOTE: GPS required.
NOTE: RNAV-1.

TAKEOFF OBSTACLE NOTES

Rwy 2L: Building 330' from DER, 251' left of centerline, 13' AGL/448' MSL.
Trees beginning 2256' from DER, 937' right of centerline, up to 84' AGL/517' MSL.
Pole, transmission line, catenary, and trees beginning 1961' from DER, 666' left of centerline, up to 78' AGL/514' MSL.
Rwy 20R: Building 7' from DER, 424' right of centerline, 22' AGL/447' MSL.
Light and navaid 10' from DER, 65' right of centerline, 1' AGL/437' MSL.
Light 10' from DER, 64' left of centerline, 1' AGL/436' MSL.
Trees beginning 1093' from DER, 786' left of centerline, up to 54' AGL/483' MSL.
Trees beginning 1799' from DER, 714' right of centerline, up to 66' AGL/492' MSL.

NOTE: Chart not to scale.

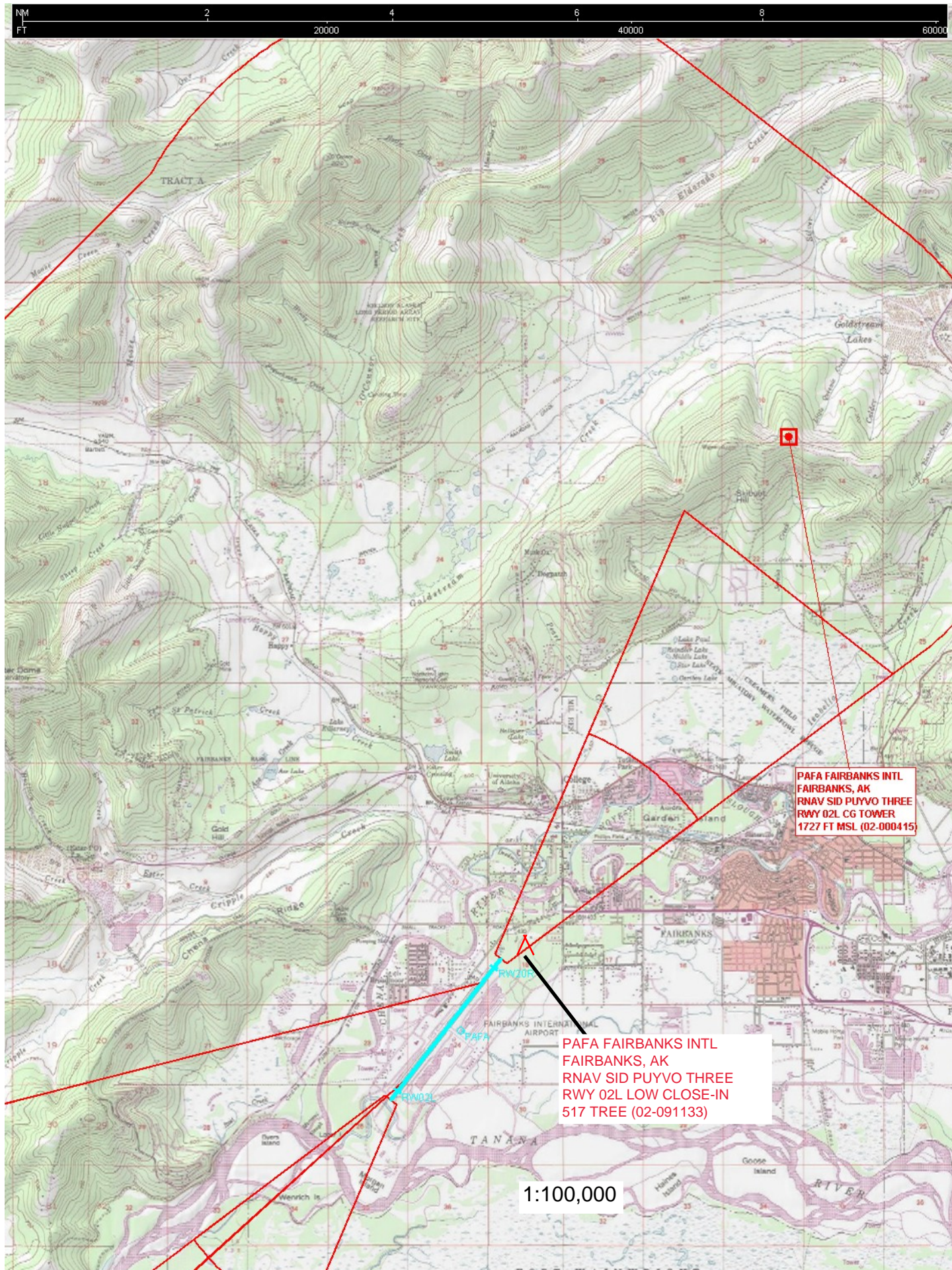


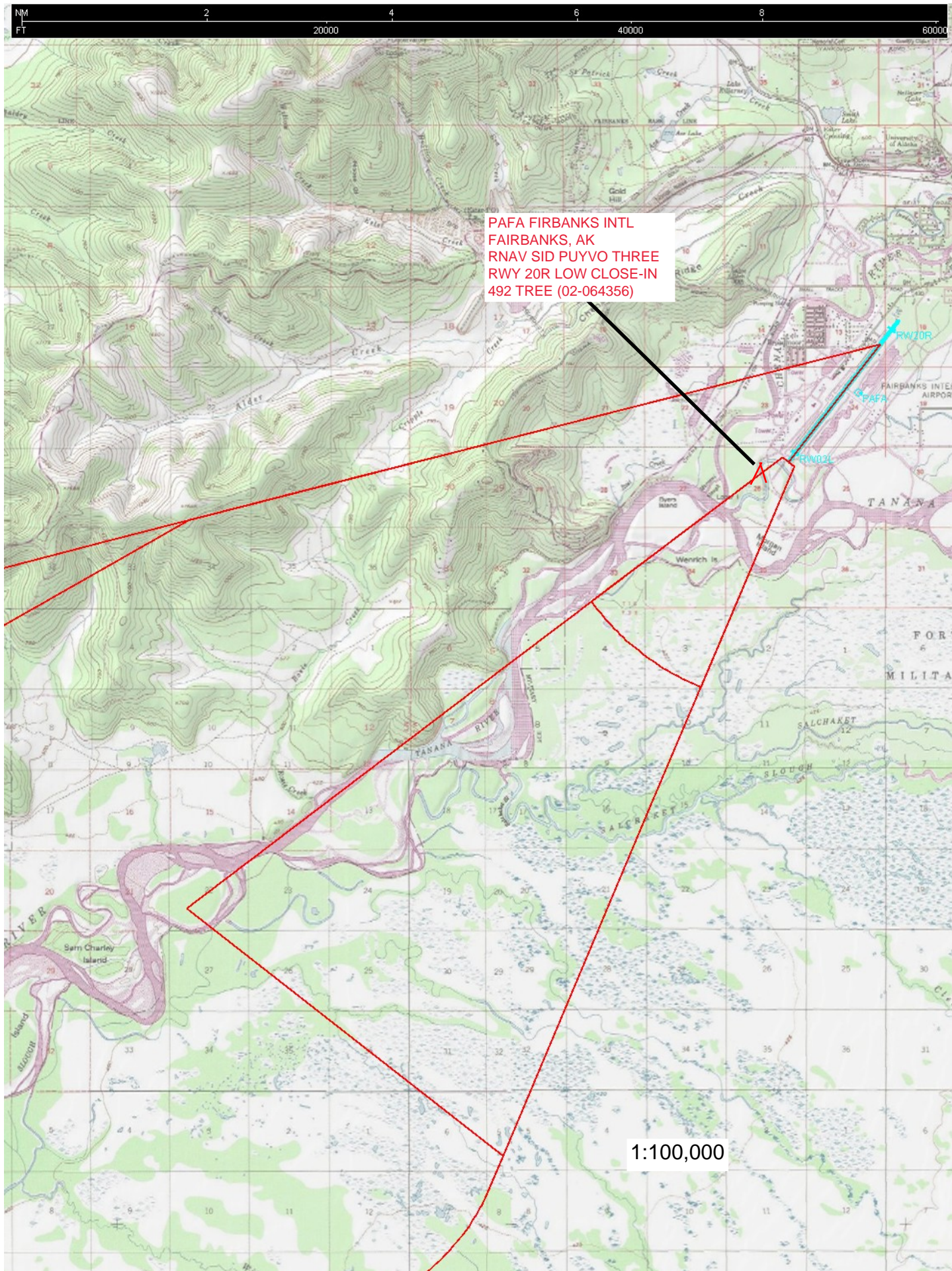
DEPARTURE ROUTE DESCRIPTION

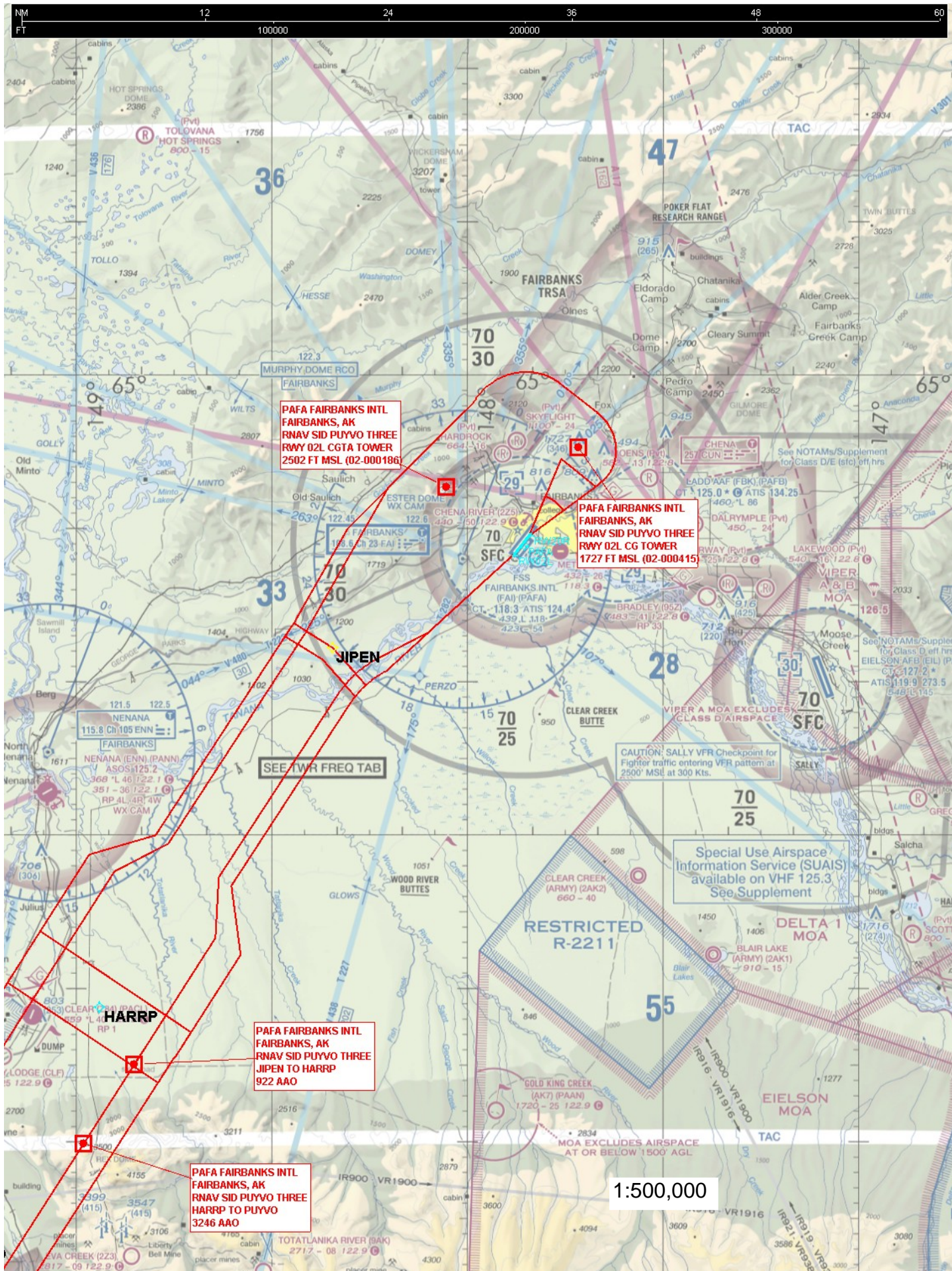
TAKEOFF RUNWAY 2L: Climb heading 020° to 1800, then left turn direct JIPEN, then on PUYVO transition.
TAKEOFF RUNWAY 20R: Climb heading 200° to 1800, then right turn direct JIPEN, then on PUYVO transition.
PUYVO TRANSITION (PUYVO2.PUYVO)

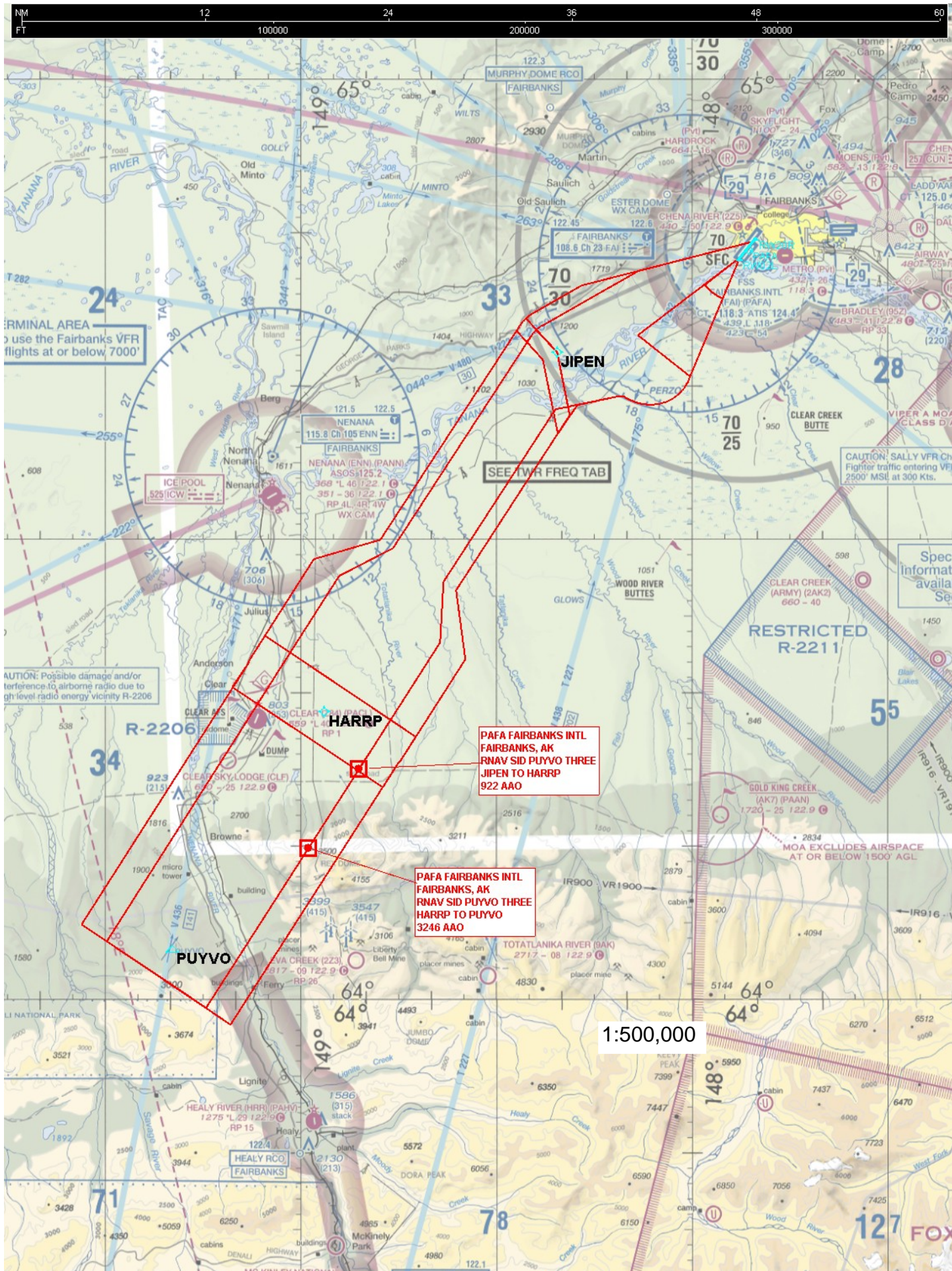
PUYVO TWO DEPARTURE (RNAV)
(PUYVO2.PUYVO) 15344

FAIRBANKS, ALASKA
FAIRBANKS INTL (FAI) (PAFA)









Periodic Review

Scott Lindholm

07-25-17

FAIRBANKS INTL AIRPORT

FAIRBANKS, AK (PAFA)

PUYVO TWO _RNAV_

Summary/Findings

FULL REVIEW

AIRPORT MAG VAR WITHIN TOLERANCE: 18E/2020; 17E/2020

1. NOTAM: NO

2. AMENDMENT: NO

- PROCEDURE GOOD AS PUBLISHED

3. ADDITIONAL INFORMATION:

- UPDATE DEPARTURE OBSTACLE NOTES WHEN FEASIBLE.

REVIEWED BY SCOTT LINDHOLM (LEIDOS)

Actions/Notes