

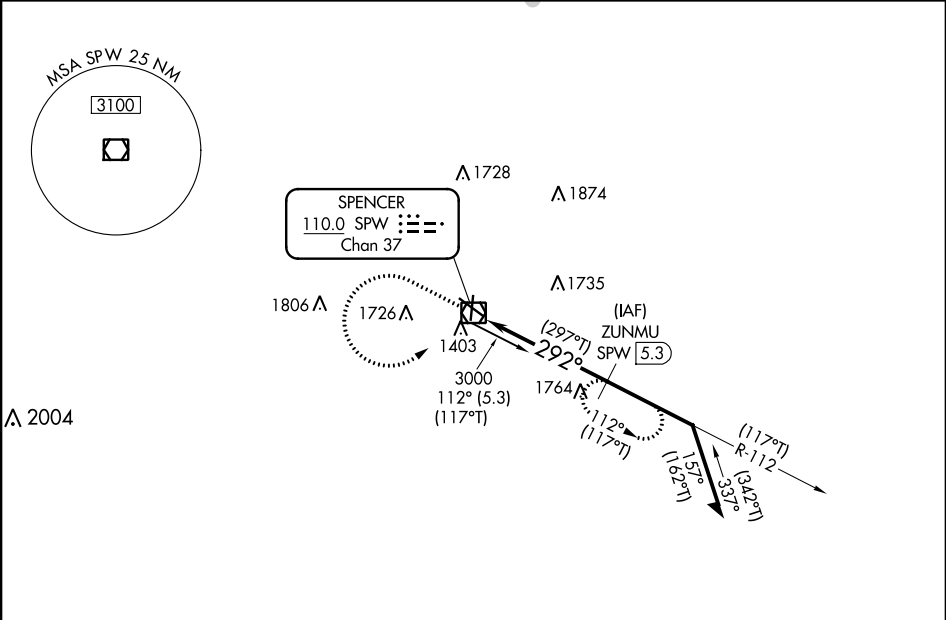
Flight Procedure Tracking Form		Action: AMENDMENT	Task Type: IAP	Date Open: 09/06/2018	Task #: 2018090633853101001	Request #: 20180906338531
Procedure: VOR RWY 30 AMDT 3C			Airport ID: KSPW	Airport: SPENCER MUNI		Reimbursable #: NO
City: SPENCER	ST: IA	GPS #:	Estimated Chart Date: 02/28/2019		FICO #:	
Fac ID: SPW		Fac. Type: VOR_DME			Specialist: THERON CYRUS	
Procedure Review						
	Rec'd	Rel'd	Full Name	Comments		
Lead:	09/07/2018	11/28/2018	WARDELL HENNING	Digitally signed by QUALITY		
QA:	11/28/2018	11/29/2018	KISSY MAXFIELD	WARDELL HENNING 41		
Liaison:				Jan 22, 2019 CHECKED		
Procedure Comments: ENROUTE Remark Type: INFORMATION FLIGHT INSPECTION REVIEW NOT REQUIRED - PROCESSED IAW AIRCRAFT OPERATIONS GROUP (AJW-33) MEMO, OCTOBER 3, 2018. PROCEDURE AMENDMENT IN SUPPORT OF VOR MON. CONTACT: WARDELL HENNING: 405.954.9954. 01/16/2019: THIS IS A CORRECTED COPY OF THE FORM APPROVED ON: 11/29/2018: 1. CHANGED FAF ON 8260-5 FROM SPW VOR/DME TO ZUNMU/SPW 5.30 DME.						

VOR/DME SPW	APP CRS	Rwy Idg	5501
110.0	292°	TDZE	1338
Chan 37		Apt Elev	1339

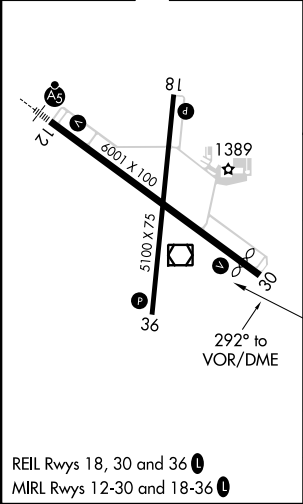
VOR RWY 30
SPENCER MUNI (SPW)

DME required.	MISSED APPROACH: Climb to 3000, then left turn direct SPW VOR/DME, then on SPW VOR/DME R-112 to ZUNMU/SPW 5.3 DME and hold.
VDP NA when using Estherville altimeter setting. When local altimeter setting not received, use Estherville altimeter setting and increase all MDA 60 feet and increase S-30 Cat C/D visibility ½ SM and Circling Cat C/D visibility ¼ SM.	

ASOS 126.625	MINNEAPOLIS CENTER 127.75 257.7	UNICOM 123.0 (CTAF) 0
-----------------	------------------------------------	--------------------------



ELEV 1339	TDZE 1338
-----------	-----------



REIL Rwy 18, 30 and 36 0
MIRL Rwy 12-30 and 18-36 0

PROTOTYPE-NOT FOR NAVIGATION

3000	SPW	SPW R-112	ZUNMU SPW 5.3	ZUNMU SPW 5.3	Remain within 10 NM
SPW VOR/DME	SPW 2.4	≤ 3.01° TCH 40	292° (297°T)	3000	292° (297°T)
VGSI and descent angles not coincident (VGSI Angle 3.00/TCH 34).					
2.2 NM 2.9 NM					
CATEGORY	A	B	C	D	
S-30	2080-1 742 (800-1)	2080-1¼ 742 (800-1¼)	2080-2	742 (800-2)	
CIRCLING	2080-1 741 (800-1)	2080-1¼ 741 (800-1¼)	2100-2¼ 761 (800-2¼)	2100-2½ 761 (800-2½)	