
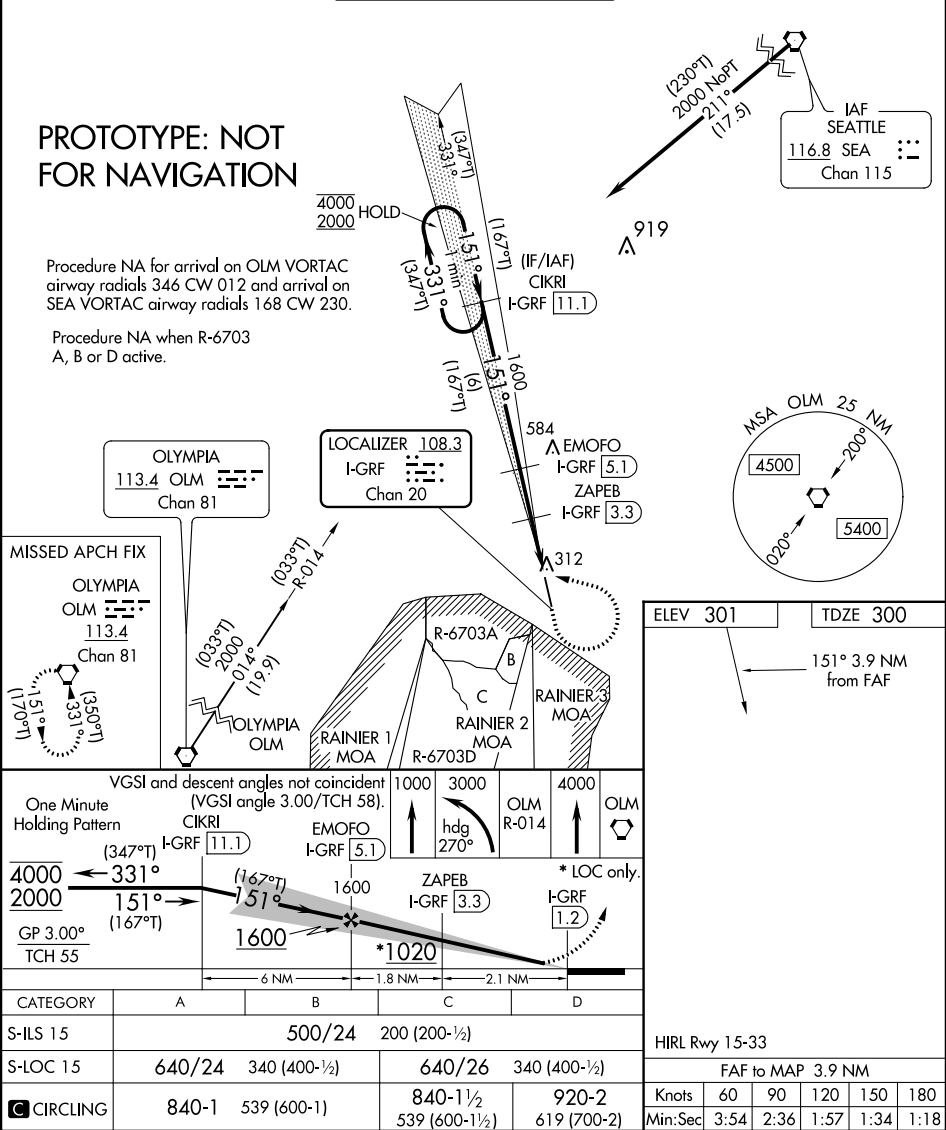


Flight Procedure Tracking Form		Action: AMENDMENT	Task Type: IAP	Date Open: 10/02/2018	Task #: 2018082729658002001	Request #: 20180827296580
Procedure: ILS OR LOC RWY 15 AMDT 8			Airport ID: KGRF	Airport: GRAY AAF (JOINT BASE LEWIS-MCCHORD)		Reimbursable #: NO
City: FORT LEWIS/TACOMA	ST: WA	GPS #:	Estimated Chart Date: 06/20/2019			FICO #: 1224520
Fac ID: GRF		Fac. Type: ILS			Specialist: RAKE MCGRAW	
Procedure Review						
	Rec'd	Rel'd	Full Name	Comments		
Lead:	08/27/2018	02/15/2019	TRACEY STILES			
QA:	02/15/2019	02/15/2019	TRACEY STILES			
Liaison:	02/15/2019	02/19/2019	MARY MCDONALD			
Procedure Comments:			ENROUTE Remark Type: INFORMATION			
<p>CONTACT: GEORGE DAVIS (MANAGER) 405 954 9960.</p> <p>04/25/2019: THIS IS AN UPDATED COPY OF THE FORM DEVELOPED ON 11/27/2018.</p> <p>1. ADDED EQUIPMENT REQUIREMENT NOTE: RNAV 1-GPS OR RADAR REQUIRED FOR PROCEDURE ENTRY AT SEA VORTAC.</p>						

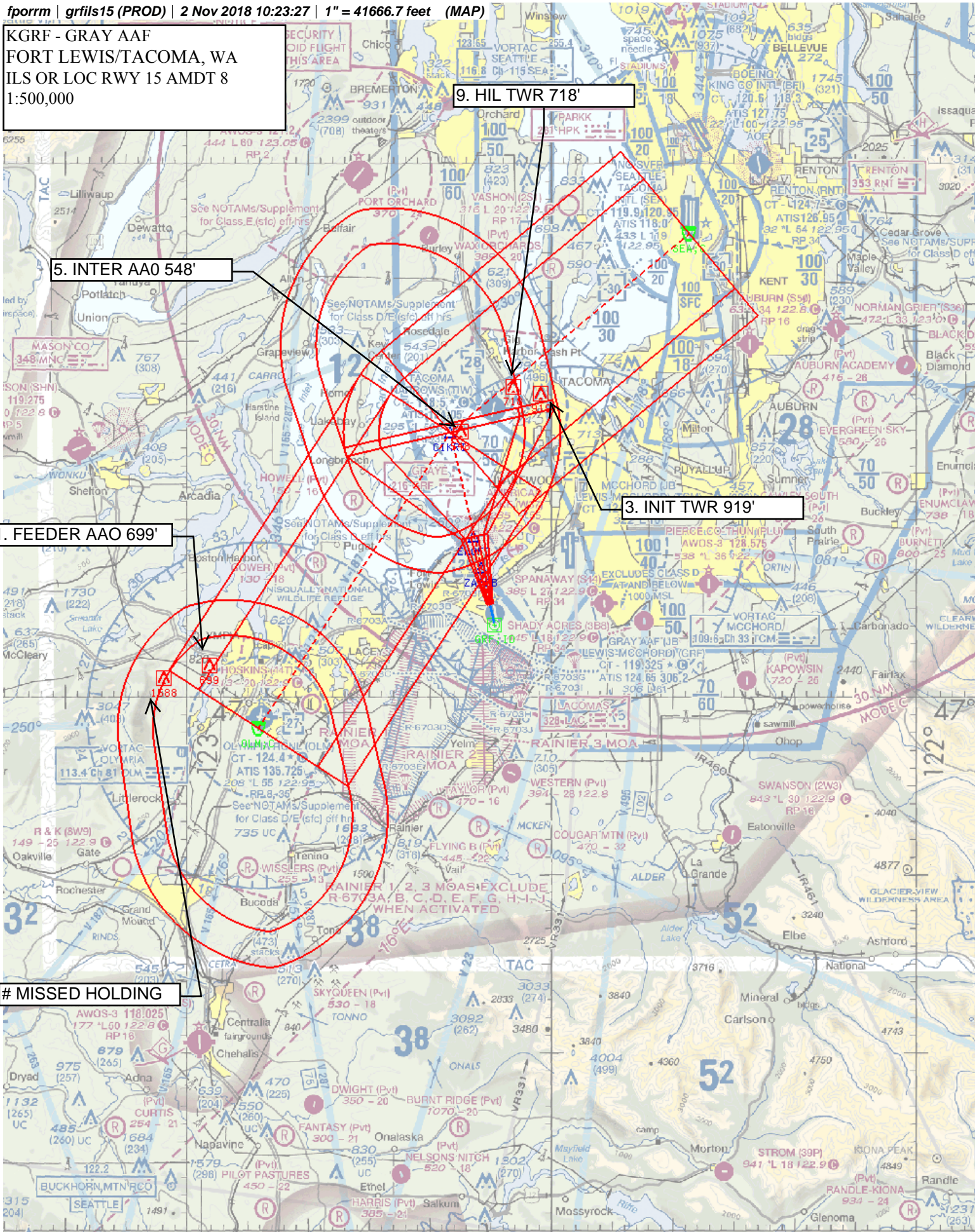
DME required for procedure entry. DME required				SSALR 	MISSED APPROACH: Climb to 1000 then climbing left turn to 3000 on heading 270° and OLM VORTAC R-014 then continue climb to 4000 on OLM VORTAC R-014 to OLM VORTAC and hold.				
<div>▼ For inop ALS when using McChord AFB altimeter setting, increase LOC Cat C/D visibility to RVR 5500. When local altimeter setting not received, use McChord AFB altimeter setting and increase DA to 516; increase all MDA 20 feet and visibility Cats C and D to RVR 3500.</div>									
ATIS		SEATTLE APP CON		GRAY TOWER ★		GND CON		CLNC DEL	
124.65 306.2		120.1 290.9		119.325 (CTAF) 256.8		121.9 290.2		121.9 290.2	



NM 7 14 21 28 35 42 49
FT 42000 84000 126000 168000 210000 252000 294000

fporm | grfils15 (PROD) | 2 Nov 2018 10:23:27 | 1" = 41666.7 feet (MAP)

KGRF - GRAY AAF
FORT LEWIS/TACOMA, WA
ILS OR LOC RWY 15 AMDT 8
1:500,000

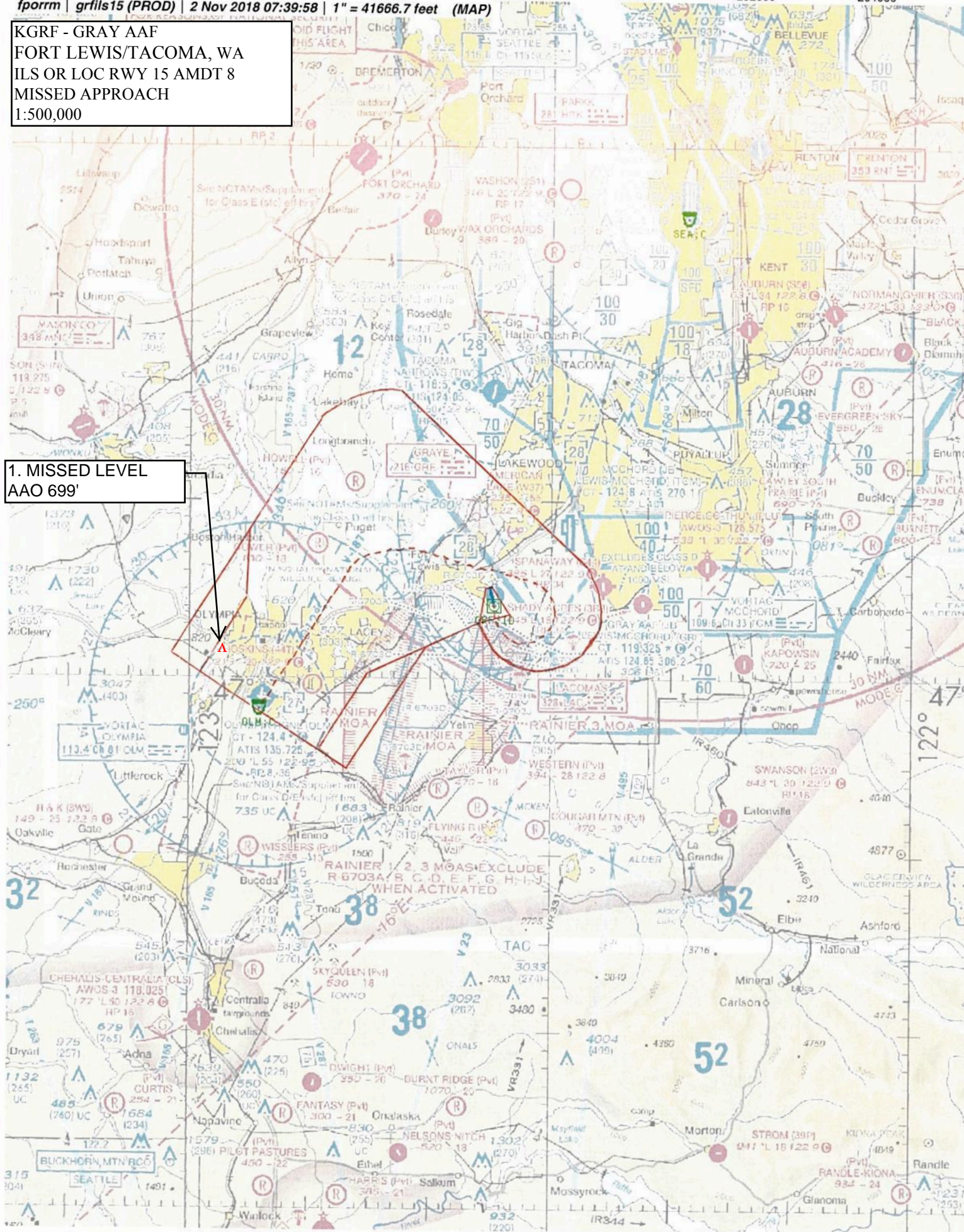


NM 7 14 21 28 35 42 49
FT 42000 84000 126000 168000 210000 252000 294000

fporm | grfils15 (PROD) | 2 Nov 2018 07:39:58 | 1" = 41666.7 feet (MAP)

KGRF - GRAY AAF
FORT LEWIS/TACOMA, WA
ILS OR LOC RWY 15 AMDT 8
MISSED APPROACH
1:500,000

1. MISSED LEVEL
AAO 699'

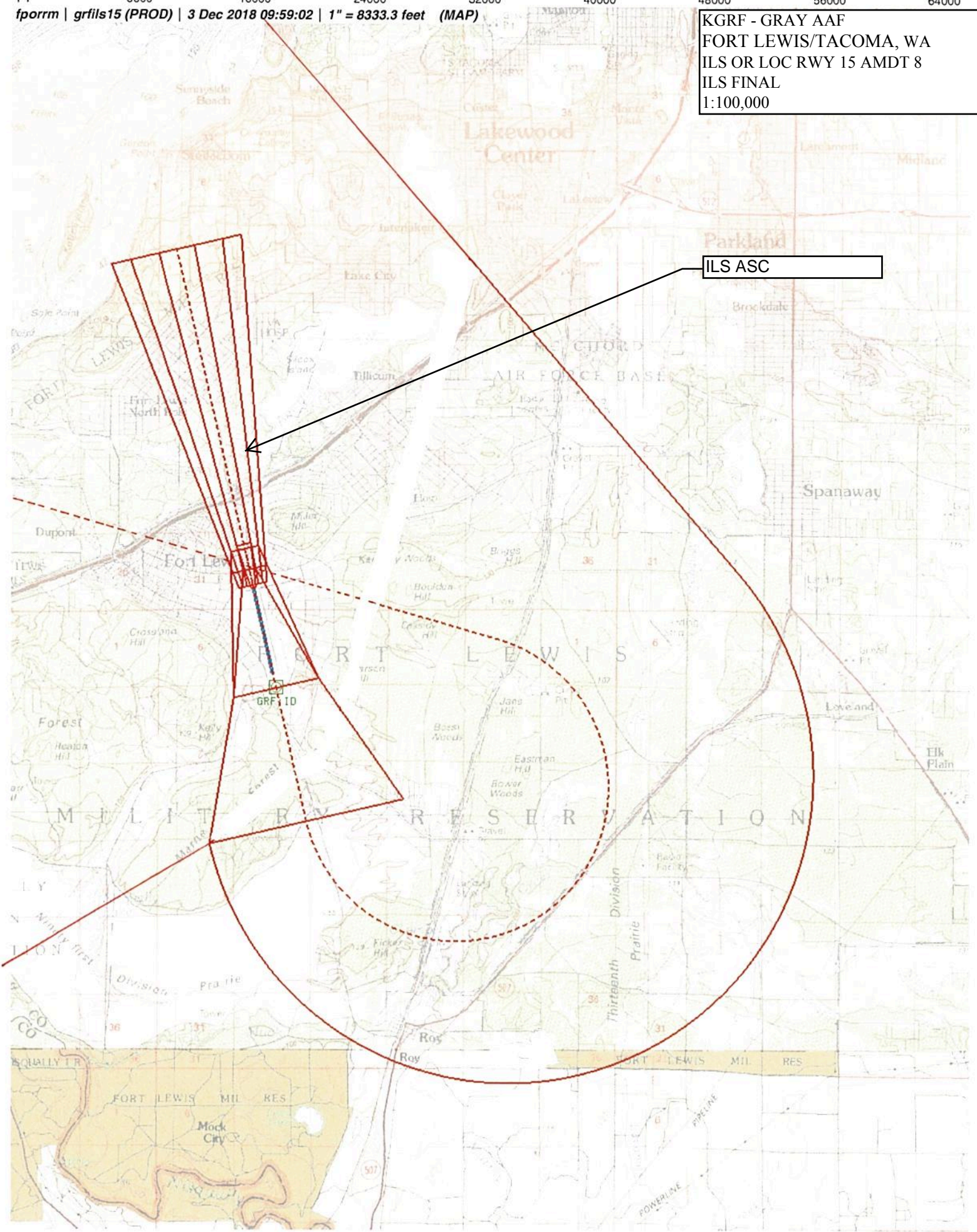


NM 1 2 3 4 5 6 7 8 9 10
FT 8000 16000 24000 32000 40000 48000 56000 64000

fporm | grfls15 (PROD) | 3 Dec 2018 09:59:02 | 1" = 8333.3 feet (MAP)

KGRF - GRAY AAF
FORT LEWIS/TACOMA, WA
ILS OR LOC RWY 15 AMDT 8
ILS FINAL
1:100,000

ILS ASC



fporrm | *grfils15 (PROD)* | 2 Nov 2018 10:04:04 | 1" = 8333.3 feet (MAP)

KGRF - GRAY AAF
FORT LEWIS/TACOMA, WA
ILS OR LOC RWY 15 AMDT 8
LOC FINAL
1:100,000

11. CIRCLING CAT A-C
TREE 539'

7. LOC FINAL/CIRC
CAT D AAO 620'

8. LOC FINAL
STEPDOWN POLE
312'