

<b>Flight Procedure Tracking Form</b>		<b>Action:</b> AMENDMENT	<b>Task Type:</b> IAP	<b>Date Open:</b> 08/09/2018	<b>Task #:</b> 2018080934888301006	<b>Request #:</b> 20180809348883
<b>Procedure:</b> RNAV (GPS)-A AMDT 0A			<b>Airport ID:</b> KAGS	<b>Airport:</b> AUGUSTA RGNL AT BUSH FIELD		<b>Reimbursable #:</b> NO
<b>City:</b> AUGUSTA	<b>ST:</b> GA	<b>GPS #:</b>	<b>Estimated Chart Date:</b> 06/20/2019		<b>FICO #:</b>	
<b>Fac ID:</b> N/A		<b>Fac. Type:</b>			<b>Specialist:</b> DEXTER SWEETING	
<b>Procedure Review</b>						
	<b>Rec'd</b>	<b>Rel'd</b>	<b>Full Name</b>	<b>Comments</b>		
<b>Lead:</b>	12/03/2018	02/15/2019	DONALD LANIER			
<b>QA:</b>	02/15/2019					
<b>Liaison:</b>						
<b>Procedure Comments:</b> ENROUTE-NON <b>Remark Type:</b> INFORMATION  REMOVED CHART NOTE: ASR - NO LONGER REQUIRED AIRPORT DOESN'T HAVE PUBLISH RADAR PROCEDURE..  PROCESSED IAW AIRCRAFT OPERATIONS GROUP (AJW-33) MEMO, OCTOBER 3, 2018, SUBJECT: FLIGHT INSPECTION REVIEW NOT REQUIRED  CONTACT: DONALD LANIER 405-954-8242						



# OLD

AUGUSTA, GEORGIA

AL-27 (FAA)

12320

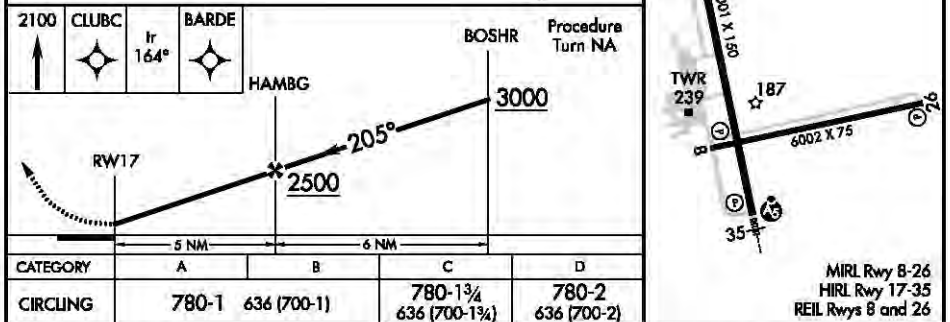
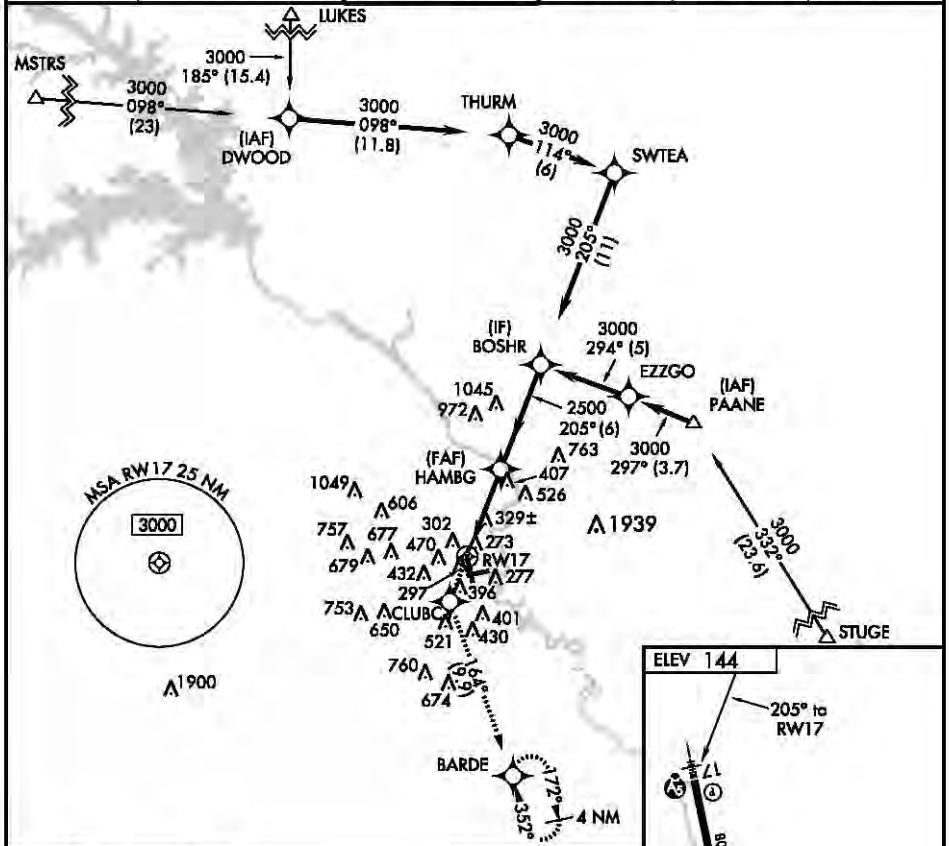
APP CRS <b>205°</b>	Rwy Idg TDZE Apt Elev	<b>N/A</b> <b>N/A</b> <b>144</b>
------------------------	-----------------------------	--

**RNAV (GPS)-A**

**AUGUSTA RGNL AT BUSH FIELD (AGS)**

<p><b>ASR</b></p> <p>Circling to Rwy 8 NA at night. When VGSI inoperative, Circling Rwy 26 NA at night. DME/DME RNP-0.3 NA.</p>	<p><b>MISSED APPROACH:</b> Climb to 2100 direct CLUBC and on track 164° to BARDE and hold.</p>
---	--

ATIS <b>132.75</b>	AUGUSTA APP CON ★ <b>126.8 270.3</b>	AUGUSTA TOWER ★ <b>118.7 (CTAF) 0 239.3</b>	GND CON <b>121.9 348.6</b>	CLNC DEL <b>121.9</b>	UNICOM <b>122.95</b>
-----------------------	---	--	-------------------------------	--------------------------	-------------------------



AUGUSTA, GEORGIA  
Orig 18NOV10

33°22'N-81°58'W

**AUGUSTA RGNL AT BUSH FIELD (AGS)**  
**RNAV (GPS)-A**

MIRL Rwy B-26  
HIRL Rwy 17-35  
REIL Rwys B and 26

SE-4, 10 JAN 2013 to 07 FEB 2013

SE-4, 10 JAN 2013 to 07 FEB 2013



