

FIG

ILS or LOC RWY 18R
CHARLOTTE/DOUGLAS INTL (CLT)

ALSF-2

ALSI-Z

(IAI)
PLUDKY

MSA CLT 25 NM


3800

STULL INT
CLT 13

110.8 BZM
Chan 45

STULL
BZM 46.2

$$\begin{array}{ccc} & & \Lambda^{1950} \\ 1999 & \Lambda & \\ & & \Lambda_{2041} \end{array}$$

CHARLOTTE
5.0 CLT 
Chap 97

1200	4000
------	------

0	STULL
---	-------

← 183° 6.9 M
from FAF

● 224

[illegible]

HIRL all Rlys
REIL Rlys 18L and 23
TDZ/CL Rlys 18R, 36L, 36C and 36R

FAF to MAP 5 NM					
Knots	60	90	120	150	180
Min:Sec	5:00	3:20	2:30	2:00	1:40

CHARLOTTE/DOUGLAS INTL (CLT)
ILS or LOC RWY 18R

FIG

ILS RWY 18R (SA CAT I)
CHARLOTTE/DOUGLAS INTL (CLT)

MISSED APPROACH: Climb to 1200 then climbing right turn to 4000 on CLT VOR/DME R-250 to STULL INT/CLT 13 DME and hold, continue climb-in-hold to 4000.

T Simultaneous approach authorized.
A Requires specific OPSPEC, MSPEC or LOA approval and use of HUD to DH.

CPDLC

PROTOTYPE-NOT
FOR NAVIGATION

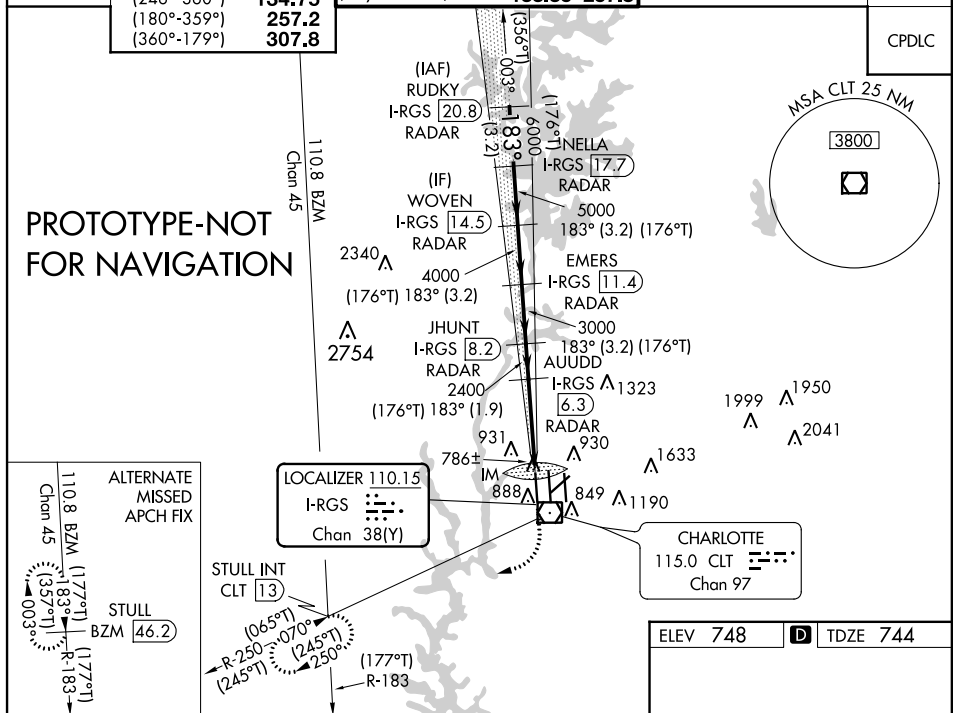


Diagram illustrating the S-ILS 18R approach procedure, showing the glidepath, altitudes, distances, and radar stations.

Altitudes and Distances:

- 7000 (176°T) 183°
- 6000
- 5000
- 4000
- 3000
- 2400
- 2400
- 5 NM
- 1078'

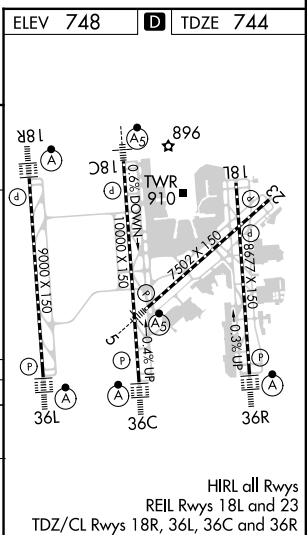
Radar Stations and Distances:

- RUDKY I-RGS [20.8] RADAR
- NELLA I-RGS [17.7] RADAR
- WOVEN I-RGS [14.5] RADAR
- EMERS I-RGS [11.4] RADAR
- JHUNT I-RGS [8.2] RADAR
- AUUDD I-RGS [6.3] RADAR
- 3.2 NM
- 3.2 NM
- 3.2 NM
- 3.2 NM
- 1.9 NM

Other Information:

- VGSI and ILS glidepath not coincident (VGSI Angle 2.80/TCH 65).
- CLT R-250
- STULL INT
- GS 3.00° TCH 55
- CATEGORY A
- RA 228/14 150 DA 894

SA CATEGORY I ILS SPECIAL AIRCREW
& AIRCRAFT CERTIFICATION REQUIRED



ILS RWY 18R (SA CAT I)

FIG

ILS RWY 18R (CAT II & III)
CHARLOTTE/DOUGLAS INTL (CLT)

MISSED APPROACH: Climb to 1200 then climbing right turn to 4000 on CLT VOR/DME R-250 to STULL INT/CLT 13 DME and hold, continue climb-in-hold to 4000.

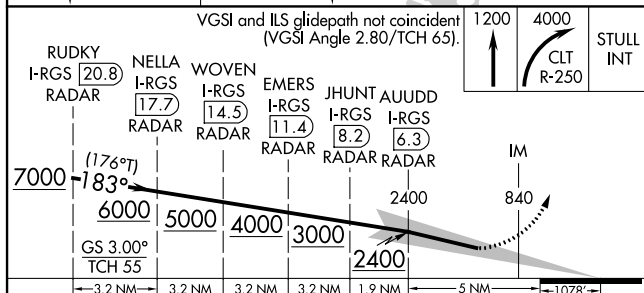
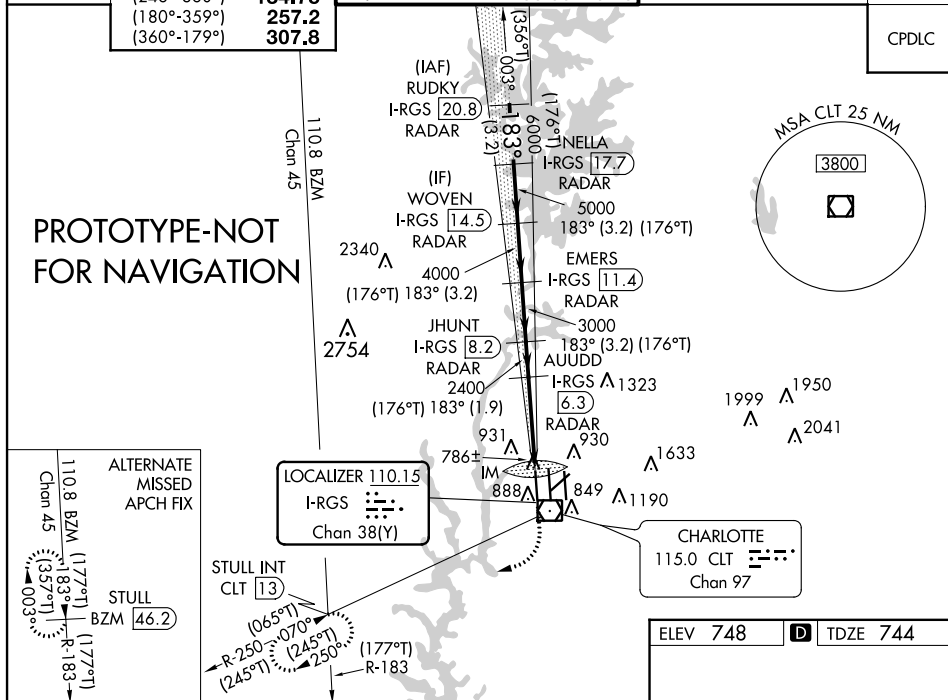


Simultaneous approach authorized.



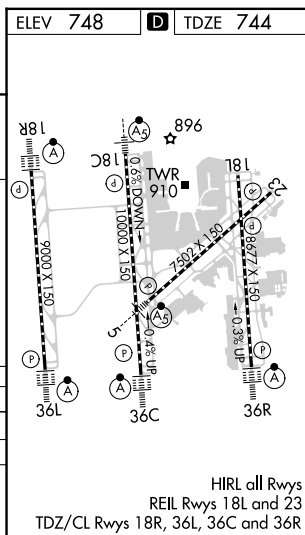
(180°-359°) (360°-179°)	257.2 307.8	(IAE) 356° 0	CPDLC
----------------------------	------------------------------	-----------------	-------

PROTOTYPE-NOT
FOR NAVIGATION



CATEGORY	A	B	C	D
S-ILS 18R	CAT II RA 106/12 100 DA 844			
S-ILS 18R	CAT III RVR 06			

CATEGORY II & III ILS SPECIAL AIRCREW
& AIRCRAFT CERTIFICATION REQUIRED



CHARLOTTE/DOUGLAS INTL (CLT)

IIS RWY 18R (CAT II & III)

INFORMATION ONLY

CHARLOTTE, NORTH CAROLINA

AL-78 (FAA)

15120

LOC/DME I-RGS 110.15 Chan 38 (Y)	APP CRS 183°	Rwy Idg TDZE Apt Elev 9000 744 748
--	------------------------	--

ILS or LOC RWY 18R
CHARLOTTE/DOUGLAS INTL (CLT)

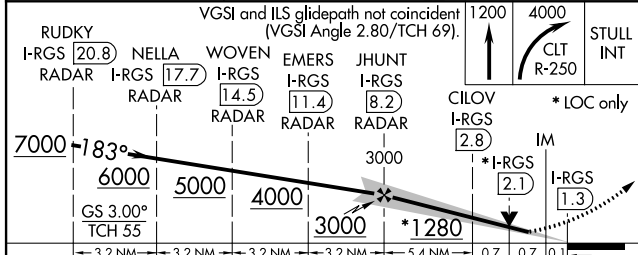
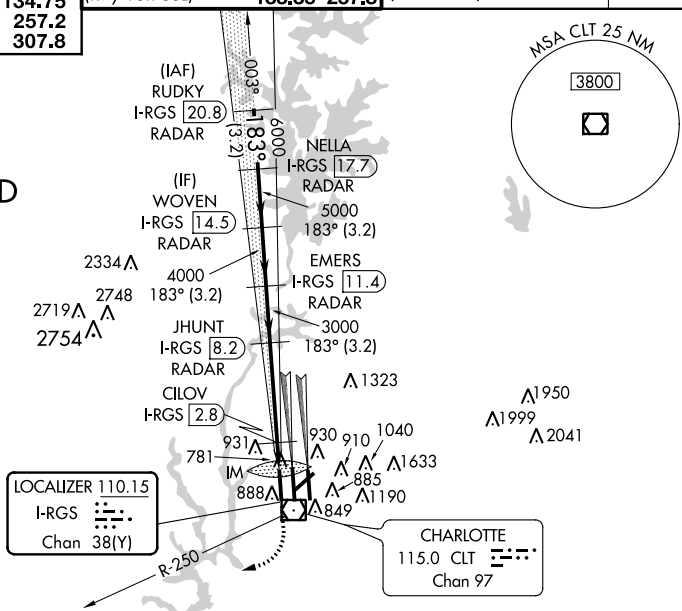
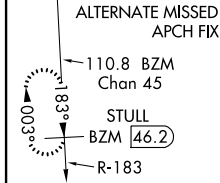
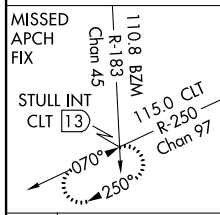
⚠ Circling NA at night. Simultaneous approach authorized with Rwy 18C/L. DME or RADAR required.

ALSF-2
(A)

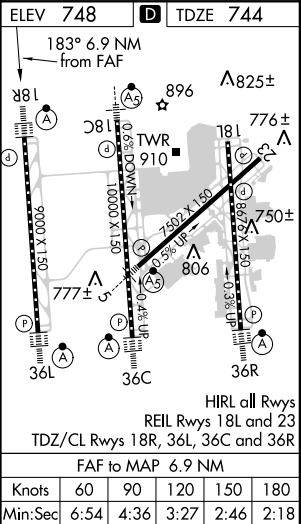
MISSED APPROACH: Climb to 1200 then climbing right turn to 4000 on CLT VOR/DME R-250 to STULL INT/CLT 13 DME and hold, continue climb-in-hold to 4000.

ATIS	CHARLOTTE APP CON	CHARLOTTE TOWER	GND CON	CLNC DEL
ARR 121.15	(001°-119°) 128.32	(Rwys 18L-36R, 5-23) 118.1 257.8	(180°-359°) 121.8 348.6	127.15
DEP 132.1	(120°-245°) 120.05	(Rwy 18C-36C) 126.4 257.8	(360°-179°) 121.9 348.6	348.6
	(246°-360°) 134.75	(Rwy 18R-36L) 133.35 257.8		
	(180°-359°) 257.2			
	(360°-179°) 307.8			

RADAR REQUIRED



CATEGORY	A	B	C	D
S-ILS 18R	944/18 200 (200-½)			
S-LOC 18R	1280/24 536 (600-½)		1280/55 536 (600-¼)	
C CIRCLING	1280-1 532 (600-1)		1500-2¼ 752 (800-2¼)	1500-2½ 752 (800-2½)
CILOV FIX MINIMUMS (DME REQUIRED)				
S-LOC 18R	1040/24 296 (300-½)			
C CIRCLING	1240-1 492 (500-1)		1500-2¼ 752 (800-2¼)	1500-2½ 752 (800-2½)



CHARLOTTE, NORTH CAROLINA

Amtd 1 30APR15

35°13'N-80°57'W

CHARLOTTE/DOUGLAS INTL (CLT)
ILS or LOC RWY 18R

SE-2, 30 APR 2015 to 28 MAY 2015

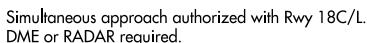
15120

CHARLOTTE, NORTH CAROLINA
Amdt 1 30APR15
35°13'N-80°57'W

SE-2. 30 APR 2015 to 28 MAY 2015

15120

ILS RVVY 18R (CAT II & III)
CHARLOTTE/DOUGLAS INTL (CLT)



MISSED APPROACH: Climb to 1200 then climbing right turn to 4000 on CLT VOR/DME R-250 to STULL INT/CLT 13 DME and hold, continue climb-in-hold to 4000.

ATIS		CHARLOTTE APP CON		CHARLOTTE TOWER		GND CON		CLNC DEL		
ARR	121.15	(001°-119°)	128.32	(Rwys 18L-36R, 5-23)	118.1	257.8	(180°-359°)	121.8	348.6	127.15
DEP	132.1	(120°-245°)	120.05	(Rwy 18C-36C)	126.4	257.8	(360°-179°)	121.9	348.6	348.6
		(246°-360°)	134.75	(Rwy 18R-36L)	133.35	257.8				
		(180°-359°)	257.2							
		(360°-179°)	307.8							

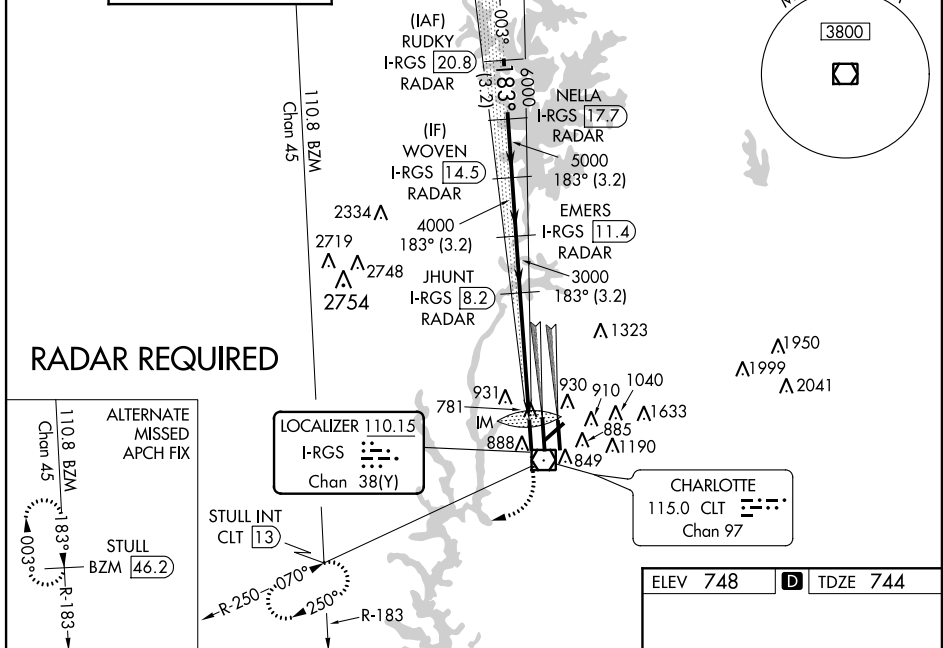
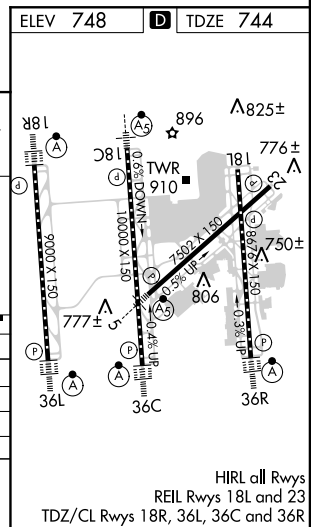
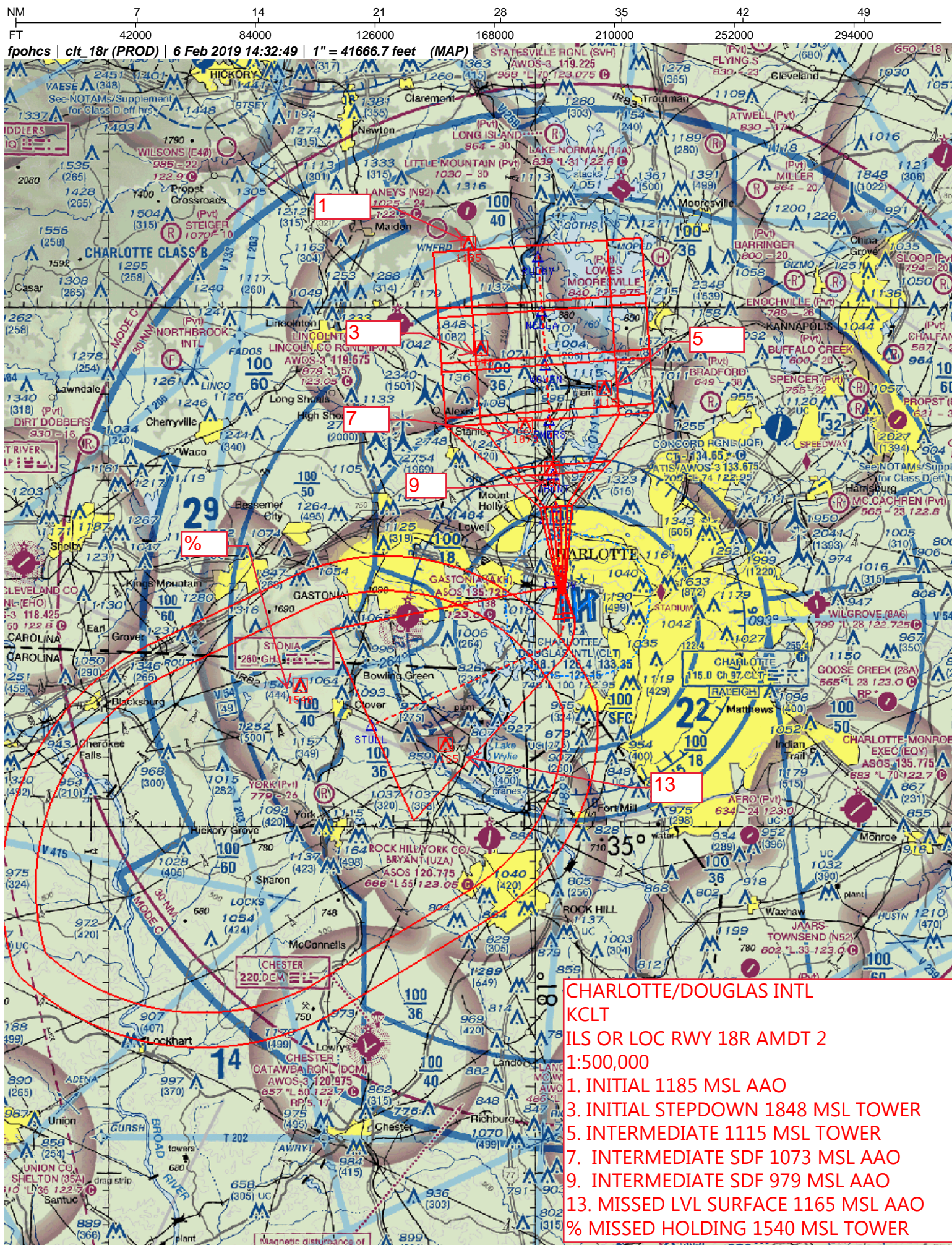


Figure 1 is a 2D radar display showing a heading of 183° and a ground speed (GS) of 3.00 knots. The display includes several radar returns labeled with station names and ranges: RUDKY (20.8), NELLA (17.7), WOVEN (14.5), EMERS (11.4), and JHUNT (8.2). A VGS (Vertical Glide Slope) line is shown at 2.80 degrees/TCH 69 degrees. The plot also shows a 3D radar return labeled 'IM' at 840 feet. The plot is divided into four quadrants labeled A, B, C, and D. The plot is also labeled with 'R-250' and 'STULL INT'.

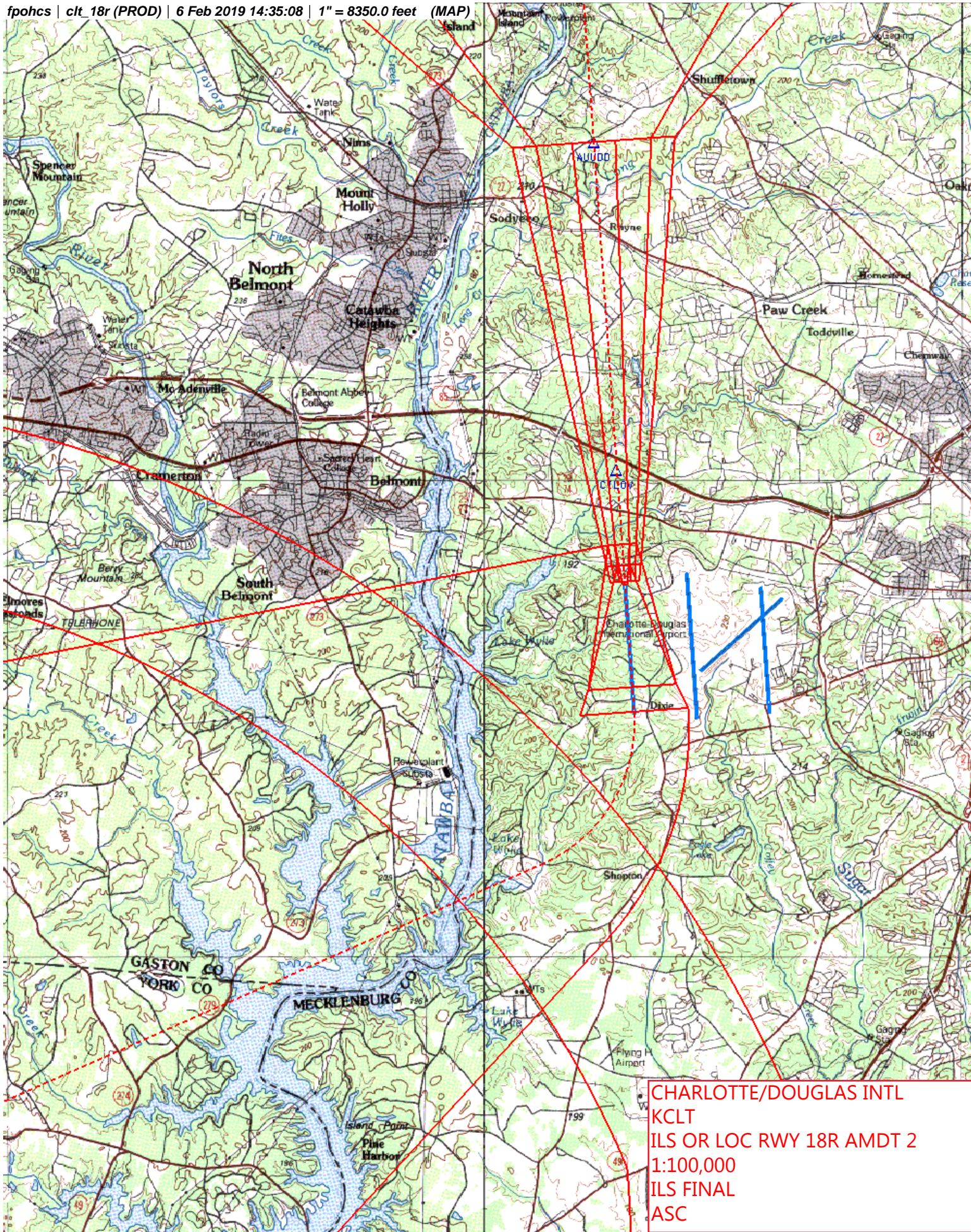
CATEGORY II & III ILS SPECIAL AIRCREW & AIRCRAFT CERTIFICATION REQUIRED





NM 1 2 3 4 5 6 7 8 9 10
FT 8000 16000 24000 32000 40000 48000 56000 64000

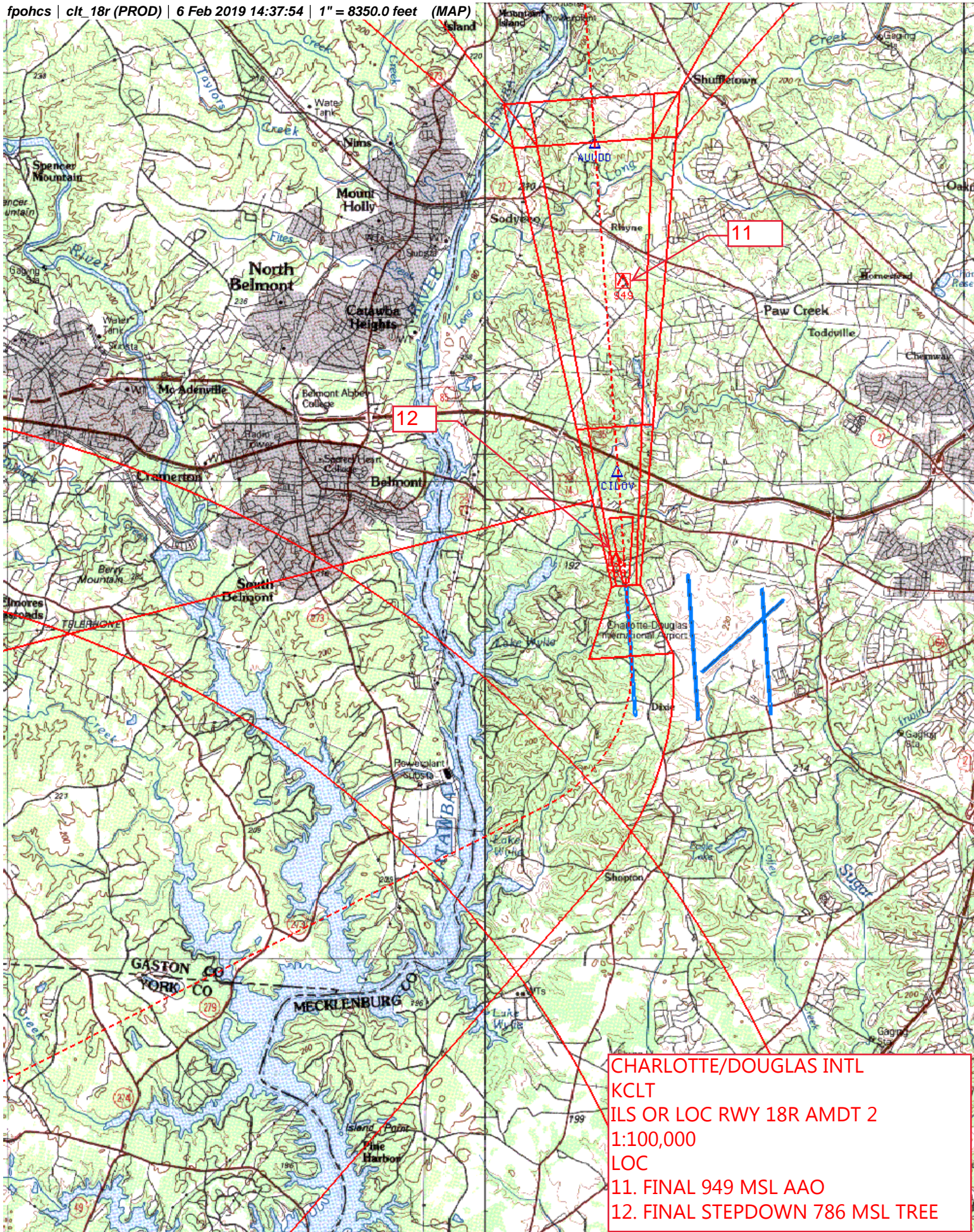
fpohcs | clt_18r (PROD) | 6 Feb 2019 14:35:08 | 1" = 8350.0 feet (MAP)



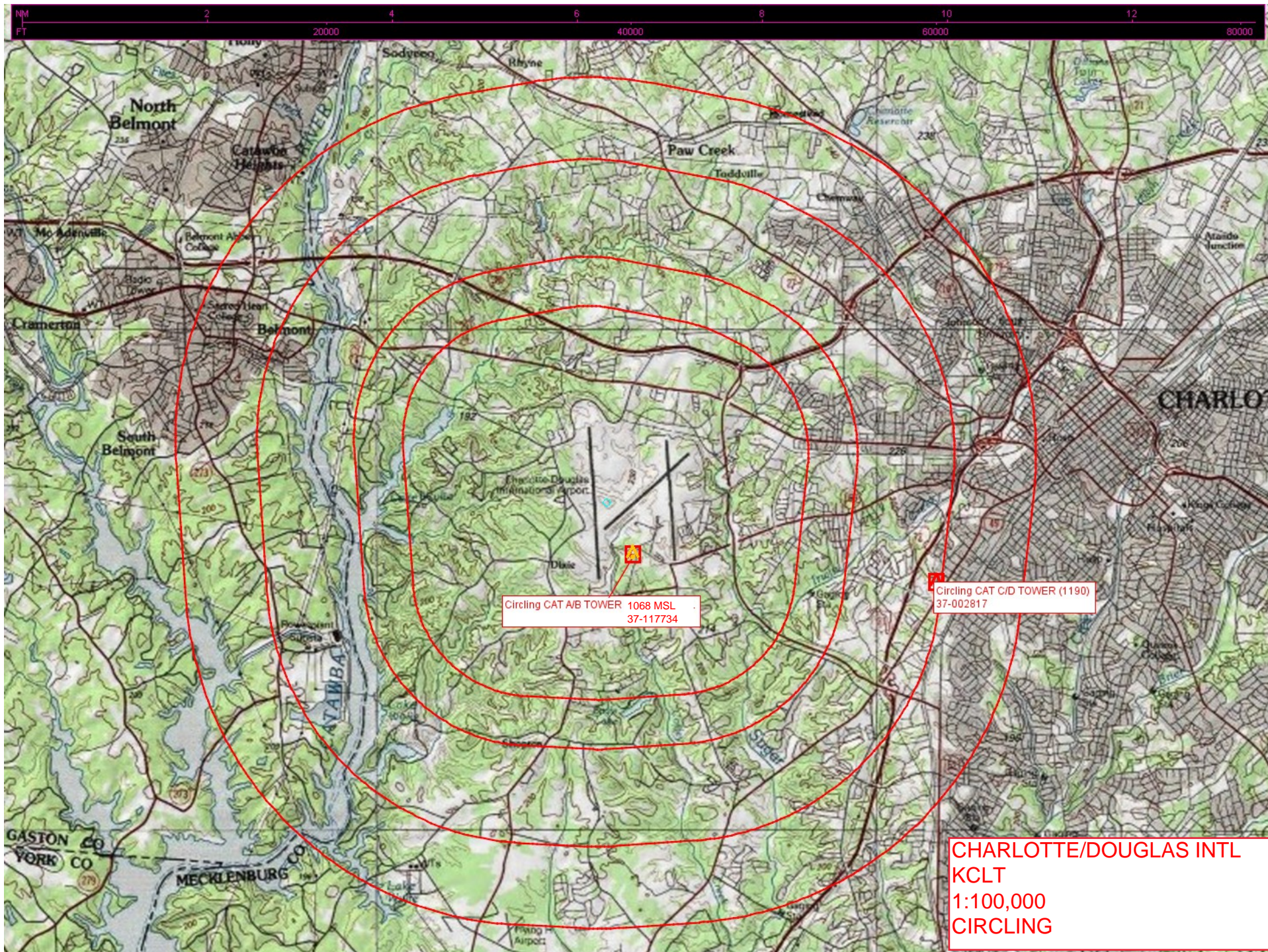
CHARLOTTE/DOUGLAS INTL
KCLT
ILS OR LOC RWY 18R AMDT 2
1:100,000
ILS FINAL
ASC

NM 1 2 3 4 5 6 7 8 9 10
FT 8000 16000 24000 32000 40000 48000 56000 64000

fpohcs | clt_18r (PROD) | 6 Feb 2019 14:37:54 | 1" = 8350.0 feet (MAP)



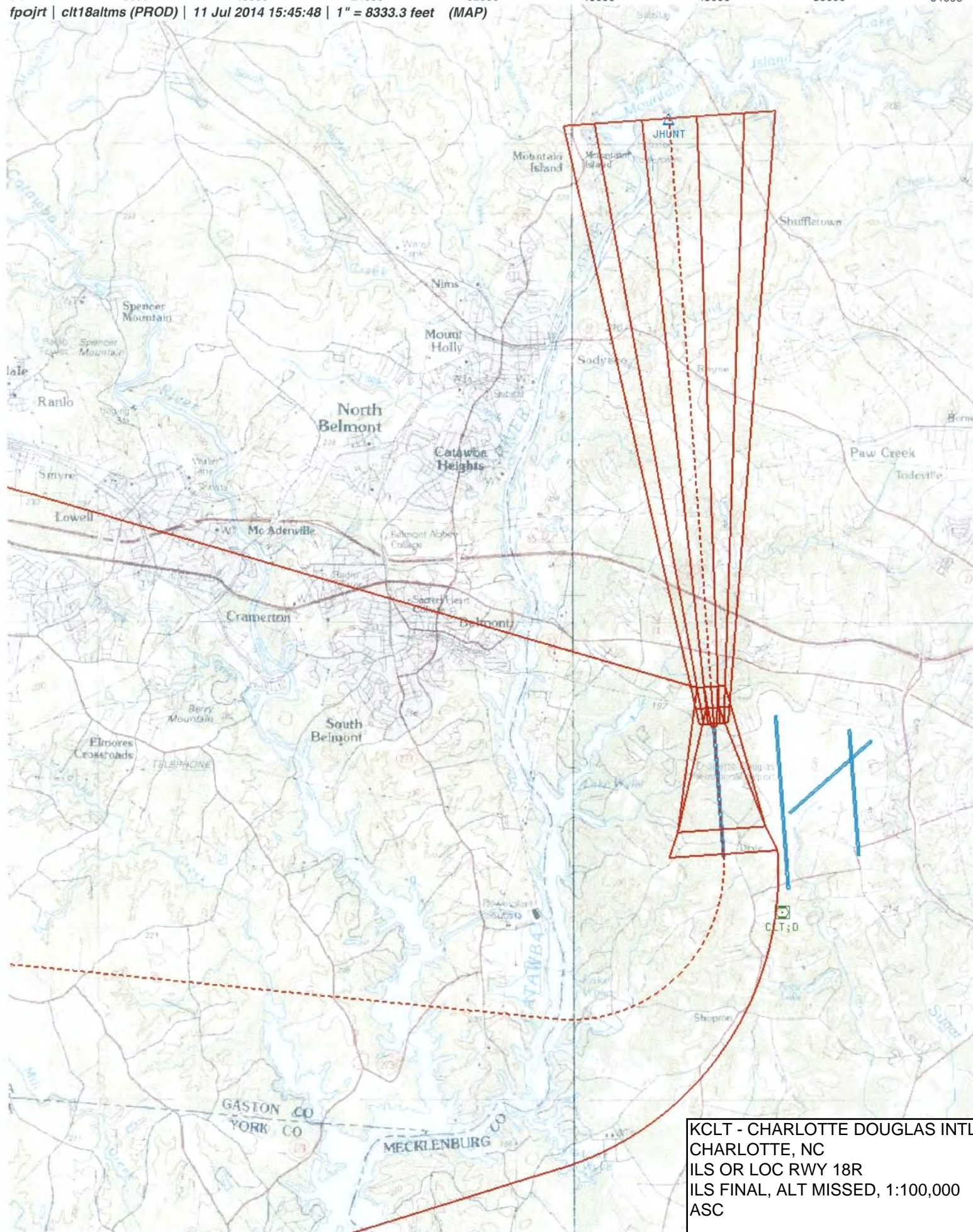
CHARLOTTE/DOUGLAS INTL
KCLT
ILS OR LOC RWY 18R AMDT 2
1:100,000
LOC
11. FINAL 949 MSL AAO
12. FINAL STEPDOWN 786 MSL TREE





NM 1 2 3 4 5 6 7 8 9 10
FT 8000 16000 24000 32000 40000 48000 56000 64000

fpojrt | clt18altms (PROD) | 11 Jul 2014 15:45:48 | 1" = 8333.3 feet (MAP)



KCLT - CHARLOTTE DOUGLAS INTL
CHARLOTTE, NC
ILS OR LOC RWY 18R
ILS FINAL, ALT MISSED, 1:100,000
ASC