

<b>Flight Procedure Tracking Form</b>		<b>Action:</b> FLIGHT CHECK	<b>Task Type:</b> IAP	<b>Date Open:</b> 07/25/2018	<b>Task #:</b> 2018072528427301001	<b>Request #:</b> 20180725284273
<b>Procedure:</b> RNAV (GPS) RWY 19 AMDT 1D			<b>Airport ID:</b> KM95	<b>Airport:</b> RICHARD ARTHUR FIELD		<b>Reimbursable #:</b> NO
<b>City:</b> FAYETTE	<b>ST:</b> AL	<b>GPS #:</b>	<b>Estimated Chart Date:</b> 08/15/2019		<b>FICO #:</b> 1225607	
<b>Fac ID:</b> N/A		<b>Fac. Type:</b>		<b>Specialist:</b> SHANE FOWLER		
<b>Procedure Review</b>						
	<b>Rec'd</b>	<b>Rel'd</b>	<b>Full Name</b>	<b>Comments</b>		
<b>Lead:</b>	08/23/2018	03/06/2019	ALLAN WILL	QUALITY		
<b>QA:</b>	03/06/2019	03/13/2019	ANDI LAU	4 5/16CTabaka		
<b>Liaison:</b>	03/13/2019	03/14/2019	MARY MCDONALD	CHECKED		
<b>Procedure Comments:</b>			<b>ENROUTE-NON</b>			
			<b>Remark Type:</b> INFORMATION			
<p>FLIGHT CHECK: REQUEST TABLE-TOP (FAS DATA CHANGED).</p> <p>ACTIVE AIRPORT DATA USED.</p> <p>THIS CANCELS T-NOTAM FDC 8/3417.</p> <p>05/16/19: THIS IS AN UPDATED COPY OF THE FORM DEVELOPED ON 01/16/19.</p> <p>1. REMOVED LP LINE OF MINIMA - NEW RUNWAY COORDINATES.</p> <p>2. REMOVED FAS DATA BLOCK INFORMATION - LP LINE OF MINIMA REMOVED.</p> <p>3. REMOVED WAAS CHANNEL NUMBER, REFERENCE PATH ID AND CHART FAS OBSTACLE FROM ADDITIONAL FLIGHT DATA - LP LINE OF MINIMA REMOVED.</p> <p>CONTACT: ALLAN WILL 405-954-6103 OR MARLON ROBINSON 405-954-3636.</p>						

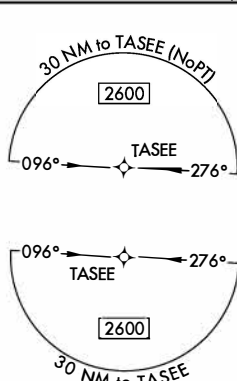
FIG

# RNAV (GPS) RWY 19

## RICHARD ARTHUR FIELD (M95)

**MISSED APPROACH:** Climb to 2600  
direct WOGVA and on track 102°  
to BESOM and hold.

UNICOM  
122.8 (CTAF) 



4 NM

HOLD

6000  
2600

0.06°

0.03°

186°

183°

(IF/IAF)  
TASEF

1167

PROTOTYPE-NOT  
FOR NAVIGATION

(183°)  
2200  
186°  
(6.8)

(FAF)  
LODLE

659±  
JARVA  
3.1 NM to  
RW19

505± RW19 690

507 ± 10

885A

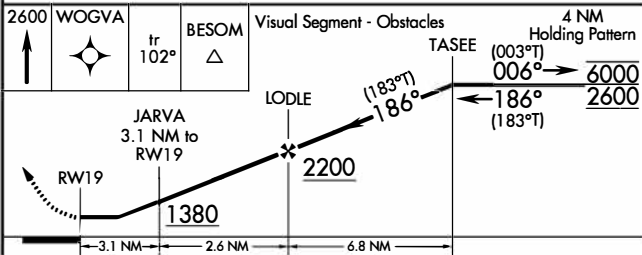
▲1003

929

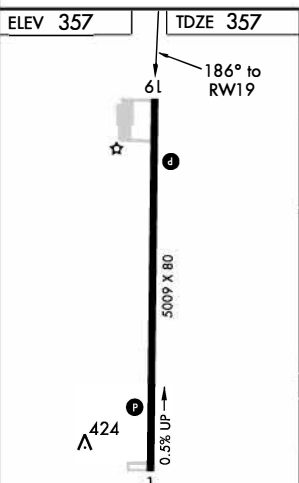
960

WOGVA

102  
(19.5)



CATEGORY	A	B	C	D
LP MDA	1000-1	643 (700-1)	1000-1 $\frac{7}{8}$	643 (700-1 $\frac{7}{8}$ )
INAV MDA	1080-1	723 (800-1)	1080-2	723 (800-2)
CIRCLING	1080-1	723 (800-1)	1080-2 723 (800-2)	1100-2 $\frac{1}{2}$ 743 (800-2 $\frac{1}{2}$ )



RICHARD ARTHUR FIELD (M95)  
RNAV (GPS) RWY 19





