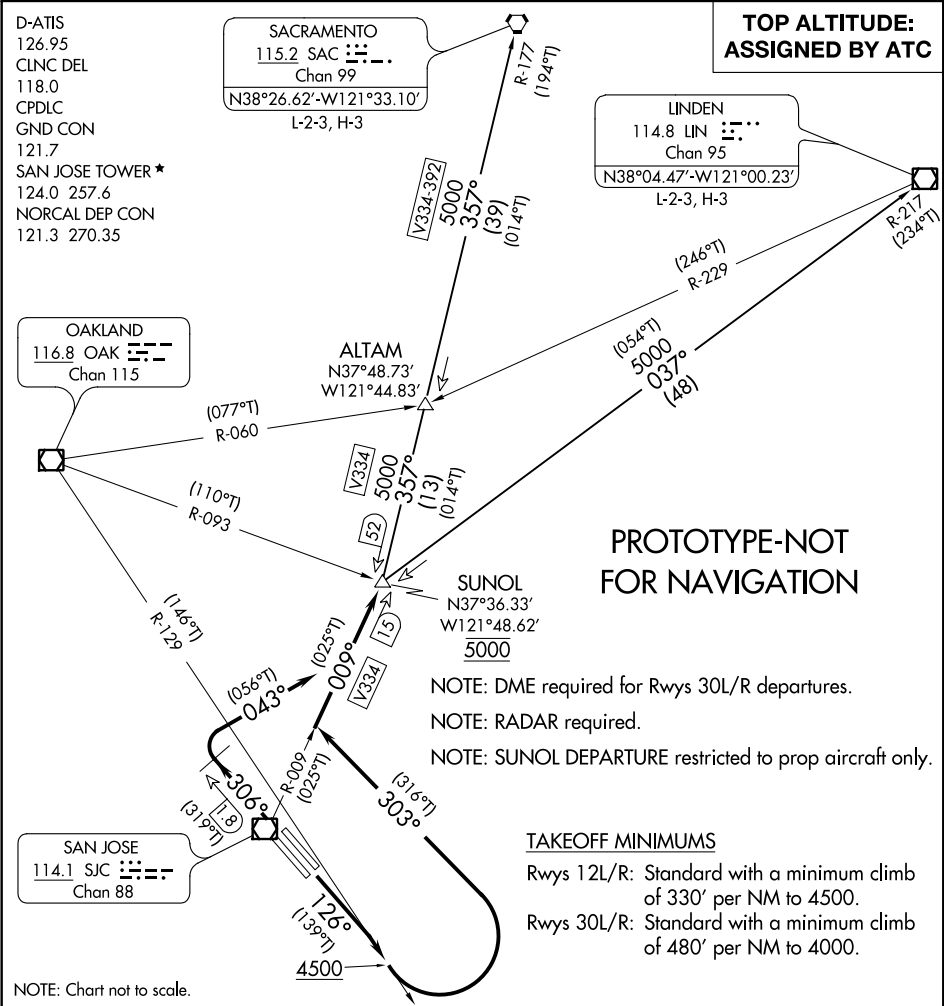


Flight Procedure Tracking Form		Action: FLIGHT CHECK	Task Type: SID	Date Open: 07/25/2018	Task #: 2018072528375501002	Request #: 20180725283755
Procedure: SID SUNOL ONE SAN JOSE CA KSJC			Airport ID: KSJC	Airport: NORMAN Y MINETA SAN JOSE INTL		Reimbursable #: NO
City: SAN JOSE	ST: CA	GPS #:	Estimated Chart Date: 06/20/2019		FICO #:	
Fac ID: N/A		Fac. Type:			Specialist: JACOB MAXFIELD	
Procedure Review						
	Rec'd	Rel'd	Full Name	Comments		
Lead:	07/27/2018	02/07/2019	DONALD LANIER	<div style="text-align: center;"> <div>QUALITY</div> <div>3</div> <div>CHECKED</div> </div>		
QA:	02/07/2019					
Liaison:						
Procedure Comments:			ENROUTE	Remark Type: INFORMATION		
THIS CANCELS TNOTAM 9/9582						
CONTACT: PAT MULQUEEN 405-954-4073 OR DON LANIER 405-954-8242						

(SUNOL1.SUNOL) FIG
SUNOL ONE DEPARTURE

NORMAN Y MINETA SAN JOSE INTL (SJC)
AL-693 (FAA) SAN JOSE, CALIFORNIA



DEPARTURE ROUTE DESCRIPTION
TAKEOFF RUNWAYS 12L/R: Climb heading 126° to intercept and proceed on OAK R-129 to 4500, then turn left heading 303° for RADAR vectors to intercept and proceed on SJC R-009 to cross SUNOL at 5000, thence . . .
TAKEOFF RUNWAYS 30L/R: Climb heading 306° at SJC 1.8 DME northwest of SJC VOR/DME, turn right heading 043° to intercept and proceed on SJC R-009 to cross SUNOL at 5000, thence . . .
. . . then on (transition) or (assigned route). Maintain ATC assigned altitude.
LINDEN TRANSITION (SUNOL1.LIN): From over SUNOL on LIN R-217 to LIN VOR/DME.
SACRAMENTO TRANSITION (SUNOL1.SAC): From over SUNOL on SAC R-177 to SAC VORTAC.

SUNOL ONE DEPARTURE
(SUNOL1.SUNOL) FIG

SAN JOSE, CALIFORNIA
NORMAN Y MINETA SAN JOSE INTL (SJC)

(SUNOL9.SUNOL) 17341
SUNOL NINE DEPARTURE

OLD

AL-693 (FAA)

NORMAN Y MINETA SAN JOSE INTL (SJC)
SAN JOSE, CALIFORNIA

D-ATIS
126.95
CLNC DEL
118.0
CPDLC
GND CON
121.7
SAN JOSE TOWER ★
124.0 257.6
NORCAL DEP CON
121.3 270.35

**TOP ALTITUDE:
ASSIGNED BY ATC**

SACRAMENTO
115.2 SAC
Chan 99
N38°26.62'-W121°33.10'
L-2-3, H-3

LINDEN
114.8 LIN
Chan 95
N38°04.47'-W121°00.23'
L-2-3, H-3

OAKLAND
116.8 OAK
Chan 115

ALTAM
N37°48.73'
W121°44.83'

SUNOL
N37°36.33'
W121°48.62'
5000

SAN JOSE
114.1 SJC
Chan 88

NOTE: DME required for Rwy 30L/R departures.

NOTE: RADAR required.

NOTE: SUNOL DEPARTURE restricted to prop aircraft only.

TAKEOFF MINIMUMS

Rwys 12L/R: Standard with a minimum climb
of 290' per NM to 4000.

Rwys 30L/R: Standard with a minimum climb
of 480' per NM to 4000.

NOTE: Chart not to scale.



DEPARTURE ROUTE DESCRIPTION

TAKEOFF RUNWAYS 12L/R: Climb heading 126° to intercept and proceed on OAK R-129 to 4000, then turn left heading 303° for RADAR vectors to intercept and proceed on SJC R-009 to SUNOL. . . .

TAKEOFF RUNWAYS 30L/R: Climb heading 306°. At SJC 1.8 DME northwest of SJC VOR/DME, turn right heading 043° to intercept and proceed on SJC R-009 to SUNOL. . . .

. . . .cross SUNOL at 5000, then on (transition) or (assigned route).

LINDEN TRANSITION (SUNOL9.LIN): From over SUNOL INT on LIN R-217 to LIN VOR/DME.

SACRAMENTO TRANSITION (SUNOL9.SAC): From over SUNOL INT on SAC R-177 to SAC VORTAC.

SUNOL NINE DEPARTURE
(SUNOL9.SUNOL) 22JUN17

SAN JOSE, CALIFORNIA
NORMAN Y MINETA SAN JOSE INTL (SJC)

SW-2, 03 JAN 2019 to 31 JAN 2019

SW-2, 03 JAN 2019 to 31 JAN 2019

