

<b>Flight Procedure Tracking Form</b>		<b>Action:</b> FLIGHT CHECK	<b>Task Type:</b> IAP	<b>Date Open:</b> 07/02/2018	<b>Task #:</b> 2018070229905001002	<b>Request #:</b> 20180702299050
<b>Procedure:</b> RNAV (GPS) RWY 35 AMDT 2			<b>Airport ID:</b> K2J5	<b>Airport:</b> MILLEN		<b>Reimbursable #:</b> NO
<b>City:</b> MILLEN	<b>ST:</b> GA	<b>GPS #:</b>	<b>Estimated Chart Date:</b> 06/20/2019		<b>FICO #:</b>	
<b>Fac ID:</b> N/A		<b>Fac. Type:</b>			<b>Specialist:</b> STEVEN WINNER	
<b>Procedure Review</b>						
	<b>Rec'd</b>	<b>Rel'd</b>	<b>Full Name</b>	<b>Comments</b>		
<b>Lead:</b>	07/03/2018			QUALITY Digitally signed by		
<b>QA:</b>				24 DAVID W SAUER		
<b>Liaison:</b>				CHECKED Mar 07, 2019		
<b>Procedure Comments:</b> ENROUTE-NON <b>Remark Type:</b> INFORMATION  ACTIVE DATA USED FOR AIRPORT.  ADDED LOCAL ALTIMETER TO PROCEDURE.  CONTACT ROBERT HAMILTON (405) 954-4608						

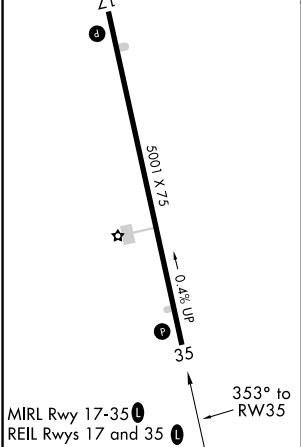
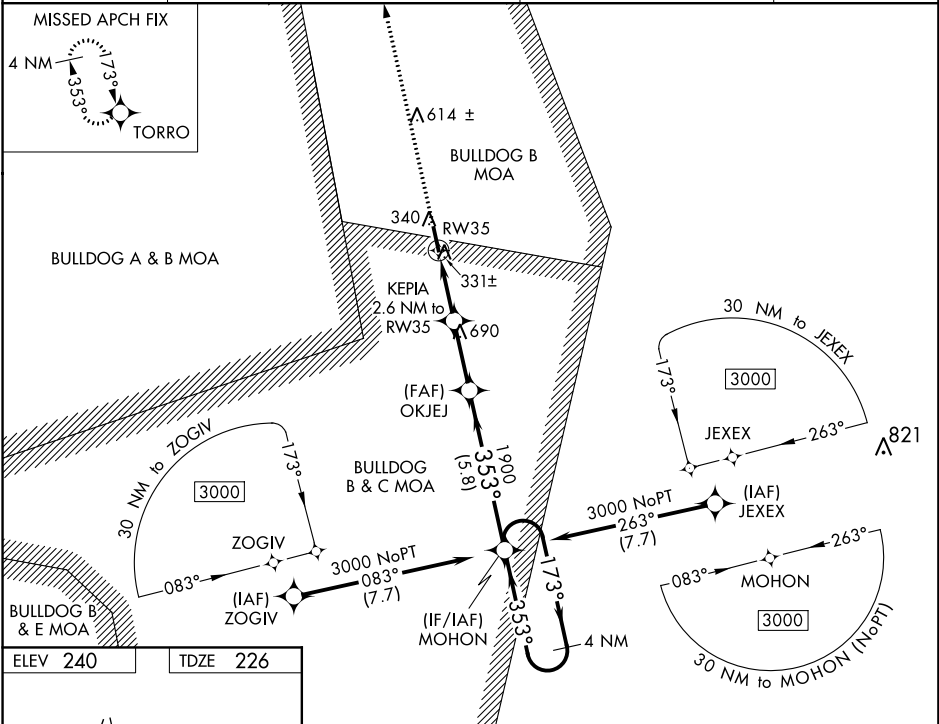
WAAS CH <b>53718</b> <b>W35A</b>	APP CRS <b>353°</b>	Rwy Idg TDZE <b>226</b> Apt Elev <b>240</b>
--	------------------------	---

OLD

RNAV (GPS) RWY 35  
MILLEN (2J5)

Baro-VNAV NA. Circling NA east of Rwy 17-35. DME/DME RNP-0.3 NA. Use Augusta Regional at Bush Field altimeter setting; when not received, use Sylvania altimeter setting. Helicopter visibility reduction below 1 SM NA. Procedure NA at night.	MISSED APPROACH: Climb to 3000 direct TORRO and hold.
---	--

AWOS-3PT <b>120.2</b>	AUGUSTA RGNL AT BUSH FIELD ASOS <b>132.75</b>	AUGUSTA APP CON <b>126.8 270.3</b>	CTAF <b>122.90</b>
--------------------------	--	---------------------------------------	-----------------------



3000

TORRO

↑

✦

\*LNAV only.

RW35

KEPIA  
2.6 NM to  
RW35

OKJEJ  
1900

MOHON

4 NM  
Holding Pattern

173°

353°

3000

GP 3.00°  
TCH 41

2.6 NM

2.5 NM

5.8 NM

\*1080

1900

CATEGORY	A		B		C		D	
LPV DA			556-1⅛		330 (400-1⅛)			
LNAV/ VNAV DA			577-1¼		351 (400-1¼)			
LNAV MDA	680-1		454 (500-1)		680-1⅜		454 (500-1⅜)	
CIRCLING	760-1		780-1		780-1½		1120-2¾	
	520 (600-1)		540 (600-1)		540 (600-1½)		880 (900-2¾)	

SE-4, 06 DEC 2018 to 03 JAN 2019

SE-4, 06 DEC 2018 to 03 JAN 2019

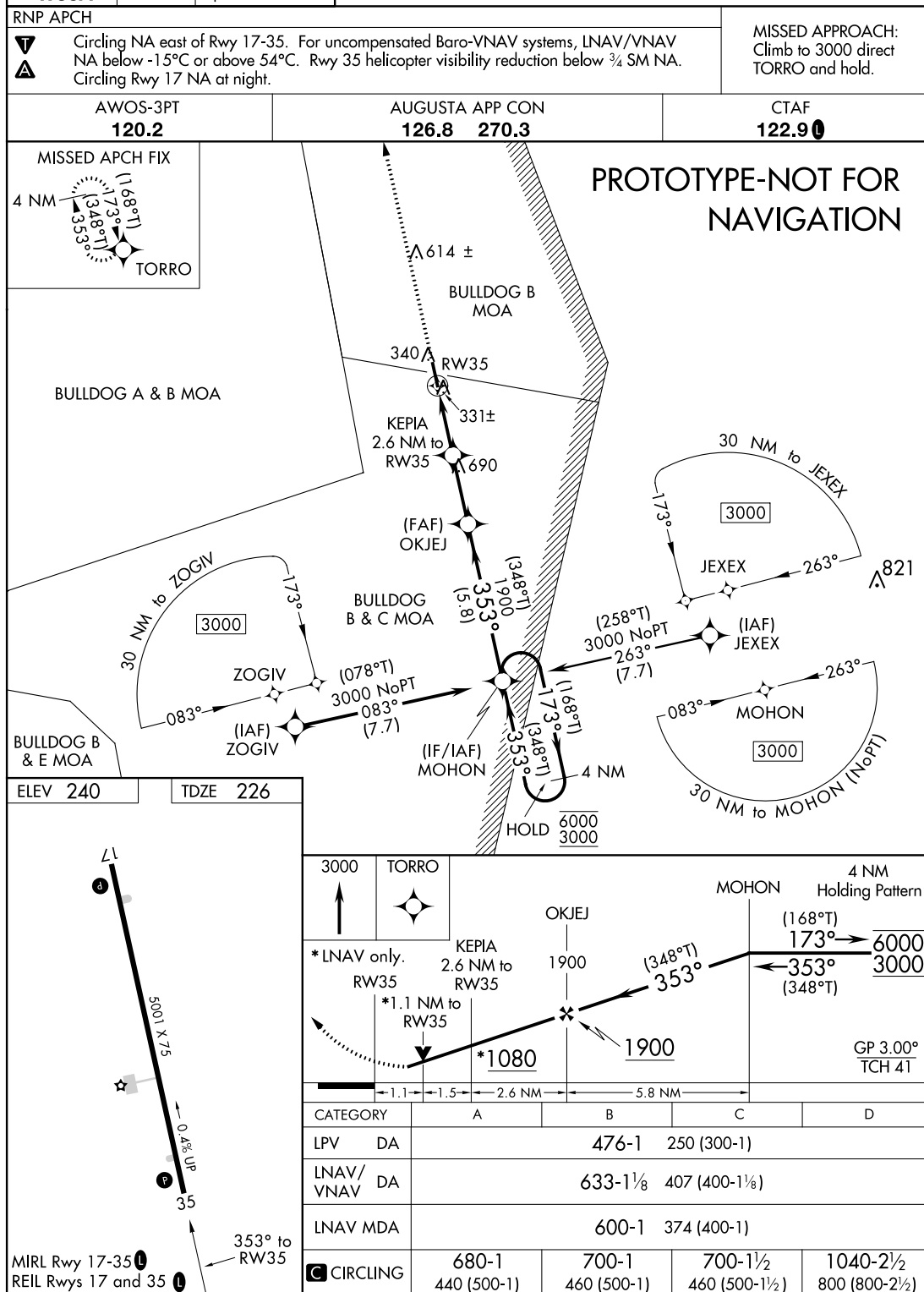
MILLEN, GEORGIA

AL-10240 (FAA)

FIG

WAAS CH <b>53718</b> <b>W35A</b>	APP CRS <b>353°</b>	Rwy Idg TDZE Apt Elev	<b>5001</b> <b>226</b> <b>240</b>
--	------------------------	-----------------------------	---

# **RNAV (GPS) RWY 35** MILLEN (2J5)



**AUTOMATED AL-10240 RNAV (GPS) RWY 35**

SE-4  
3/4/19  
COMPILER: HD  
REVIEWER:  
DBL CHKR:  
EFF: FIG

MILLEN, GEORGIA

32°54'N-81°58'W

MILLEN (2J5)

# **RNAV (GPS) RWY 35**

Amdt 2 FIG

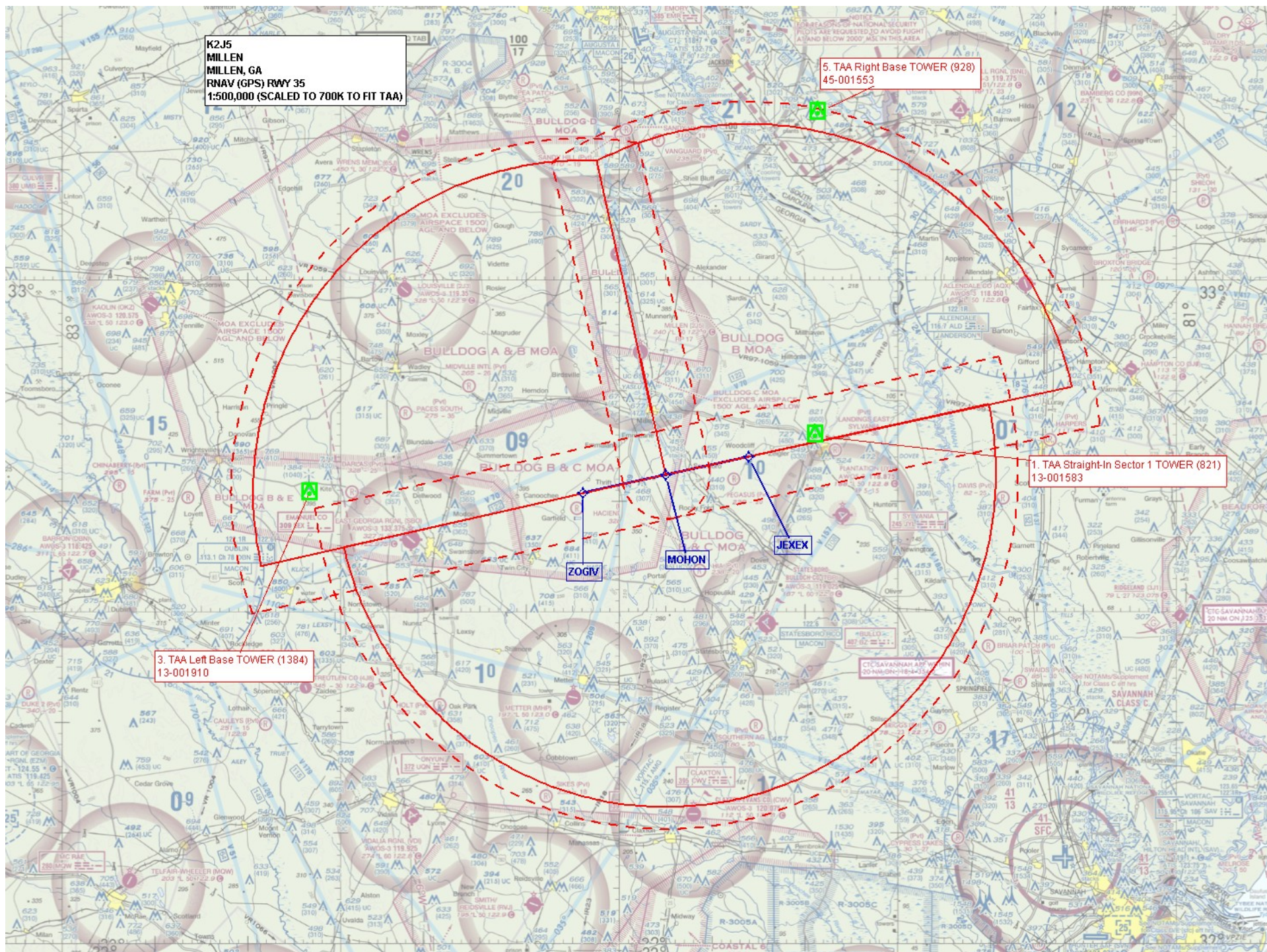


K2J5  
MILLEN, GA  
RNAV (GPS) RWY 35  
1:500,000 (SCALED TO 700K TO FIT TAA)

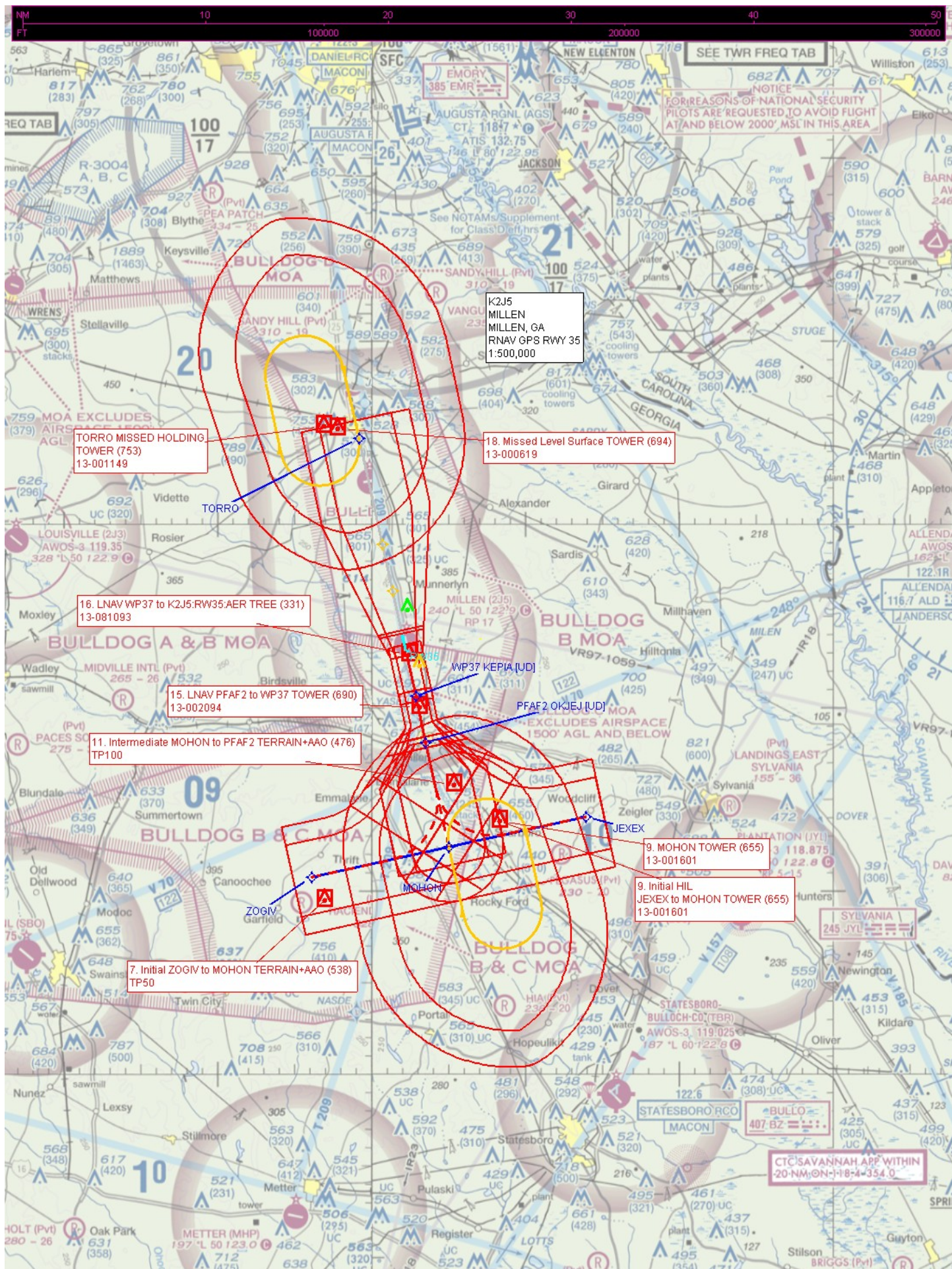
5. TAA Right Base TOWER (928)  
45-001553

1. TAA Straight-In Sector 1 TOWER (821)  
13-001583

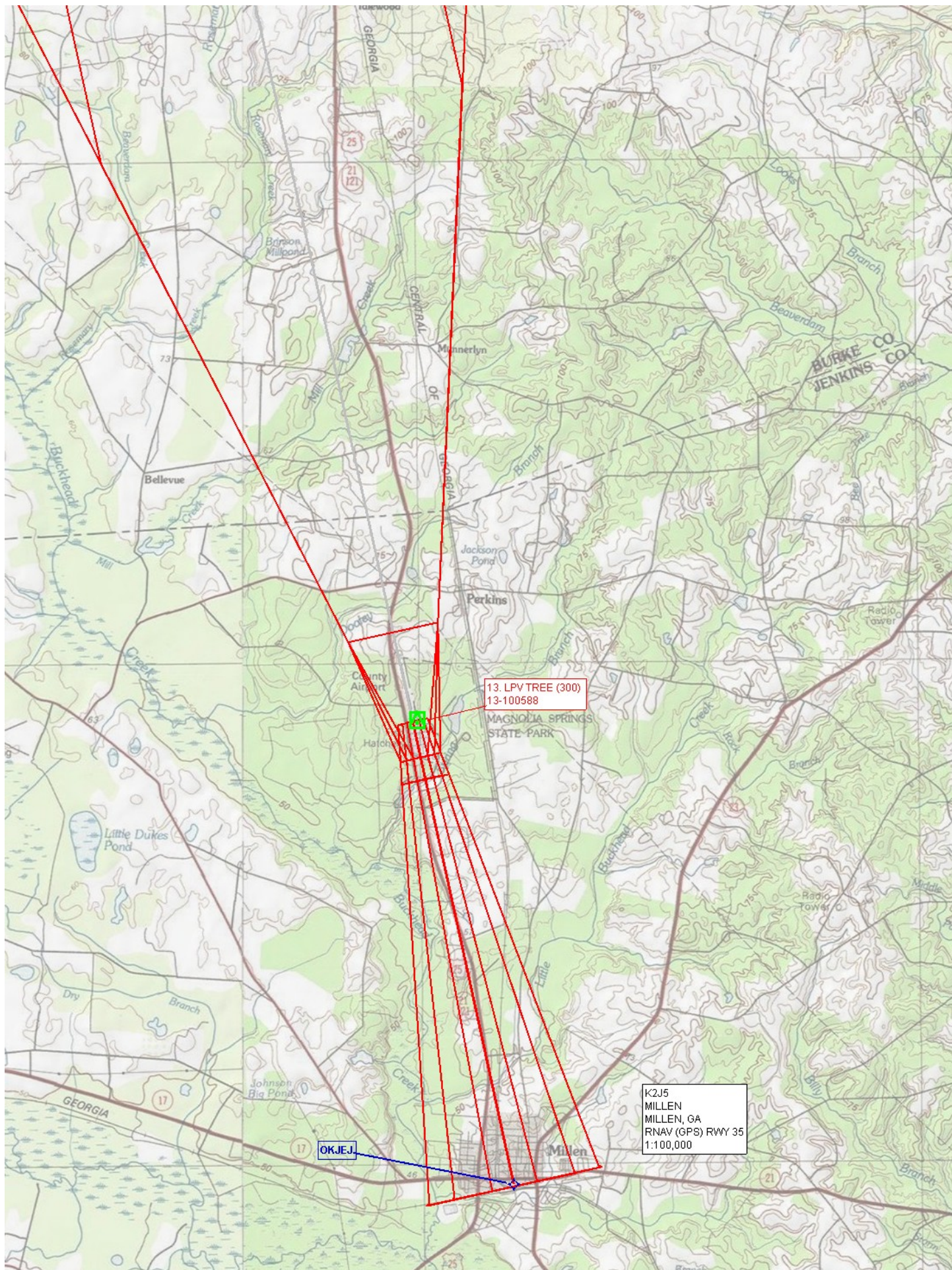
3. TAA Left Base TOWER (1384)  
13-001910











13. LPV TREE (300)  
13-100588

K2J5  
MILLEN, GA  
RNAV (GPS) RWY 35  
1:100,000

OKJEJ



