


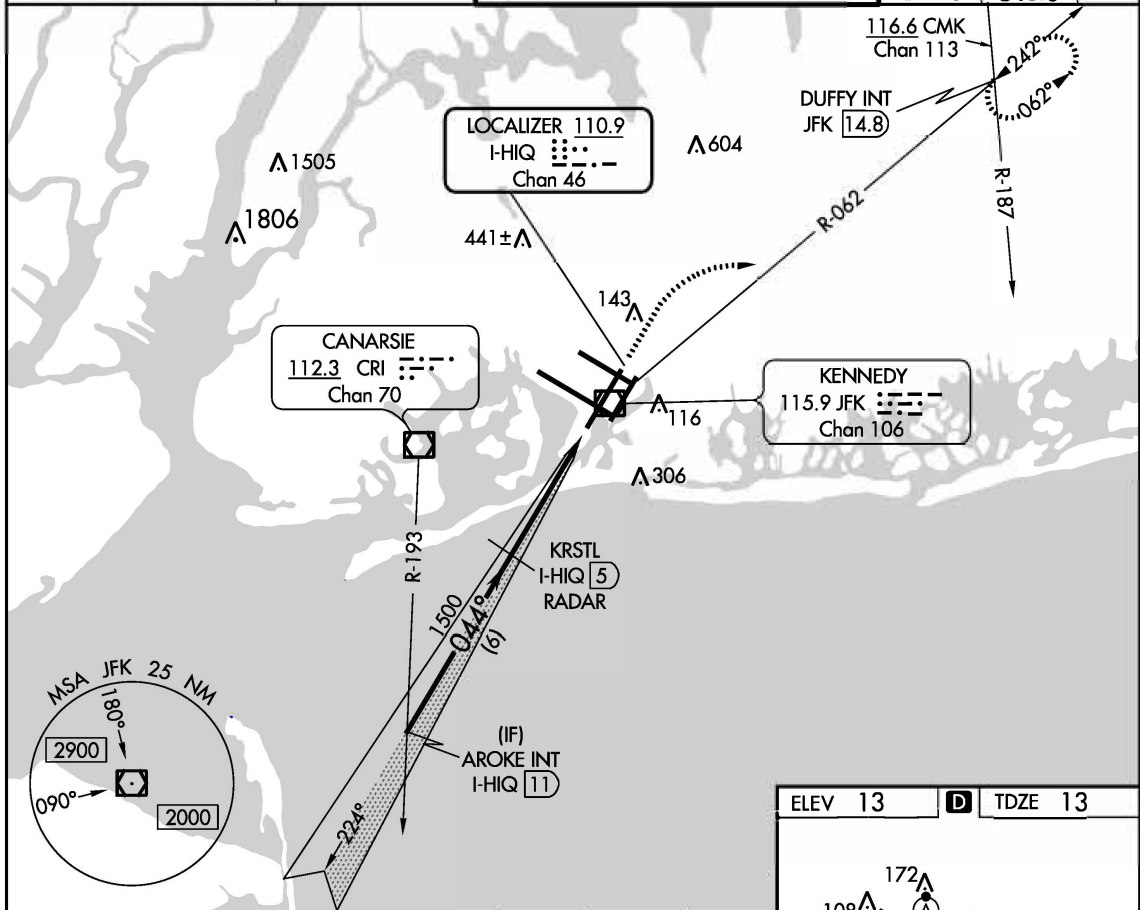
Flight Procedure Tracking Form		Action: AMENDMENT	Task Type: IAP	Date Open: 06/26/2018	Task #: 2018062528908101002	Request #: 20180625289081
Procedure: ILS OR LOC RWY 4L AMDT 11C			Airport ID: KJFK	Airport: JOHN F KENNEDY INTL		Reimbursable #: NO
City: NEW YORK	ST: NY	GPS #:	Estimated Chart Date: 11/08/2018		FICO #:	
Fac ID: HIQ		Fac. Type: ILS			Specialist: RAFAEL MARTINEZ	
Procedure Review						
	Rec'd	Rel'd	Full Name	Comments		
Lead:	06/25/2018	07/16/2018	DAVID TEFFETELLER			
QA:	07/16/2018					
Liaison:						
Procedure Comments: ENROUTE-NON Remark Type: INFORMATION P-NOTAM PROCESSED IAW AIRCRAFT OPERATIONS GROUP (AJW-333) MEMO, DECEMBER 22, 2017, SUBJECT: FLIGHT INSPECTION REVIEW NOT REQUIRED. CONTACT: PATRICK MULQUEEN 405-954-4073/DAVID TEFFETELLER 202-267-5177.						

ILS or LOC RWY 4L
JOHN F KENNEDY INTL (JFK)

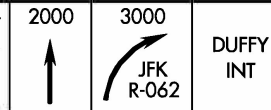
MISSED APPROACH: Climb to 2000 then climbing right turn to 3000 on JFK VOR/DME R-062 to DUFFY INT/JFK 14.8 DME and hold.

T
A Simultaneous approach authorized.

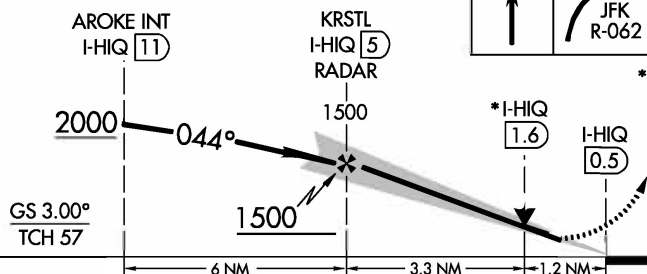
D-ATIS			NEW YORK APP CON		KENNEDY TOWER		GND CON	CLNC DEL	CPDLC
(ARR/DEP)	(ARR-NE)	(ARR-SW)			Rwys 4R/22L and 13L/31R	119.1 281.55			
128.725	117.7	115.4	128.125	269.0	Rwys 4L/22R and 13R/31L	123.9 281.55	348.6	348.6	



VGSI and ILS glidepath not coincident
(VGSI Angle 3.00/TCH 75).



* LOC only.



CATEGORY	A	B	C	D
S-ILS 4L	223/40 210 (300-3/4)			
S-LOC 4L	460/55 447 (500-1/4)		460-1 3/8 447 (500-1/8)	
C CIRCLING	640-1 627 (700-1)		640-1 3/4 627 (700-1 3/4)	660-2 647 (700-2)

