



Flight Procedure Tracking Form		Action: AMENDMENT	Task Type: SID	Date Open: 06/20/2018	Task #: 2018062028465601001	Request #: 20180620284656
Procedure: SID GTLKE TWO CLEVELAND OH KCLE			Airport ID: KCLE	Airport: CLEVELAND-HOPKINS INTL	Reimbursable #: NO	
City: CLEVELAND	ST: OH	GPS #:	Estimated Chart Date: 02/28/2019		FICO #:	
Fac ID: N/A		Fac. Type:		Specialist: HEIDI SNIDER		
Procedure Review						
	Rec'd	Rel'd	Full Name	Comments		
Lead:	06/20/2018	10/29/2018	ROBERT HAMILTON	 Digitally signed by		
QA:	10/29/2018	11/02/2018	KISSY MAXFIELD	 GEORGETTE P BARNETT		
Liaison:				Dec 12, 2018		
Procedure Comments: ENROUTE Remark Type: INFORMATION ABBREVIATED AMENDMENT UPDATE ALTITUDES AND COMMUNICATIONS. PROCESSED IAW AIRCRAFT OPERATIONS GROUP (AJW-33) MEMO, OCTOBER 3, 2018, SUBJECT: FLIGHT INSPECTION NOT REQUIRED. 10/26/2018: THIS IS A CORRECTED COPY OF THE FORM APPROVED ON 10/23/2018. 1. UPDATED DEPARTURE ROUTE DESCRIPTION FROM ...ON TRACK 275.77 TO BRNIN, THEN ON TRACK 285.15 TO GTLKE THEN ON (TRANSITION). MAINTAIN 14000, EXPECT FILED ALTITUDE TEN MINUTES AFTER DEPARTURE. TO ...ON TRACK 275.77 TO BRNIN, THEN ON TRACK 285.15 TO GTLKE THEN ON (TRANSITION). MAINTAIN 14000 OR LOWER FILED ALTITUDE, EXPECT HIGHER FILED ALTITUDE TEN MINUTES AFTER DEPARTURE. - ATC REQUEST. 12/11/2018: THIS IS A CORRECTED COPY OF THE FORM APPROVED ON 11/02/2018. 1. UPDATED DEPARTURE ROUTE DESCRIPTION FROM ...ON TRACK 275.77 TO BRNIN, THEN ON TRACK 285.15 TO GTLKE THEN ON (TRANSITION). MAINTAIN 14000 OR LOWER FILED ALTITUDE, EXPECT HIGHER FILED ALTITUDE TEN MINUTES AFTER DEPARTURE; TO ...ON TRACK 275.77 TO BRNIN, THEN ON TRACK 285.15 TO GTLKE THEN ON (TRANSITION). MAINTAIN 14000, EXPECT FILED ALTITUDE TEN MINUTES AFTER DEPARTURE. - ATC REQUEST. CONTACT ROBERT HAMILTON: 405-954-4608						

PROTOTYPE-NOT FOR NAVIGATION

GTKE TWO DEPARTURE (RNAV)
(GTKE2, GTKE) FIG
CLEVELAND, OHIO
CLEVELAND-HOPKINS INTL (CLE)
GTKE TWO DEPARTURE (RNAV)
(GTKE2, GTKE) FIG

D-ATIS 132.375
CLNC DEL 125.05 273.45
CPDLC
GND CON 6R/24L, 10/28 121.7 273.45
6L/24R 133.6 273.45
CLEVELAND DEP CON 128.25 346.325
CLEVELAND TOWER 6R/24L, 10/28 120.9 273.45
6L/24R 124.5 273.45
CLEVELAND APP CON 6R/24L, 28 124.0 354.025
6L/24R, 10 126.55 354.025

TOP ALTITUDE:
14000

TAKEOFF MINIMUMS

Rwys 6L/R, 24L/R, 28: Standard with a minimum climb of 500' per NM to 1300.

Rwys 10: Standard with a minimum climb of 500' per NM to 1600.

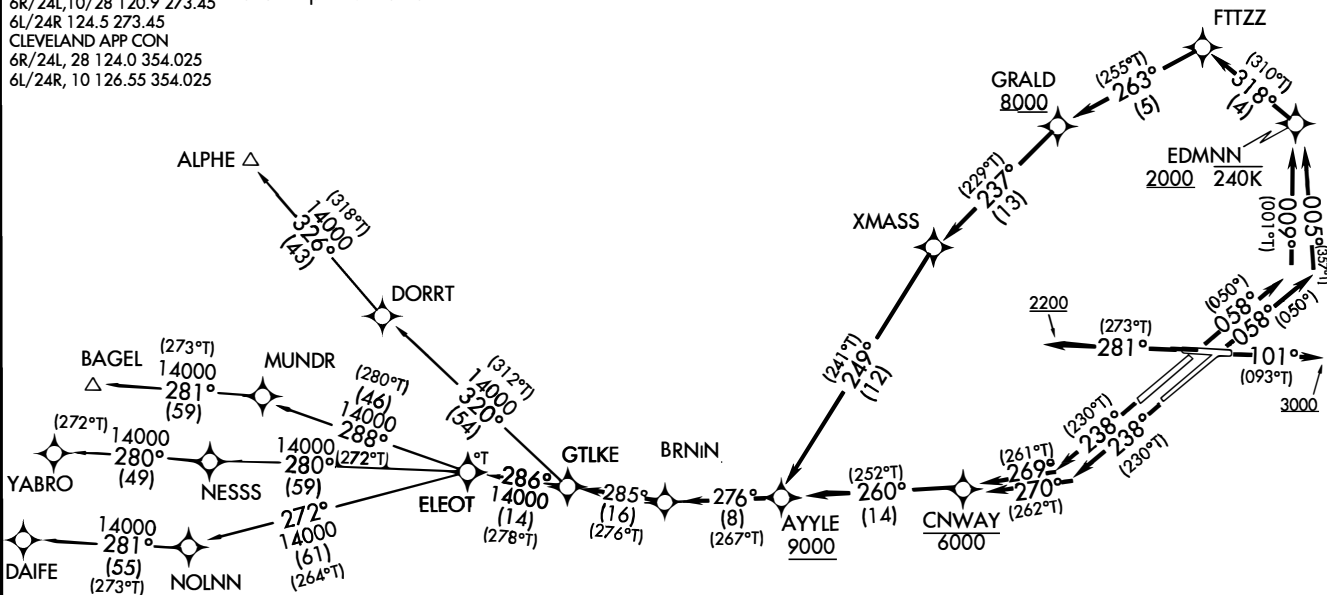
NOTE: RADAR required.

NOTE: RNAV 1.

NOTE: DME/DME/IRU or GPS required.

NOTE: BAGEL TRANSITION: FOR AIRCRAFT LANDING MDW ONLY, OR AS ASSIGNED BY ATC.

NOTE: DAIFE TRANSITION: FOR AIRCRAFT LANDING ORD ONLY, OR AS ASSIGNED BY ATC.



NOTE: Chart not to scale.

(NARRATIVE ON FOLLOWING PAGE)

GTKE TWO DEPARTURE (RNAV)
(GTKE2, GTKE) FIG
AL-84 (FAA)
CLEVELAND-HOPKINS INTL (CLE)
CLEVELAND, OHIO

GTLKE TWO DEPARTURE (RNAV)



DEPARTURE ROUTE DESCRIPTION

TAKEOFF RWY 06L: Climb on heading 058° to intercept course 009° to cross EDMNN at or above 2000 and at or below 240K, then on track 318° to FTTZZ, then on track 263° to cross GRALD at or above 8000, then on track 237° to XMASS, then on track 249° to cross AYYLE at or above 9000, thence...

TAKEOFF RWY 06R: Climb on heading 058° to intercept course 005° to cross EDMNN at or above 2000 and at or below 240K, then on track 318° to FTTZZ, then on track 263° to cross GRALD at or above 8000, then on track 237° to XMASS, then on track 249° to cross AYYLE at or above 9000, thence...

TAKEOFF RWY 10: Climb on heading 101° to 3000, then as assigned by ATC for RADAR vectors to cross AYYLE at or above 9000, thence...

TAKEOFF RWY 24L: Climb on heading 238° to intercept course 270° to cross CNWAY at or below 6000, then on track 260° to cross AYYLE at or above 9000, thence...

TAKEOFF RWY 24R: Climb on heading 238° to intercept course 269° to cross CNWAY at or below 6000, then on track 260° to cross AYYLE at or above 9000, thence...

TAKEOFF RWY 28: Climb on heading 281° to 2200, then as assigned by ATC for RADAR vectors to cross AYYLE at or above 9000, thence...

... on track 276° to BRNIN, then on track 285° to GTLKE then on (transition). Maintain 14000 or lower filed altitude, expect higher filed altitude ten minutes after departure.

- ALPHE TRANSITION (GTLKE2.ALPHE)
- BAGEL TRANSITION (GTLKE2.BAGEL)
- DAIFE TRANSITION (GTLKE2.DAIFE)
- YABRO TRANSITION (GTLKE2.YABRO)

PROTOTYPE-NOT FOR NAVIGATION

GTIKE ONE DEPARTURE (RNAV)
(GTIKE1, GTIKE) FIG

CLEVELAND, OHIO
CLEVELAND-HOPKINS INTL (CLE)
GTIKE ONE DEPARTURE (RNAV)

D-ATIS
132.375
CLNC DEL
125.05 273.45
CPDLC
GND CON
6R/24L, 10/28 121.7 273.45
6L/24R 133.6 273.45
CLEVELAND DEP CON
128.25 346.325
CLEVELAND TOWER
6R/24L, 10/28 120.9 273.45
6L/24R 124.5 273.45
CLEVELAND APP CON
6R/24L, 28 124.0 354.025
6L/24R, 10 126.55 354.025

TOP ALTITUDE:
14000

TAKEOFF MINIMUMS

Rwys 6L/R, 24L/R, 28: Standard with a minimum climb
of 500' per NM to 1300.

Rwys 10: Standard with a minimum climb
of 500' per NM to 1600.

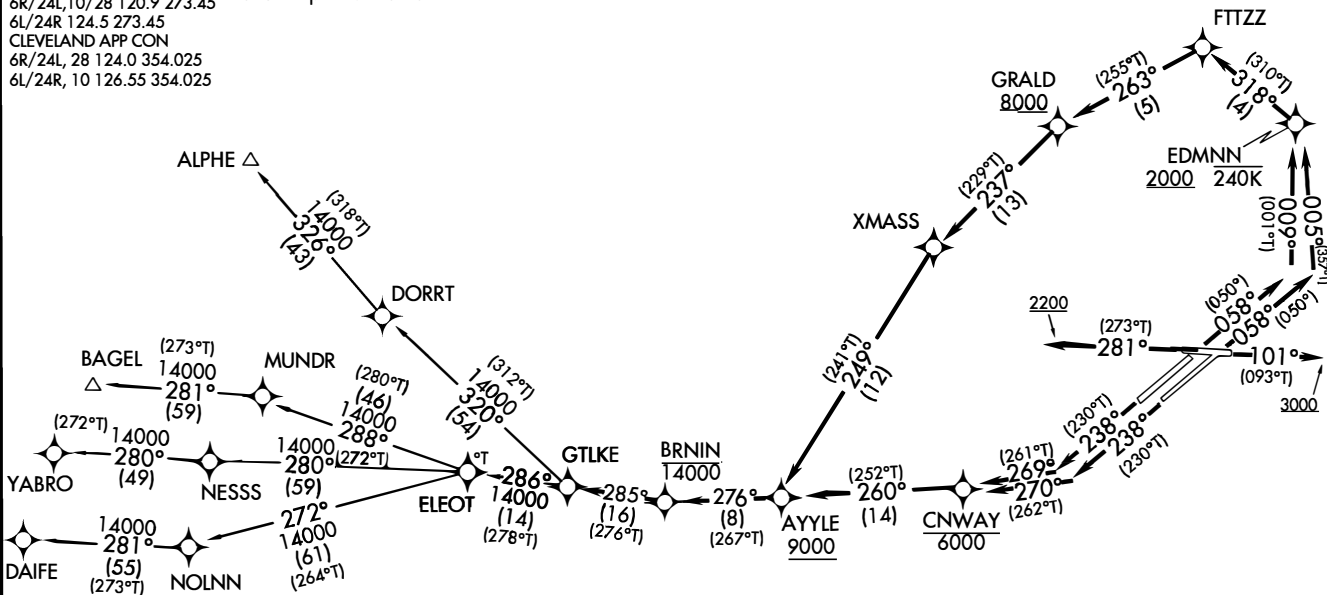
NOTE: RADAR required.

NOTE: RNAV 1.

NOTE: DME/DME/IRU or GPS required.

NOTE: BAGEL TRANSITION: FOR AIRCRAFT
LANDING MDW ONLY, OR AS ASSIGNED BY ATC.

NOTE: DAIFE TRANSITION: FOR AIRCRAFT
LANDING ORD ONLY, OR AS ASSIGNED BY ATC.



NOTE: Chart not to scale.

(NARRATIVE ON FOLLOWING PAGE)

(GTIKE1, GTIKE) FIG
GTIKE ONE DEPARTURE (RNAV)
AL-84 (FAA)

CLEVELAND-HOPKINS INTL (CLE)
CLEVELAND, OHIO

GTLKE ONE DEPARTURE (RNAV)



DEPARTURE ROUTE DESCRIPTION

TAKEOFF RWY 06L: Climb on heading 058° to intercept course 009° to cross EDMNN at or above 2000 and at or below 240K, then on track 318° to FTTZZ, then on track 263° to cross GRALD at or above 8000, then on track 237° to XMASS, then on track 249° to cross AYYLE at or above 9000, thence...

TAKEOFF RWY 06R: Climb on heading 058° to intercept course 005° to cross EDMNN at or above 2000 and at or below 240K, then on track 318° to FTTZZ, then on track 263° to cross GRALD at or above 8000, then on track 237° to XMASS, then on track 249° to cross AYYLE at or above 9000, thence...

TAKEOFF RWY 10: Climb on heading 101° to 3000, then as assigned by ATC for RADAR vectors to cross AYYLE at or above 9000, thence...

TAKEOFF RWY 24L: Climb on heading 238° to intercept course 270° to cross CNWAY at or below 6000, then on track 260° to cross AYYLE at or above 9000, thence...

TAKEOFF RWY 24R: Climb on heading 238° to intercept course 269° to cross CNWAY at or below 6000, then on track 260° to cross AYYLE at or above 9000, thence...

TAKEOFF RWY 28: Climb on heading 281° to 2200, then as assigned by ATC for RADAR vectors to cross AYYLE at or above 9000, thence...

...on track 276° to cross BRNIN at or below 14000, then on track 285° to GTLKE then on (transition). Maintain 14000, expect filed altitude ten minutes after departure.

ALPHE TRANSITION (GTLKE1.ALPHE)

BAGEL TRANSITION (GTLKE1.BAGEL)

DAIFE TRANSITION (GTLKE1.DAIFE)

YABRO TRANSITION (GTLKE1.YABRO)

PROTOTYPE-NOT FOR NAVIGATION