

<b>Flight Procedure Tracking Form</b>		<b>Action:</b> FLIGHT CHECK	<b>Task Type:</b> IAP	<b>Date Open:</b> 06/19/2018	<b>Task #:</b> 2018061929605303001	<b>Request #:</b> 20180619296053
<b>Procedure:</b> RNAV (GPS) RWY 17L AMDT 0B				<b>Airport ID:</b> KGYI	<b>Airport:</b> NORTH TEXAS RGNL/PERRIN FIELD	<b>Reimbursable #:</b> NO
<b>City:</b> SHERMAN/DENISON	<b>ST:</b> TX	<b>GPS #:</b>	<b>Estimated Chart Date:</b> 08/15/2019		<b>FICO #:</b>	
<b>Fac ID:</b> N/A		<b>Fac. Type:</b>			<b>Specialist:</b> THOR CORNELL	
<b>Procedure Review</b>						
	<b>Rec'd</b>	<b>Rel'd</b>	<b>Full Name</b>	<b>Comments</b>		
<b>Lead:</b>	06/20/2018			QUALITY Digitally signed by		
<b>QA:</b>				24 DAVID W SAUER		
<b>Liaison:</b>				CHECKED May 10, 2019		
<b>Procedure Comments:</b> ENROUTE-NON <b>Remark Type:</b> INFORMATION  ACTIVE DATA USED FOR KGYI AND RUNWAYS. AMENDMENT DUE TO NEW RUNWAYS. CONTACT WARDELL HENNING: 405.954.9954.						

SHERMAN/DENISON, TEXAS

AL-389 (FAA)

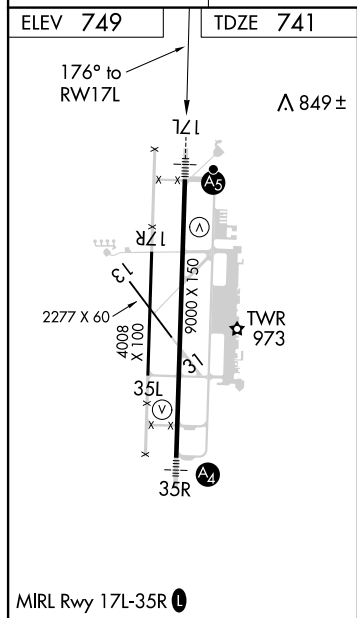
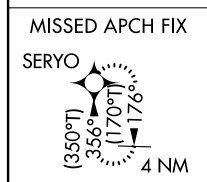
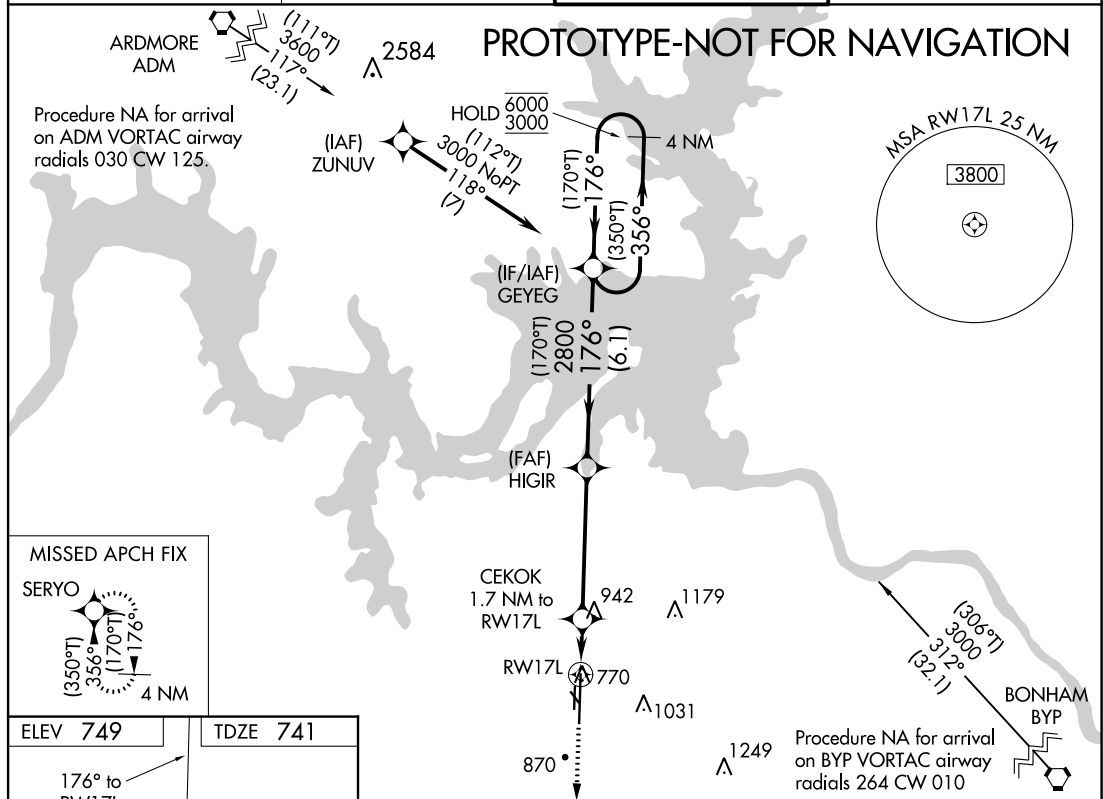
FIG


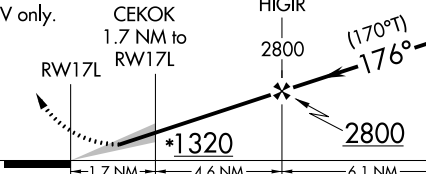

WAAS CH <b>86528</b> <b>W17A</b>	APP CRS <b>176°</b>	Rwy Idg TDZE <b>741</b> Apt Elev <b>749</b>
--	------------------------	---

# **RNAV (GPS) RWY 17L** NORTH TEXAS RGNL/PERRIN FIELD (GYI)

RNP APCH	MALSR	MISSED APPROACH: Climb to 3000 direct SERYO and hold.
----------	-------	---

ATIS <b>118.775</b>	FORT WORTH CENTER <b>124.75 323.0</b>	NORTH TEXAS TOWER ★ <b>120.575</b> (CTAF) <b>233.7</b>	GND CON <b>124.125</b>
------------------------	--	---	---------------------------



3000 ↑	SERYO 	VGSI and RNAV glidepath not coincident (VGSI angle 3.00/TCH 48).		4 NM Holding Pattern	
*LNAV only.		CEKOK 1.7 NM to RW17L	HIGIR 2800	GEYEG (350°T) 356°→ ←176° (170°T)	
		*1320	2800	6000 3000	
		1.7 NM	4.6 NM	6.1 NM	
CATEGORY		A	B	C	D
LPV	DA	941-½		200 (200-½)	
LNAV/ VNAV	DA	1015-½		274 (300-½)	
LNAV MDA		1200-½ 459 (500-½)		1200-¾ 459 (500-¾)	
 CIRCLING		1300-1 551 (600-1)		1400-1¾ 651 (700-1¾)	1540-2½ 791 (800-2½)

AUTOMATED AL-389 RNAV (GPS) RWY 17L

SC-2  
02/26/19  
COMPILER: HD  
REVIEWER:  
DBL CHKR:  
EFF DATE: FIG

SHERMAN/DENISON, TEXAS  
Orig-B FIG

33°43'N-96°40'W

NORTH TEXAS RGNL/PERRIN FIELD (GYI)  
**RNAV (GPS) RWY 17L**

WAAS CH <b>86528</b> <b>W17A</b>	APP CRS <b>176°</b>	Rwy Idg <b>9000</b> TDZE <b>741</b> Apt Elev <b>749</b>
--	------------------------	---



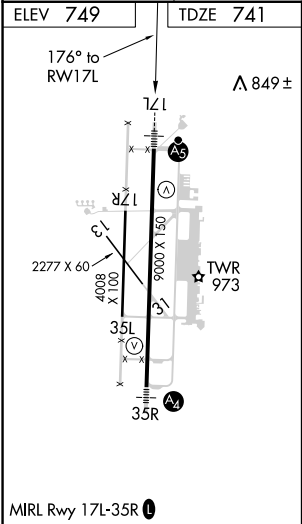
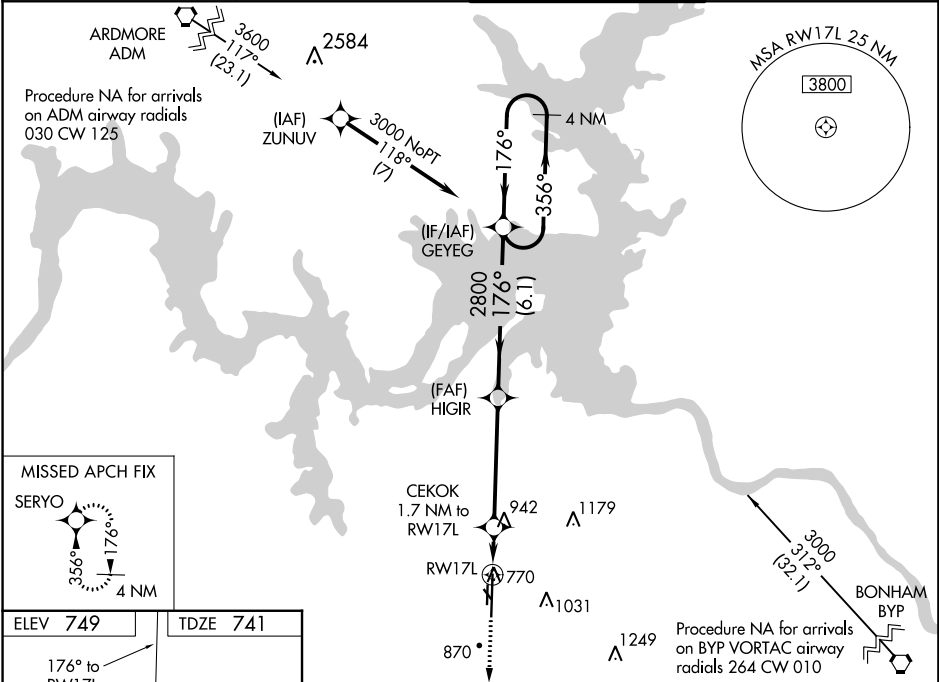
**RNAV (GPS) RWY 17L**  
NORTH TEXAS RGNL/PERRIN FIELD (GYI)


▼  
▲  
Night landing Rwy 13, 31 NA. Baro-VNAV NA when using Durant altimeter setting.  
For uncompensated Baro-VNAV systems, LNAV/VNAV NA below -16°C (4°F) or above 39°C (102°F). DME/DME RNP-0.3 NA. When local altimeter setting not received, use Durant altimeter setting and increase all DA 52 feet, all MDA 60 feet, LNAV/VNAV all Cats, and LNAV C/D visibility 1/8 mile, increase Circling Cat C/D visibility 1/4 mile.

MALSR  
AS

MISSED APPROACH:  
Climb to 3000 direct  
SERYO and hold.

ATIS <b>118.775</b>	FORT WORTH CENTER <b>124.75 323.0</b>	NORTH TEXAS TOWER ★ <b>120.575 (CTAF) 233.7</b>	GND CON <b>124.125</b>
------------------------	--	--	---------------------------



3000 ↑	SERYO 	VGSI and RNAV glidepath not coincident (VGSI angle 3.00°/TCH 48).		4 NM Holding Pattern	
*LNAV only.		CEKOK 1.7 NM to RW17L	HIGIR 2800	GEYEG	



