

Flight Procedure Tracking Form		Action: FLIGHT CHECK	Task Type: IAP	Date Open: 07/25/2018	Task #: 2018061531523101007	Request #: 20180615315231
Procedure: VOR OR TACAN-B AMDT 6A			Airport ID: NSTU	Airport: PAGO PAGO INTL		Reimbursable #: NO
City: PAGO PAGO	ST:	GPS #:	Estimated Chart Date: 11/08/2018		FICO #:	
Fac ID: TUT		Fac. Type: VORTAC			Specialist: KELLY DEAN	
Procedure Review						
	Rec'd	Rel'd	Full Name	Comments		
Lead:	06/15/2018			<div style="border: 1px solid green; padding: 5px; display: inline-block;"> APPROVED <small>By Steven M Barnett at 9:02 am, Aug 06, 2018</small> </div> <div style="text-align: right; margin-top: -20px;"> QUALITY 23 CHECKED </div>		
QA:						
Liaison:						
Procedure Comments: ENROUTE-NON Remark Type: INFORMATION P-NOTAM FDC 8/1800 REQUEST FC TABLETOP WAIVER CANCELLATION (1): AIRSPACE POC FOR THIS ACTION IS DON LANIER 405-954-8242						

1. FLIGHT PROCEDURE IDENTIFICATION:

PAGO PAGO, AS
PAGO PAGO INTL (NSTU)
VOR OR TACAN-B

2. WAIVER REQUIRED AND APPLICABLE STANDARD:

FAAO 8260.19H, CH 5, PARA 5-2-1a AIRSPACE...To afford separation from other aircraft, all instrument flight procedures, to include the TAA, must be contained in controlled airspace to the maximum extent possible within the capabilities of the ATC system.

3. REASON FOR WAIVER (JUSTIFICATION FOR NONSTANDARD TREATMENT):

Procedure is located in the American Somoas. Controlled airspace does not exist below 9500 ft MSL.

4. EQUIVALENT LEVEL OF SAFETY PROVIDED:

Aircraft are issued a cruise clearance by Auckland Oceanic Control (NZZO) and Faleolo Approach (Samoa) provides Non-Radar advisories below New Zeland's airspace. Operations at NSTU are one-in, one-out.

Charted briefing strip note "No controlled airspace below 9500 feet." in standard print and planview note "PROCEDURE NOT CONTAINED WITHIN CONTROLLED AIRSPACE." in bold 14 pt text on procedure approach plate.

5. ALTERNATIVE ACTIONS DEEMED NOT FEASIBLE:

The creation of new controlled airspace to contain NSTU procedures would not provide any additional level of safety since there is no US control facility or any US Air Traffic Control presence in American Samoa. Oakland Oceanic (KZAK) does NOT have the capability of providing ATC services for any proposed airspace surrounding American Samoa. The creation of airspace to include construction of a facility and manning it were considered not feasible.

6. COORDINATION WITH USER ORGANIZATIONS (SPECIFY):

AJV-54:_____

7. SUBMITTED BY:

DATE	OFFICE IDENTIFICATION	TITLE	SIGNATURE
	AJV-54	Manager, IFP Group	Steven L. Szukala

8. AFS ACTIONS:

☒ APPROVED ☐ DISAPPROVED ☐ NOT REQUIRED

Digitally signed by

DONALD H LANIER

May 01, 2018

COMMENTS: This Waiver is temporarily approved until May 25, 2019 or until airspace action

is complete, whichever occurs first.

DATE	ROUTING SYMBOL	SIGNATURE
		Danny E Hamilton Signed By: Danny E Hamilton Wed Jun 6 2018 15:37:33 GMT-05:00:00 (Central Standard Time)

This waiver is canceled effective 13 September, 2018.
Obtained airspace effective 13 September, 2018.

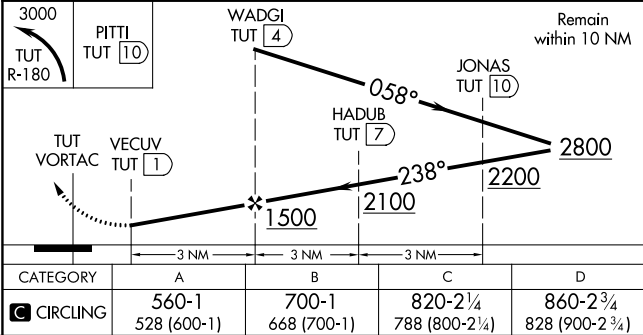
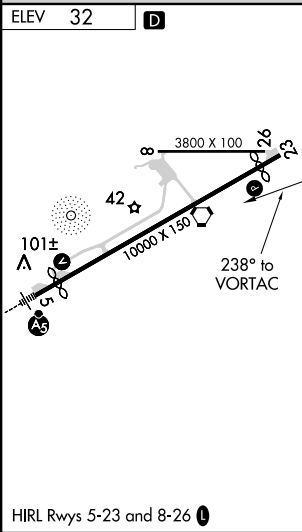
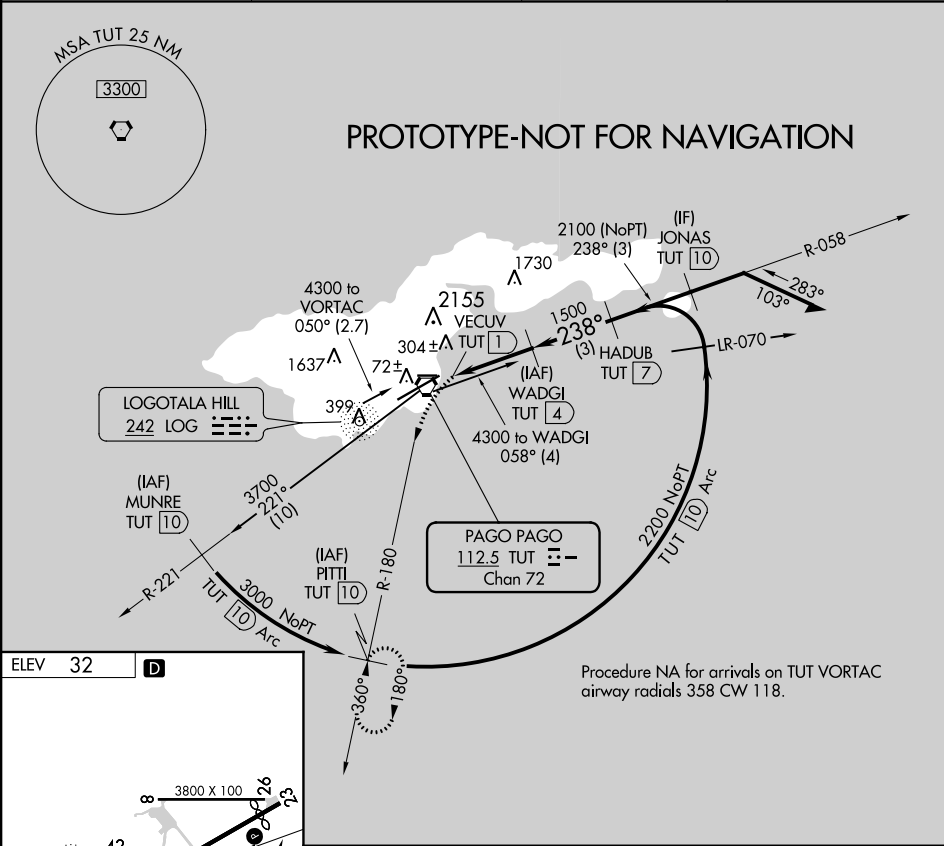
Steven L. Szukala
IFP Group Manager, AJV-54

VORTAC TUT	APP CRS	Rwy Idg	N/A
112.5	238°	TDZE	N/A
Chan 72		Apt Elev	32

VOR or TACAN-B
PAGO PAGO INTL (PPG) (NSTU)

DME Required.	MISSED APPROACH: Climbing left turn to 3000 on TUT VORTAC R-180 to PITTI/10 DME and hold, continue climb-in-hold to 3000.
When local altimeter setting not received, procedure NA. Circling NA northwest of Rwy 5-23.	

AWOS-3PT 127.925	FALEOLO APP CON 118.1 6.553 (HF)	CTAF 122.9	118.3 0
---------------------	-------------------------------------	---------------	---------



OLD

PAGO PAGO, AS

AL-5018 (FAA)

18200

VORTAC TUT 112.5 Chan 72	APP CRS 238°	Rwy Idg TDZE Apt Elev N/A N/A 32
--	------------------------	--

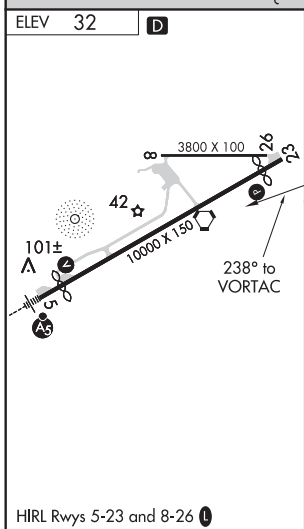
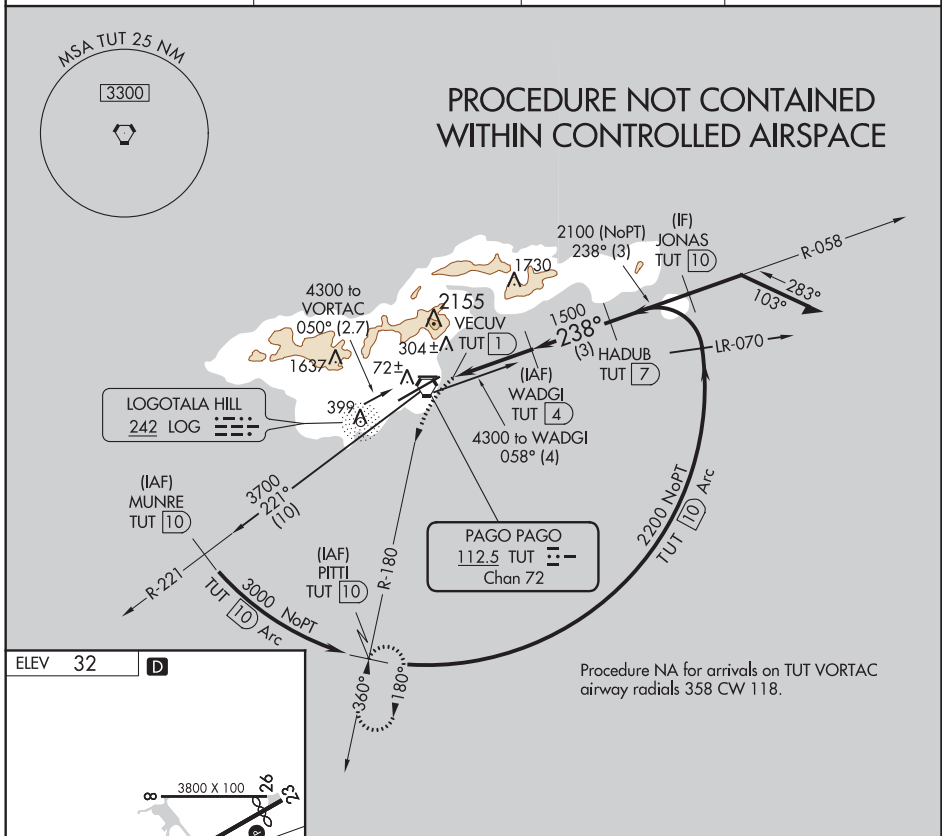
VOR or TACAN-B
PAGO PAGO INTL (PPG) (NSTU)

DME Required. ▼ When local altimeter setting not received, procedure NA. ▲ Circling NA northwest of Rwy 5-23. No controlled airspace below 9500 feet.	MISSED APPROACH: Climbing left turn to 3000 on TUT VORTAC R-180 to PITTI/10 DME and hold, continue climb-in-hold to 3000.
---	---

AWOS-3PT 127.925	FALEOLO APP CON 118.1 6.553 (HF)	CTAF 122.9	118.3 0
----------------------------	--	----------------------	----------------

PAC, 19 JUL 2018 to 13 SEP 2018

PAC, 19 JUL 2018 to 13 SEP 2018



3000 TUT R-180	PITTI TUT 10	WADGI TUT 4	JONAS TUT 10	2800
TUT VORTAC	VECUV TUT 1	HADUB TUT 7	2100	2200
3 NM	3 NM	3 NM	3 NM	3 NM
CATEGORY	A	B	C	D
CIRCLING	560-1 528 (600-1)	700-1 668 (700-1)	820-2¼ 788 (800-2¼)	860-2¾ 828 (900-2¾)

PAGO PAGO, AS
Amdt 6 19JUL18

14°20'S-170°43'W

PAGO PAGO INTL (PPG) (NSTU)
VOR or TACAN-B