


<b>Flight Procedure Tracking Form</b>		<b>Action:</b> AMENDMENT	<b>Task Type:</b> IAP	<b>Date Open:</b> 06/15/2018	<b>Task #:</b> 2018061528598101001	<b>Request #:</b> 20180615285981
<b>Procedure:</b> ILS OR LOC RWY 31 AMDT 10C			<b>Airport ID:</b> KINL	<b>Airport:</b> FALLS INTL-EINARSON FIELD		<b>Reimbursable #:</b> NO
<b>City:</b> INTERNATIONAL FALLS	<b>ST:</b> MN	<b>GPS #:</b>	<b>Estimated Chart Date:</b> 04/25/2019			<b>FICO #:</b>
<b>Fac ID:</b> INL		<b>Fac. Type:</b> ILS			<b>Specialist:</b> TODD BOWLING	
<b>Procedure Review</b>						
	<b>Rec'd</b>	<b>Rel'd</b>	<b>Full Name</b>	<b>Comments</b>		
<b>Lead:</b>	09/10/2018	12/10/2018	KISSY MAXFIELD	<div style="text-align: right;">  <i>Digitally signed by</i>  <b>DAVID TEFFETELLER</b>  Feb 05, 2019 </div>		
<b>QA:</b>	12/03/2018					
<b>Liaison:</b>						
<b>Procedure Comments:</b>			<b>Remark Type:</b> INFORMATION			
<p>PROCESSED IAW AIRCRAFT OPERATIONS GROUP (AJW-33) MEMO, OCTOBER 3, 2018, SUBJECT: FLIGHT INSPECTION REVIEW NOT REQUIRED.</p> <p>CONTACT: WARDELL HENNING: 405.954.9954</p> <p>2/5/2019: THIS IS A CORRECTED COPY OF THE FORM APPROVED ON: 12/7/2018: HODEV 8260-2</p> <p>1. ADDED PAT 2 AIRSPEED (200 KIAS) AND CONTROLLING OBSTACLE.</p> <p>2. CHANGE HOLDING TYPE ACTION FROM: NO CHANGE TO: MODIFY.</p> <p>3. UPDATED PAT 1 CONTROLLING OBSTACLE ID(FROM 52-0029 TO CA-002900).</p>						

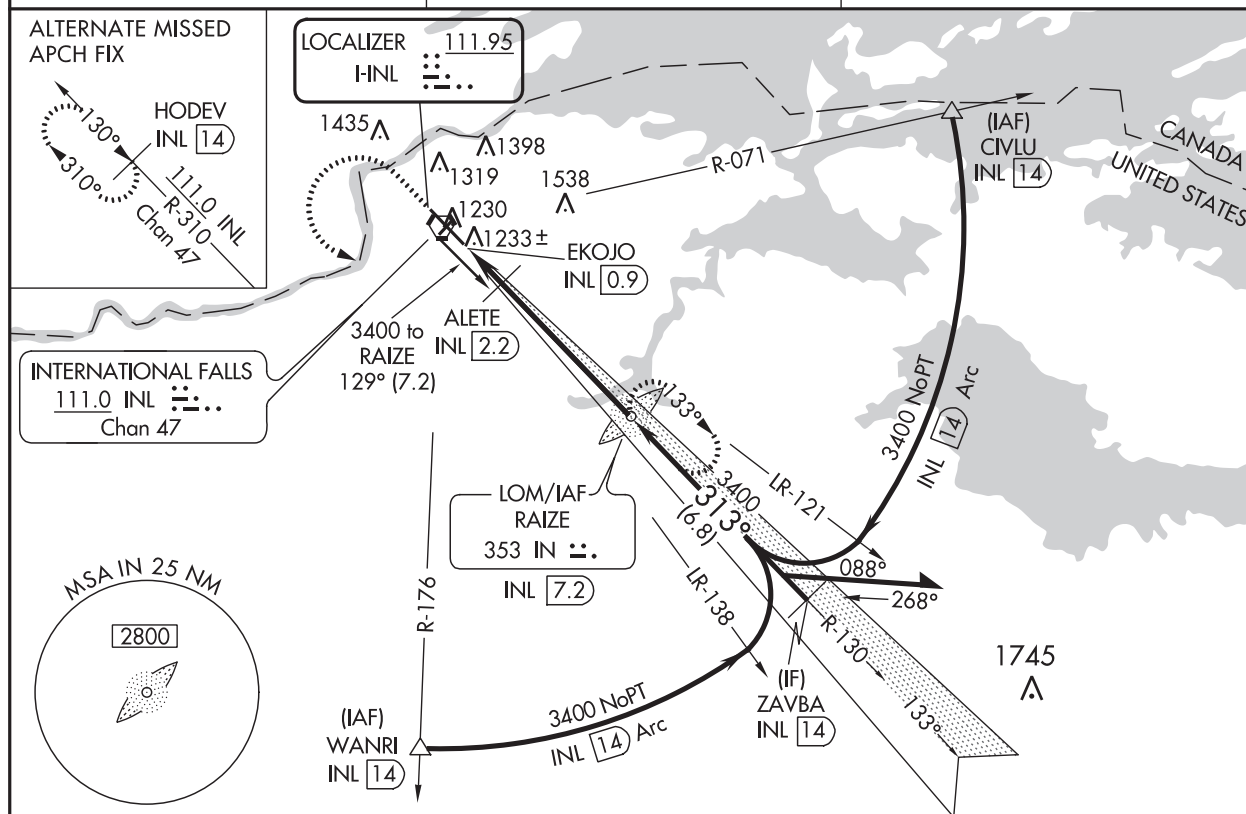
**OLD**

LOC I-INL <b>111.95</b>	APP CRS <b>313°</b>	Rwy Idg <b>7400</b>
	TDZE <b>1166</b>	
	Apt Elev <b>1185</b>	

# **ILS or LOC RWY 31** **FALLS INTL-EINARSON FIELD (INL)**

<b>⚠</b> <b>⚠</b> <b>❄</b> -31°C	Circling to Rwy 4-22 NA at night. ADF required. Autopilot coupled approach NA below 2250 feet. When local altimeter setting not received, use Baudette altimeter setting and increase DA 127 feet and S-ILS visibility ¼ mile all Cats, increase all MDA 140 feet and increase all Cat C/D visibility ¼ mile. Caution opposing ILS continuously on.	<b>MALSR</b> 	<b>MISSED APPROACH:</b> Climb to 2500 then climbing left turn to 3400 direct RAIZE LOM/INL VORTAC 7.2 DME and hold.
--	---	------------------	---

ASOS <b>120.0</b>	MINNEAPOLIS CENTER <b>120.9 377.1</b>	UNICOM <b>122.8 (CTAF) 0</b>
----------------------	--	---------------------------------



ELEV 1185		D		TDZE 1166		2500		3400		IN		IN RAIZE LOM INL 7.2		Remain within 10 NM	
1236±		1231±		1224		1216±		1213±		1209±		1206±		1203±	
1242±		1237±		1230		1222		1215		1208		1201		1194	
1248±		1243±		1236		1228		1221		1214		1207		1200	
1254±		1249±		1242		1234		1227		1220		1213		1206	
1260±		1255±		1248		1240		1233		1226		1219		1212	
1266±		1261±		1254		1246		1239		1232		1225		1218	
1272±		1267±		1260		1252		1245		1238		1231		1224	
1278±		1273±		1266		1258		1251		1244		1237		1230	
1284±		1279±		1272		1264		1257		1250		1243		1236	
1290±		1285±		1278		1270		1263		1256		1249		1242	
1296±		1291±		1284		1276		1269		1262		1255		1248	
1302±		1297±		1290		1282		1275		1268		1261		1254	
1308±		1303±		1296		1288		1281		1274		1267		1260	
1314±		1309±		1302		1294		1287		1280		1273		1266	
1320±		1315±		1308		1300		1293		1286		1279		1272	
1326±		1321±		1314		1306		1299		1292		1285		1278	
1332±		1327±		1320		1312		1305		1298		1291		1284	
1338±		1333±		1326		1318		1311		1304		1297		1290	
1344±		1339±		1332		1324		1317		1310		1303		1296	
1350±		1345±		1338		1330		1323		1316		1309		1302	
1356±		1351±		1344		1336		1329		1322		1315		1308	
1362±		1357±		1350		1342		1335		1328		1321		1314	
1368±		1363±		1356		1348		1341		1334		1327		1320	
1374±		1369±		1362		1354		1347		1340		1333		1326	
1380±		1375±		1368		1360		1353		1346		1339		1332	
1386±		1381±		1374		1366		1359		1352		1345		1338	
1392±		1387±		1380		1372		1365		1358		1351		1344	
1398±		1393±		1386		1378		1371		1364		1357		1350	
1404±		1399±		1392		1384		1377		1370		1363		1356	
1410±		1405±		1398		1390		1383		1376		1369		1362	
1416±		1411±		1404		1396		1389		1382		1375		1368	
1422±		1417±		1410		1402		1395		1388		1381		1374	
1428±		1423±		1416		1408		1401		1394		1387		1380	
1434±		1429±		1422		1414		1407		1400		1393		1386	
1440±		1435±		1428		1420		1413		1406		1399		1392	
1446±		1441±		1434		1426		1419		1412		1405		1398	
1452±		1447±		1440		1432		1425		1418		1411		1404	
1458±		1453±		1446		1438		1431		1424		1417		1410	
1464±		1459±		1452		1444		1437		1430		1423		1416	
1470±		1465±		1458		1450		1443		1436		1429		1422	
1476±		1471±		1464		1456		1449		1442		1435		1428	
1482±		1477±		1470		1462		1455		1448		1441		1434	
1488±		1483±		1476		1468		1461		1454		1447		1440	
1494±		1489±		1482		1474		1467		1460		1453		1446	
1500±		1495±		1488		1480		1473		1466		1459		1452	
1506±		1501±		1494		1486		1479		1472		1465		1458	
1512±		1507±		1500		1492		1485		1478		1471		1464	
1518±		1513±		1506		1498		1491		1484		1477		1470	
1524±		1519±		1512		1504		1497		1490		1483		1476	
1530±		1525±		1518		1510		1503		1496		1489		1482	
1536±		1531±		1524		1516		1509		1502		1495		1488	
1542±		1537±		1530		1522		1515		1508		1501		1494	
1548±		1543±		1536		1528		1521		1514		1507		1500	
1554±		1549±		1542		1534		1527		1520		1513		1506	
1560±		1555±		1548		1540		1533		1526		1519		1512	
1566±		1561±		1554		1546		1539		1532		1525		1518	
1572±		1567±		1560		1552		1545		1538		1531		1524	
1578±		1573±		1566		1558		1551		1544		1537		1530	
1584±		1579±		1572		1564		1557		1550		1543		1536	
1590±		1585±		1578		1570		1563		1556		1549		1542	
1596±		1591±		1584		1576		1569		1562		1555		1548	
1602±		1597±		1590		1582		1575		1568		1561		1554	
1608±		1603±		1596		1588		1581		1574		1567		1560	
1614±		1609±		1602		1594		1587		1580		1573		1566	
1620±		1615±		1608		1600		1593		1586		1579		1572	
1626±		1621±		1614		1606		1599		1592		1585		1578	
1632±		1627±		1620		1612		1605		1598		1591		1584	
1638±		1633±		1626		1618		1611		1604		1597		1590	
1644±		1639±		1632		1624		1617		1610		1603		1596	
1650±		1645±		1638		1630		1623		1616		1609		1602	
1656±		1651±		1644		1636		1629		1622		1615		1608	
1662±		1657±		1650		1642		1635		1628		1621		1614	
1668±		1663±		1656		1648		1641		1634		1627		1620	
1674±		1669±		1662		1654		1647		1640		1633		1626	
1680±		1675±		1668		1660		1653		1646		1639		1632	
1686±		1681±		1674		1666		1659		1652		1645		1638	
1692±		1687±		1680		1672		1665		1658		1651		1644	
1698±		1693±		1686		1678		1671		1664		1657		1650	
1704±		1699±		1692		1684		1677		1670		1663		1656	
1710±		1705±		1698		1690		1683		1676		1669		1662	
1716±		1711±		1704		1696		1689		1682		1675		1668	
1722±		1717±		1710		1702		1695		1688		1681		1674	
1728±		1723±		1716		1708		1701		1694		1687		1680	
1734±		1729±		1722		1714		1707		1700		1693		1686	
1740±		1735±		1728		1720		1713		1706		1699		1692	
1746±		1741±		1734		1726		1719		1712		1705		1698	
1752±		1747±		1740		1732		1725		1718		1711		1704	
1758±		1753±		1746		1738		1731		1724		1717		1710	
1764±		1759±		1752		1744		1737		1730		1723		1716	
1770±		1765±		1758		1750		1743		1736		1729		1722	
1776±		1771±		1764		1756		1749		1742		1735		1728	
1782±		1777±		1770		1762		1755		1748		1741		1734	
1788±		1783±		1776		1768		1761		1754		1747		1740	
1794±		1789±		1782		1774		1767		1760		1753		1746	
1800±		1795±		1788		1780		1773		1766		1759		1752	
1806±		1801±		1794		1786		1779		1772		1765		1758	
1812±		1807±		1800		1792		1785		1778		1771		1764	
1818±		1813±		1806		1798		1791		1784		1777		1770	
1824±		1819±		1812		1804		1797		1790		1783		1776	
1830±		1825±		1818		1810		1803		1796		1789		1782	
1836±		1831±		1824		1816		1809		1802		1795		1788	
1842±		1837±		1830		1822		1815		1808		1801		1794	
1848±		1843±		1836		1828		1821		1814		1807		1800	
1854±		1849±		1842		1834		1827		1820		1813		1806	
1860±		1855±		1848		1840		1833		1826		1819		1812	
1866±		1861±		1854		1846		1839		1832		1825		1818	
1872±		1867±		1860		1852		1845		1838		1831		1824	
1878±		1873±		1866		1858		1851		1844		1837		1830	
1884±		1879±		1872		1864		1857		1850		1843		1836	
1890±		1885±		1878		1870		1863		1856		1849		1842	
1896±		1891±		1884		1876		1869		1862		1855		1848	
1902±		1897±		1890		1882		1875		1868		1861		1854	
1908±		1903±		1896		1888		1881		1874		1867		1860	
1914±		1909±		1902		1894		1887		1880		1873		1866	
1920±		1915±		1908		1900		1893		1886		1879		1872	
1926±		1921±		1914		1906		1899		1892		1885		1878	
1932±		1927±		1920		1912		1905		1898		1891		1884	
1938±		1933±		1926		1918		1911		1904		1897		1890	
1944±		1939±		1932		1924		1917		1910		1903		1896	
1950±		1945±		1938</											