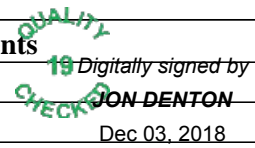
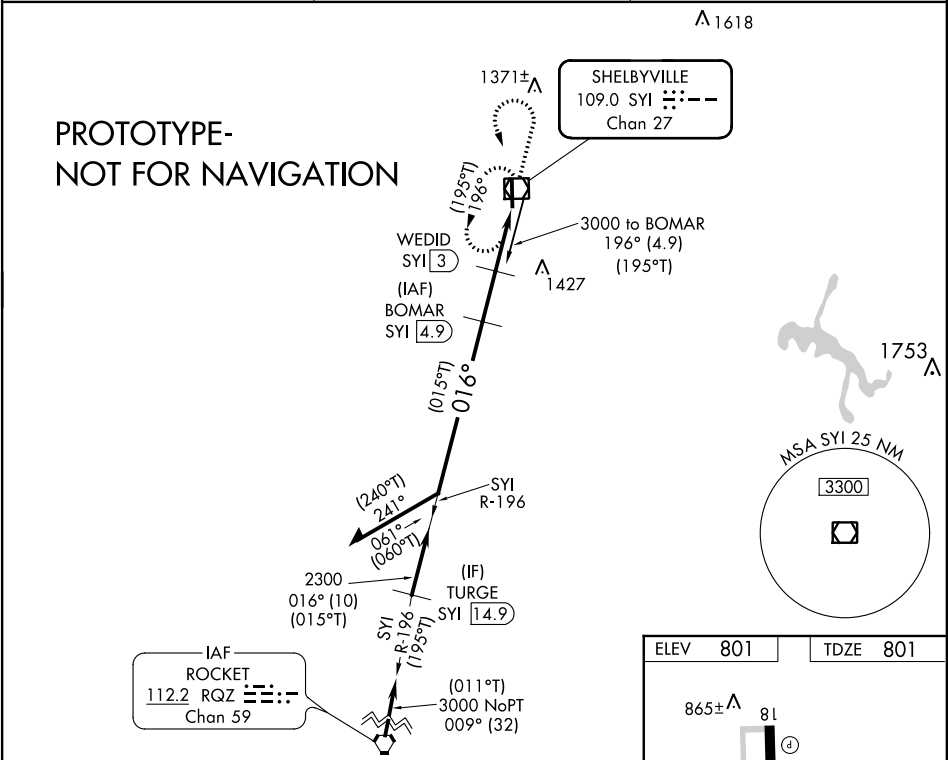


Flight Procedure Tracking Form		Action: FLIGHT CHECK	Task Type: IAP	Date Open: 06/13/2018	Task #: 2018061326713801001	Request #: 20180613267138
Procedure: VOR RWY 36 AMDT 17			Airport ID: KSYI	Airport: BOMAR FIELD-SHELBYVILLE MUNI		Reimbursable #: NO
City: SHELBYVILLE	ST: TN	GPS #:	Estimated Chart Date: 02/28/2019		FICO #:	
Fac ID: SYI		Fac. Type: VOR_DME			Specialist: ROBERT COOK	
Procedure Review						
	Rec'd	Rel'd	Full Name	Comments		
Lead:	08/15/2018					
QA:						
Liaison:						
Procedure Comments:			Remark Type: INFORMATION			
CONTACT DON LANIER, AJV-5431, 405-954-8284,DONALD.H.LANIER@FAA.GOV						

VOR/DME SYI	APP CRS	Rwy Idg	5503
109.0	016°	TDZE	801
Chan 27		Apt Elev	801

VOR RWY 36
BOMAR FIELD-SHELBYVILLE MUNI (SYI)

DME required. When local altimeter setting not received, use Tullahoma altimeter setting and increase all MDAs 80 feet, and S-36 Cat C/D visibility ¼ SM. VDP NA when using Tullahoma altimeter setting.		MISSED APPROACH: Climb to 2000 then climbing left turn to 3000 direct SYI VOR/DME and hold.
AWOS-3 119.275	MEMPHIS CENTER 128.15 323.125	UNICOM 122.8 (CTAF) 0



VGSI and descent angles not coincident (VGSI Angle 3.00/TCH 30). Remain within 10 NM				
BOMAR SYI [4.9]				
WEDID SYI [3]				
SYI [1.9]				
SYI [0.6]				
3000				
2300				
1600				
1.8 NM				
1.2				
1.2				
CATEGORY	A	B	C	D
S-36	1220-1	419 (500-1)	1220-1½	419 (500-1½)
CIRCLING	1260-1 459 (500-1)	1420-1 619 (700-1)	1780-3	979 (1000-3)

ELEV 801	TDZE 801
865±	
857	
855±	
016° 4.2 NM from FAF	
MIRL Rwy 18-36	
REIL Rwy 18 and 36	
FAF to MAP 4.2 NM	
Knots	60 90 120 150 180
Min:Sec	4:12 2:48 2:06 1:41 1:24

VOR/DME SYI 109.0 Chan 27	APP CRS 016°	Rwy Idg 5503 TDZE 801 Apt Elev 801
---	------------------------	---

VOR RWY 36
BOMAR FIELD-SHELBYVILLE MUNI (SYT)

T When local altimeter setting not received, use Tullahoma altimeter setting and increase all MDA 80 feet, S-36 Cat D visibility $\frac{1}{4}$, and Circling Cat C and D visibility $\frac{1}{4}$. VDP NA when using Tullahoma altimeter setting. ADF or DME required.

MISSED APPROACH: Climb to 2000 then climbing left turn to 3000 direct SYLVOR/DME and hold.

AWOS-3
119.275

MEMPHIS CENTER
128.15 323.125

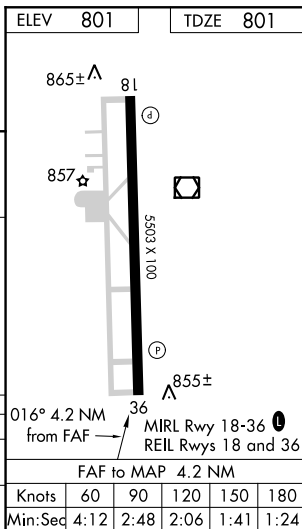
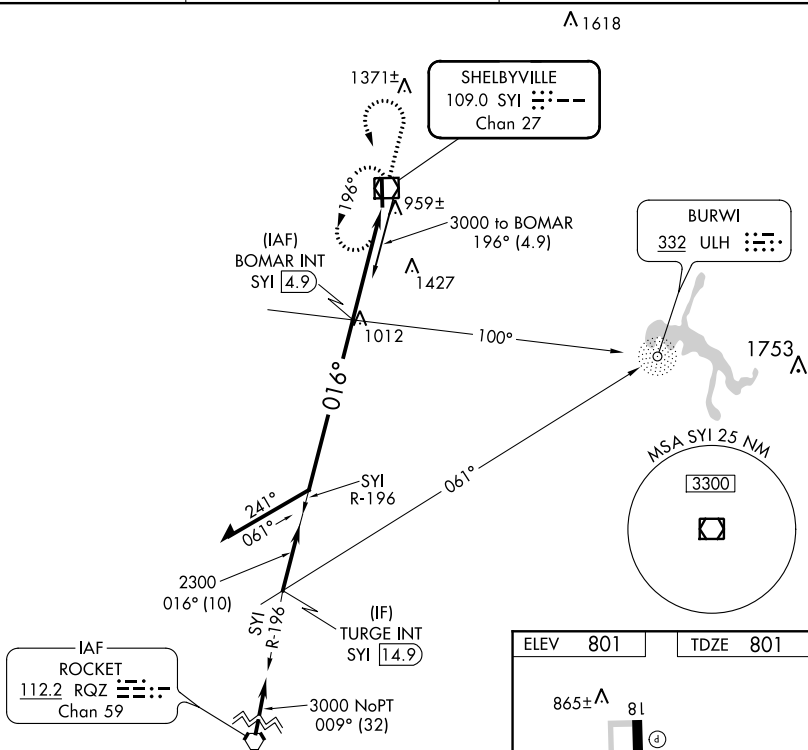
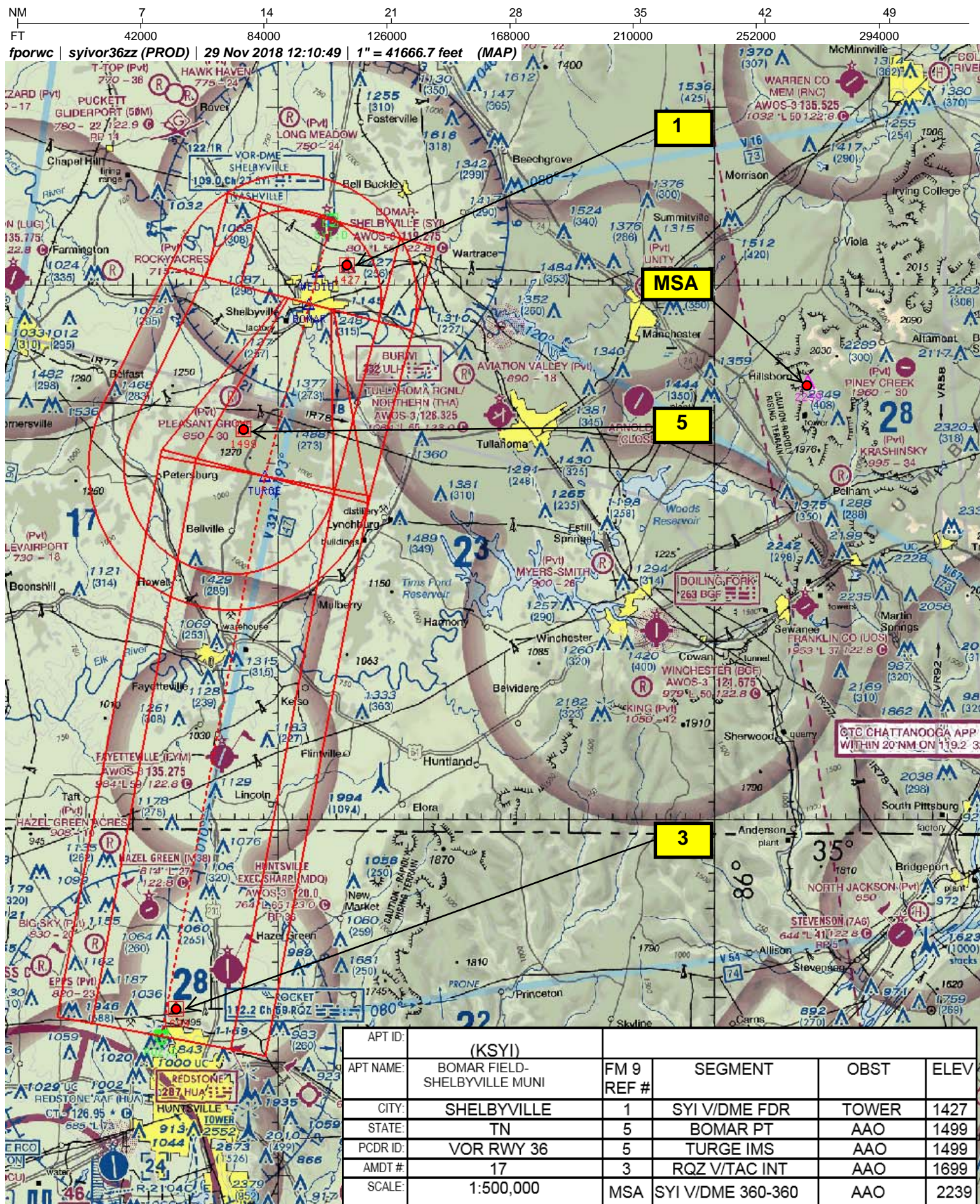
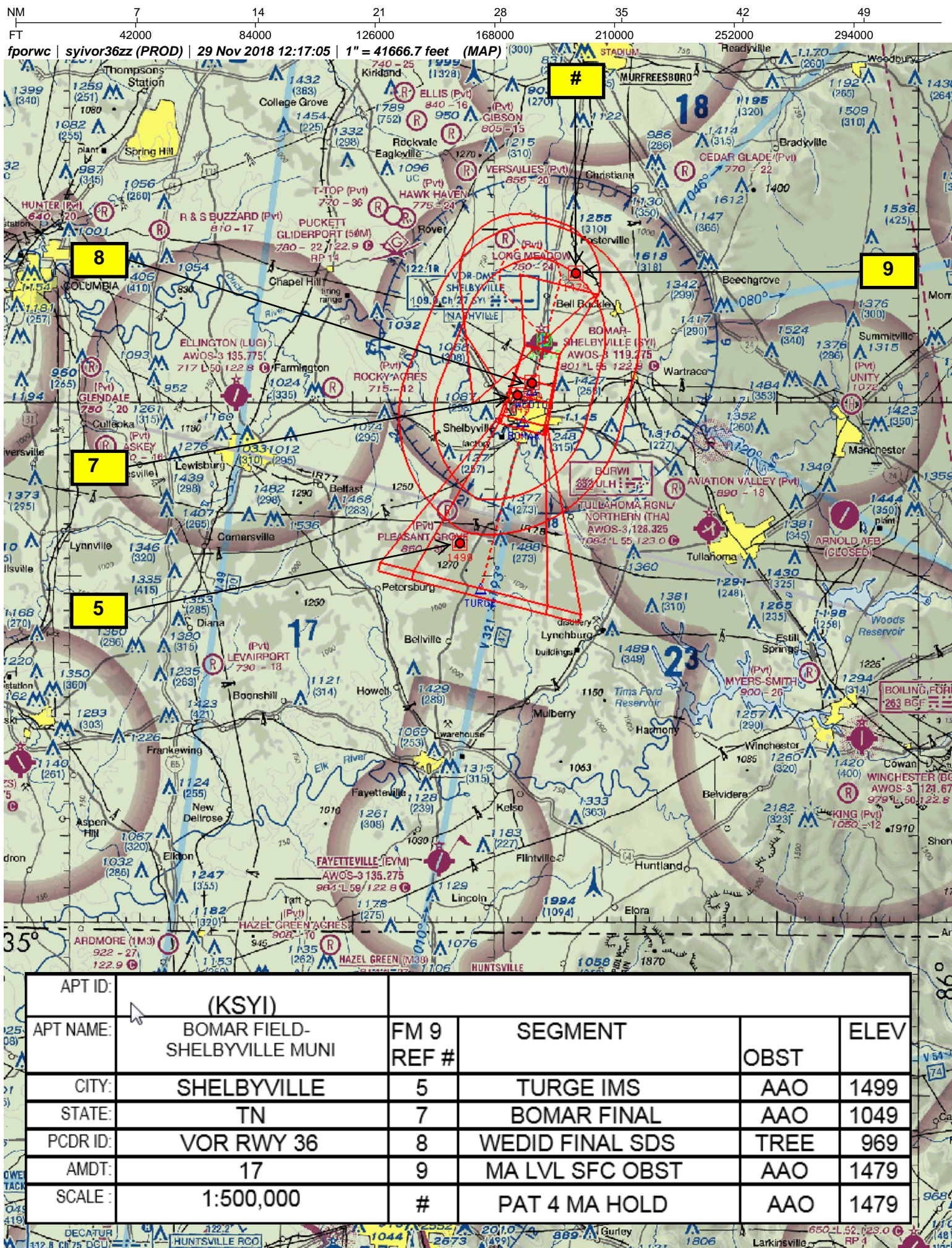
UNICOM
122.8 (CTAF) **L**

Diagram illustrating a 3000m depth sounder trace. The trace shows a bottom return at 2300m and a BOMAR INT SYI at 4.9. The diagram includes a depth scale from 0 to 3000m, a 3.26° beam angle, a 3 NM range, and a 1.2m depth difference. A table below the diagram categorizes the data into S-36 and CIRCLING groups.

CATEGORY	A	B	C	D
S-36	1220-1	419 (500-1)	1220-1¼	419 (500-1¼)
CIRCLING	1260-1 459 (500-1)	1420-1 619 (700-1)	1420-1¾ 619 (700-1¾)	1440-2 639 (700-2)





NM 1 2 3 4 5 6 7 8 9 10
FT 8000 16000 24000 32000 40000 48000 56000 64000

fporwc | syivor36zz (PROD) | 29 Nov 2018 12:21:54 | 1" = 8333.3 feet (MAP)

