


Flight Procedure Tracking Form		Action: AMENDMENT	Task Type: IAP	Date Open: 05/14/2018	Task #: 2018051428380201002	Request #: 20180514283802	
Procedure: APPROACH RNAV (GPS) RWY 31 AMDT 1B			Airport ID: KMIW	Airport: MARSHALLTOWN MUNI		Reimbursable #: NO	
City: MARSHALLTOWN	ST: IA	GPS #:	Estimated Chart Date: 02/28/2019		FICO #:		
Fac ID: N/A		Fac. Type:		Specialist: DAVID DOWLING			
Procedure Review							
	Rec'd	Rel'd	Full Name	Comments			
Lead:	09/11/2018						
QA:							CWS 10/10/2018
Liaison:							
Procedure Comments: ENROUTE-NON Remark Type: INFORMATION FLIGHT INSPECTION REVIEW NOT REQUIRED - PROCESSED IAW AIRCRAFT OPERATIONS GROUP (AJW-33) MEMO, DEC 22, 2017. MANAGER CONTACTS: ROBERT HAMILTON, AJV-5422, (405) 954-4608; JULIE MORGAN, AJV-542, (405) 954-8568. AIS PUB DAY ACTION: CANCEL 8/4934.							

NEW

MARSHALLTOWN, IOWA

AL-5423 (FAA)

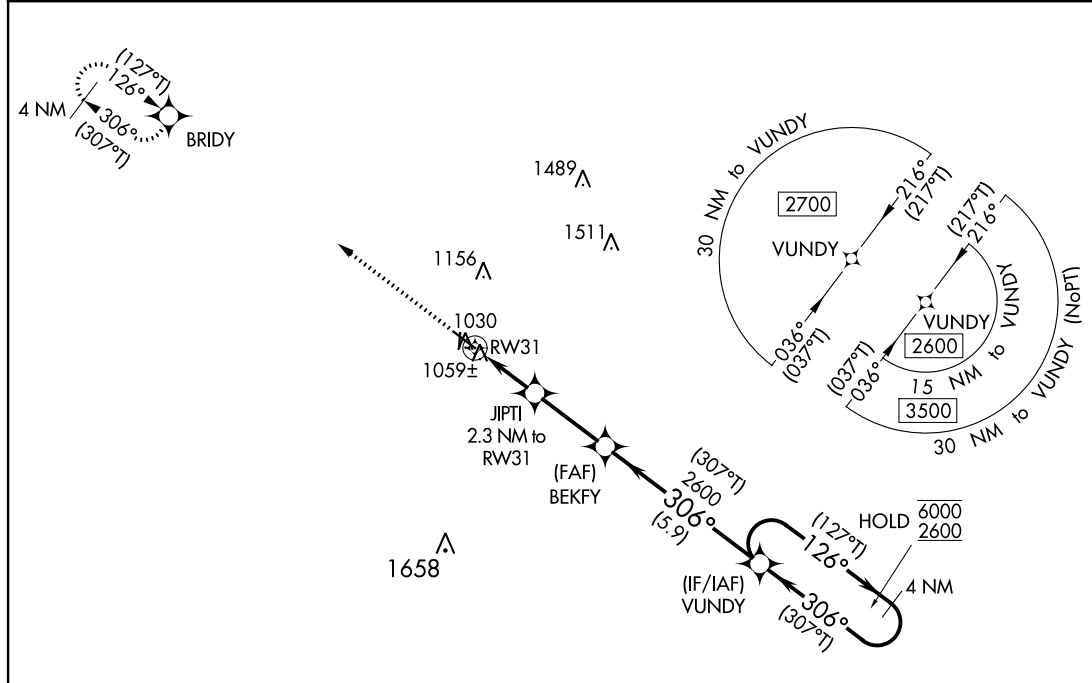
FIG

WAAS CH 48936 W31A	APP CRS 306°	Rwy Idg TDZE Apt Elev	5007 973 975
--	------------------------	-----------------------------	---

RNAV (GPS) RWY 31

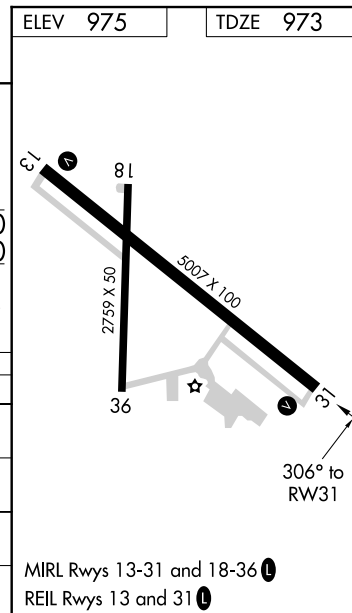
MARSHALLTOWN MUNI (MIW)

RNP APCH.			
<p>Baro-VNAV and VDP NA with Grinnell altimeter setting. Rwy 31 Helicopter visibility reduction below $\frac{3}{4}$ SM NA. For uncompensated Baro-VNAV systems, LNAV/VNAV NA below -22°C or above 54°C. When local altimeter setting not received, use Grinnell altimeter setting and increase all DA 64 feet and all MDA 80 feet; increase LPV and LNAV/VNAV all Cats visibility $\frac{1}{8}$ SM and LNAV Cats C/D and Circling Cat D visibility $\frac{1}{4}$ SM. Circling Rwy 18,36 NA at night.</p>			<p>MISSED APPROACH: Climb to 2700 direct BRIDY and hold.</p>
ASOS 128.325	WATERLOO APP CON ★ 120.9	CLNC DEL 120.9	UNICOM 122.8 (CTAF) 1



PROTOTYPE: NOT FOR NAVIGATION

2700	BRIDY	BEKFY	VUNDY	4 NM Holding Pattern
*LNAV only	JIPTI 2.3 NM to RW31	2600	(307°T) 126° 6000	(127°T) 126° 2600
1 NM to RW31	RW31	1740	306° 2600	306° (307°T) 2600
GP 3.00°				TCH 37
1 NM	1.3 NM	2.7 NM	5.9 NM	
CATEGORY	A	B	C	D
LPV DA		1223-1	250 (300-1)	
LNAV/VNAV DA		1223-1	250 (300-1)	
LNAV MDA		1320-1	347 (400-1)	
C CIRCLING	1400-1 425 (500-1)	1440-1 465 (500-1)	1460-1½ 485 (500-1½)	1840-2¾ 865 (900-2¾)



AUTOMATED AL-5423 RNAV (GPS) RWY 31

NC-3
5 OCT 2018
COMPILER: CG
REVIEWER:
DBL CHKR:
EFF DATE: FIG

MARSHALLTOWN, IOWA

Amdt 1B FIG

42°07'N-92°55'W

MARSHALLTOWN MUNI (MIW)
RNAV (GPS) RWY 31

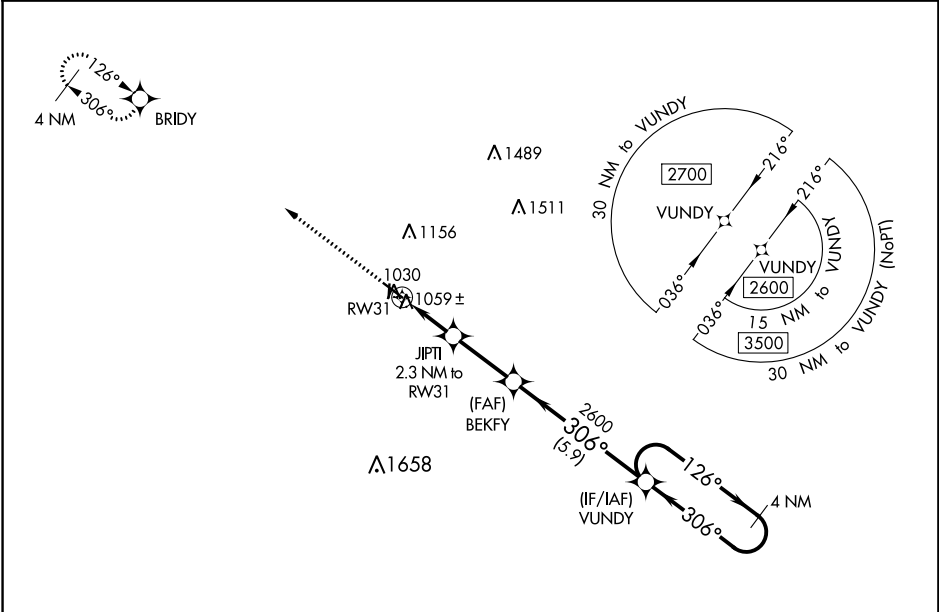
WAAS CH 48936 W31A	APP CRS 306°	Rwy Idg TDZE 973 Apt Elev 975
--	------------------------	---

OLD

RNAV (GPS) RWY 31
MARSHALLTOWN MUNI (MIW)

<p>▼ For uncompensated Baro-VNAV systems, LNAV/VNAV NA below -22°C (-7°F) or above 54°C (130°F). DME/DME RNP-0.3 NA. Baro-VNAV and VDP NA with Grinnell altimeter setting. When local altimeter setting not received, use Grinnell altimeter setting and increase all DA 64 feet and all MDA 80 feet; increase LPV and LNAV/VNAV all Cats visibility 1/8 mile and LNAV Cats C/D and Circling Cat D visibility 1/4 mile. Helicopter visibility reduction below 3/4 SM NA.</p>	MISSED APPROACH: Climb to 2700 direct BRIDY and hold.
--	--

ASOS 128.325	WATERLOO APP CON ★ 120.9	CLNC DEL 120.9	UNICOM 122.8 (CTAF) 0
------------------------	------------------------------------	--------------------------	---------------------------------



2700 BRIDY					
*LNAV only					
*1 NM to RW31					
RW31					
-1 NM-1.3 NM-2.7 NM-5.9 NM-					
CATEGORY	A	B	C	D	
LPV DA	1223-1		250 (300-1)		
LNAV/ VNAV DA	1223-1		250 (300-1)		
LNAV MDA	1320-1		347 (400-1)		
CIRCLING	1400-1 425 (500-1)	1440-1 465 (500-1)	1460-1½ 485 (500-1½)	1840-2¾ 865 (900-2¾)	

