
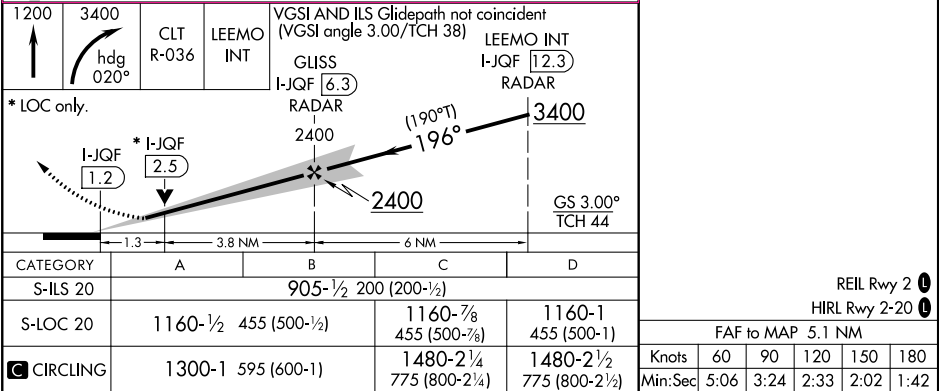
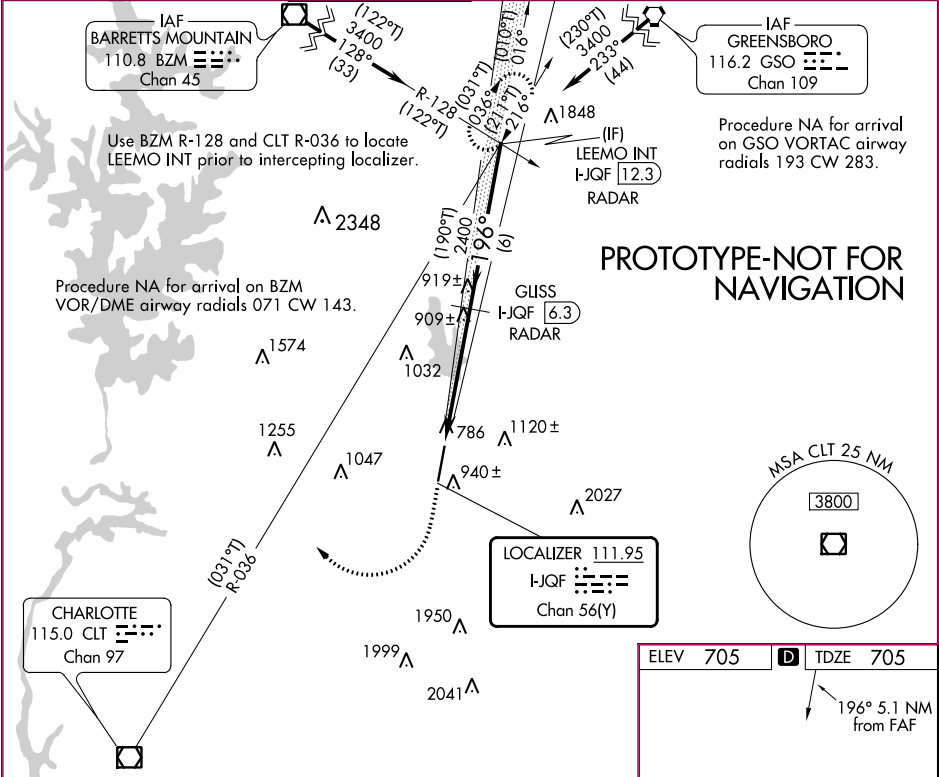


|   |               |                             |   |   |                                       |                                     |
|---|---------------|-----------------------------|---|---|---------------------------------------|-------------------------------------|
| <b>Flight Procedure Tracking Form</b>   |               | <b>Action:</b><br>AMENDMENT | <b>Task Type:</b><br>IAP                | <b>Date Open:</b><br>05/01/2018   | <b>Task #:</b><br>2018050128672103001 | <b>Request #:</b><br>20180501286721 |
| <b>Procedure:</b> ILS OR LOC RWY 20 AMDT 2A   |               |                             | <b>Airport ID:</b><br>KJQF              | <b>Airport:</b><br>CONCORD-PADGETT RGNL   |                                       | <b>Reimbursable #:</b><br>NO        |
| <b>City:</b> CONCORD  | <b>ST:</b> NC | <b>GPS #:</b>               | <b>Estimated Chart Date:</b> 01/03/2019 |   | <b>FICO #:</b>                        |                                     |
| <b>Fac ID:</b> JQF  |               | <b>Fac. Type:</b> ILS       |   |   | <b>Specialist:</b> PETER GUIMOND      |                                     |
| <b>Procedure Review</b>   |               |                             |   |   |                                       |                                     |
|   | <b>Rec'd</b>  | <b>Rel'd</b>                | <b>Full Name</b>                        | <b>Comments</b>   |                                       |                                     |
| <b>Lead:</b>  | 05/18/2018    |                             |   |  |                                       |                                     |
| <b>QA:</b>  |               |                             |   |   |                                       |                                     |
| <b>Liaison:</b>   |               |                             |   |   |                                       |                                     |
| <b>Procedure Comments:</b> ENROUTE-NON <b>Remark Type:</b> INFORMATION<br><br>PENDING DATA USED.<br><br>PROCESSED IAW AIRCRAFT OPERATIONS GROUP (AJW-33) MEMO, DECEMBER 22, 2017, SUBJECT: FLIGHT INSPECTION NOT REQUIRED.<br><br>CONTACT: ROBERT HAMILTON, AJV-5422 LEAD, 405.954.4608 |               |                             |   |   |                                       |                                     |

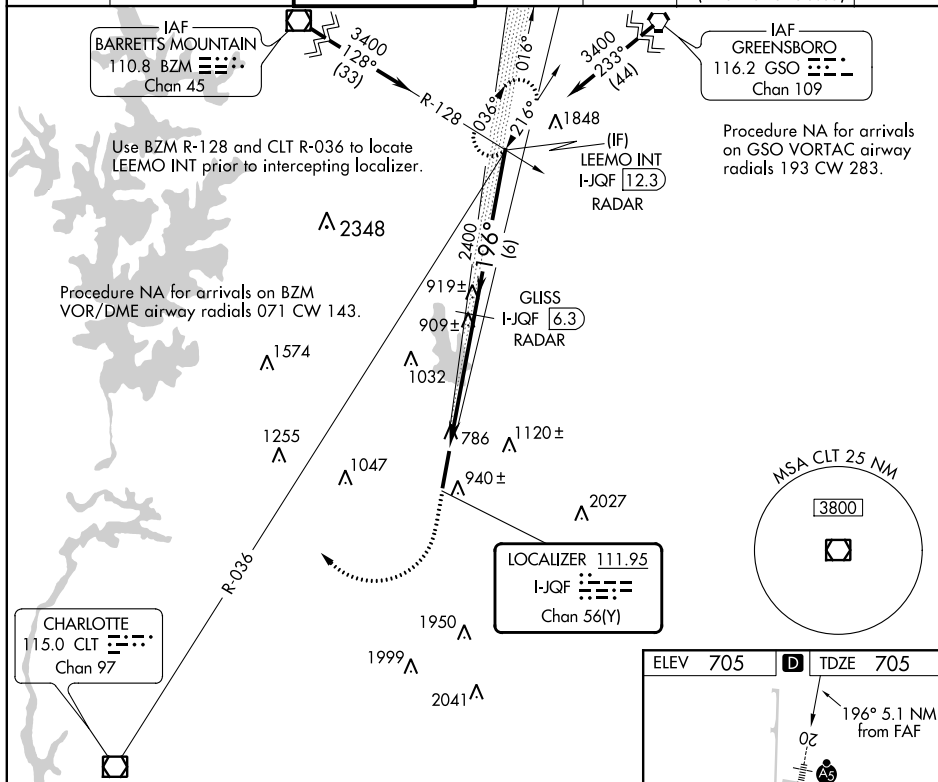
|                            |   |                 |   |          |                               |        |
|----------------------------|---|-----------------|---|----------|-------------------------------|--------|
| DME or RADAR for LOC only. |   | MALSR           | MISSED APPROACH: Climb to 1200 then climbing right turn to 3400 on heading 020° and CLT VOR/DME R-036 to LEEMO INT/I-JQF 12.3 DME RADAR and hold. |          |                               |        |
| NA                         | For inop ALS, increase S-LOC 20 CAT D visibility to 1 3⁄8 SM. |                 |   |          |                               |        |
| D-ATIS                     | CHARLOTTE APP CON   | CONCORD TOWER ★ | GND CON   | CLNC DEL | CHARLOTTE CLNC DEL            | UNICOM |
| 133.675                    | 128.32 307.8  | 134.65 (CTAF) 0 | 121.85  | 118.55   | 127.25<br>(when tower closed) | 122.95 |



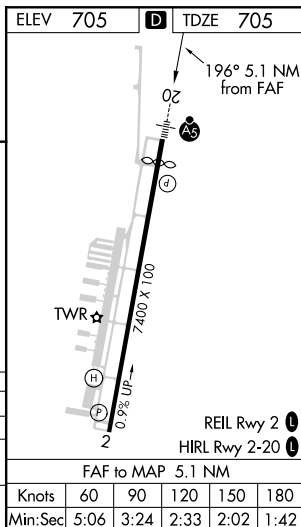
ILS or LOC RWY 20  
CONCORD RGNL (JQF)

- |                                 |   |  |
|---------------------------------|---|--|
| <p><b>T</b></p> <p><b>A</b></p> | <p>If local altimeter setting not received, use Charlotte altimeter setting and increase all DA/MDAs 60 feet. VDP NA when using Charlotte altimeter setting. RADAR or DME required.</p> | <p><b>MALSR</b></p>  <p><b>MISSED APPROACH:</b> Climb to 1200 then climbing right turn to 3400 via heading 020° and CLT R-036 to LEEMO INT/1-JQF 12.3 DME and hold.</p> |
|---------------------------------|---|--|

|                          |  |  |                          |                           |  |                         |
|--------------------------|--|--|--------------------------|---------------------------|--|-------------------------|
| D-ATIS<br><b>133.675</b> | CHARLOTTE APP CON<br><b>128.32 307.8</b> | CONCORD TOWER ★<br><b>134.65</b> (CTAF) <b>0</b> | GND CON<br><b>121.85</b> | CLNC DEL<br><b>118.55</b> | CHARLOTTE CLNC DEL<br><b>127.25</b><br>(when tower closed) | UNICOM<br><b>122.95</b> |
|--------------------------|--|--|--------------------------|---------------------------|--|-------------------------|



|           |                       |               |                               |                                    |   |
|-----------|-----------------------|---------------|-------------------------------|------------------------------------|---|
| 1200<br>↑ | 3400<br>hdg<br>020°   | CLT<br>R-036  | LEEMO INT                     | GLISS<br>I-JQF <u>6.3</u><br>RADAR | LEEMO INT<br>I-JQF <u>12.3</u><br>RADAR |
|           |                       |               |                               |                                    |   |
| CATEGORY  | A                     | B             | C                             | D                                  |   |
| S-ILS 20  | 905-1/2 200 (200-1/2) |               |                               |                                    |   |
| S-LOC 20  | 1160-1/2              | 455 (500-1/2) | 1160-3/4<br>455 (500-3/4)     | 1160-1<br>455 (500-1)              |   |
| CIRCLING  | 1300-1                | 595 (600-1)   | 1300-1 1/2<br>595 (600-1 1/2) | 1480-2 1/2<br>775 (800-2 1/2)      |   |





NM 1 2 3 4 5 6 7 8 9 10 11 12 13 14

FT 8000 16000 24000 32000 40000 48000 56000 64000 72000 80000

fpoprg | jqf\_ils20 (PROD) | 26 Jul 2018 12:54:06 | 1" = 8333.3 feet (MAP)

Airport ID KJQF  
Apt Name Concord-Padgett Rgnl  
City Concord  
State NC  
Proc ID ILS or LOC Rwy 20  
Amdt 2A  
Scale 1:100,000

Circling

#10  
Cats C/D Circling  
1120 Tower

#9  
Cat A/B Circling  
940 Tower

