
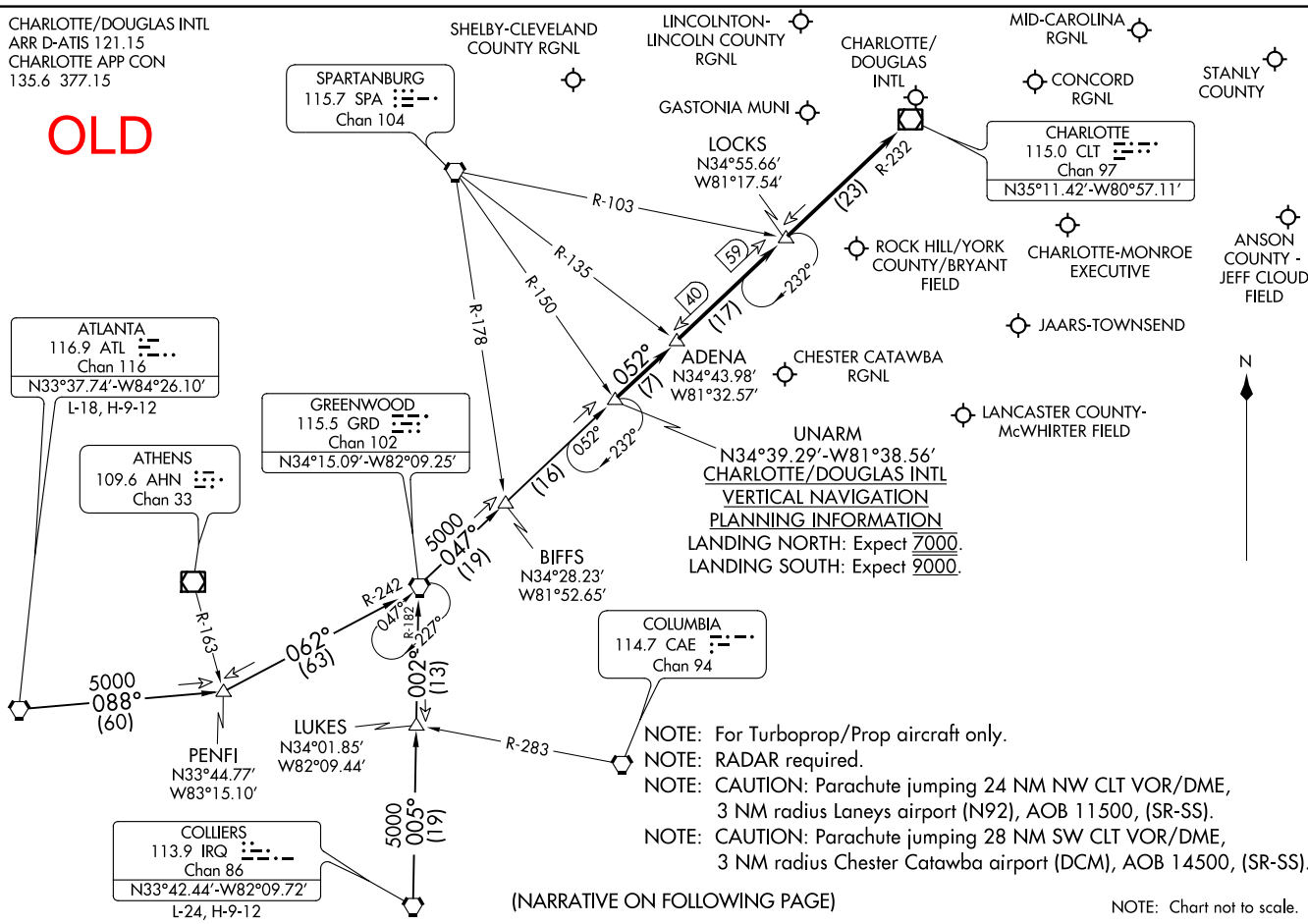


| | | | | | | |
|---|---------------|-----------------------------|---|---|---------------------------------------|-------------------------------------|
| Flight Procedure Tracking Form | | Action: AMENDMENT | Task Type: STAR | Date Open: 05/01/2018 | Task #: 2018050128672102004 | Request #: 20180501286721 |
| Procedure: STAR UNARM SIX CONCORD NC KJQF | | | Airport ID: KJQF | Airport: CONCORD-PADGETT RGNL | | Reimbursable #: NO |
| City: CONCORD | ST: NC | GPS #: | Estimated Chart Date: 01/03/2019 | | FICO #: | |
| Fac ID: N/A | | Fac. Type: | | Specialist: PETER GUIMOND | | |
| Procedure Review | | | | | | |
| | Rec'd | Rel'd | Full Name | Comments | | |
| Lead: | 05/18/2018 | | |  | | |
| QA: | | | | | | |
| Liaison: | | | | | | |
| Procedure Comments: | | | ENROUTE | Remark Type: INFORMATION | | |
| <p>PROCESSED IAW AIRCRAFT OPERATIONS GROUP (AJW-33) MEMO, DECEMBER 22, 2017, SUBJECT: FLIGHT INSPECTION NOT REQUIRED. CONTACT: ROBERT HAMILTON, AJV-5422 LEAD, 405.954.4608</p> <p>10/16/2018: CORRECTED COPY TO UPDATE TURBOJET AND VERTICAL PLANNING NOTES.</p> | | | | | | |



OLD

ARRIVAL ROUTE DESCRIPTION

ATLANTA TRANSITION (ATL.UNARM5): From over ATL VORTAC on ATL R-088 to PENFI, then on GRD R-242 to GRD VORTAC, then on GRD R-047 to UNARM INT. Thence

COLLIERS TRANSITION (IRQ.UNARM5): From over IRQ VORTAC on IRQ R-005 to LUKES, then on GRD R-182 to GRD VORTAC, then on GRD R-047 to UNARM INT. Thence

. . . . from UNARM on CLT R-232 to ADENA, then on CLT R-232 to LOCKS, then on CLT R-232 to CLT VOR/DME. Expect RADAR vectors to destination airport or final approach course prior to CTL VOR/DME.

SE-2, 21 JUN 2018 to 19 JUL 2018

SE-2, 21 JUN 2018 to 19 JUL 2018

Proc ID UNARM ARRIVAL
Amdt SIX
Scale 1:500,000

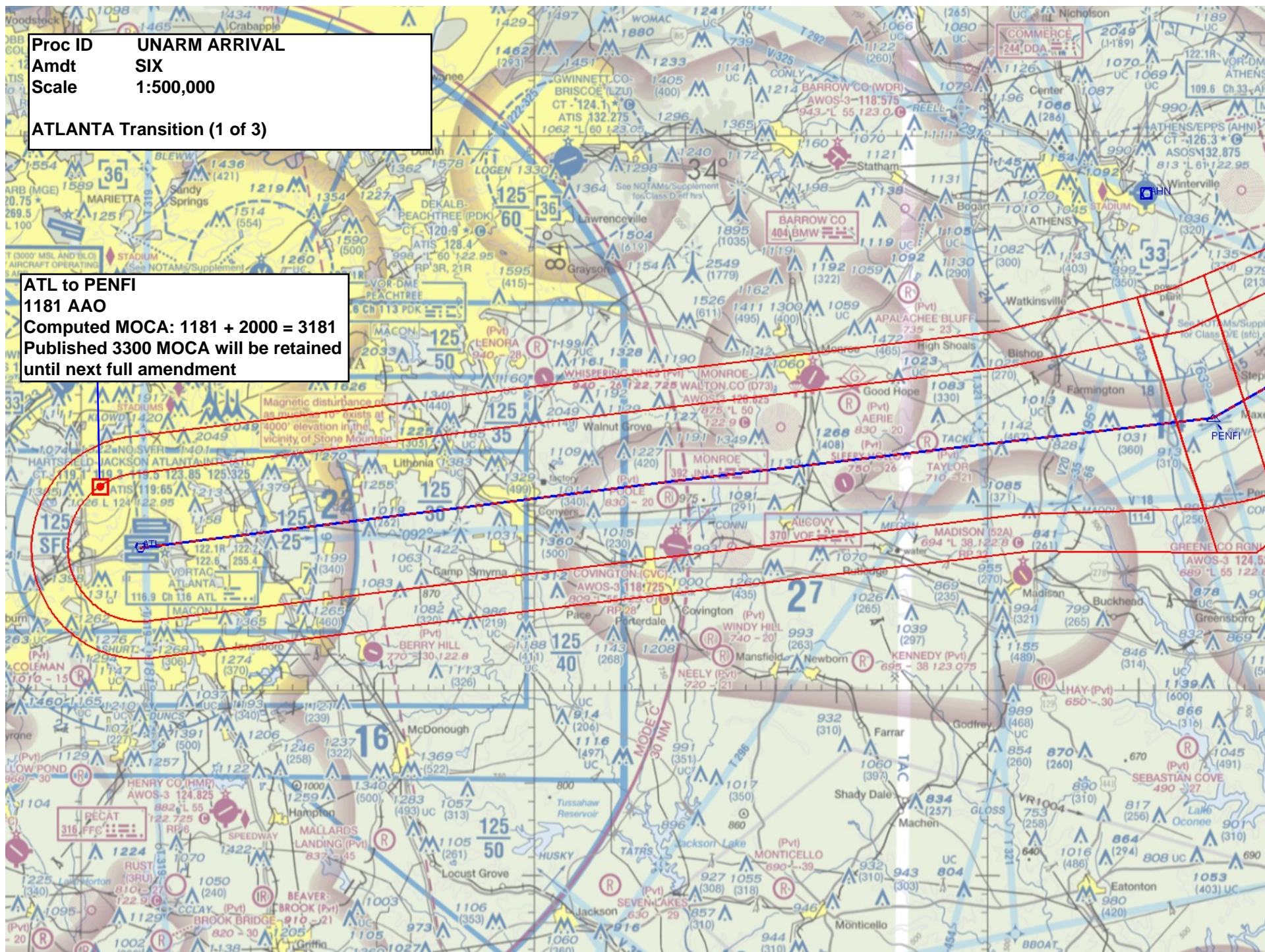
ATLANTA Transition (1 of 3)

ATL to PENFI

1181 AAO

Computed MOCA: $1181 + 2000 = 3181$

Published 3300 MOCA will be retained
until next full amendment



Proc ID UNARM ARRIVAL
Amdt SIX
Scale 1:500,000

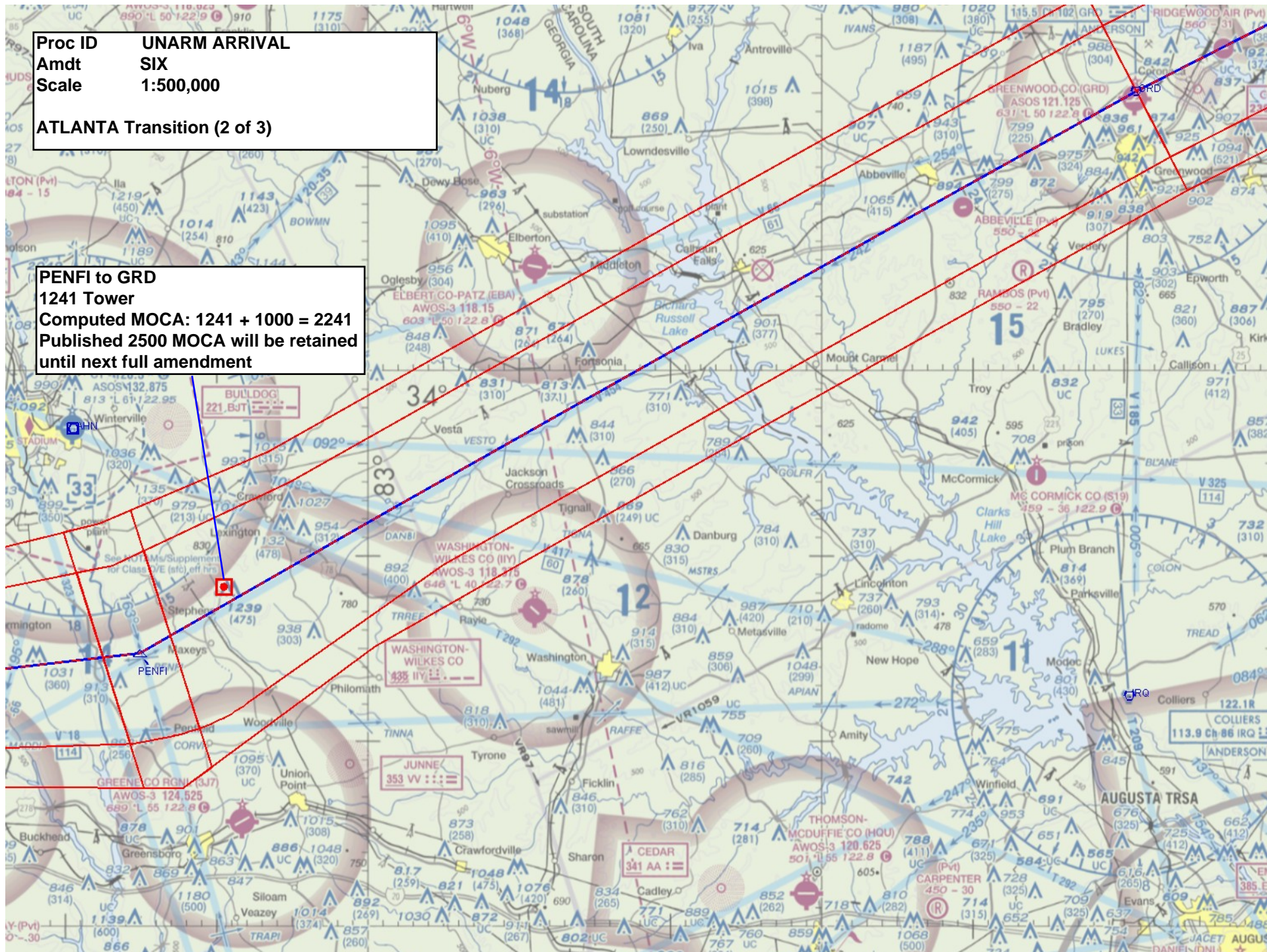
ATLANTA Transition (2 of 3)

PENFI to GRD

1241 Tower

Computed MOCA: $1241 + 1000 = 2241$

Published MOCA will be retained
until next full amendment



Proc ID UNARM ARRIVAL
Amdt SIX
Scale 1:500,000

ATLANTA Transition (3 of 3)

BIFFS to UNARM

1184 Tower

Computed MOCA: $1184 + 1000 = 2184$

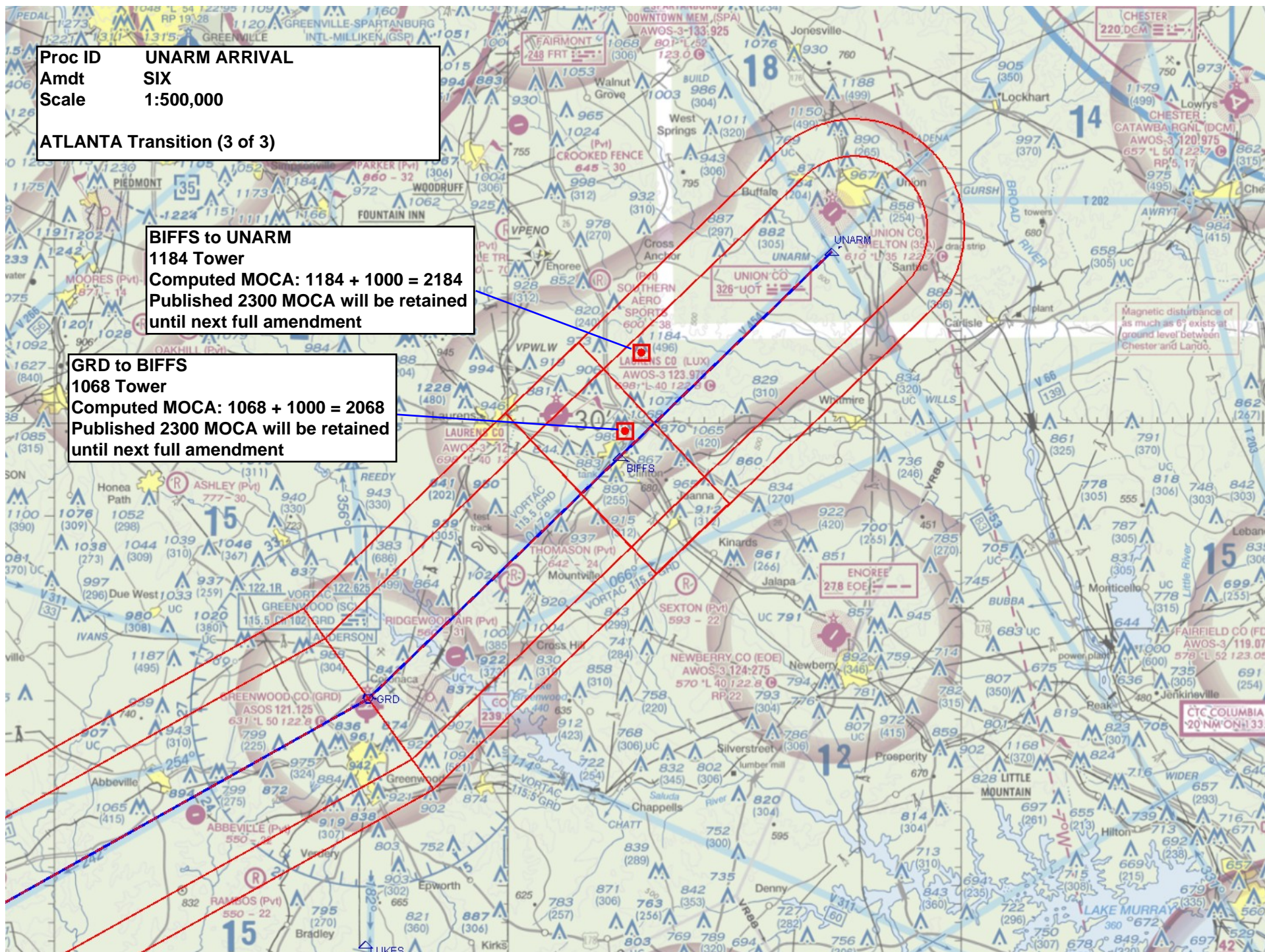
Published 2300 MOCA will be retained
until next full amendment

GRD to BIFFS

1068 Tower

Computed MOCA: $1068 + 1000 = 2068$

Published 2300 MOCA will be retained
until next full amendment



45-020237

Proc ID UNARM ARRIVAL
Amdt SIX
Scale 1:500,000

COLLIERS Transition (1 of 2)

LUKES to GRD

1094 Tower

Computed MOCA: $1094 + 1000 = 2094$

Published 2400 MOCA will be retained
until next full amendment

IRQ to LUKES

845 Tower

Computed MOCA: $845 + 1000 = 1845$

Published 2400 MOCA will be retained
until next full amendment

CTC COLUMBIA APP WITHIN
20 NM ON 124.15 338.2

Proc ID UNARM ARRIVAL
Amdt SIX
Scale 1:500,000

COLLIERS Transition (2 of 2)

BIFFS to UNARM
1184 Tower
Computed MOCA: $1184 + 1000 = 2184$
Published 2300 MOCA will be retained
until next full amendment

GRD to BIFFS
1131 Tower
Computed MOCA: $1131 + 1000 = 2131$
Published 2300 MOCA will be retained
until next full amendment

LUKES to GRD
1094 Tower
Computed MOCA: $1094 + 1000 = 2094$
Published 2400 MOCA will be retained
until next full amendment

Proc ID UNARM ARRIVAL
Amdt SIX
Scale 1:500,000

ATLANTA Transition (3 of 3)

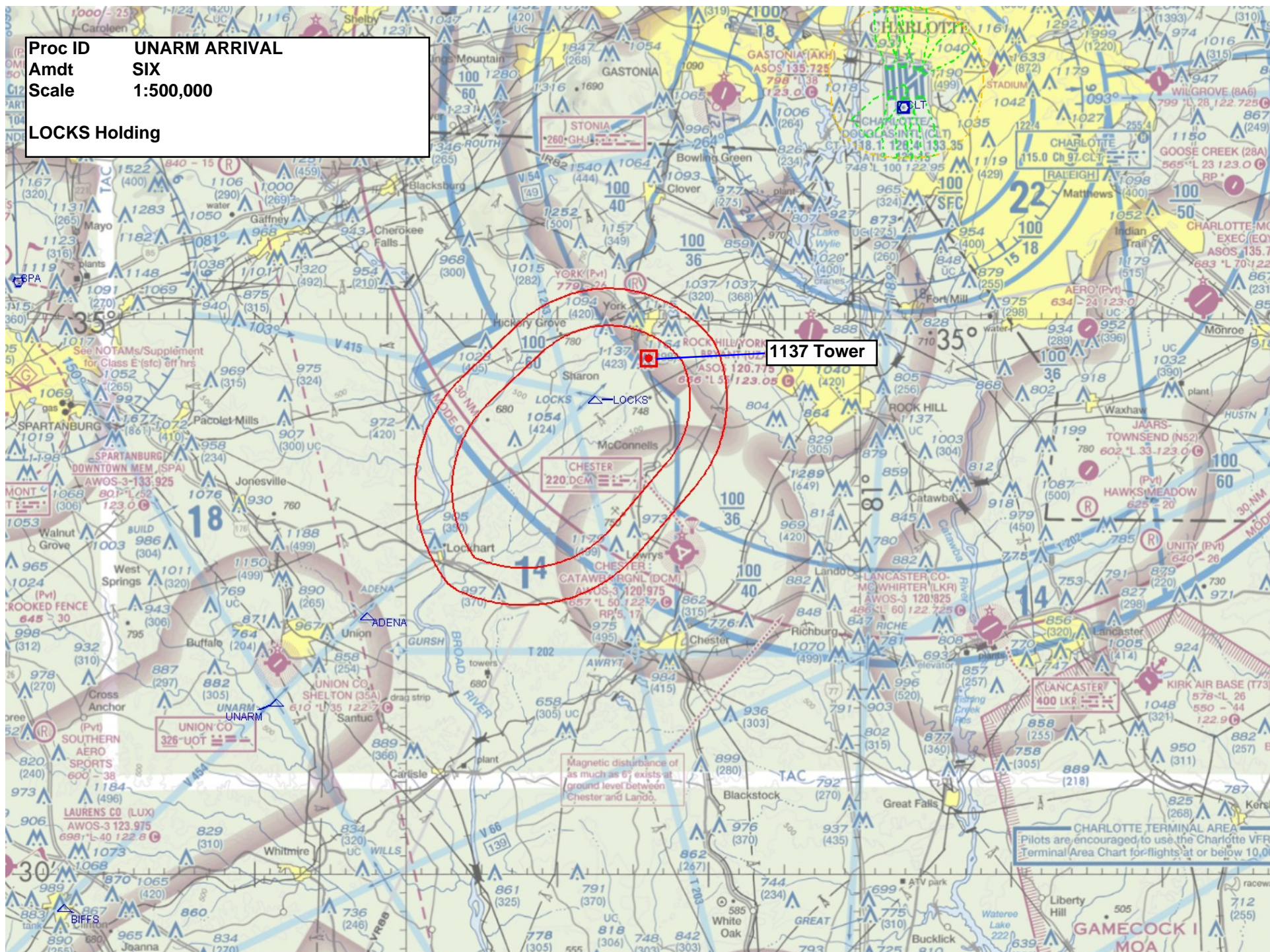
LOCKS to CLT
1190 Tower
Computed MOCA: $1190 + 1000 = 2190$
Published 2700 MOCA will be retained until next full amendment

ADENA to LOCKS
1054 Tower
Computed MOCA: $1054 + 1000 = 2054$
Published 2300 MOCA will be retained until next full amendment

UNARM to ADENA
967 Tower
Computed MOCA: $967 + 1000 = 1967$
Published 2300 MOCA will be retained until next full amendment

CHARLOTTE TERMINAL AREA
Pilots are encouraged to use the Charlotte VFR Terminal Area Chart for flights at or below 10,000'

LOCKS Holding



UNARM Holding

