

FEDERAL AVIATION ADMINISTRATION
FLIGHT STANDARDS SERVICE
STANDARD TERMINAL ARRIVAL (STAR)

Bearings, headings, courses, tracks and radials are magnetic. Elevations and altitudes are in feet, MSL. Altitudes are minimum altitudes unless otherwise indicated.
Distances are in nautical miles (NM). Graphic depictions attached.

Arrival Name	Number	STAR Computer Code	Superseded Number	Dated	Effective Date
ZUUMA (RNAV)	THREE	ZUUMA.ZUUMA3	TWO	02/01/2018	

TRANSITION ROUTES:

Transition Name	Transition Computer Codes	From FIX/NAVAID	To FIX/NAVAID	Course	Distance	MEA	MOCA	MAA	Crossing Altitudes / Fixes
BURGL	BURGL.ZUUMA3	BURGL	BURGL						
			DOUIT	136.33	26.52	17000	6600		
			UCANN	132.40	28.02	17000	6800		AT/BELOW FL290
			ALMST	132.60	12.31	17000	7500		BETWEEN 17000 AND FL210
			DANYY	133.47	14.59	13000	9700		BETWEEN 13000 AND 17000
			ZUUMA	135.08	18.72	9000			BETWEEN 9000 AND 11000
REBRG	REBRG.ZUUMA3	REBRG	REBRG						
			STADD	185.02	19.70	17000	2800		
			DOUIT	179.23	23.09	17000	6600		
			UCANN	132.40	28.02	17000	6800		AT/BELOW FL290
			ALMST	132.60	12.31	17000	7500		BETWEEN 17000 AND FL210
			DANYY	133.47	14.59	13000	9700		BETWEEN 13000 AND 17000
			ZUUMA	135.08	18.72	9000			BETWEEN 9000 AND 11000

ARRIVAL ROUTE DESCRIPTION:

LANDING KLAX RWY 06L/R, RWY 07L/R: FROM ZUUMA ON TRACK 141.86/16.38 TO CROSS WAKER AT 6000 AND AT 210 KIAS. EXPECT ILS OR LOC RWY6L APPROACH OR RADAR VECTORS TO FINAL APPROACH COURSE.

LANDING KSMO: FROM ZUUMA ON TRACK 141.86/16.38 TO CROSS WAKER AT 6000 AND AT 210 KIAS. EXPECT RNAV (GPS) RWY 3 APPROACH.

PROCEDURAL DATA NOTES:

NOTE: RADAR REQUIRED

NOTE: RNAV 1NOTE: DME/DME/IRU OR GPS REQUIRED

NOTE: TURBOJET AIRCRAFT ONLY

NOTE: ZUUMA STAR USED DURING LAX EAST TRAFFIC OPERATIONS AND NOISE ABATEMENT CONFIGURATION 0000-0630 LCL.

NOTE: LAX TRAFFIC EXPECT RWY 6L UNLESS OTHERWISE ASSIGNED.

NOTE: IF UNABLE TO MEET SPEED RESTRICTION AT ALMST, ADVISE ATC ON INITIAL CONTACT.

FIXES AND/OR HOLDING PATTERNS:

CHART HOLDING AT ALMST: NW, RT, 132.60 INBOUND, 10NM LEGS.

COMMUNICATIONS:

SOCAL APP CON, LOS ANGELES D-ATIS, LOS ANGELES TOWER (N/S), SANTA MONICA ATIS, SANTA MONICA TOWER.



FEDERAL AVIATION ADMINISTRATION
FLIGHT STANDARDS SERVICE
STANDARD TERMINAL ARRIVAL (STAR)

Bearings, headings, courses, tracks and radials are magnetic. Elevations and altitudes are in feet, MSL. Altitudes are minimum altitudes unless otherwise indicated.
Distances are in nautical miles (NM). Graphic depictions attached.

Arrival Name	Number	STAR Computer Code	Superseded Number	Dated	Effective Date
ZUUMA (RNAV)	THREE	ZUUMA.ZUUMA3	TWO	02/01/2018	

AIRPORTS SERVED:

LOS ANGELES INTL, LOS ANGELES, CA (KLAX)
SANTA MONICA MUNICIPAL AIRPORT, SANTA MONICA, CA (KSMO)

LOST COMMUNICATIONS PROCEDURE:

LANDING LAX: PROCEED ON THE RNAV (RNP) Z RWY 6L OR ILS OR LOC RWY 6L APPROACH.
LANDING SMO: PROCEED ON THE RNAV (GPS) RWY 03 APPROACH.

REMARKS:

ABBREVIATED AMENDMENT, NOTE CHANGE ONLY. AMENDMENT DOES NOT SATISFY PERIODIC REVIEW REQUIREMENTS
MINIMUM OBSTRUCTION CLEARANCE ALTITUDE (MOCA) NOT REQUIRED FOR THIS PROCEDURE (ATC REQUEST), DO NOT CHART.

ADDITIONAL FLIGHT DATA:

DME/DME ASSESSMENT: SAT (RNP 2.0)
REFERENCE MAGNETIC VARIATION = KLAX 12E/2020

FLIGHT INSPECTED BY:

FLIGHT INSPECTION REVIEW NOT REQUIRED - PROCESSED IAW AIRCRAFT OPERATIONS GROUP (AJW-333) MEMO, OCT 3, 2018

Name

Organization

Date

Digitally signed by
JACOB POWERS
Feb 06, 2019

Signature

DEVELOPED BY:

JOSEPH ZEDER

Name

AJV-A442

Organization

Date

Digitally signed by
JOSEPH L ZEDER

Feb 05, 2019

Signature

APPROVED BY:

MARLON ROBINSON, MANAGER

Name

AJV-A44

Organization

Date

Digitally signed by
JACOB POWERS
Feb 06, 2019

Signature

CHANGES:

1. CHANGED LOST COMM PROCEDURES AT LAX FROM PROCEED ON THE RNAV (RNP) Z RWY 6L APPROACH TO PROCEED ON THE RNAV (RNP) Z RWY 6L OR ILS OR LOC RWY 6L APPROACH.

REASONS:

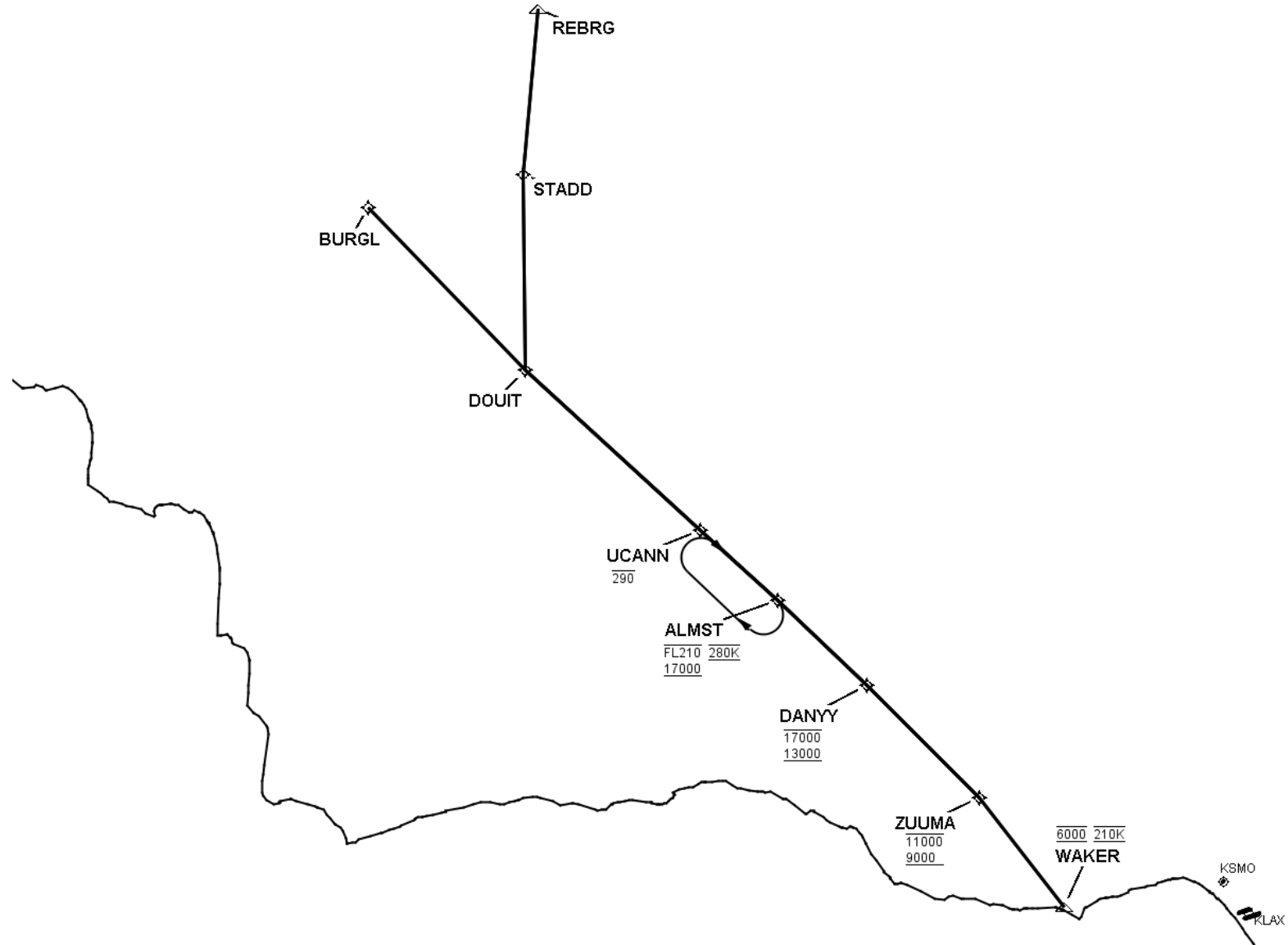
1. CURRENT LOST COMM FOR KLAX DOES NOT ACCOUNT FOR THOSE AIRCRAFT ABLE TO FLY THE RNAV STAR BUT NOT ABLE TO FLY THE RNP.



FEDERAL AVIATION ADMINISTRATION
FLIGHT STANDARDS SERVICE
STANDARD TERMINAL ARRIVAL (STAR)

Bearings, headings, courses, tracks and radials are magnetic. Elevations and altitudes are in feet, MSL. Altitudes are minimum altitudes unless otherwise indicated.
Distances are in nautical miles (NM). Graphic depictions attached.

Arrival Name	Number	STAR Computer Code	Superseded Number	Dated	Effective Date
ZUUMA (RNAV)	THREE	ZUUMA.ZUUMA3	TWO	02/01/2018	
Graphic Depiction 1					



QUALITY
16
CHECKED

FEDERAL AVIATION ADMINISTRATION
FLIGHT STANDARDS SERVICE
STAR (DATA RECORD)

Arrival Name ZUUMA (RNAV)	Number THREE	STAR Computer Code ZUUMA.ZUUMA3		Superseded Number TWO		Dated 02/01/2018		Effective Date	
FIX/NAVAID	LAT/LONG	C	FO/FB	LEG TYPE	TC	DIST (NM)	ALTITUDE	SPEED	REMARKS
En Route Transition									
BURGL	353957.68N / 1200627.86W	Y		IF					BURGL.ZUUMA3
DOUIT	351719.89N / 1194927.26W	Y	FB	TF	148.33	26.52			
UCANN	345429.21N / 1192937.51W	Y	FB	TF	144.40	28.02	AT/BELOW FL290		
ALMST	344425.77N / 1192058.30W	Y	FB	TF	144.60	12.31	17000BFL210	AT 280K	
DANYY	343223.00N / 1191057.56W	Y	FB	TF	145.47	14.59	13000B17000		
ZUUMA	341637.95N / 1185840.98W	Y	FB	TF	147.08	18.72	9000B11000		
En Route Transition									
REBRG	355853.00N / 1193653.00W	Y		IF					REBRG.ZUUMA3
STADD	354000.93N / 1194357.63W	Y	FB	TF	197.02	19.70			
DOUIT	351719.89N / 1194927.26W	Y	FB	TF	191.23	23.09			
UCANN	345429.21N / 1192937.51W	Y	FB	TF	144.40	28.02	AT/BELOW FL290		
ALMST	344425.77N / 1192058.30W	Y	FB	TF	144.60	12.31	17000BFL210	AT 280K	
DANYY	343223.00N / 1191057.56W	Y	FB	TF	145.47	14.59	13000B17000		
ZUUMA	341637.95N / 1185840.98W	Y	FB	TF	147.08	18.72	9000B11000		
Common Route									
ZUUMA	341637.95N / 1185840.98W	Y		IF			9000B11000		ZUUMA.ZUUMA3
WAKER	340153.80N / 1185000.06W	Y	FB	TF	153.86	16.38	AT 6000	AT 210K	
KSMO									
Runway Transition									
ZUUMA	341637.95N / 1185840.98W	Y		IF			9000B11000		
WAKER	340153.80N / 1185000.06W	Y	FB	TF	153.86	16.38	AT 6000	AT 210K	
KLAX:RWY 06L,RWY 06R,RWY 07L,RWY 07R									

