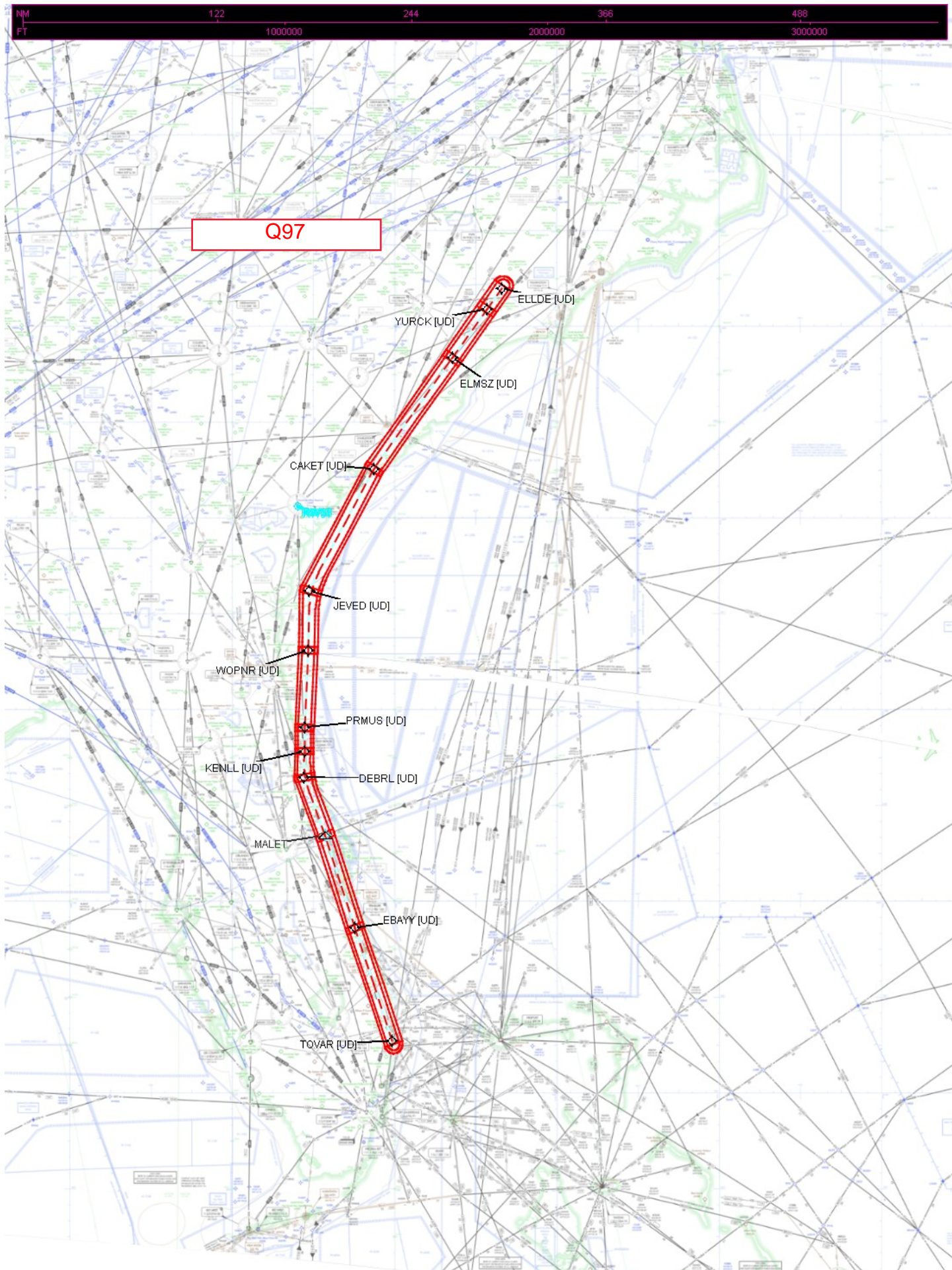
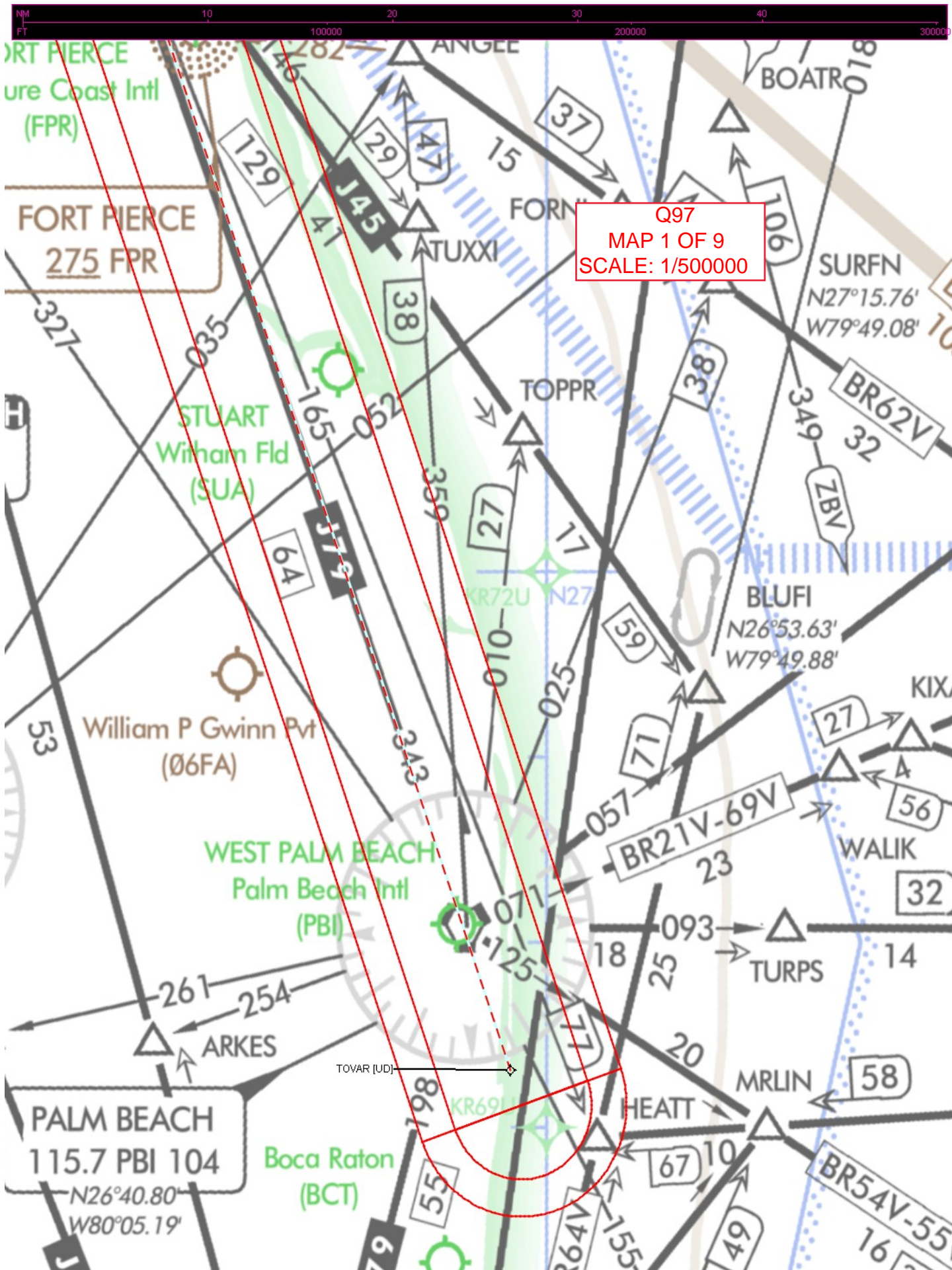


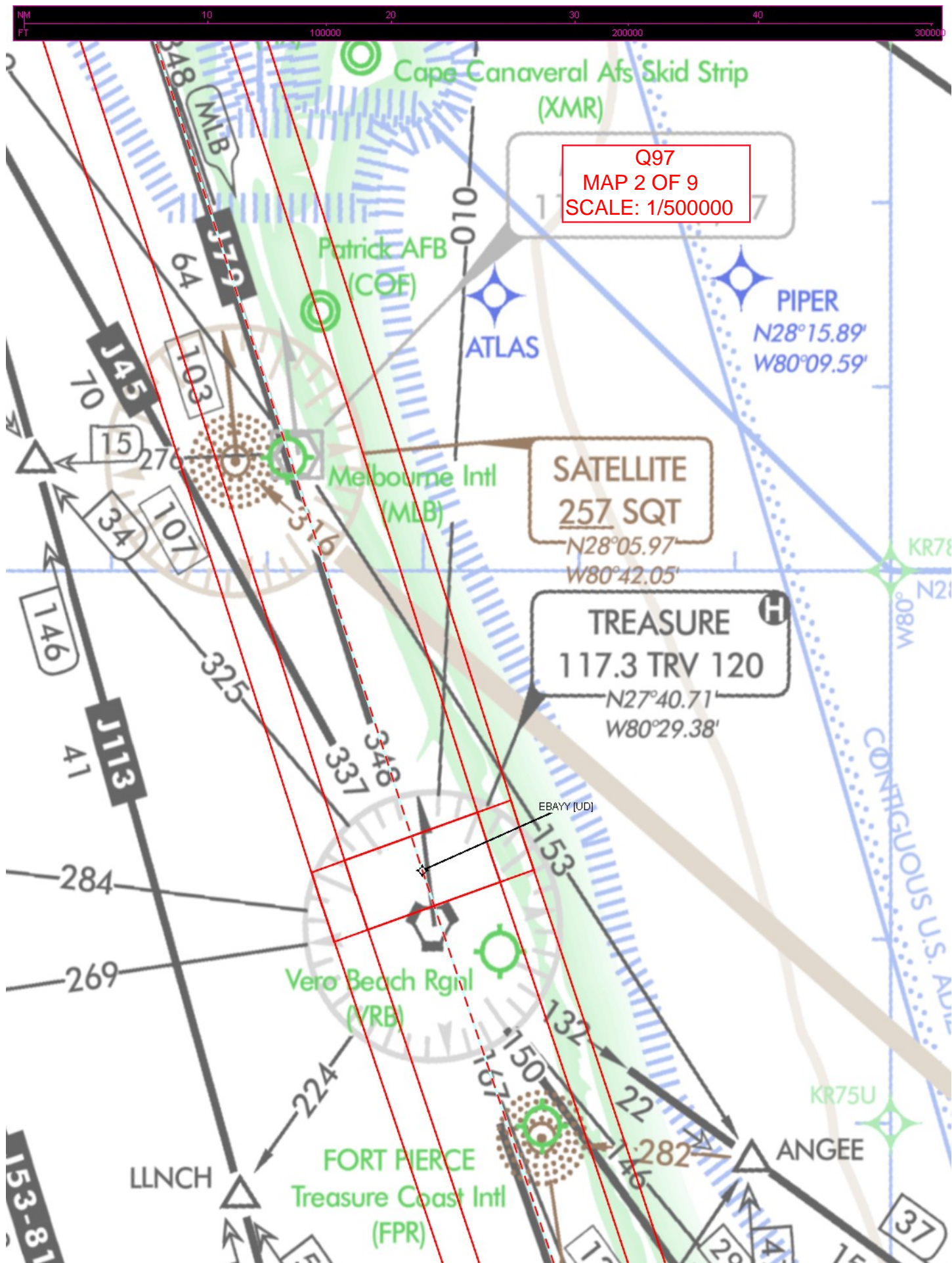
<b>Flight Procedure Tracking Form</b>		<b>Action:</b> NEW	<b>Task Type:</b> AWSEG	<b>Date Open:</b> 04/26/2018	<b>Task #:</b> 2018042631530701001	<b>Request #:</b> 20180426315307
<b>Procedure:</b> Q 97 TOVAR FL TO ELLDE NC NEW			<b>Airport ID:</b> FL	<b>Airport:</b>		<b>Reimbursable #:</b> NO
<b>City:</b>	<b>ST:</b> FL	<b>GPS #:</b>	<b>Estimated Chart Date:</b> 11/08/2018		<b>FICO #:</b>	
<b>Fac ID:</b> N/A		<b>Fac. Type:</b>		<b>Specialist:</b> BARRY SMITH		
<b>Procedure Review</b>						
	<b>Rec'd</b>	<b>Rel'd</b>	<b>Full Name</b>	<b>Comments</b>		
<b>Lead:</b>	05/15/2018	07/12/2018	MARK ADAMS	QUALITY		
<b>QA:</b>	07/12/2018			13		
<b>Liaison:</b>				CHECKED		
<b>Procedure Comments:</b>			ENROUTE	<b>Remark Type:</b> INFORMATION		
<p>STARTING POINT: TOVAR, FL 263305.09N-0800219.75W</p> <p>FLORIDA METROPLEX PROJECT</p> <p>FLIGHT INSPECTION REVIEW NOT REQUIRED - PROCESSED IAW AIRCRAFT OPERATIONS GROUP (AJW-333) MEMO, DEC 22, 2017.</p> <p>CONTACT: LONNIE EVERHART (405) 954-4576</p>						



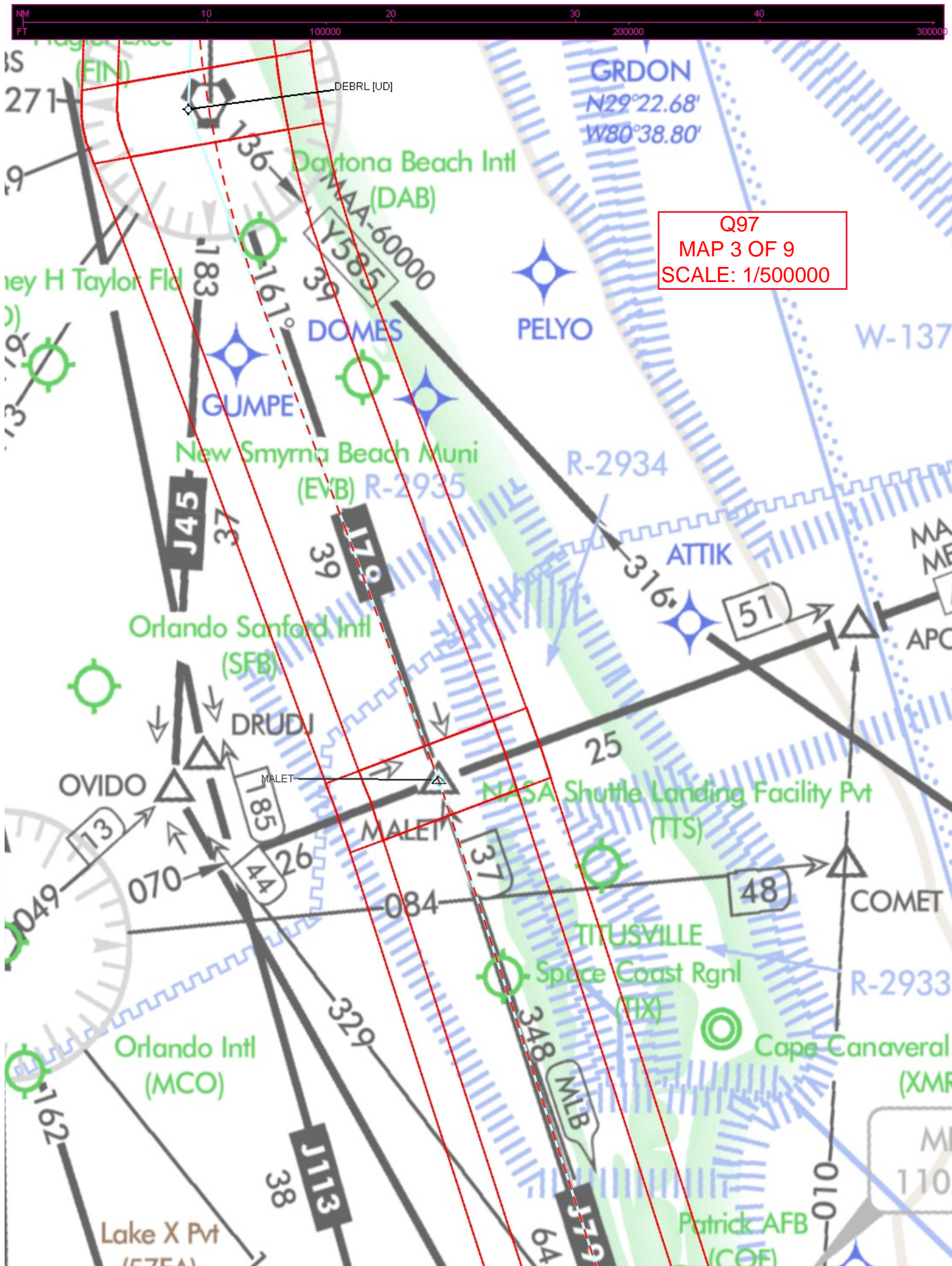




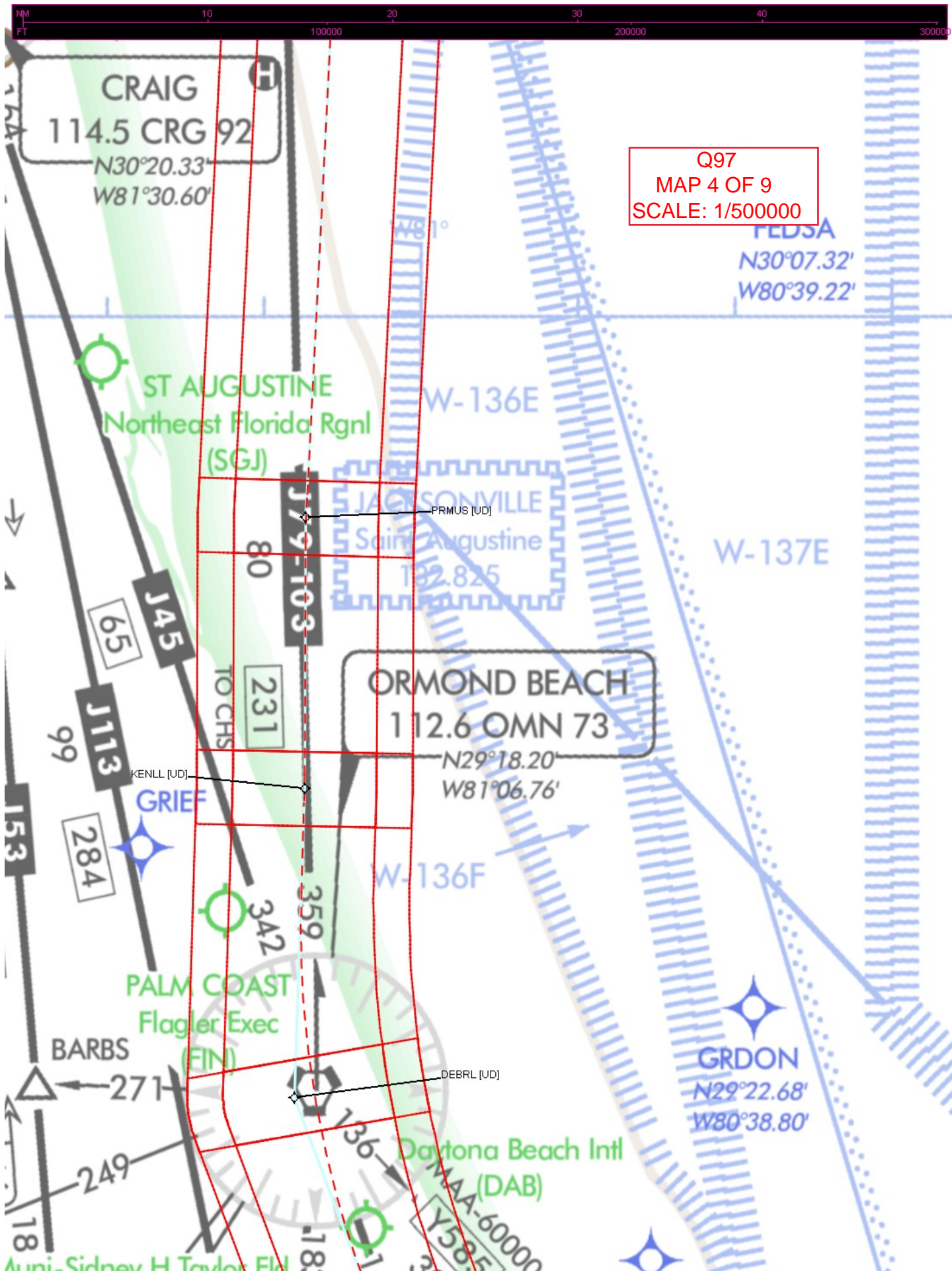


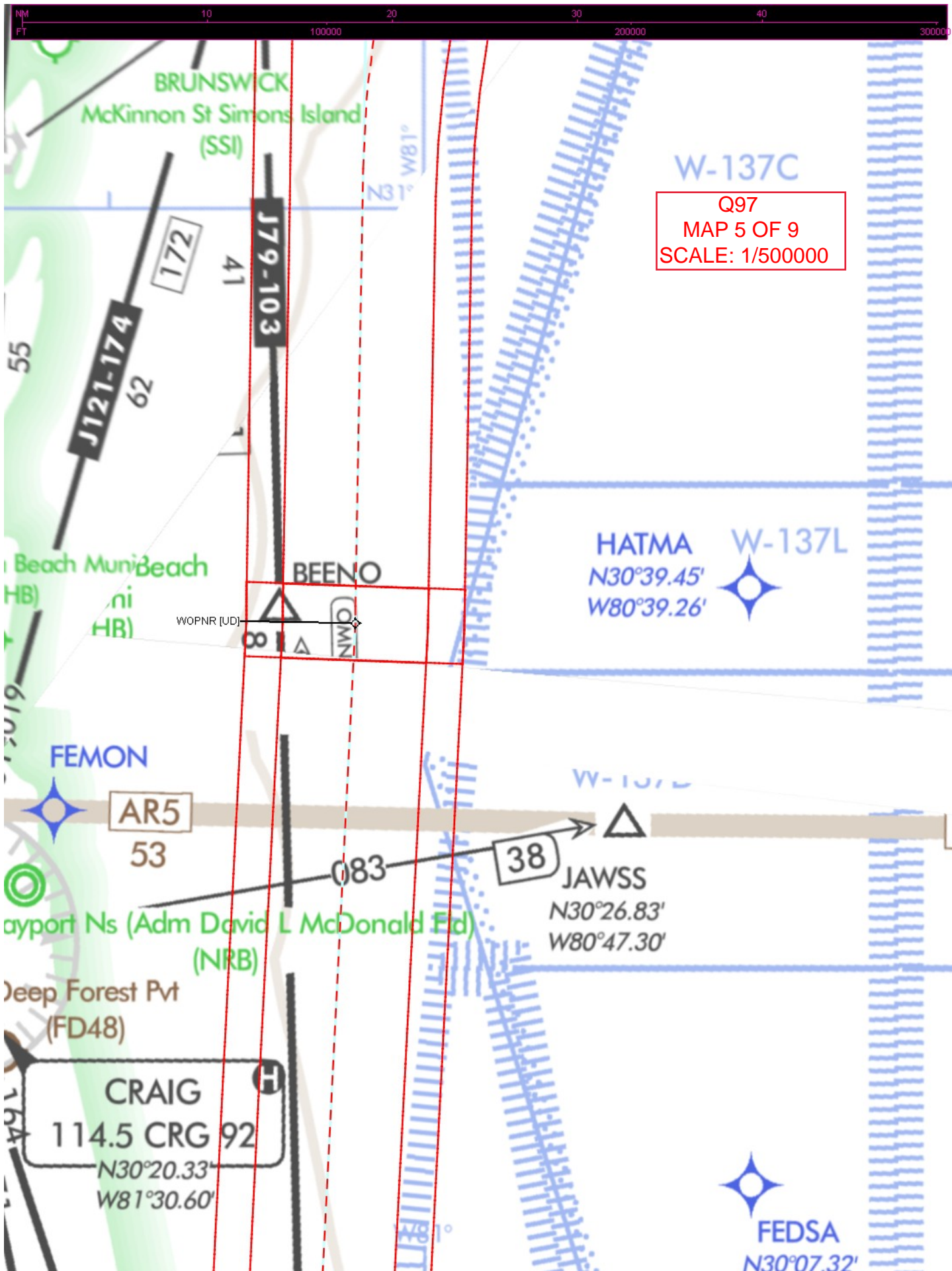




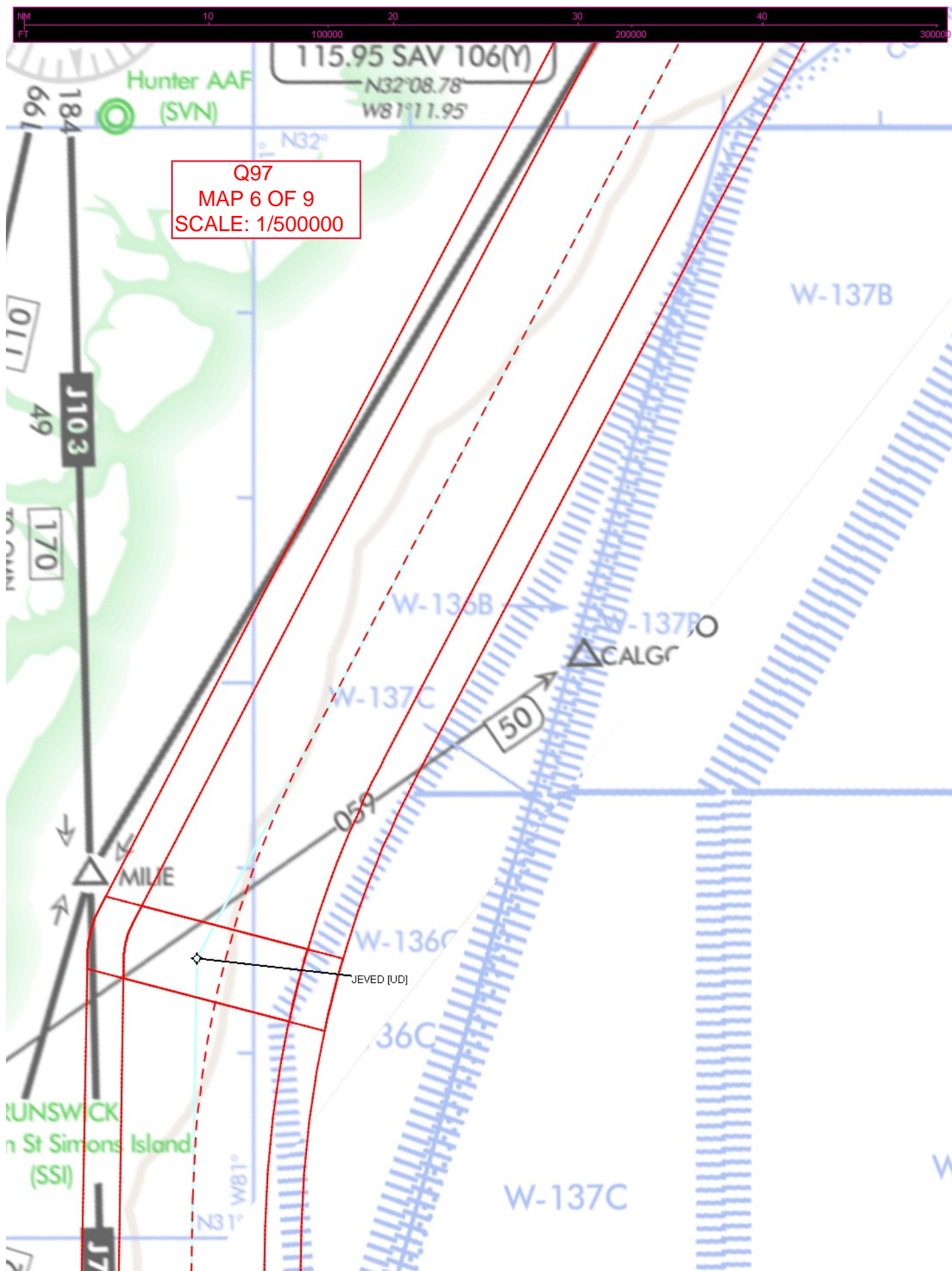




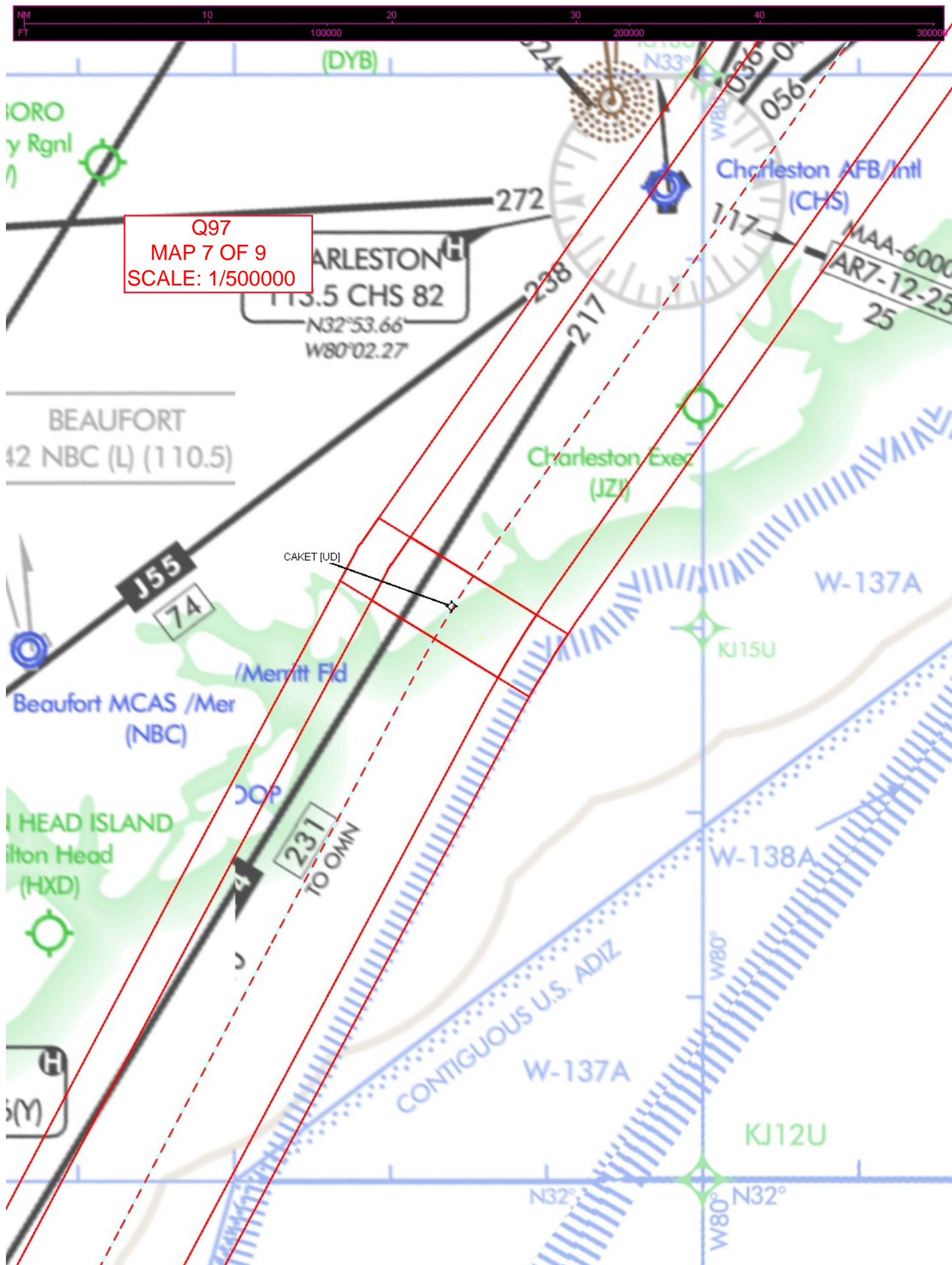


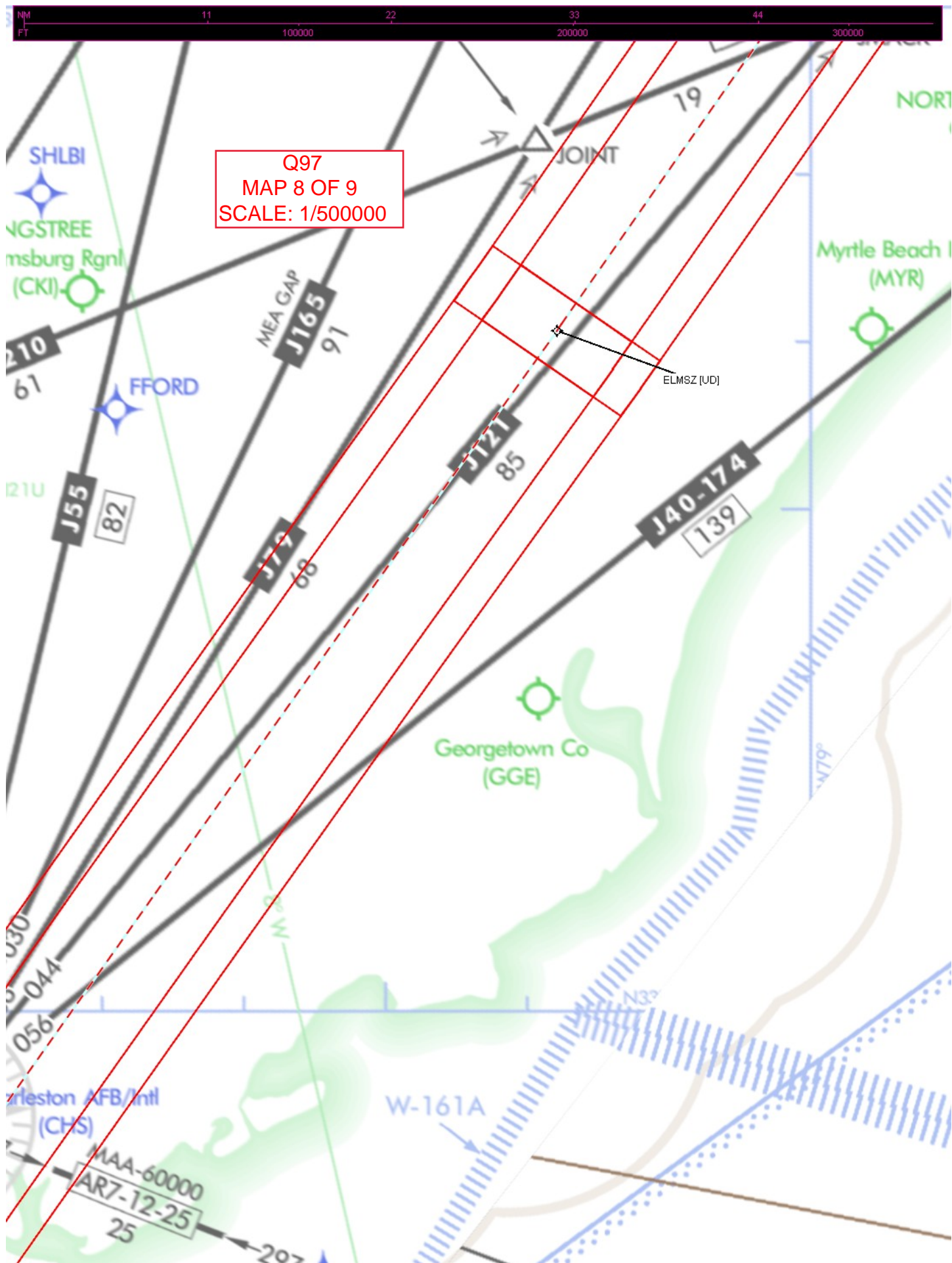




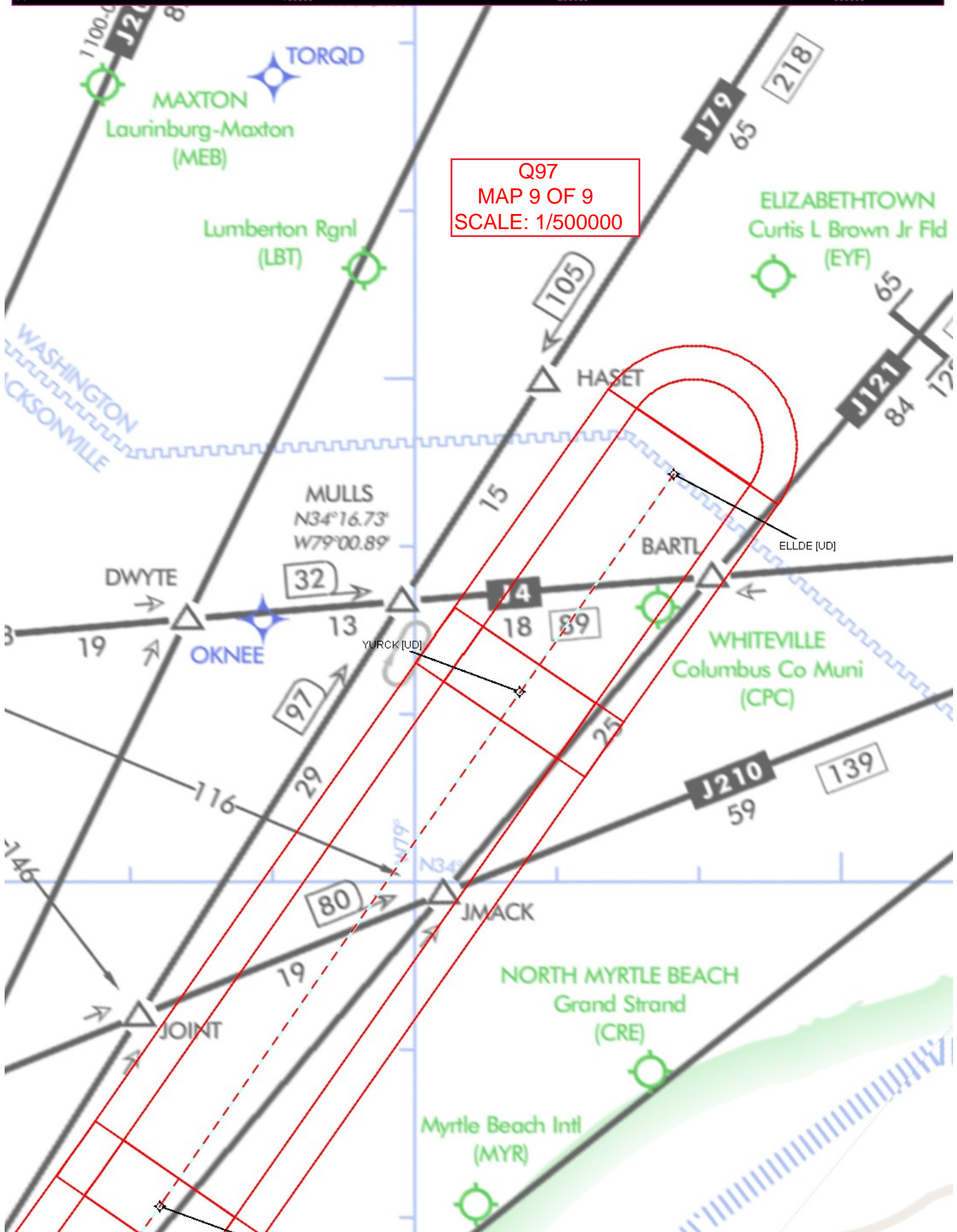












Q97  
MAP 9 OF 9  
SCALE: 1/500000

YURCK (UD)

ELLDE (UD)

JMACK

JOINT

MAXTON  
Laurinburg-Maxton  
(MEB)

ELIZABETHTOWN  
Curtis L Brown Jr Fld  
(EYF)

WHITEVILLE  
Columbus Co Muni  
(CPC)

NORTH MYRTLE BEACH  
Grand Strand  
(CRE)

Myrtle Beach Intl  
(MYR)

MULS  
N34°16.73'  
W79°00.89'

DWYTE

HASET

BARTL

J200

J79

J121

J210

32

14

18

89

139

80

19

97

19

116

15

25

19

59

65

65

84

12

12

12

12

12

12

12

12

12

12