

**Name:** MARK SCHOENHOFF  
**Project Name:** ACR  
**Output File:** Q97\_NORTH Q-ROUTE  
TOVAR ELLDE  
20180407\_1621  
**Procedure Name:** Q97  
**Software:** RNAV-Pro™  
**Version:** 2.39g  
**Date/Time:** 4/7/2018 4:22:25 PM  
**Input File:** [Q97\\_NORTH TOVAR  
ELLDE 20180407\\_1347.txt](#)  
**Databases:** AIRNAV Date: 4/6/2018  
CIFP Date: 11/9/2017  
DTED® (MAX) Date: 2002

## Results Summary:

**Flyability**



**DME/DME**



No Critical DMEs Exist

**Radars**

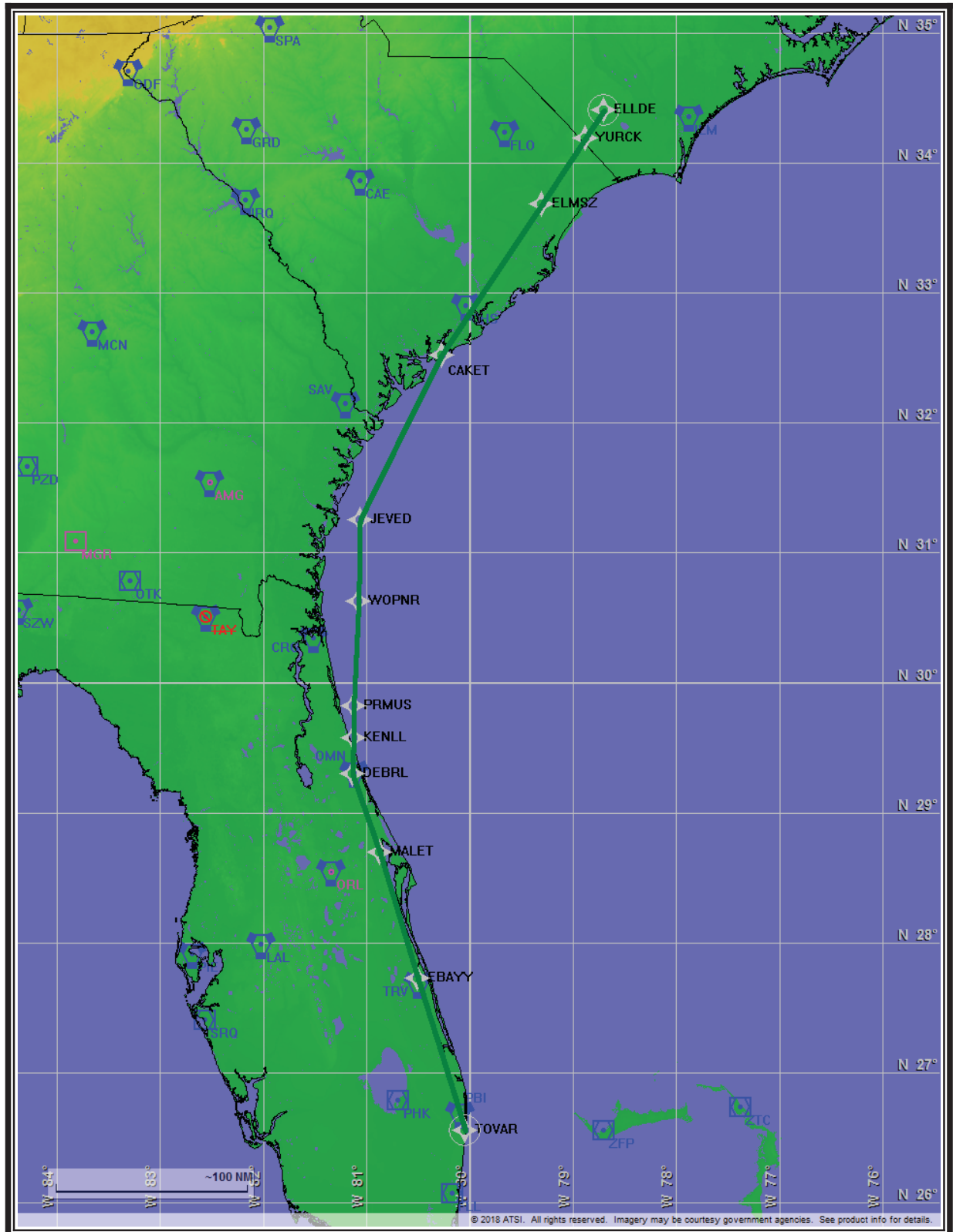


**Comms**



**TERPS**

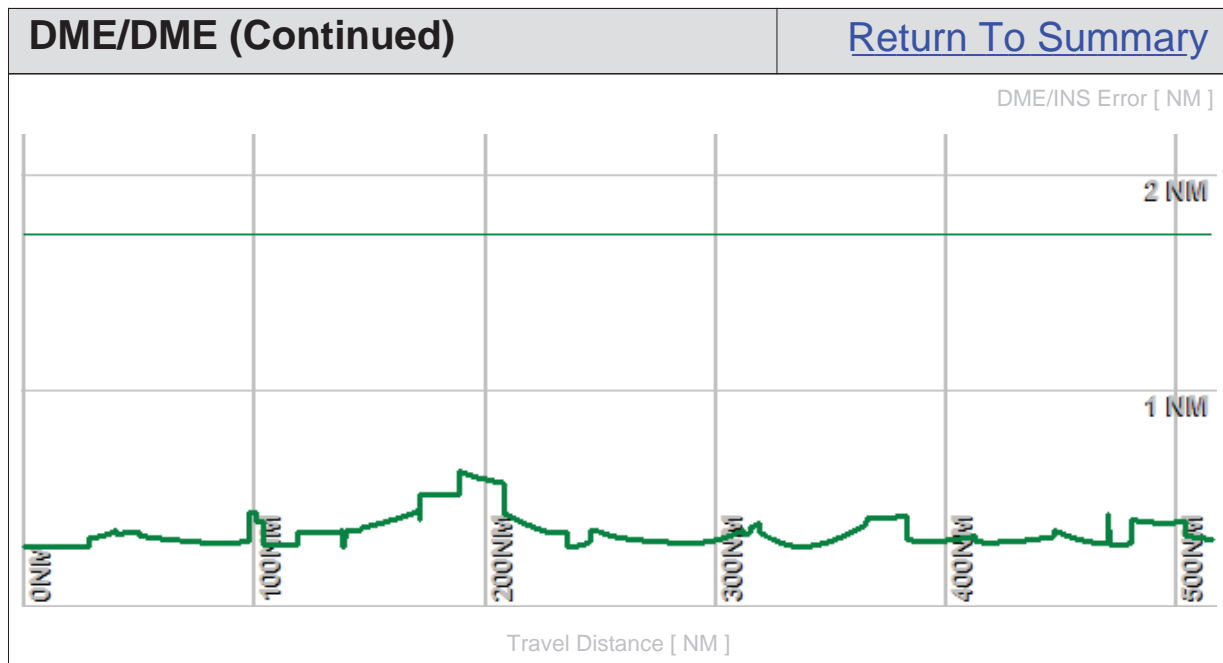




Flight Plan					<a href="#">Return To Summary</a>		
Name	Type	Lat/Lon	Alt [ft]	VNAV Mode	IAS [Kts]	Turn Type	Leg Type
TOVAR	WP	N 26° 33' 5.09" W 80° 2' 19.75"	18000.0	Step	240.0	Fly By	TF
EBAYY	WP	N 27° 43' 40.20" W 80° 30' 3.59"	18000.0	Step	240.0	Fly By	TF
MALET	WP	N 28° 41' 29.90" W 80° 52' 4.30"	18000.0	Step	240.0	Fly By	TF
DEBRL	WP	N 29° 17' 48.73" W 81° 8' 2.88"	18000.0	Step	240.0	Fly By	TF
KENLL	WP	N 29° 34' 28.35" W 81° 7' 25.26"	18000.0	Step	240.0	Fly By	TF
PRMUS	WP	N 29° 49' 5.67" W 81° 7' 20.74"	18000.0	Step	240.0	Fly By	TF
WOPNR	WP	N 30° 37' 36.03" W 81° 4' 26.44"	18000.0	Step	240.0	Fly By	TF
JEVED	WP	N 31° 15' 2.60" W 81° 3' 40.14"	18000.0	Step	240.0	Fly By	TF
CAKET	WP	N 32° 31' 8.63" W 80° 16' 9.21"	18000.0	Step	240.0	Fly By	TF
ELMSZ	WP	N 33° 40' 36.61" W 79° 17' 59.56"	18000.0	Step	240.0	Fly By	TF
YURCK	WP	N 34° 11' 14.80" W 78° 52' 40.62"	18000.0	Step	240.0	Fly By	TF
ELLDE	WP	N 34° 24' 14.57" W 78° 41' 50.60"	18000.0	Step	240.0	Fly Over	TF

Flyability		<a href="#">Return To Summary</a>
Settings:	<b>Flight Type:</b> EnRoute <b>Aircraft Category:</b> Cat D <b>Climb Gradient:</b> <i>None assigned</i> <b>Ground Speeds:</b> Table: <b>200.0 Kts</b> up to <b>11000.0 ft</b> <b>240.0 Kts</b> up to <b>18000.0 ft</b> <b>260.0 Kts</b> up to <b>24000.0 ft</b> <b>340.0 Kts</b> up to <b>99900.0 ft</b>  <b>Wind Settings:</b> <i>None assigned</i> <b>Descent During a Turn:</b> Allowed <b>VNAV Mode:</b> Flight Plan	
	Entire track is fly-able	

DME/DME		<a href="#">Return To Summary</a>
<b>Settings:</b>	<p> <b>RNP:</b> 2.0  <b>Flight Mode:</b> Manual  <b>Line of Sight (DTED Level 0 Max):</b> Evaluated  <b>DME Restrictions:</b> Evaluated  <b>Inertial Drift:</b> Enabled              <b>Initial Drift:</b> 0.558 NM              <b>INS Drift Rate:</b> 8.000 NM/Hour  <b>Range Mode:</b> OSV  <b>Co-Frequencies:</b> Evaluated  <b>RNP Edges:</b> Evaluated  <b>Min DME Range:</b> 3.0 NM  <b>Allowed Gap Length:</b> 4.0 NM  <b>DME Types:</b> VOR/DME, VORTAC, Standalone, and User  <b>DME Include Angles:</b> 30 to 150  <b>Critical DMEs:</b> Not allowed  <b>DoD Facilities:</b> Not included  <b>Foreign Facilities:</b> Not included  <b>Low DMEs:</b> Not included  <b>Terminal DMEs:</b> Not included  <b>Flight Check DMEs:</b> Selected  <b>Higher Altitudes:</b> Evaluated  <b>Near Maximum Altitude:</b> Evaluated         </p>	
<p><b>Total Number of DMEs Used:</b> 19</p> <p>Maximum DME Error: 0.628 NM.</p> <p>No Critical DMEs were found.</p> <p><b>Available DMEs:</b> ZBV, DHP, FLL, PBI, PHK, TRV, VKZ, ORL, LAL, PIE, OMN, CRG, AMG, SAV, CHS, CAE, FLO, ILM, GSO, RDU</p> <p><b>Disabled DMEs:</b> TAY</p> <p><b>Foreign DMEs within range:</b> I-ZFP, ZFP, ZGV, I-ZQA, ZQA, ZTC</p>		



DME/DME (Continued)						<a href="#">Return To Summary</a>			
DMEs Used									
#	Name	Lat/Lon/MAGVAR	Range	Source	Critical	Err. [NM]	Status	Time	Distance
1	DHP	N 25° 47' 59.86" W 80° 20' 56.53" 04 W	H	Database	NO	0.628	Enabled	1.6%	1.6%
2	PHK	N 26° 46' 57.87" W 80° 41' 29.16" 00 E	H	Database	NO	0.645	Enabled	18.9%	18.9%
3	FLL	N 26° 4' 26.20" W 80° 9' 59.19" 06 W	H	Database	NO	0.628	Enabled	2.2%	2.2%
4	VKZ	N 25° 45' 6.84" W 80° 9' 15.99" 04 W	H	Database	NO	0.628	Enabled	1.3%	1.3%
5	TRV	N 27° 40' 42.33" W 80° 29' 23.01" 07 W	H	Database	NO	0.628	Enabled	9.7%	9.7%
6	ZBV	N 25° 42' 15.00" W 79° 17' 40.00" 04 W	H	User	NO	0.628	Enabled	2.2%	2.2%
7	ORL	N 28° 32' 33.81" W 81° 20' 6.07" 00 E	H + <a href="#">ESV</a>	User	NO	1.295	Enabled	11.3%	11.3%
8	LAL	N 27° 59' 10.25" W 82° 0' 50.01" 01 E	H	Database	NO	0.628	Enabled	12.8%	12.8%
9	PIE	N 27° 54' 27.95" W 82° 41' 3.51" 05 W	H	Database	NO	0.666	Enabled	13.9%	13.9%
10	OMN	N 29° 18' 11.71" W 81° 6' 45.71" 00 E	H	Database	NO	0.628	Enabled	7.0%	7.0%
11	CRG	N 30° 20' 19.97" W 81° 30' 35.74" 03 W	H	Database	NO	0.628	Enabled	20.9%	20.9%
12	AMG	N 31° 32' 11.60" W 82° 30' 29.12" 00 E	H + <a href="#">ESV</a>	User	NO	1.303	Enabled	24.1%	24.1%
13	SAV	N 32° 8' 46.56" W 81° 11' 56.78" 06 W	H	Database	NO	0.628	Enabled	16.0%	16.0%
14	CHS	N 32° 53' 39.55" W 80° 2' 16.13" 05 W	H	Database	NO	1.352	Enabled	17.7%	17.7%
15	CAE	N 33° 51' 26.10" W 81° 3' 14.05" 02 W	H	Database	NO	0.870	Enabled	15.9%	15.9%

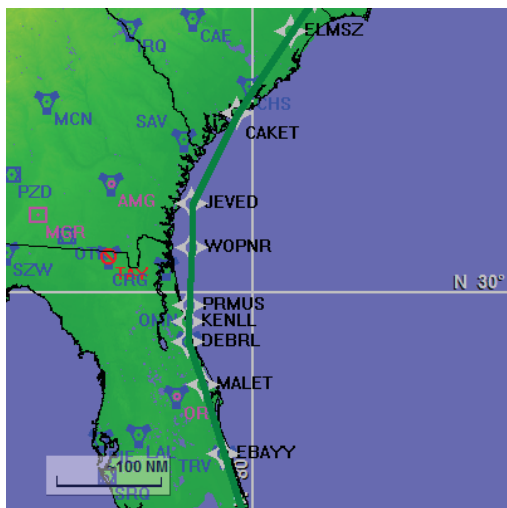
DME/DME (Continued)						<a href="#">Return To Summary</a>			
DMEs Used (Continued)									
#	Name	Lat/Lon/MAGVAR	Range	Source	Critical	Err. [NM]	Status	Time	Distance
16	FLO	N 34° 13' 58.69" W 79° 39' 25.78" 03 W	H	Database	NO	0.628	Enabled	7.1%	7.1%
17	ILM	N 34° 21' 5.93" W 77° 52' 27.77" 07 W	H	Database	NO	0.628	Enabled	10.5%	10.5%
18	GSO	N 36° 2' 44.49" W 79° 58' 34.95" 03 W	H + <a href="#">ESV</a>	User	NO	0.628	Enabled	4.5%	4.5%
19	RDU	N 35° 52' 21.08" W 78° 47' 0.03" 04 W	H + <a href="#">ESV</a>	User	NO	0.628	Enabled	2.3%	2.3%
	Total Coverage							100.0%	100.0%
Flight Check DME Selection									
Distance [NM]		Selected DMEs ( <a href="#">Required</a> )						Alternate	
0.0		ZBV	FLL	DHP	PHK	VKZ	TRV		
19.9		ZBV	TRV	DHP	PHK	VKZ	FLL		
39.7		ZBV	ORL	DHP	PHK	LAL	PBI		
63.7		PIE	ORL	TRV	PHK	LAL	DHP		
74.5		PIE	ORL	FLL	PHK	LAL	DHP		
84.5		PIE	DHP	FLL	PHK	LAL	ORL		
94.5		PIE	TRV	FLL	PHK	LAL	ORL		
114.9		PIE	TRV	ORL	OMN	LAL	PHK		
135.3		PIE	TRV	ORL	OMN	LAL	CRG		
145.4		PIE	TRV	ORL	CRG	LAL	OMN		
155.5		PIE	TRV	ORL	CRG	AMG	LAL		
173.5		PIE	LAL	ORL	CRG	AMG	OMN		
190.7		OMN	ORL	CRG	AMG				
205.3		SAV	OMN	ORL	CRG	AMG			
253.8		SAV	OMN	ORL	CRG	AMG			
290.4		SAV	CHS	CAE	CRG	AMG			
376.9		SAV	CHS	CAE	FLO	AMG			
444.0		ILM	CHS	CAE	FLO	GSO			

DME/DME (Continued)					<a href="#">Return To Summary</a>	
<i>Flight Check DME Selection (Continued)</i>						
Distance [NM]	Selected DMEs (Required)					Alternate
462.1	ILM	CHS	CAE	FLO	GSO	
499.3	ILM	CHS	RDU	FLO	GSO	

Available DMEs by Waypoints		<a href="#">Return To Summary</a>
Waypoint Before	Waypoint After	DME List
TOVAR	EBAYY	ORL, ZBV, DHP, FLL, LAL, PHK, PIE, TRV, VKZ, OMN*, and PBI*
EBAYY	MALET	ORL, DHP, FLL, LAL, OMN, PHK, PIE, TRV, and PBI*
MALET	DEBRL	AMG, ORL, CRG, LAL, OMN, PIE, and TRV
DEBRL	KENLL	AMG, ORL, CRG, LAL, PIE, and OMN*
KENLL	PRMUS	AMG, ORL, CRG, and OMN
PRMUS	WOPNR	AMG, ORL, CRG, OMN, and SAV
WOPNR	JEVED	AMG, ORL, CRG, OMN, and SAV
JEVED	CAKET	AMG, CAE, CHS, CRG, and SAV
CAKET	ELMSZ	AMG, GSO, CAE, CHS, FLO, ILM, and SAV
ELMSZ	YURCK	GSO, CAE, CHS, FLO, and ILM
YURCK	ELLDE	GSO, RDU, CHS, FLO, and ILM

User Data					<a href="#">Return To Summary</a>		
User Data Files							
#	File Name						
1	Q97.udt						
User DMEs							
#	Name	Lat/Lon/MAGVAR	Range	Elevation [ft]	Frequency	Replaces	Status
1	EYW	N 24° 35' 9.16" W 81° 48' 1.71" 01 E	H	10.0	113.50	EYW	Not Used
Restriction:		Bearing [True]: 124.0° to 134.0° Bearing [Mag]: 123.0° to 133.0°			Distance: Beyond 20.0 NM Altitude: Below 99999.0 ft		
ESV:		Bearing [True]: 77.0° to 105.0° Bearing [Mag]: 76.0° to 104.0°			Arc Distance: Out to 158.0 NM Altitude: 17100.0 to 45000.0 ft		
2	RDU	N 35° 52' 21.08" W 78° 47' 0.03" 04 W	H	429.2	117.20	RDU	Used
ESV:		Bearing [True]: 51.0° to 76.0° Bearing [Mag]: 55.0° to 80.0°			Arc Distance: Out to 160.0 NM Altitude: 18000.0 to 45000.0 ft		
3	RIC	N 37° 30' 8.46" W 77° 19' 13.00" 09 W	H	158.1	114.10	RIC	Not Used
Restriction:		Bearing [True]: 51.0° to 66.0° Bearing [Mag]: 60.0° to 75.0°			Distance: Beyond 10.0 NM Altitude: Below 1700.0 ft		
Restriction:		Bearing [True]: 51.0° to 66.0° Bearing [Mag]: 60.0° to 75.0°			Distance: Beyond 10.0 NM Altitude: Below 1700.0 ft		
ESV:		Bearing [True]: 21.0° to 241.0° Bearing [Mag]: 30.0° to 250.0°			Arc Distance: Out to 160.0 NM Altitude: 18000.0 to 45000.0 ft		
4	GSO	N 36° 2' 44.49" W 79° 58' 34.95" 03 W	H	909.0	116.20	GSO	Used
ESV:		Bearing [True]: 77.0° to 177.0° Bearing [Mag]: 80.0° to 180.0°			Arc Distance: Out to 160.0 NM Altitude: 18000.0 to 45000.0 ft		
5	EMI	N 39° 29' 42.03" W 76° 58' 42.86" 08 W	H	820.0	117.90	EMI	Not Used
Restriction:		Bearing [True]: 273.0° to 47.0° Bearing [Mag]: 281.0° to 55.0°			Distance: Beyond 35.0 NM Altitude: Below 3000.0 ft		
ESV:		Bearing [True]: 47.0° to 222.0° Bearing [Mag]: 55.0° to 230.0°			Arc Distance: Out to 160.0 NM Altitude: 18000.0 to 45000.0 ft		
6	LFV	N 42° 1' 1.88" W 70° 2' 14.04" 16 W	H	150.8	114.70	LFV	Not Used
ESV:		Bearing [True]: 224.0° to 14.0° Bearing [Mag]: 240.0° to 30.0°			Arc Distance: Out to 160.0 NM Altitude: 18000.0 to 45000.0 ft		
7	BGR	N 44° 50' 30.46" W 68° 52' 26.28" 19 W	H	360.1	114.80	BGR	Not Used
ESV:		Bearing [True]: 201.0° to 31.0° Bearing [Mag]: 220.0° to 50.0°			Arc Distance: Out to 160.0 NM Altitude: 18000.0 to 45000.0 ft		

User Data (Continued)					<a href="#">Return To Summary</a>		
User DMEs (Continued)							
#	Name	Lat/Lon/MAGVAR	Range	Elevation [ft]	Frequency	Replaces	Status
8	MLT	N 45° 35' 12.15" W 68° 30' 55.67" 20 W	H	553.2	117.90	MLT	Not Used
Restriction:		Bearing [True]: 310.0° to 330.0° Bearing [Mag]: 330.0° to 350.0°			Distance: Beyond 35.0 NM Altitude: Below 6000.0 ft		
ESV:		Bearing [True]: 200.0° to 20.0° Bearing [Mag]: 220.0° to 40.0°			Arc Distance: Out to 160.0 NM Altitude: 18000.0 to 45000.0 ft		
9	ZBV	N 25° 42' 15.00" W 79° 17' 40.00" 04 W	H	10.0	110.31	ZBV	Used
10	ORL	N 28° 32' 33.81" W 81° 20' 6.07" 00 E	H	101.7	112.20	ORL	Used
Restriction:		Bearing [True]: 246.0° to 289.0° Bearing [Mag]: 246.0° to 289.0°			Distance: Beyond 28.0 NM Altitude: Below 2500.0 ft		
Restriction:		Bearing [True]: 246.0° to 289.0° Bearing [Mag]: 246.0° to 289.0°			Distance: Beyond 17.0 NM Altitude: Below 2000.0 ft		
Restriction:		Bearing [True]: 66.0° to 84.0° Bearing [Mag]: 66.0° to 84.0°			Distance: Beyond 0.0 NM Altitude: Below 99999.0 ft		
Restriction:		Bearing [True]: 66.0° to 84.0° Bearing [Mag]: 66.0° to 84.0°			Distance: Beyond 0.0 NM Altitude: Below 99999.0 ft		
Restriction:		Bearing [True]: 246.0° to 289.0° Bearing [Mag]: 246.0° to 289.0°			Distance: Beyond 28.0 NM Altitude: Below 2500.0 ft		
Restriction:		Bearing [True]: 246.0° to 289.0° Bearing [Mag]: 246.0° to 289.0°			Distance: Beyond 17.0 NM Altitude: Below 2000.0 ft		
ESV:		Bearing [True]: 300.0° to 60.0° Bearing [Mag]: 300.0° to 60.0°			Arc Distance: Out to 150.0 NM Altitude: 18000.0 to 45000.0 ft		
11	AMG	N 31° 32' 11.60" W 82° 30' 29.12" 00 E	H	193.5	115.10	AMG	Used
Restriction:		Bearing [True]: 360.0° to 360.0° Bearing [Mag]: 360.0° to 360.0°			Distance: Beyond 0.0 NM Altitude: Below 3000.0 ft		
ESV:		Bearing [True]: 5.0° to 170.0° Bearing [Mag]: 5.0° to 170.0°			Arc Distance: Out to 155.0 NM Altitude: 18000.0 to 45000.0 ft		



<b>Name:</b>	MARK SCHOENHOFF
<b>Project Name:</b>	ACR
<b>Output File:</b>	Q97_SOUTH Q-ROUTE ELLDE TOVAR 20180407_1621
<b>Procedure Name:</b>	Q97
<b>Software:</b>	RNAV-Pro™
<b>Version:</b>	2.39g
<b>Date/Time:</b>	4/7/2018 4:23:01 PM
<b>Input File:</b>	<a href="#">Q97_SOUTH ELLDE TOVAR 20180407_1349.txt</a>
<b>Databases:</b>	AIRNAV Date: 4/6/2018 CIFP Date: 11/9/2017 DTED® (MAX) Date: 2002

## Flyability



## DME/DME



### No Critical DMEs Exist

## Radars

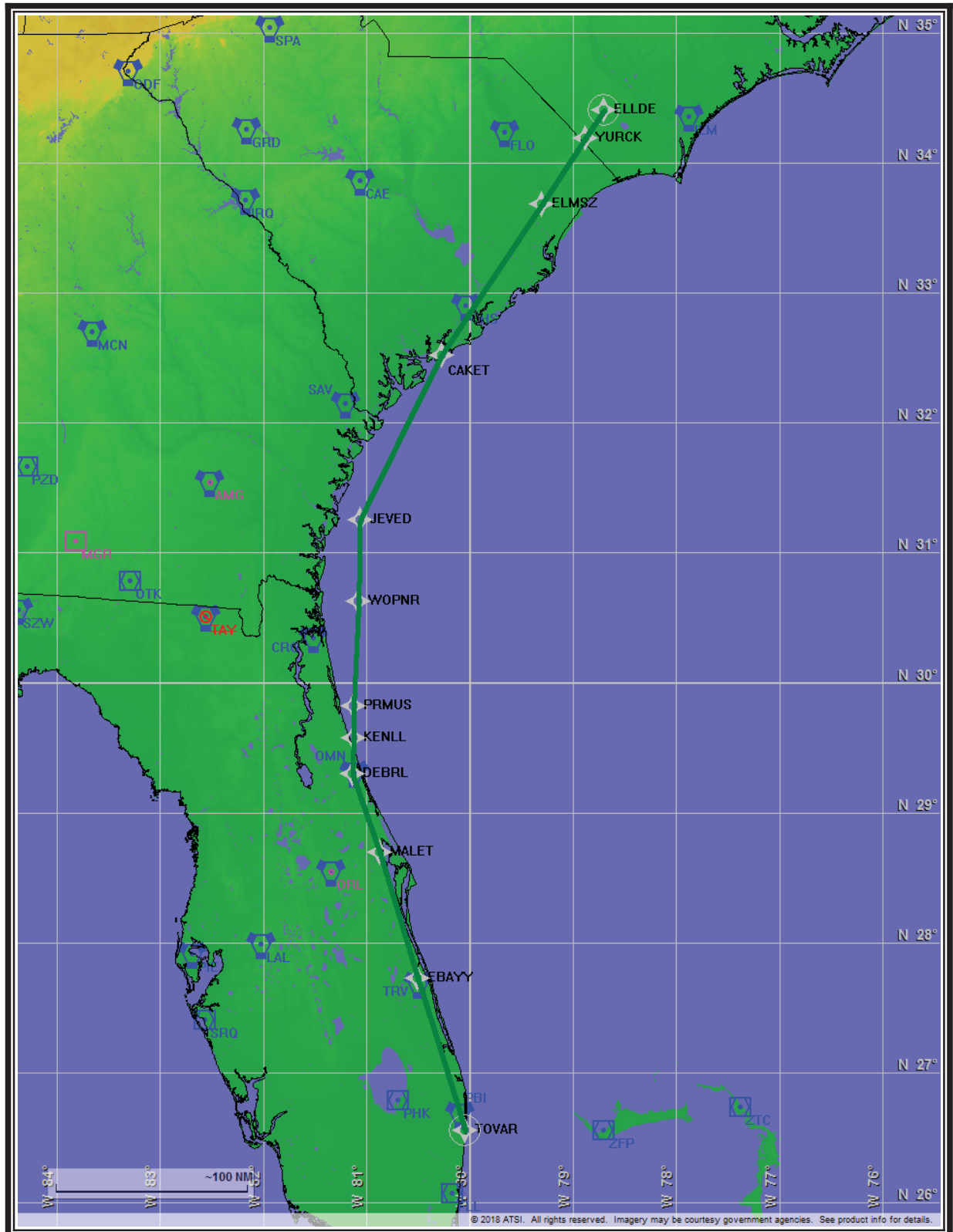


## Comms



## TERPS

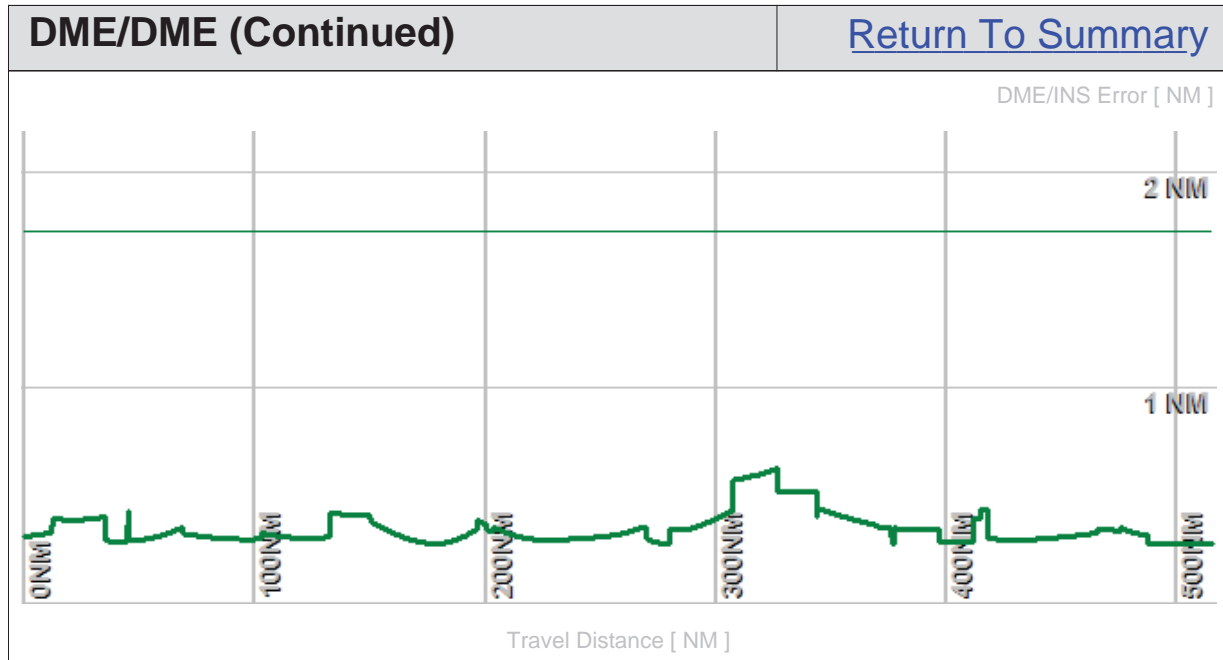




Flight Plan					<a href="#">Return To Summary</a>		
Name	Type	Lat/Lon	Alt [ft]	VNAV Mode	IAS [Kts]	Turn Type	Leg Type
ELLDE	WP	N 34° 24' 14.57" W 78° 41' 50.60"	18000.0	Step	240.0	Fly By	TF
YURCK	WP	N 34° 11' 14.80" W 78° 52' 40.62"	18000.0	Step	240.0	Fly By	TF
ELMSZ	WP	N 33° 40' 36.61" W 79° 17' 59.56"	18000.0	Step	240.0	Fly By	TF
CAKET	WP	N 32° 31' 8.63" W 80° 16' 9.21"	18000.0	Step	240.0	Fly By	TF
JEVED	WP	N 31° 15' 2.60" W 81° 3' 40.14"	18000.0	Step	240.0	Fly By	TF
WOPNR	WP	N 30° 37' 36.03" W 81° 4' 26.44"	18000.0	Step	240.0	Fly By	TF
PRMUS	WP	N 29° 49' 5.67" W 81° 7' 20.74"	18000.0	Step	240.0	Fly By	TF
KENLL	WP	N 29° 34' 28.35" W 81° 7' 25.26"	18000.0	Step	240.0	Fly By	TF
DEBRL	WP	N 29° 17' 48.73" W 81° 8' 2.88"	18000.0	Step	240.0	Fly By	TF
MALET	WP	N 28° 41' 29.90" W 80° 52' 4.30"	18000.0	Step	240.0	Fly By	TF
EBAYY	WP	N 27° 43' 40.20" W 80° 30' 3.59"	18000.0	Step	240.0	Fly By	TF
TOVAR	WP	N 26° 33' 5.09" W 80° 2' 19.75"	18000.0	Step	240.0	Fly Over	TF

Flyability		<a href="#">Return To Summary</a>
Settings:	<b>Flight Type:</b> EnRoute <b>Aircraft Category:</b> Cat D <b>Climb Gradient:</b> <i>None assigned</i> <b>Ground Speeds:</b> Table: <b>200.0 Kts</b> up to <b>11000.0 ft</b> <b>240.0 Kts</b> up to <b>18000.0 ft</b> <b>260.0 Kts</b> up to <b>24000.0 ft</b> <b>340.0 Kts</b> up to <b>99900.0 ft</b>  <b>Wind Settings:</b> <i>None assigned</i> <b>Descent During a Turn:</b> Allowed <b>VNAV Mode:</b> Flight Plan	
	Entire track is fly-able	

DME/DME		<a href="#">Return To Summary</a>
Settings:	RNP: 2.0	
	Flight Mode: Manual	
	Line of Sight (DTED Level 0 Max): Evaluated	
	DME Restrictions: Evaluated	
	Inertial Drift: Enabled	
	Initial Drift: 0.558 NM	
	INS Drift Rate: 8.000 NM/Hour	
	Range Mode: OSV	
	Co-Frequencies: Evaluated	
	RNP Edges: Evaluated	
	Min DME Range: 3.0 NM	
	Allowed Gap Length: 4.0 NM	
	DME Types: VOR/DME, VORTAC, Standalone, and User	
	DME Include Angles: 30 to 150	
	Critical DMEs: Not allowed	
	DoD Facilities: Not included	
	Foreign Facilities: Not included	
	Low DMEs: Not included	
Terminal DMEs: Not included		
Flight Check DMEs: Selected		
Higher Altitudes: Evaluated		
Near Maximum Altitude: Evaluated		
Total Number of DMEs Used: 20		
Maximum DME Error: 0.628 NM.		
No Critical DMEs were found.		
Available DMEs: RDU, GSO, FLO, ILM, CHS, CAE, SAV, AMG, CRG, ORL, OMN, PIE, LAL, TRV, PHK, PBI, FLL, DHP, ZBV, VKZ		
Disabled DMEs: TAY		
Foreign DMEs within range: I-ZFP, ZFP, ZTC, I-ZQA, ZQA, ZGV		



DME/DME (Continued)						<a href="#">Return To Summary</a>			
DMEs Used									
#	Name	Lat/Lon/MAGVAR	Range	Source	Critical	Err. [NM]	Status	Time	Distance
1	RDU	N 35° 52' 21.08" W 78° 47' 0.03" 04 W	H + <a href="#">ESV</a>	User	NO	0.628	Enabled	2.3%	2.3%
2	ILM	N 34° 21' 5.93" W 77° 52' 27.77" 07 W	H	Database	NO	0.628	Enabled	10.5%	10.5%
3	FLO	N 34° 13' 58.69" W 79° 39' 25.78" 03 W	H	Database	NO	0.628	Enabled	7.2%	7.2%
4	GSO	N 36° 2' 44.49" W 79° 58' 34.95" 03 W	H + <a href="#">ESV</a>	User	NO	0.628	Enabled	4.5%	4.5%
5	CHS	N 32° 53' 39.55" W 80° 2' 16.13" 05 W	H	Database	NO	1.093	Enabled	17.7%	17.7%
6	CAE	N 33° 51' 26.10" W 81° 3' 14.05" 02 W	H	Database	NO	1.057	Enabled	15.9%	15.9%
7	SAV	N 32° 8' 46.56" W 81° 11' 56.78" 06 W	H	Database	NO	0.628	Enabled	15.9%	15.9%
8	AMG	N 31° 32' 11.60" W 82° 30' 29.12" 00 E	H + <a href="#">ESV</a>	User	NO	1.301	Enabled	24.1%	24.1%
9	CRG	N 30° 20' 19.97" W 81° 30' 35.74" 03 W	H	Database	NO	0.628	Enabled	20.9%	20.9%
10	OMN	N 29° 18' 11.71" W 81° 6' 45.71" 00 E	H	Database	NO	0.628	Enabled	6.9%	6.9%
11	ORL	N 28° 32' 33.81" W 81° 20' 6.07" 00 E	H + <a href="#">ESV</a>	User	NO	1.193	Enabled	11.3%	11.3%
12	PIE	N 27° 54' 27.95" W 82° 41' 3.51" 05 W	H	Database	NO	0.669	Enabled	13.9%	13.9%
13	TRV	N 27° 40' 42.33" W 80° 29' 23.01" 07 W	H	Database	NO	0.628	Enabled	9.3%	9.3%
14	LAL	N 27° 59' 10.25" W 82° 0' 50.01" 01 E	H	Database	NO	0.628	Enabled	12.8%	12.8%
15	FLL	N 26° 4' 26.20" W 80° 9' 59.19" 06 W	H	Database	NO	0.628	Enabled	2.2%	2.2%

DME/DME (Continued)						<a href="#">Return To Summary</a>			
DMEs Used (Continued)									
#	Name	Lat/Lon/MAGVAR	Range	Source	Critical	Err. [NM]	Status	Time	Distance
16	PHK	N 26° 46' 57.87" W 80° 41' 29.16" 00 E	H	Database	NO	0.645	Enabled	18.9%	18.9%
17	ZBV	N 25° 42' 15.00" W 79° 17' 40.00" 04 W	H	User	NO	0.628	Enabled	2.2%	2.2%
18	PBI	N 26° 40' 48.20" W 80° 5' 11.36" 03 W	H	Database	NO	0.628	Enabled	0.5%	0.5%
19	VKZ	N 25° 45' 6.84" W 80° 9' 15.99" 04 W	H	Database	NO	0.628	Enabled	1.3%	1.3%
20	DHP	N 25° 47' 59.86" W 80° 20' 56.53" 04 W	H	Database	NO	0.628	Enabled	1.6%	1.6%
	Total Coverage							100.0%	100.0%
Flight Check DME Selection									
Distance [NM]		Selected DMEs (Required)						Alternate	
0.0		RDU	ILM	FLO	GSO	CHS			
15.7		CAE	ILM	FLO	GSO	CHS			
52.8		CAE	ILM	FLO	GSO	CHS			
71.1		CAE	AMG	FLO	SAV	CHS			
137.3		CAE	AMG	CRG	SAV	CHS			
222.9		ORL	AMG	CRG	SAV	OMN			
260.9		ORL	AMG	CRG	SAV	OMN			
309.3		ORL	AMG	CRG	OMN				
324.0		ORL	AMG	CRG	PIE	LAL	OMN		
340.0		ORL	AMG	CRG	PIE	TRV	LAL		
364.7		ORL	OMN	LAL	PIE	TRV	CRG		
379.4		ORL	OMN	LAL	PIE	TRV	PHK		
399.6		PHK	OMN	LAL	PIE	TRV	ORL		
409.7		PHK	FLL	LAL	PIE	TRV	ORL		
419.8		PHK	FLL	LAL	PIE	DHP	ORL		
430.1		PHK	FLL	LAL	PIE	ORL	DHP		
440.3		PHK	TRV	LAL	PIE	ORL	DHP		

DME/DME (Continued)						<a href="#">Return To Summary</a>
<i>Flight Check DME Selection (Continued)</i>						
Distance [NM]	Selected DMEs (Required)					Alternate
450.5	PHK	VKZ	LAL	DHP	ORL	ZBV
475.3	PHK	ZBV	PBI	DHP	TRV	VKZ
495.2	PHK	ZBV	FLL	DHP	VKZ	TRV

Available DMEs by Waypoints		<a href="#">Return To Summary</a>
Waypoint Before	Waypoint After	DME List
ELLDE	YURCK	GSO, RDU, CHS, FLO, and ILM
YURCK	ELMSZ	GSO, CAE, CHS, FLO, and ILM
ELMSZ	CAKET	AMG, GSO, CAE, CHS, FLO, ILM, and SAV
CAKET	JEVED	AMG, CAE, CHS, CRG, and SAV
JEVED	WOPNR	AMG, ORL, CRG, OMN, and SAV
WOPNR	PRMUS	AMG, ORL, CRG, OMN, and SAV
PRMUS	KENLL	AMG, ORL, CRG, and OMN
KENLL	DEBRL	AMG, ORL, CRG, LAL, PIE, and OMN*
DEBRL	MALET	AMG, ORL, CRG, LAL, OMN, PIE, and TRV
MALET	EBAYY	ORL, DHP, FLL, LAL, OMN, PHK, PIE, TRV, and PBI*
EBAYY	TOVAR	ORL, ZBV, DHP, FLL, LAL, PBI, PHK, PIE, TRV, VKZ, and OMN*

User Data					<a href="#">Return To Summary</a>		
User Data Files							
#	File Name						
1	Q97.udt						
User DMEs							
#	Name	Lat/Lon/MAGVAR	Range	Elevation [ft]	Frequency	Replaces	Status
1	EYW	N 24° 35' 9.16" W 81° 48' 1.71" 01 E	H	10.0	113.50	EYW	Not Used
Restriction:		Bearing [True]: 124.0° to 134.0° Bearing [Mag]: 123.0° to 133.0°			Distance: Beyond 20.0 NM Altitude: Below 99999.0 ft		
ESV:		Bearing [True]: 77.0° to 105.0° Bearing [Mag]: 76.0° to 104.0°			Arc Distance: Out to 158.0 NM Altitude: 17100.0 to 45000.0 ft		
2	RDU	N 35° 52' 21.08" W 78° 47' 0.03" 04 W	H	429.2	117.20	RDU	Used
ESV:		Bearing [True]: 51.0° to 76.0° Bearing [Mag]: 55.0° to 80.0°			Arc Distance: Out to 160.0 NM Altitude: 18000.0 to 45000.0 ft		
3	RIC	N 37° 30' 8.46" W 77° 19' 13.00" 09 W	H	158.1	114.10	RIC	Not Used
Restriction:		Bearing [True]: 51.0° to 66.0° Bearing [Mag]: 60.0° to 75.0°			Distance: Beyond 10.0 NM Altitude: Below 1700.0 ft		
Restriction:		Bearing [True]: 51.0° to 66.0° Bearing [Mag]: 60.0° to 75.0°			Distance: Beyond 10.0 NM Altitude: Below 1700.0 ft		
ESV:		Bearing [True]: 21.0° to 241.0° Bearing [Mag]: 30.0° to 250.0°			Arc Distance: Out to 160.0 NM Altitude: 18000.0 to 45000.0 ft		
4	GSO	N 36° 2' 44.49" W 79° 58' 34.95" 03 W	H	909.0	116.20	GSO	Used
ESV:		Bearing [True]: 77.0° to 177.0° Bearing [Mag]: 80.0° to 180.0°			Arc Distance: Out to 160.0 NM Altitude: 18000.0 to 45000.0 ft		
5	EMI	N 39° 29' 42.03" W 76° 58' 42.86" 08 W	H	820.0	117.90	EMI	Not Used
Restriction:		Bearing [True]: 273.0° to 47.0° Bearing [Mag]: 281.0° to 55.0°			Distance: Beyond 35.0 NM Altitude: Below 3000.0 ft		
ESV:		Bearing [True]: 47.0° to 222.0° Bearing [Mag]: 55.0° to 230.0°			Arc Distance: Out to 160.0 NM Altitude: 18000.0 to 45000.0 ft		
6	LFV	N 42° 1' 1.88" W 70° 2' 14.04" 16 W	H	150.8	114.70	LFV	Not Used
ESV:		Bearing [True]: 224.0° to 14.0° Bearing [Mag]: 240.0° to 30.0°			Arc Distance: Out to 160.0 NM Altitude: 18000.0 to 45000.0 ft		
7	BGR	N 44° 50' 30.46" W 68° 52' 26.28" 19 W	H	360.1	114.80	BGR	Not Used
ESV:		Bearing [True]: 201.0° to 31.0° Bearing [Mag]: 220.0° to 50.0°			Arc Distance: Out to 160.0 NM Altitude: 18000.0 to 45000.0 ft		

User Data (Continued)					<a href="#">Return To Summary</a>		
User DMEs (Continued)							
#	Name	Lat/Lon/MAGVAR	Range	Elevation [ft]	Frequency	Replaces	Status
8	MLT	N 45° 35' 12.15" W 68° 30' 55.67" 20 W	H	553.2	117.90	MLT	Not Used
Restriction:		Bearing [True]: 310.0° to 330.0° Bearing [Mag]: 330.0° to 350.0°			Distance: Beyond 35.0 NM Altitude: Below 6000.0 ft		
ESV:		Bearing [True]: 200.0° to 20.0° Bearing [Mag]: 220.0° to 40.0°			Arc Distance: Out to 160.0 NM Altitude: 18000.0 to 45000.0 ft		
9	ZBV	N 25° 42' 15.00" W 79° 17' 40.00" 04 W	H	10.0	110.31	ZBV	Used
10	ORL	N 28° 32' 33.81" W 81° 20' 6.07" 00 E	H	101.7	112.20	ORL	Used
Restriction:		Bearing [True]: 246.0° to 289.0° Bearing [Mag]: 246.0° to 289.0°			Distance: Beyond 28.0 NM Altitude: Below 2500.0 ft		
Restriction:		Bearing [True]: 246.0° to 289.0° Bearing [Mag]: 246.0° to 289.0°			Distance: Beyond 17.0 NM Altitude: Below 2000.0 ft		
Restriction:		Bearing [True]: 66.0° to 84.0° Bearing [Mag]: 66.0° to 84.0°			Distance: Beyond 0.0 NM Altitude: Below 99999.0 ft		
Restriction:		Bearing [True]: 66.0° to 84.0° Bearing [Mag]: 66.0° to 84.0°			Distance: Beyond 0.0 NM Altitude: Below 99999.0 ft		
Restriction:		Bearing [True]: 246.0° to 289.0° Bearing [Mag]: 246.0° to 289.0°			Distance: Beyond 28.0 NM Altitude: Below 2500.0 ft		
Restriction:		Bearing [True]: 246.0° to 289.0° Bearing [Mag]: 246.0° to 289.0°			Distance: Beyond 17.0 NM Altitude: Below 2000.0 ft		
ESV:		Bearing [True]: 300.0° to 60.0° Bearing [Mag]: 300.0° to 60.0°			Arc Distance: Out to 150.0 NM Altitude: 18000.0 to 45000.0 ft		
11	AMG	N 31° 32' 11.60" W 82° 30' 29.12" 00 E	H	193.5	115.10	AMG	Used
Restriction:		Bearing [True]: 360.0° to 360.0° Bearing [Mag]: 360.0° to 360.0°			Distance: Beyond 0.0 NM Altitude: Below 3000.0 ft		
ESV:		Bearing [True]: 5.0° to 170.0° Bearing [Mag]: 5.0° to 170.0°			Arc Distance: Out to 155.0 NM Altitude: 18000.0 to 45000.0 ft		