



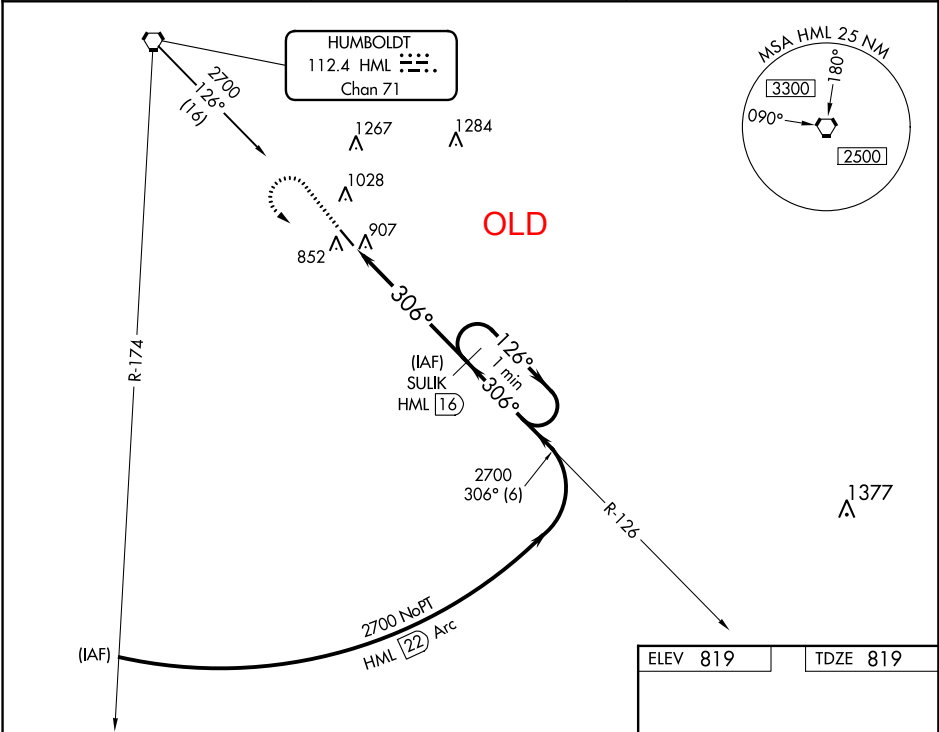
<b>Flight Procedure Tracking Form</b>		<b>Action:</b> FLIGHT CHECK	<b>Task Type:</b> IAP	<b>Date Open:</b> 04/24/2018	<b>Task #:</b> 2018042435635001003	<b>Request #:</b> 20180424356350
<b>Procedure:</b> VOR/DME RWY 31 AMDT 7A			<b>Airport ID:</b> KHCO	<b>Airport:</b> HALLOCK MUNI		<b>Reimbursable #:</b> NO
<b>City:</b> HALLOCK	<b>ST:</b> MN	<b>GPS #:</b>	<b>Estimated Chart Date:</b> 01/03/2019		<b>FICO #:</b>	
<b>Fac ID:</b> HML		<b>Fac. Type:</b> VORTAC			<b>Specialist:</b> JOHN THORNTON	
<b>Procedure Review</b>						
	<b>Rec'd</b>	<b>Rel'd</b>	<b>Full Name</b>	<b>Comments</b>		
<b>Lead:</b>	06/04/2018			<div> <div>QUALITY</div> <div>9.11.2018</div> <div>BD</div> </div> Digitally signed by		
<b>QA:</b>				<div>22</div> <div>MARK D ADAMS</div>		
<b>Liaison:</b>				<div>CHECKED</div> <div>Nov 26, 2018</div>		
<b>Procedure Comments:</b> ENROUTE-NON <b>Remark Type:</b> INFORMATION  FLIGHT INSPECTION REVIEW NOT REQUIRED - PROCESSED IAW AIRCRAFT OPERATIONS GROUP (AJW-33) MEMO, DEC 22, 2017.  PENDING DATA USED FOR RWY 13/31 VGSI'S: TCH CHANGED FROM 28.0 TO 42.3.  CONTACT MANAGER DEZ SILAGYI, AJV-5421, 405.954.5340						

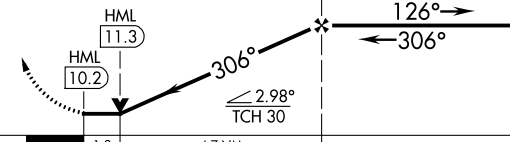
VORTAC HML	APP CRS	Rwy Idg	4007
112.4	306°	TDZE	819
Chan 71		Apt Elev	819

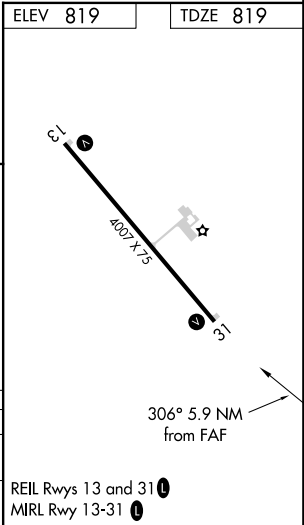
VOR/DME RWY 31  
HALLOCK MUNI (HCO)

 NA	MISSED APPROACH: Climb to 2000 then climbing left turn to 2700 via HML R-126 to SULIK and hold.
--	---

AWOS-3 126.475	MINNEAPOLIS CENTER 132.15 269.6	UNICOM 122.8 (CTAF) 
-------------------	------------------------------------	--



2000 ↑	2700 HML R-126	SULIK HML 16	SULIK HML 16 One Minute Holding Pattern	
				
CATEGORY	A	B	C	D
S-31	1220-1	401 (500-1)	1220-1¼	401 (500-1¼)
CIRCLING	1380-1	561 (600-1)	1380-1½ 561 (600-1½)	1380-2 561 (600-2)



NC-1, 19 JUL 2018 to 16 AUG 2018

NC-1, 19 JUL 2018 to 16 AUG 2018