

<b>Flight Procedure Tracking Form</b>		<b>Action:</b> FLIGHT CHECK	<b>Task Type:</b> IAP	<b>Date Open:</b> 04/23/2018	<b>Task #:</b> 2018042331820301003	<b>Request #:</b> 20180423318203
<b>Procedure:</b> RNAV (GPS) RWY 27 AMDT 1B			<b>Airport ID:</b> KPRG	<b>Airport:</b> EDGAR COUNTY		<b>Reimbursable #:</b> NO
<b>City:</b> PARIS	<b>ST:</b> IL	<b>GPS #:</b>	<b>Estimated Chart Date:</b> 01/03/2019		<b>FICO #:</b>	
<b>Fac ID:</b> N/A		<b>Fac. Type:</b>			<b>Specialist:</b> IVAN BLANCO	
<b>Procedure Review</b>						
	<b>Rec'd</b>	<b>Rel'd</b>	<b>Full Name</b>		<b>Comments</b>	
<b>Lead:</b>	06/18/2018					
<b>QA:</b>			J ZEDER 09/10/2018			
<b>Liaison:</b>						
<b>Procedure Comments:</b>			<b>Remark Type:</b> INFORMATION			
<p>ENROUTE-NON</p> <p>ABBREVIATED AMDT TO CLEAR FDC 8/3863.</p> <p>CONTACT ADOLFO URRUTIA: 405.954.2079 TEAM 3 MANAGER: PAT MULQUEEN: 405.954.4073</p>						

WAAS CH <b>61239</b> <b>W27A</b>	APP CRS <b>272°</b>	Rwy Idg TDZE <b>651</b> Apt Elev <b>654</b>
--	------------------------	---

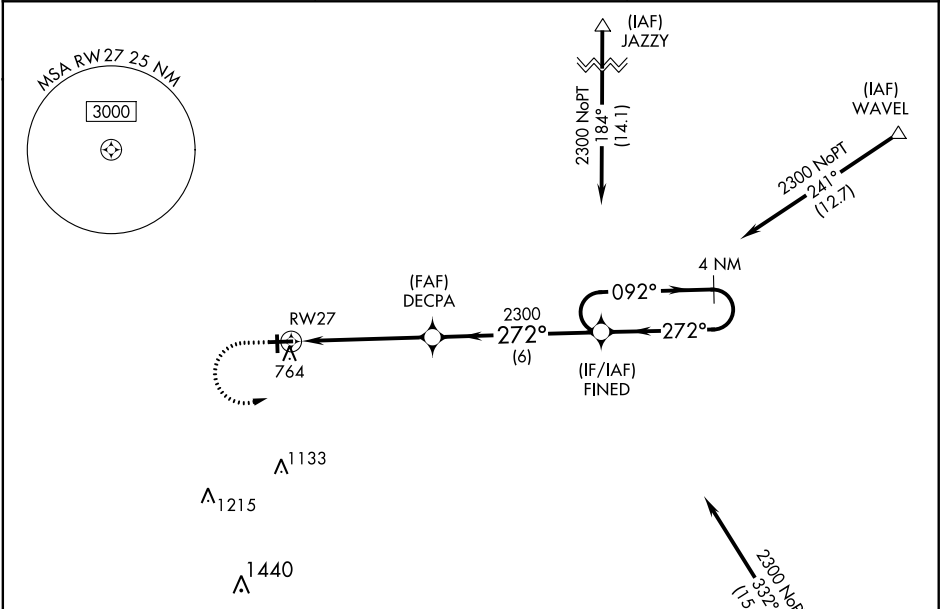
RNAV (GPS) RWY 27  
EDGAR COUNTY (PRG)

**⚠** For uncompensated Baro-VNAV systems, LNAV/VNAV NA below -21°C (-5°F) or above 54°C (130°F). Baro-VNAV and VDP NA when using Terre Haute Intl-Hulman Field altimeter setting.

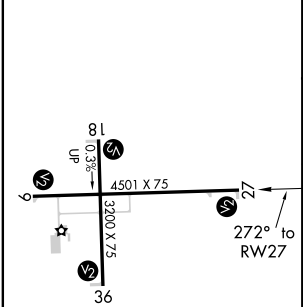
**⚠** Circling Rwy 9, 18 NA at night. DME/DME RNP-0.3 NA. Rwy 27 Helicopter visibility reduction below 3/4 SM NA. When local altimeter setting not received, use Terre Haute Intl-Hulman Field altimeter setting: increase all LPV DA to 962 feet, all LNAV/VNAV DA to 986 and all visibilities to 1 1/8 SM, increase all MDA 80 feet and LNAV Cat C/D visibility to 1 3/8 SM, and Cat D Circling to 2 1/2 SM.

MISSED APPROACH:  
Climb to 1100 then  
climbing left turn to 2300  
direct FINED and hold.

AWOS-3 <b>124.175</b>	HULMAN APP CON <b>125.45 339.8</b>	UNICOM <b>123.0 (CTAF) 0</b>
--------------------------	---------------------------------------	---------------------------------

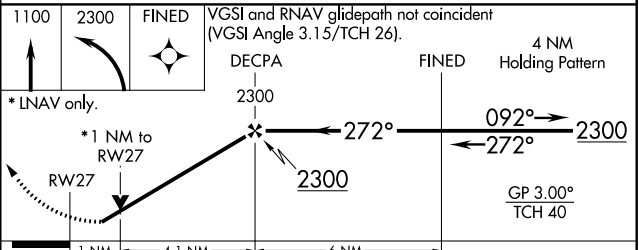


ELEV 654	TDZE 651
----------	----------



Procedure NA for arrivals on TTH VORTAC  
airway radials 254 CW 303.

(IAF) TERRE HAUTE TTH



CATEGORY	A	B	C	D
LPV DA		901-1	250 (300-1)	
LNAV/VNAV DA		925-1	274 (300-1)	
LNAV MDA	1080-1	429 (500-1)	1080-1 1/4	429 (500-1 1/4)
CIRCLING	1080-1 426 (500-1)	1120-1 466 (500-1)	1120-1 1/2 466 (500-1 1/2)	1320-2 666 (700-2)

WAAS CH <b>61239</b> <b>W27A</b>	APP CRS <b>272°</b>	Rwy Idg TDZE <b>651</b> Apt Elev <b>654</b>
--	------------------------	---

RNAV (GPS) RWY 27

EDGAR COUNTY (PRG)

▼

For uncompensated Baro-VNAV systems, LNAV/VNAV NA below -16 °C or above 54°C

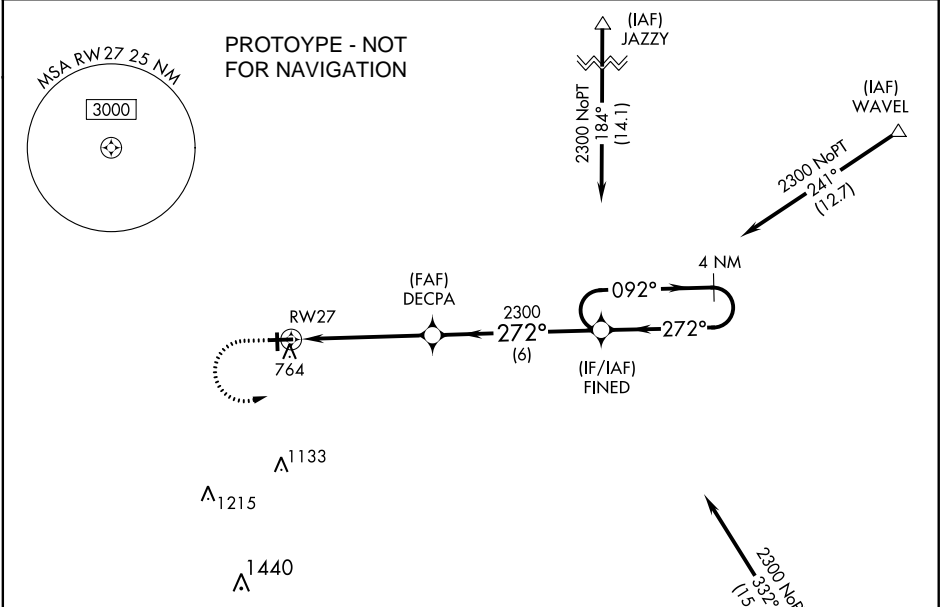
⚠

Circling Rwy 18 NA at night. Rwy 27 Helicopter visibility reduction below 3/4 SM NA.

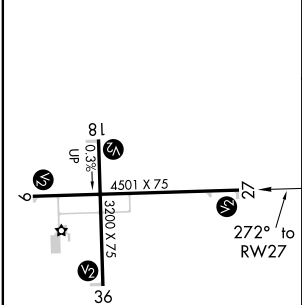
MISSED APPROACH:  
Climb to 1100 then  
climbing left turn to 2300  
direct FINED and hold.

RNP APCH

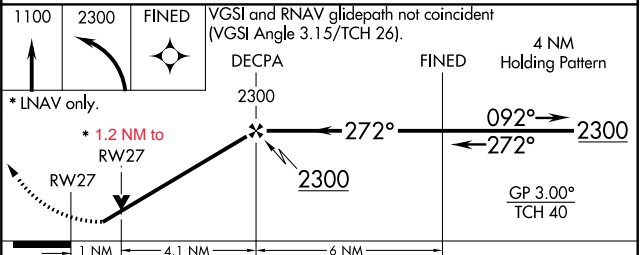
AWOS-3 <b>124.175</b>	HULMAN APP CON <b>125.45 339.8</b>	UNICOM <b>123.0 (CTAF) 0</b>
--------------------------	---------------------------------------	---------------------------------



ELEV <b>654</b>	TDZE <b>651</b>
-----------------	-----------------



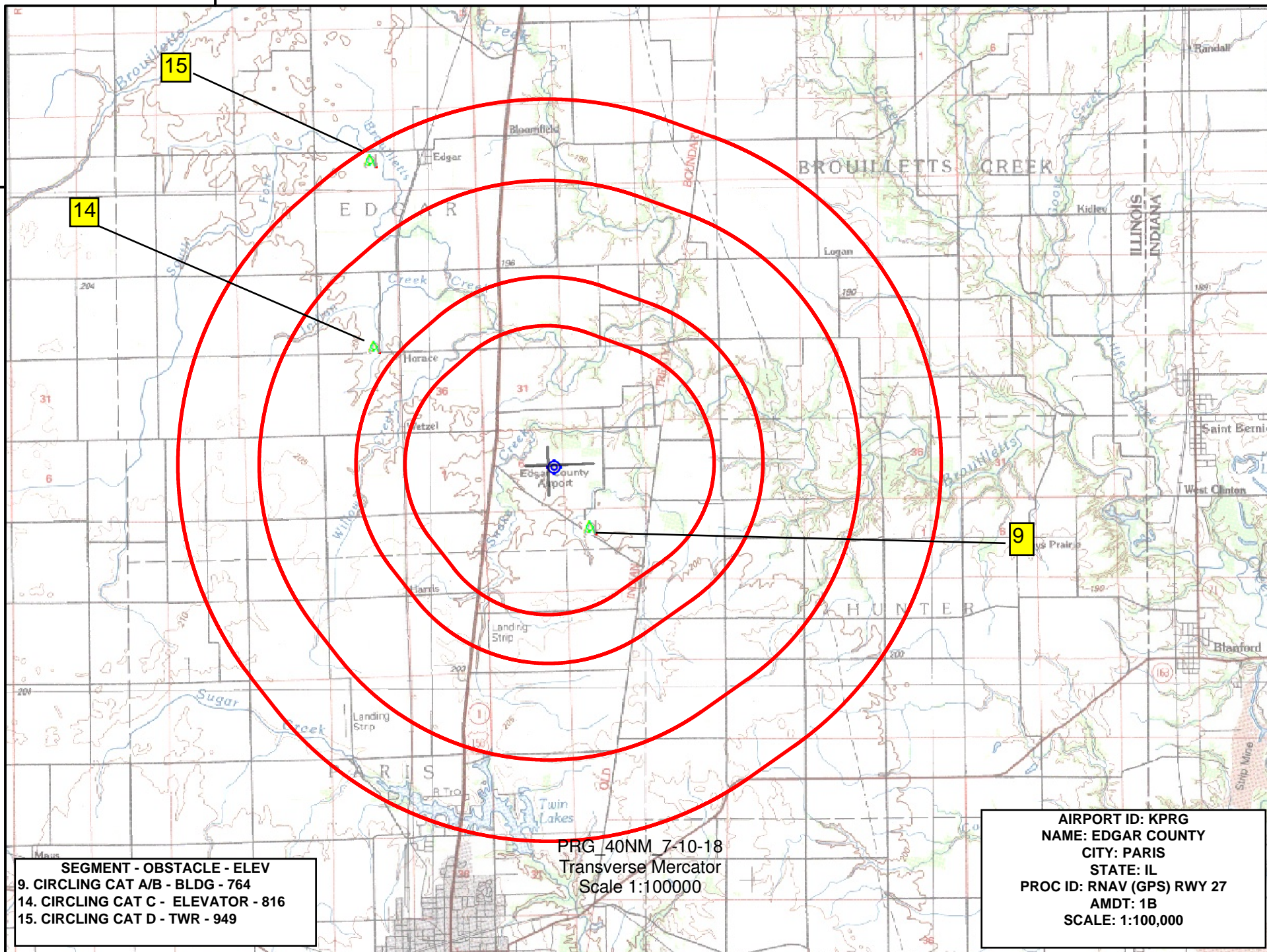
Procedure NA for arrivals on TTH VORTAC  
airway radials 254 CW 303.



CATEGORY	A	B	C	D
LPV DA	901-1	250 (300-1)		
LNAV/VNAV DA	925-1	274 (300-1)		
LNAV MDA	1080-1	429 (500-1)	1080-1¼	429 (500-1¼)
CIRCLING	1080-1 426 (500-1)	1120-1 466 (500-1)	1180-1 1/2 526 (600-1)	1320-2 666 (700-2)

87°45'0"W

39°45'0"N



SEGMENT - OBSTACLE - ELEV  
9. CIRCLING CAT A/B - BLDG - 764  
14. CIRCLING CAT C - ELEVATOR - 816  
15. CIRCLING CAT D - TWR - 949

PRG\_40NM\_7-10-18  
Transverse Mercator  
Scale 1:100000

AIRPORT ID: KPRG  
NAME: EDGAR COUNTY  
CITY: PARIS  
STATE: IL  
PROC ID: RNAV (GPS) RWY 27  
AMDT: 1B  
SCALE: 1:100,000