

| | | | | | | |
|---|---------------|-----------------------------|---|---|---------------------------------------|-------------------------------------|
| Flight Procedure Tracking Form | | Action: AMENDMENT | Task Type: IAP | Date Open: 03/29/2018 | Task #: 2018032927624601001 | Request #: 20180329276246 |
| Procedure: RNAV (GPS)-A AMDT 1 | | | Airport ID: KMVL | Airport: MORRISVILLE-STOWE STATE | | Reimbursable #: NO |
| City: MORRISVILLE | ST: VT | GPS #: | Estimated Chart Date: 06/20/2019 | | FICO #: | |
| Fac ID: N/A | | Fac. Type: | | | Specialist: IVAN BLANCO | |
| Procedure Review | | | | | | |
| | Rec'd | Rel'd | Full Name | | Comments | |
| Lead: | 10/31/2018 | | | | | |
| QA: | | | J ZEDER 02/22/2019 16 | | | |
| Liaison: | | | | | | |
| Procedure Comments: | | | Remark Type: INFORMATION | | | |
| <p>AMDT TO ADD ARRIVAL HOLDING.</p> <p>CONTACT GEORGE DAVIS: 405.954.9960</p> | | | | | | |

MORRISVILLE, VERMONT

AL-5405 (FAA)

FIG

| | | |
|---------|----------|-----|
| APP CRS | Rwy Idg | N/A |
| 051° | TDZE | N/A |
| | Apt Elev | 733 |

RNAV (GPS)-A
MORRISVILLE-STOWE STATE (MVL)

RNP APCH



Circling NA for Cat C east of Rwy 1-19. When local altimeter setting not received, use Burlington altimeter setting and increase all MDAs 120 feet.

MISSED APPROACH: Climbing left turn to 5600 direct LIQED and hold, continue climb-in-hold to 5600.

ASOS
135.625

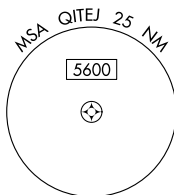
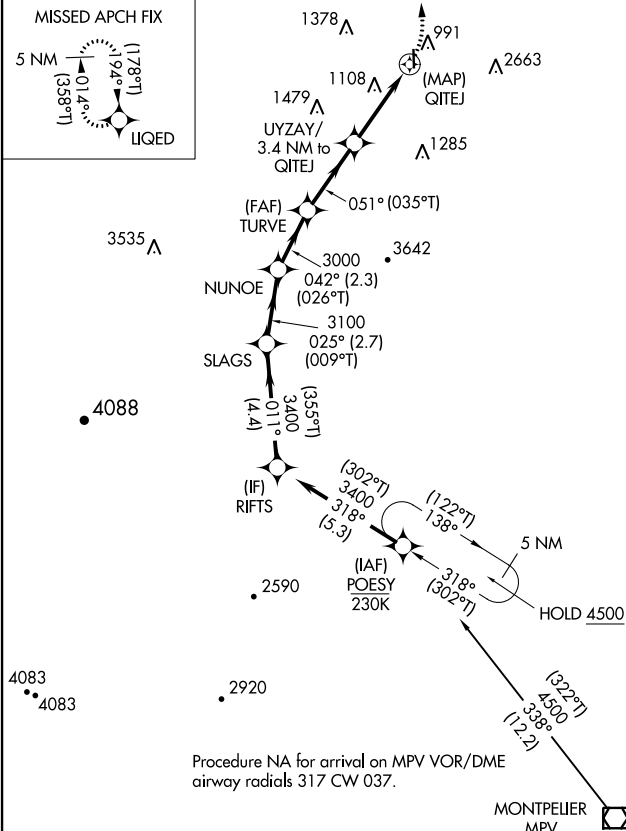
BOSTON CENTER
135.7 282.2

UNICOM
122.8 (CTAF) **L**

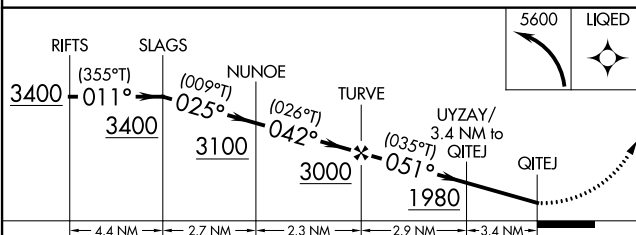
MISSED APCH FIX




PROTOTYPE-NOT
FOR NAVIGATION



ELEV 733



| CATEGORY | A | B | C | D |
|---|-------------------------|---------------------------|-------------------------|----|
|  CIRCULING | 1620-1¼ 887 (900-1¼) | 1780-1½ 1047 (1100-1½) | 1980-3 1247 (1300-3) | NA |

REIL Rwy 1 and 19 **L**
HIRL Rwy 1-19 **L**

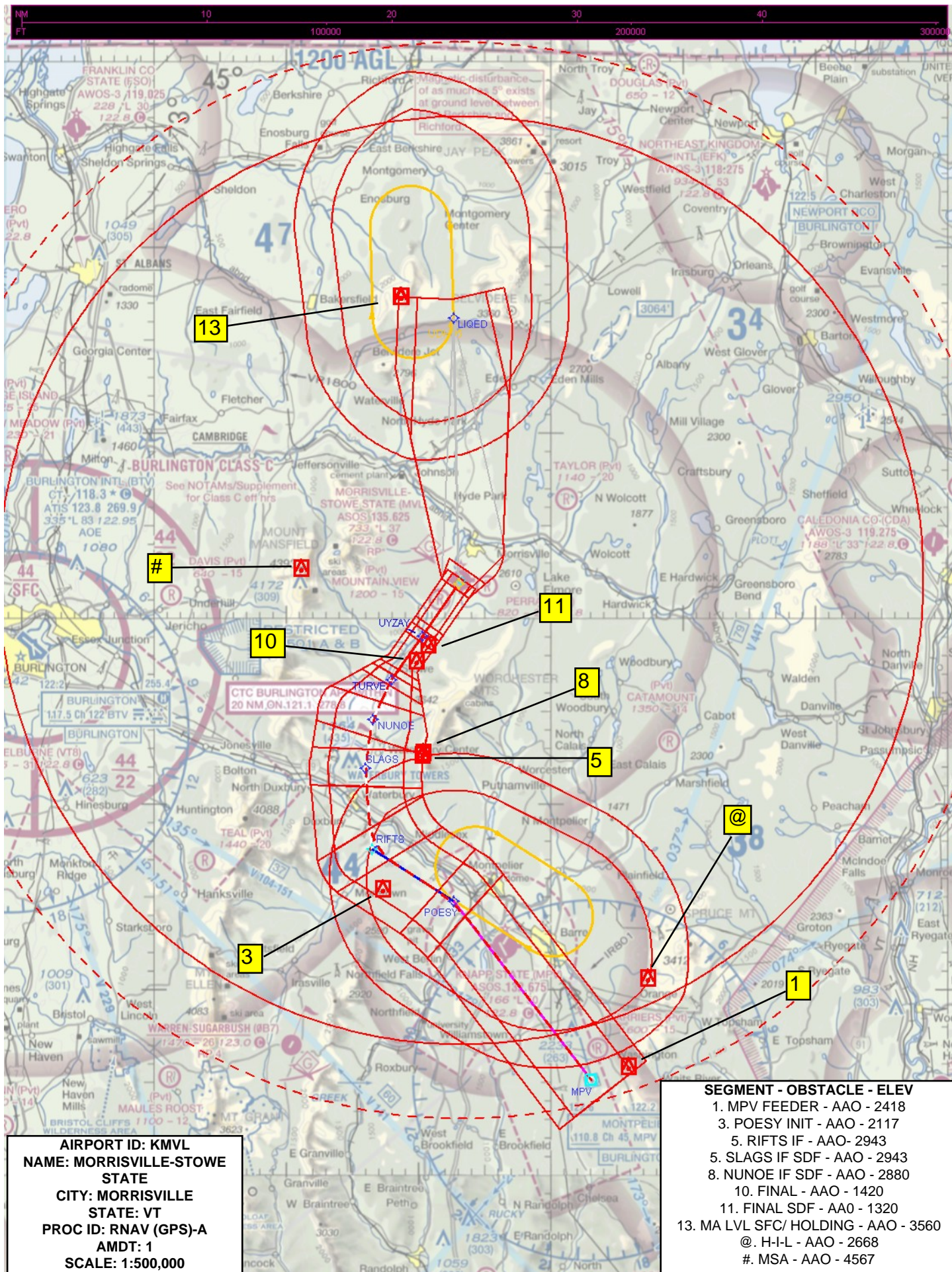
MORRISVILLE, VERMONT

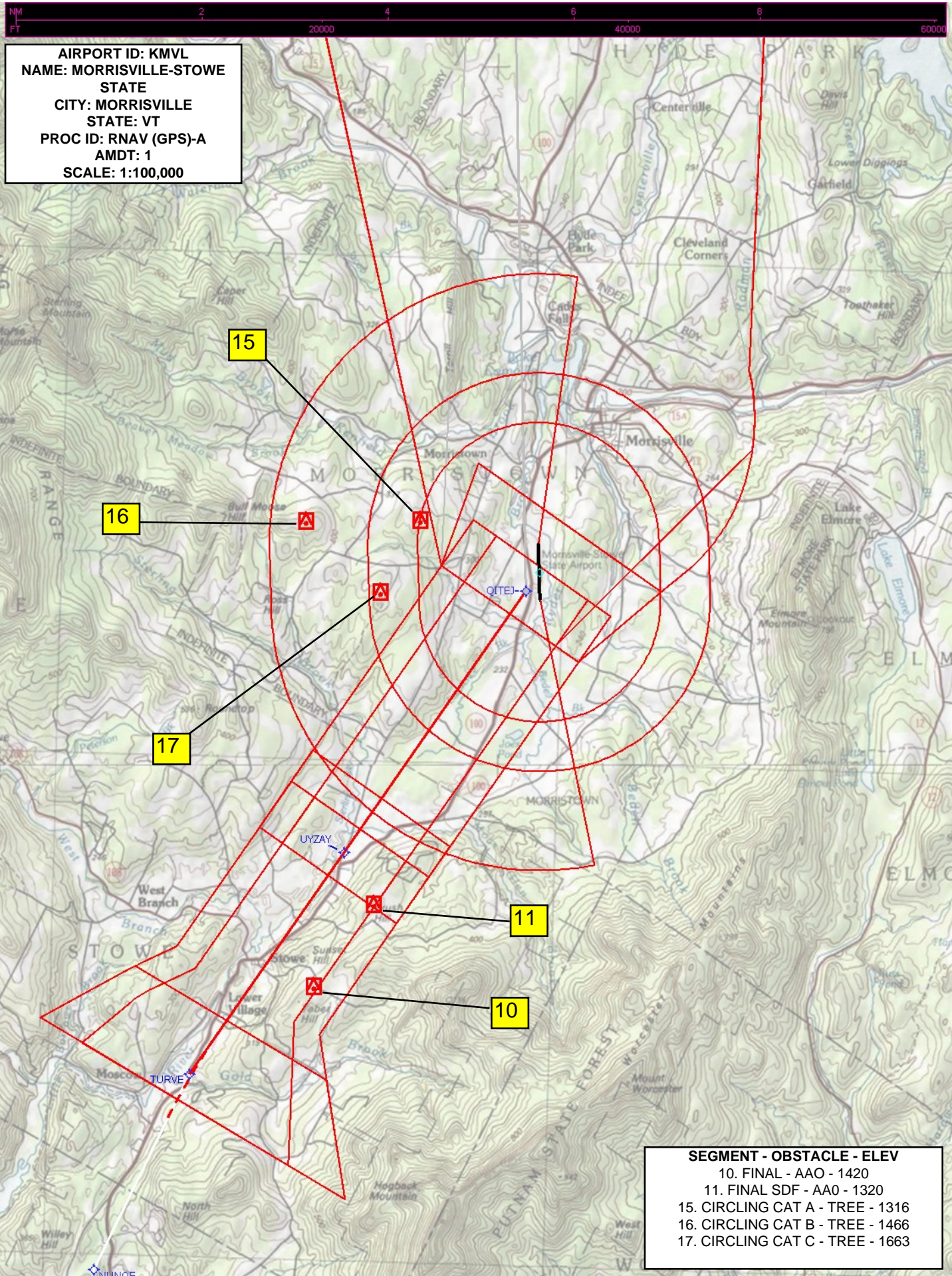
Amdt 1 FIG

MORRISVILLE-STOWE STATE (MVL)

RNAV (GPS)-A

44°32'N-72°37'W





Federal Aviation Administration Categorical Exclusion Declaration

Date: 09/26/2018
IFP: Malone, TeVar (Tevar.CTR.Malone@faa.gov)
Airport Contact: N/A
Request ID: KMVL_180925_03
Single or Multiple Procedure:
Single
Procedure Name(s):

RNAV (GPS)-A

Procedure Request Description:

Amendment of current procedure to create a Procedure Turn at POESY waypoint. POESY is currently the initial approach fix of the procedure .

Declaration of Exclusion:

The FAA has reviewed the above referenced proposed action and it has been determined, by the undersigned, to be categorically excluded from further environmental documentation according to FAA Order 1050.1, "Environmental Impacts: Policies and Procedures." The implementation of this action will not result in any extraordinary circumstances in accordance with FAA Order 1050.1.

Basis for this Determination:

This review was conducted in accordance with policies and procedures in Department of Transportation Order 5610.1, "Procedures for Considering Environmental Impacts" and FAA Order 1050.1.

The applicable Categorical Exclusion is:

5- Publication of existing air traffic control procedures that do not essentially change existing tracks, create new **6.5.k:** tracks, change altitude, or change concentration of aircraft on these tracks. (ATO, AVS)

| | |
|--|--------------------------|
| The above flight procedure has been developed within the accepted parameters. | |
| Concurrence/Reviewed By: <i>Veronda Johnson</i> Title: Environmental Protection Specialist | Date: September 27, 2018 |
| Approved By: <i>Debra L Hogan</i> Title: Manager, Airspace Environmental & Community Outreach | Date: September 27, 2018 |