
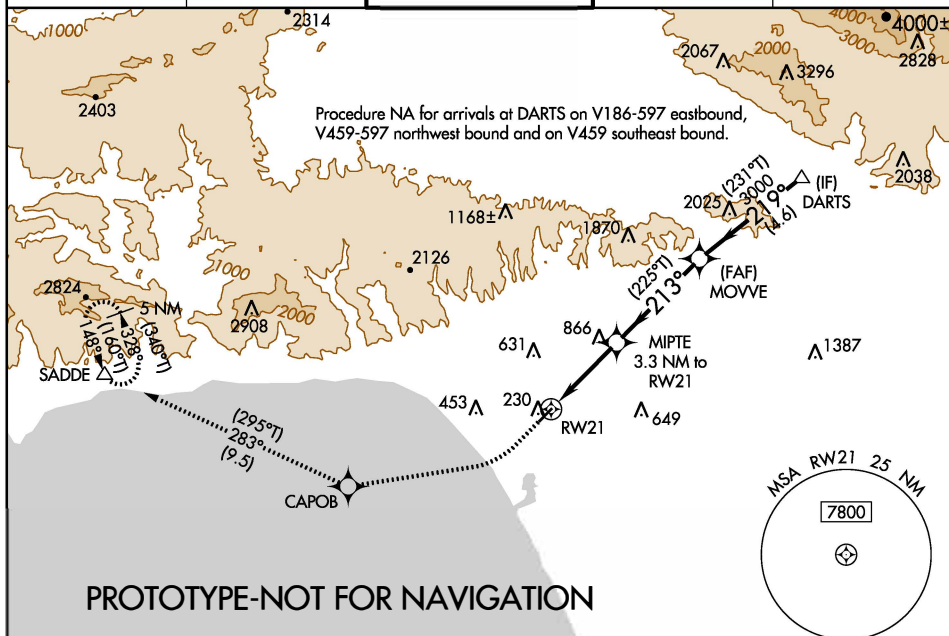


Flight Procedure Tracking Form		Action: AMENDMENT	Task Type: IAP	Date Open: 03/02/2018	Task #: 2018030231412201001	Request #: 20180302314122
Procedure: RNAV (GPS) RWY 21 AMDT 1B			Airport ID: KSMO	Airport: SANTA MONICA MUNI		Reimbursable #: NO
City: SANTA MONICA	ST: CA	GPS #:	Estimated Chart Date: 04/26/2018		FICO #:	
Fac ID: N/A		Fac. Type:		Specialist: JIMMY HUGHES		
Procedure Review						
	Rec'd	Rel'd	Full Name	Comments		
Lead:	03/02/2018			 Digitally signed by		
QA:				19 JON DENTON		
Liaison:				Mar 15, 2018		
Procedure Comments:			ENROUTE-NON Remark Type: INFORMATION			
CONTACT: ROBERT HAMILTON, IFP TEAM 2 LEAD, 405-954-8568 FLIGHT INSPECTION NOT REQUIRED - PROCESSED IAW FLIGHT INSPECTION TEAM (AJW-333) MEMO DATED DEC 22, 2017						

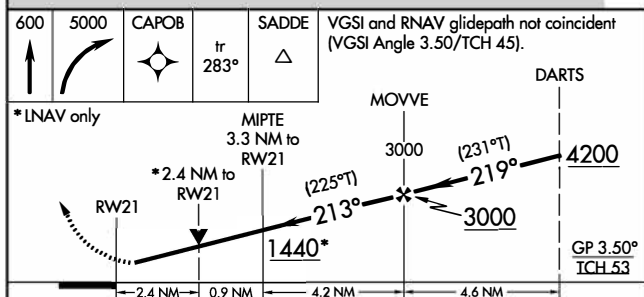
FIG

RNAV (GPS) RWY 21
SANTA MONICA MUNI (SMO)

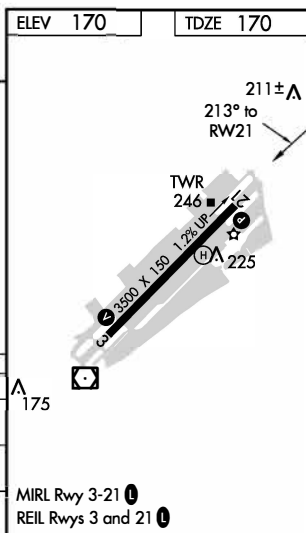
MISSED APPROACH: Climb to 600 then climbing right turn to 5000 direct CAPOB and on track 283° to SADDE and hold, continue climb-in-hold to 5000.

UNICOM
122.95

RADAR REQUIRED



CATEGORY		A	B	C	D
LPV	DA	440- 1 270 (300- 1)			
LNAV/ VNAV	DA	685-1 3/8 515 (600-1 3/8)			
LNAV	MDA	1120-1¼ 950 (1000-1¼)	1120- 2 1/2 950 (1000-2 1/2)		



SANTA MONICA MUNI (SMO)

RNAV (GPS) RWY 21