

<b>Flight Procedure Tracking Form</b>		<b>Action:</b> AMENDMENT	<b>Task Type:</b> IAP	<b>Date Open:</b> 03/07/2018	<b>Task #:</b> 2018022130228001002	<b>Request #:</b> 20180221302280
<b>Procedure:</b> NDB RWY 23R AMDT 19A				<b>Airport ID:</b> KBTL	<b>Airport:</b> W K KELLOGG	<b>Reimbursable #:</b> NO
<b>City:</b> BATTLE CREEK	<b>ST:</b> MI	<b>GPS #:</b>	<b>Estimated Chart Date:</b> 10/11/2018		<b>FICO #:</b>	
<b>Fac ID:</b> BTL		<b>Fac. Type:</b> NDB			<b>Specialist:</b> RONALD SALPINO	
<b>Procedure Review</b>						
	<b>Rec'd</b>	<b>Rel'd</b>	<b>Full Name</b>	<b>Comments</b>		
<b>Lead:</b>	03/06/2018			<i>Digitally signed by</i>		
<b>QA:</b>				<b>DONALD H LANIER</b>		
<b>Liaison:</b>				Aug 06, 2018		
<b>Procedure Comments:</b> ENROUTE-NON <b>Remark Type:</b> INFORMATION  P-NOTAM FDC 8/0772  CANCELS FDC 8/3216.  PROCESSED IAW AIRCRAFT OPERATIONS GROUP (AJW-33) MEMO, DECEMBER 22, 2017, SUBJECT: FLIGHT INSPECTION REVIEW NOT REQUIRED.  CONTACT TEAM 3 SUB-TEAM MANAGER ADOLFO URRUTIA 405 954-2079.						




LOM BT	APP CRS	Rwy Idg	10004
272	226°	TDZE	929
		Apt Elev	952

NDB RWY 23R  
WK KELLOGG (BTL)

**⚠** Circling to Rwy 5R/23L/31 NA at night. When local altimeter setting not received, use Grand Rapids altimeter setting: increase all MDA 120 feet, increase S-23R Cats C and D visibility to 1½ SM and Circling Cat C visibility to 2 SM and Cat D to 2¼ SM. For inop ALS, increase S-23R Cat D visibility to 1½ SM. For inop ALS when using Grand Rapids altimeter, increase S-23R Cat C/D visibility to 1½ SM.

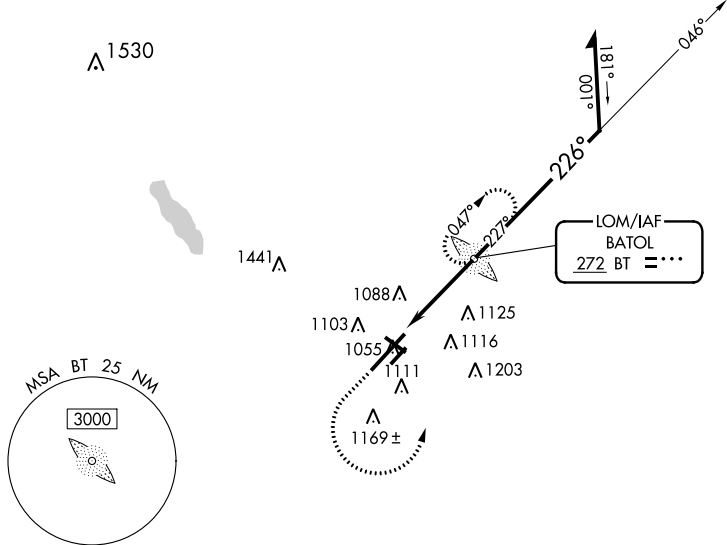
**MALSR**



**MISSED APPROACH:** Climb to 1500 then climbing left turn to 3000 direct BATOL LOM and hold, continue climb-in-hold to 3000.

ATIS	KALAMAZOO APP CON ★	BATTLE CREEK TOWER ★	GND CON	UNICOM	CTAF
128.325	119.2 239.25	126.825	121.7	122.95	126.825 ①

RADAR REQUIRED



ELEV 952 **D** TDZE 929