

Flight Procedure Tracking Form		Action: FLIGHT CHECK	Task Type: IAP	Date Open: 02/21/2018	Task #: 2018022129399301001	Request #: 20180221293993
Procedure: RNAV (GPS) RWY 27 AMDT 1			Airport ID: K08D	Airport: STANLEY MUNI		Reimbursable #: NO
City: STANLEY	ST: ND	GPS #:	Estimated Chart Date: 11/08/2018		FICO #:	
Fac ID: N/A		Fac. Type:			Specialist:	
Procedure Review						
	Rec'd	Rel'd	Full Name	Comments		
Lead:	03/06/2018			<div>QUALITY</div> <div>10</div> <div>CHECKED</div>		
QA:						
Liaison:						
Procedure Comments:			ENROUTE-NON	Remark Type: INFORMATION		
<p>ACTIVE DATA USED. THIS CANCELS 8/1919.</p> <p>CONTACT ROBERT HAMILTON: 405-954-4608</p> <p style="text-align: right;">ARI SAVED 7/18/18</p>						

STANLEY, NORTH DAKOTA

AL-9455 (FAA)

FIG

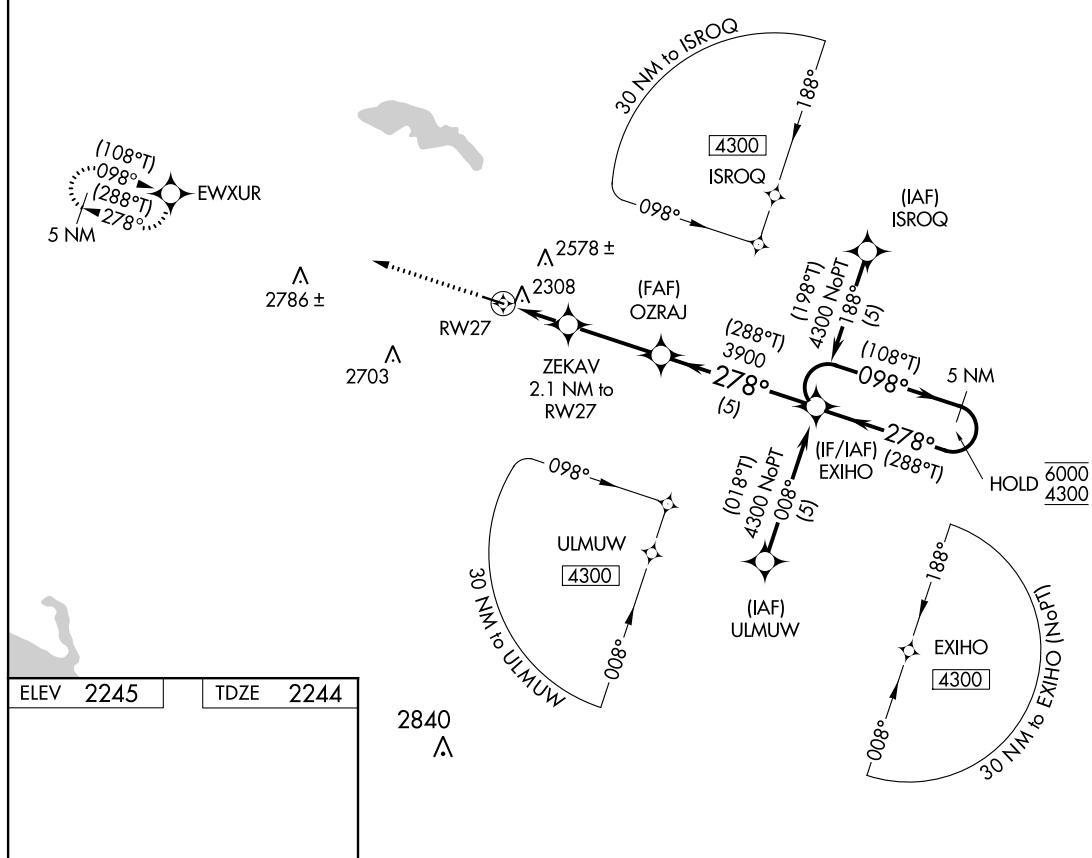
APP CRS	Rwy Idg	3900
278°	TDZE	2244
	Apt Elev	2245

RNAV (GPS) RWY 27

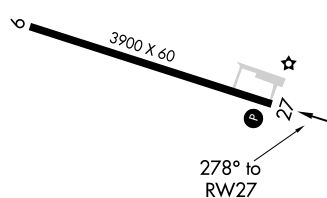
STANLEY MUNI (Ø8D)

RNP APCH.		MISSED APPROACH: Climb to 5000 direct EWXUR and hold.
Procedure NA at night. Rwy 27 helicopter visibility reduction below 1 SM NA.		
AWOS-3 121.1	MINNEAPOLIS CENTER 127.6 279.6	CTAF 122.9 0

PROTOTYPE-NOT FOR NAVIGATION



ELEV 2245 TDZE 2244



MIRL Rwy 9-27 0

5000	EWXUR	VGSI and descent angles not coincident (VGSI Angle 3.00/ TCH32).		5 NM Holding Pattern
		ZEKAV 2.1 NM to RWY 27	OZRAJ	EXIHO
		2940	3900	6000 4300
		2.1	3 NM	5 NM
CATEGORY	A	B	C	D
LNAV MDA	2620-1	376 (400-1)	NA	
CIRCLING	2720-1 475 (500-1)	2940-1 695 (700-1)	NA	

AUTOMATED AL-9455 RNAV (GPS) RWY 27

NC-1
20 JUL 2018
COMPILER: HD
REVIEWER:
DBL CHKR:
EFF DATE: FIG

STANLEY, NORTH DAKOTA

Amdt 1 FIG

48°18' N - 102°24' W

STANLEY MUNI (Ø8D)
RNAV (GPS) RWY 27

STANLEY, NORTH DAKOTA

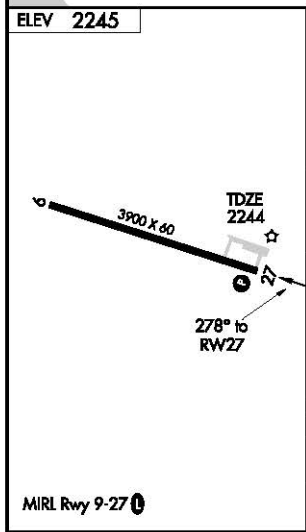
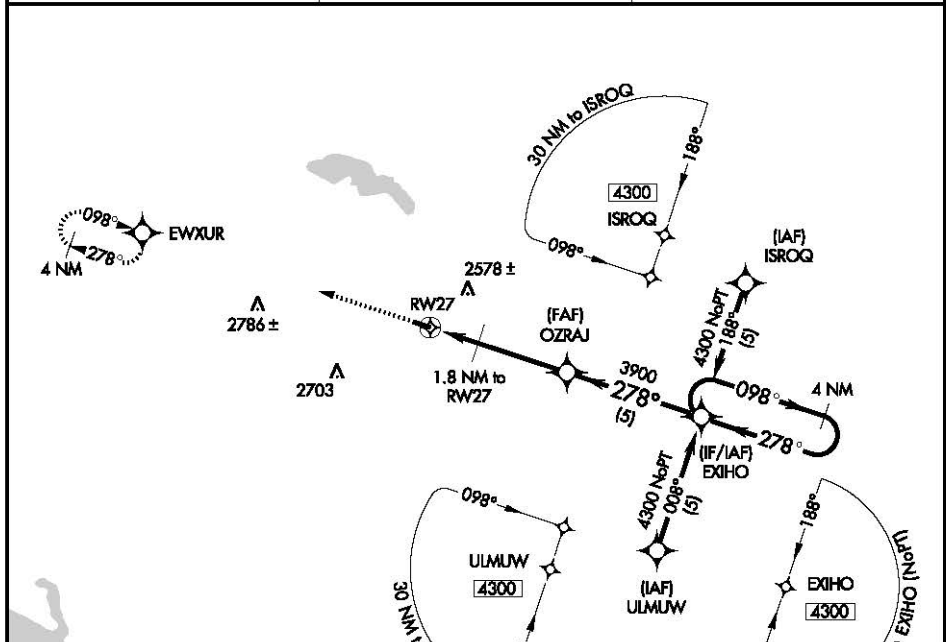
AL-9455 (FAA)

APP CRS 278°	Rwy Idg 3900
TDZE 2244	
Apt Elev 2245	

RNAV (GPS) RWY 27 STANLEY MUNI (Ø8D)

<p>▽ Use Minot altimeter setting. △NA GPS or RNP-0.3 required. DME/DME RNP-0.3 NA.</p>	<p>MISSED APPROACH: Climb to 5000 direct EWXUR WP and hold.</p>
--	--

<p>AWOS-3 121.1</p>	<p>MINNEAPOLIS CENTER 127.6 279.6</p>	<p>CTAF 122.9 0</p>
---------------------------------------	---	---------------------------------------



<p>5000 EWXUR</p>			
<p>4 NM Holding Pattern</p>			
<p>EXIHO OZRAJ 3900 2800 278° 098° 4300</p>			
<p>1.8 NM to RWY 27 3.00° TCH 40 5 NM</p>			
<p>VGSI and descent angles not coincident</p>			
CATEGORY	A	B	C
LNAV MDA	2740-1	496 (500-1)	NA
CIRCLING	2880-1	635 (700-1)	NA

STANLEY, NORTH DAKOTA
Orig 11013

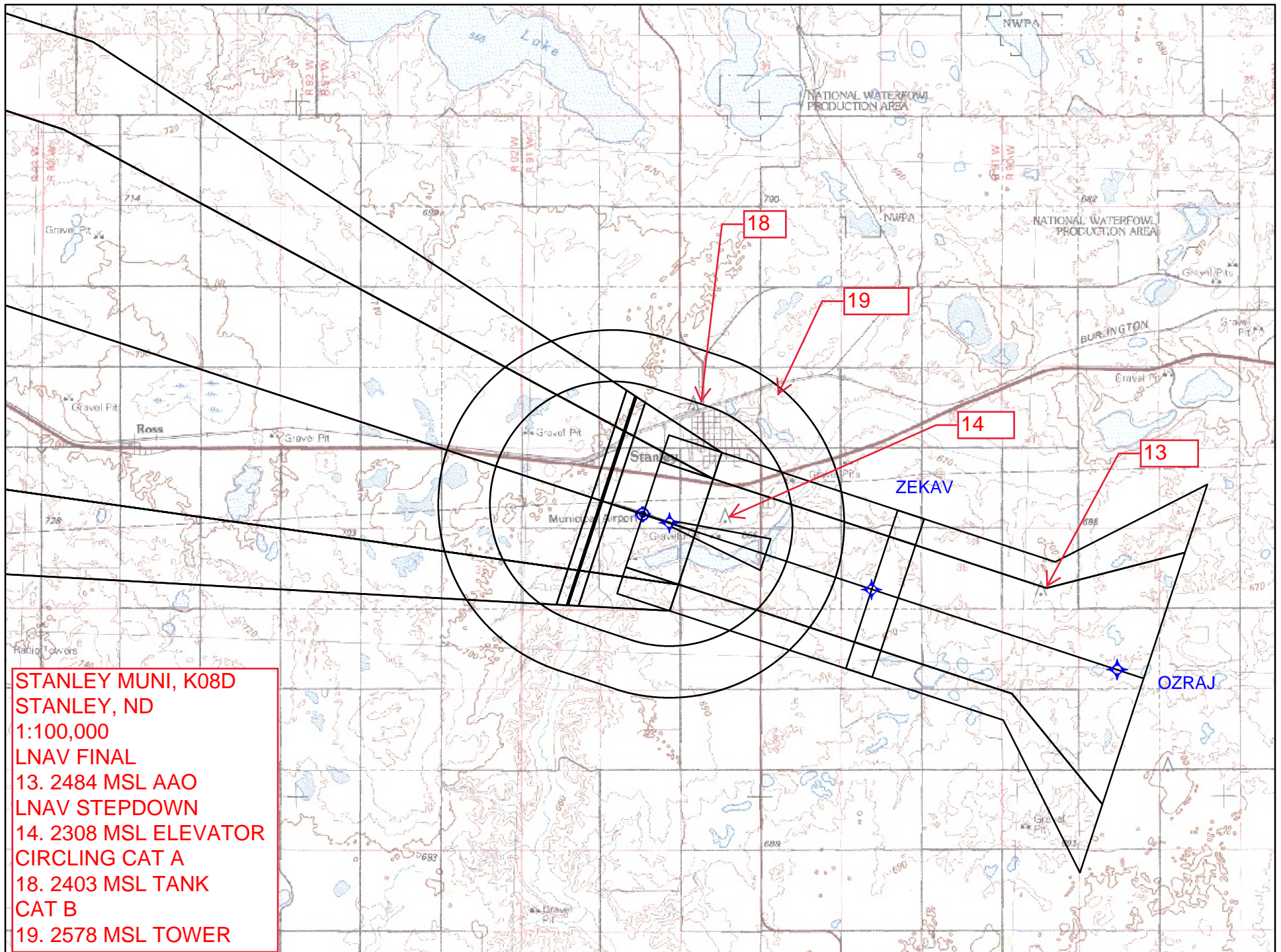
48°18' N - 102°24' W

STANLEY MUNI (Ø8D) **RNAV (GPS) RWY 27**

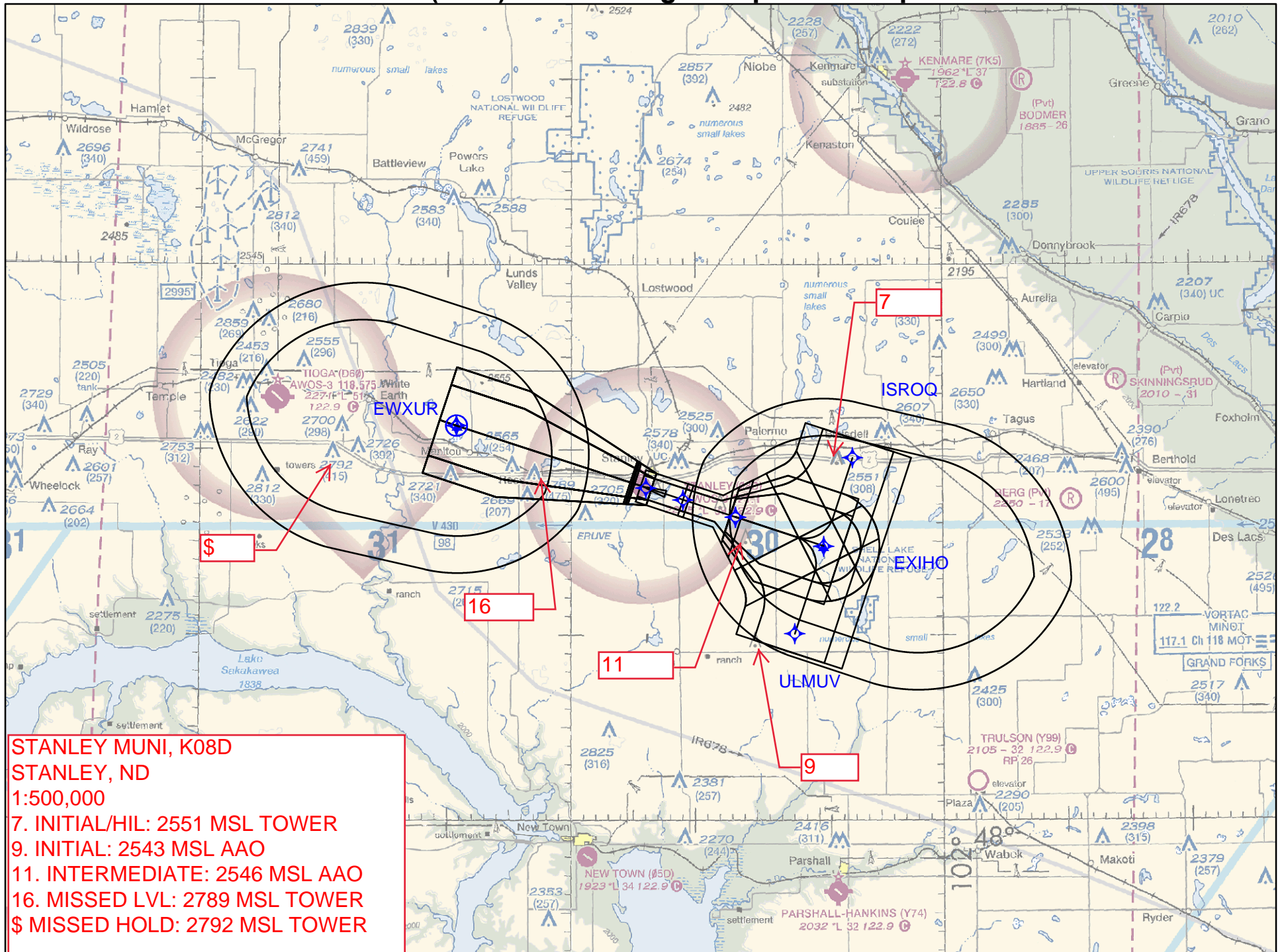
NC-1, 17 NOV 2011 to 15 DEC 2011

NC-1, 17 NOV 2011 to 15 DEC 2011

RNAV (GPS) RWY 27 Flight Inspection Map



RNAV (GPS) RWY 27 Flight Inspection Map



RNAV (GPS) RWY 27 Flight Inspection Map

