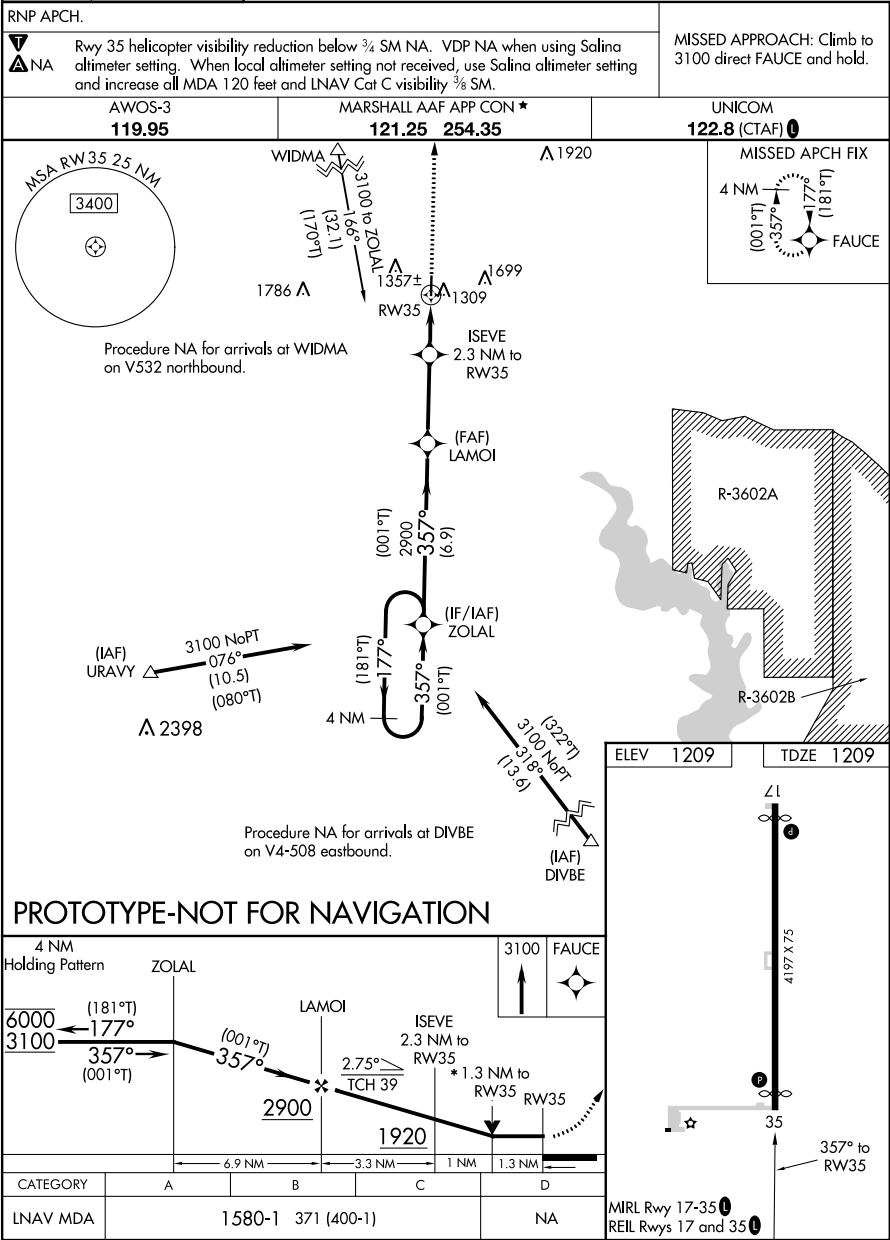


| | | | | | |
|---|-----------------------------------|---|-------------------------------------|---|--|
| Flight Procedures Cover Page | Task Action: FLIGHT CHECK | Task Type: IAP | Estimated Chart Date: 05/21/2020 | APWS Task ID: 0E9391A3D1584B809DF99592FB6743E0 | APWS Request ID: C5F09347AF0C4C42821EAC70F8742028 |
| Procedure: RNAV (GPS) RWY 35 AMDT 1 | | Enroute: YES | Specialist: Martinez, Rafael | | Agreement Number: |
| Airport ID: KCYW | Airport Name: CLAY CENTER MUNI | | Airport City: CLAY CENTER | | State: KS |
| Facility ID: | Facility Type: | Flight Inspection Remark Type: New FC Slot | | | |
| <div>Procedure Comments: FULL AMENDMENT.</div> <div>THIS CANCELS FDC 9/8163.</div> <div>PENDING DATA (12-05-19) USED FOR KCYW AIRPORT AND RUNWAY.</div> <div>CONTACT: GEORGE DAVIS 405-954-9960/DAVID TEFFETELLER 202-267-5177.</div> <div>QUALITY 24 CHECKED</div> | | | | | |

| | | |
|---------|----------|------|
| APP CRS | Rwy Idg | 3970 |
| 357° | TDZE | 1209 |
| | Apt Elev | 1209 |

RNAV (GPS) RWY 35
CLAY CENTER MUNI (C'Y'W)



NM 9 18 27 36 45
FT 50000 100000 150000 200000 250000 300000

Airport ID: KCYW
Apt Name: CLAY CENTER MUNI
City: CLAY CENTER
State: KS
Proc ID: RNAV (GPS) RWY 35
Amdt #: 1
Pub Date: 5/21/2020
Scale: 1:500,000

MISSED HOLDING
TOWER (1745)
20-022460

#1
WIDMA FEEDER
AAO (1785)

#14
MISSED LVL SFC
AAO (1628)

#10
FINAL STEP
ANTENNA (1319)
20-043981

#9
FINAL
AAO (1550)

#7
INTERMEDIATE
AAO (1579)
#12
HOLD-IN-LIEU
AAO (1579)

#5
DIVBE INITIAL
AAO (1559)

#3
URAVY INITIAL
TOWER (2398)
20-001167

