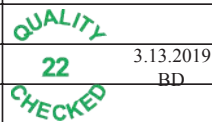


<b>Flight Procedure Tracking Form</b>		<b>Action:</b> FLIGHT CHECK	<b>Task Type:</b> IAP	<b>Date Open:</b> 02/24/2018	<b>Task #:</b> 201802172761814J001	<b>Request #:</b> 20180217276181
<b>Procedure:</b> VOR-A AMDT 6			<b>Airport ID:</b> KMGC	<b>Airport:</b> MICHIGAN CITY MUNI- PHILLIPS FIELD		<b>Reimbursable #:</b> NO
<b>City:</b> MICHIGAN CITY	<b>ST:</b> IN	<b>GPS #:</b>	<b>Estimated Chart Date:</b> 06/20/2019		<b>FICO #:</b>	
<b>Fac ID:</b> GIJ		<b>Fac. Type:</b> VORTAC			<b>Specialist:</b> JAY BAGGETT	
<b>Procedure Review</b>						
	<b>Rec'd</b>	<b>Rel'd</b>	<b>Full Name</b>	<b>Comments</b>		
<b>Lead:</b>	09/25/2018					
<b>QA:</b>						
<b>Liaison:</b>						
<b>Procedure Comments:</b> ENROUTE-NON <b>Remark Type:</b> INFORMATION  PENDING DATA USED FOR KMGC AIRPORT.  NEW CIRCLING CRITERIA APPLIED RESULTING IN LOWER CIRCLING MINS.  CONTACT: ROBERT G HAMILTON 405-954-4608						

VORTAC GIJ <b>115.4</b> Chan <b>101</b>	APP CRS <b>260°</b>	Rwy Idg TDZE Apt Elev <b>N/A</b> <b>N/A</b> <b>655</b>
---	------------------------	---

**VOR-A**

MICHIGAN CITY MUNI-PHILLIPS FIELD (MGC)

**NA**

Rwy 20 helicopter visibility reduction below 1 SM NA.

MISSED APPROACH: Climb to 3000 via GIJ  
VORTAC R-260 to JAYMR INT/GIJ 27 DME  
and hold, continue climb-in-hold to 3000.

AWOS-3  
**128.450**

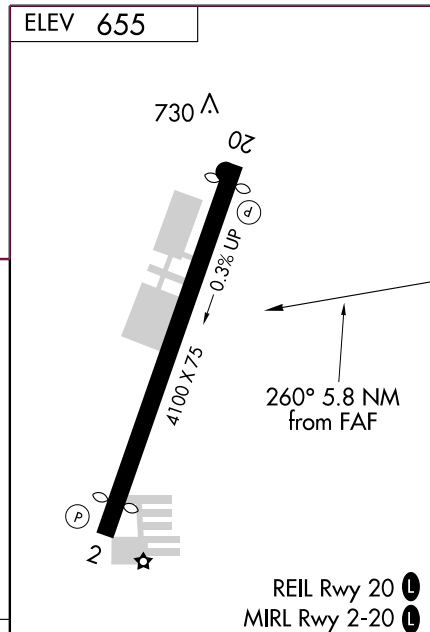
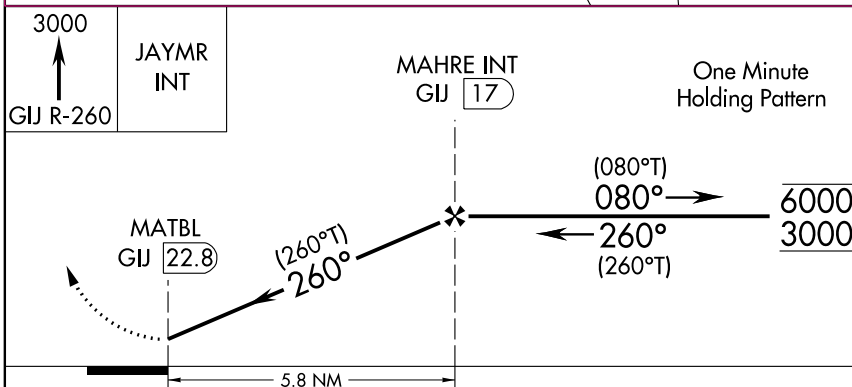
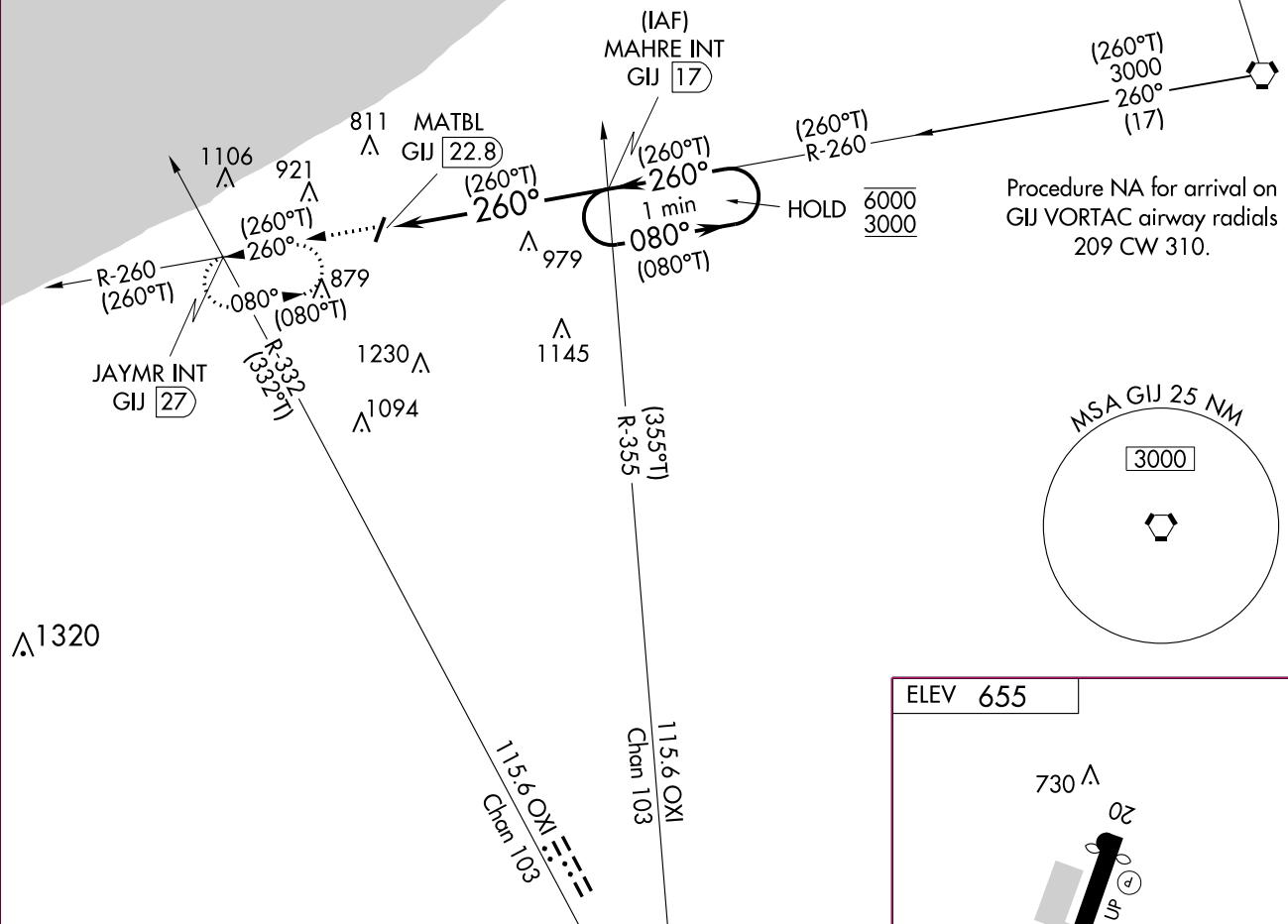
SOUTH BEND APP CON ★  
**118.55 257.8**


CLNC DEL  
**118.625**

UNICOM  
**122.7 (CTAF) 0**

**PROTOTYPE-NOT FOR NAVIGATION**

GIPPER  
**115.4 GIJ**   
Chan 101



CATEGORY	A	B	C	D	FAF to MAP 5.8 NM					
 CIRCLING	1440-1	785 (800-1)	1500-2½ 845 (900-2½)	NA	Knots	60	90	120	150	180
					Min:Sec	5:48	3:52	2:54	2:19	1:56

**VOR-A**


EXISTING

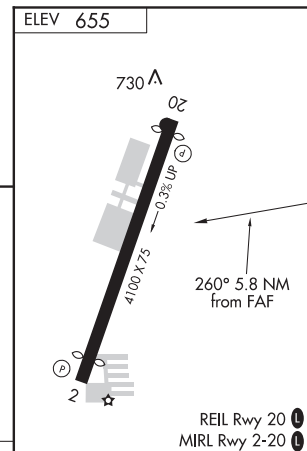
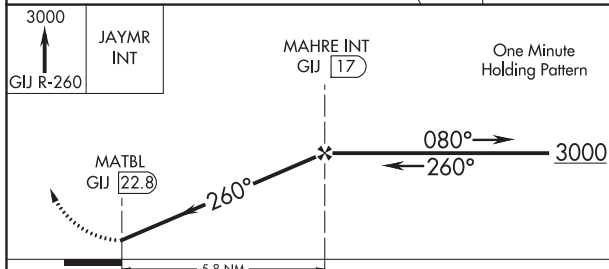
17285

VORTAC GJ <b><u>115.4</u></b> Chan <b>101</b>	APP CRS <b>260°</b>	Rwy Idg TDZE Apt Elev	<b>N/A</b> <b>N/A</b> <b>655</b>
---	------------------------	-----------------------------	--

VOR-A  
MICHIGAN CITY MUNI-PHILLIPS FIELD (MGC)

**T**  
**A** NA

AWOS-3 <b>128.450</b>	SOUTH BEND ASOS <b>120.675</b>	SOUTH BEND APP CON ★ <b>118.55</b>	CLNC DEL <b>118.625</b>	UNICOM <b>122.7</b> (CTAF) 
--------------------------	-----------------------------------	---------------------------------------	----------------------------	---



CATEGORY	A	B	C	D	FAF to MAP 5.8 NM					
CIRCLING	1580-1¼	925 (1000-1¼)	1580-2¾ 925 (1000-2¾)	NA	Knots	60	90	120	150	180
					Min:Sec	5:48	3:52	2:54	2:19	1:54

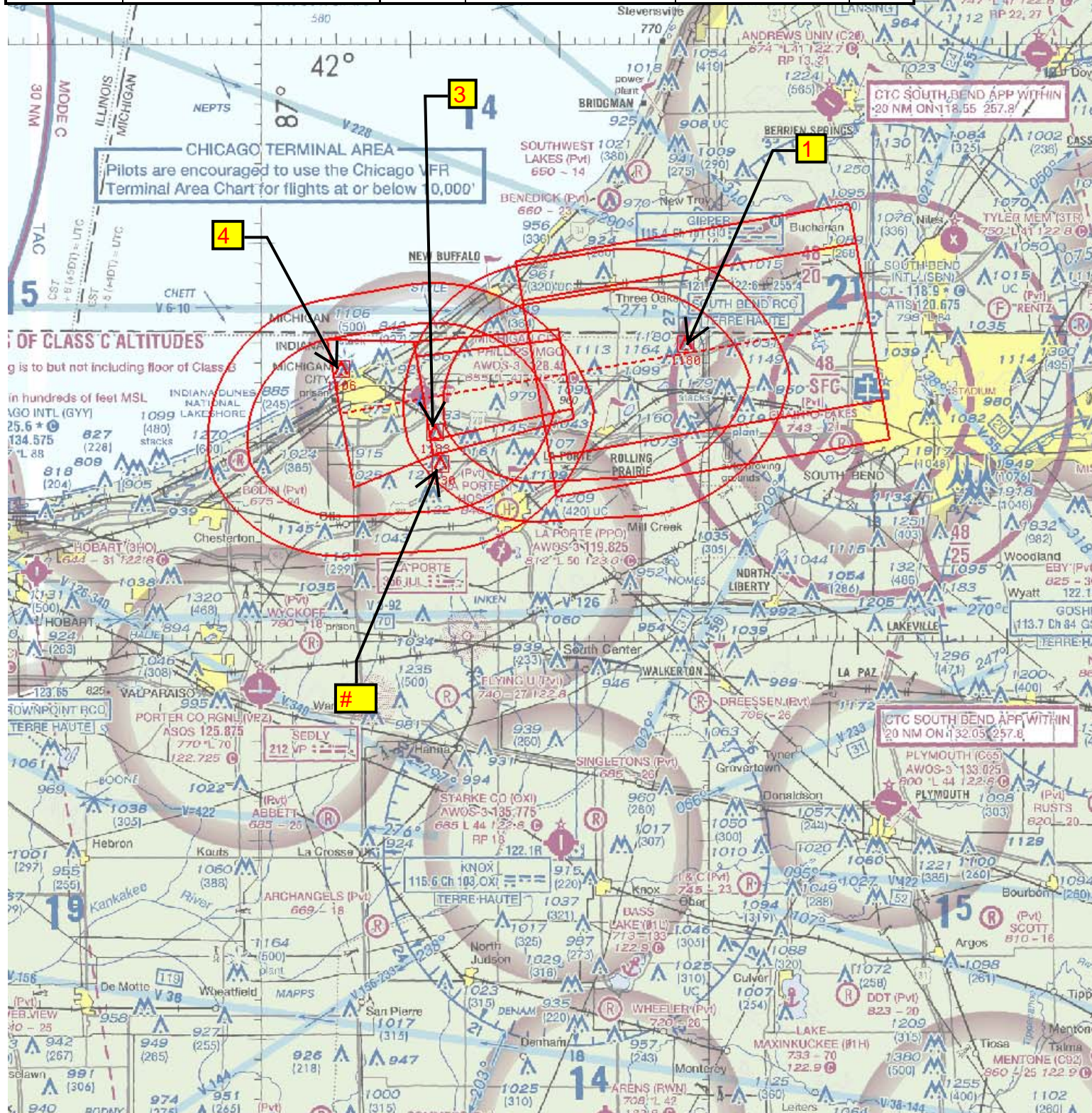
VOR-A

EC-2, 06 DEC 2018 to 03 JAN 2019



fpojdb | mgc\_vora (PROD) | 13 Dec 2018 09:22:50 | 1" = 41666.7 feet (MAP)

AIRPORT ID	KMGC	NO.	SEGMENT	OBSTRUCTION	ELEV
AIRPORT NAME	MICHIGAN CITY MUNI-PHILLIPS FIELD	1	FEEDER: GIJ - MAHRE INT	TOWER (18-001917)	1180
CITY	MICHGAN CITY	3	FINAL	TOWER (18-000781)	1183
STATE	IN	4	MA LVL SURFACE	STACK (18-000421)	1106
Proc ID:	VOR-A	1	HOLD-IN-LIEU PT	TOWER (18-001917)	1180
Amdt #	6	#	MA HOLDING	TOWER (18-001589)	1230
Scale	1:500,000				

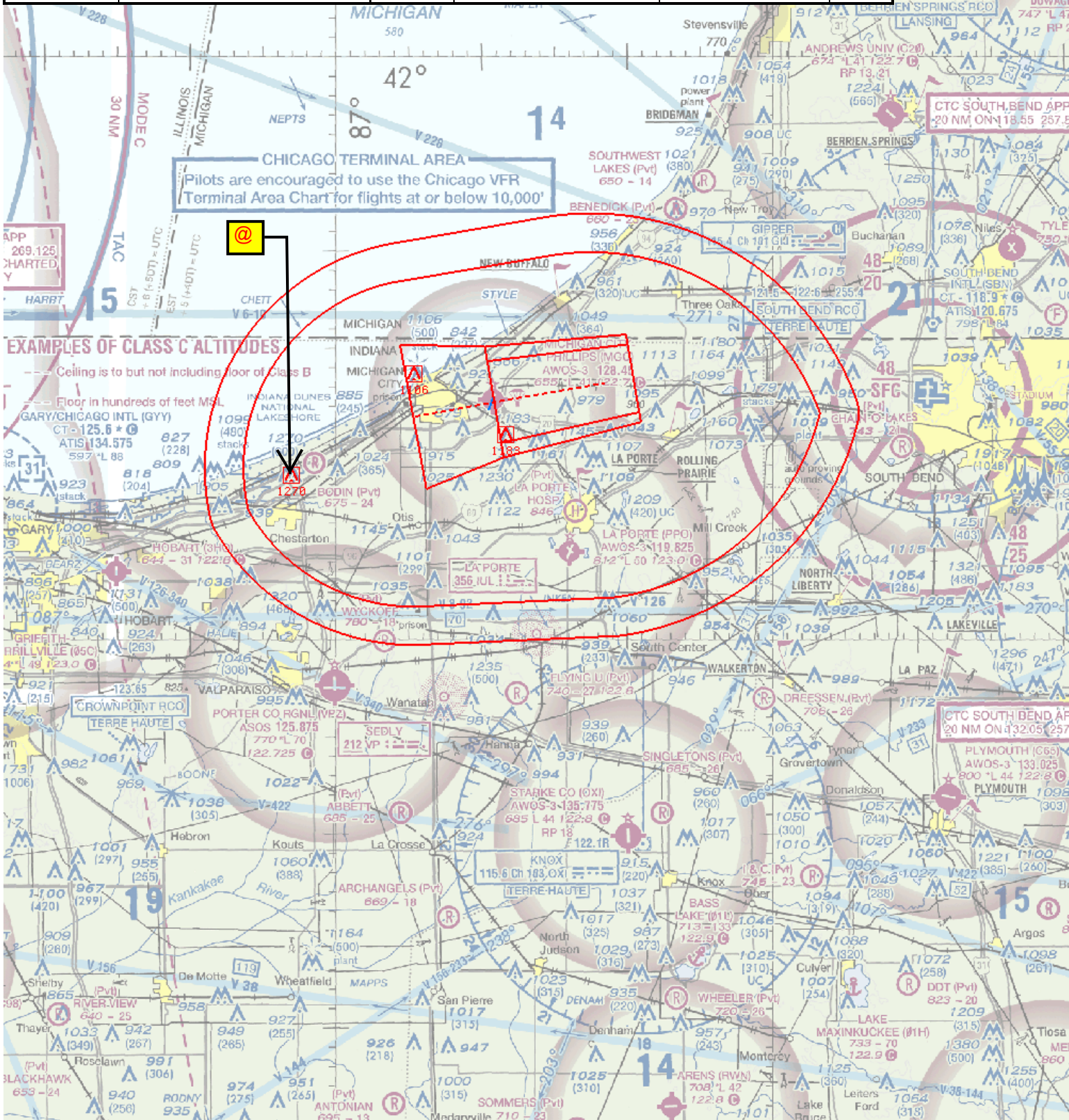




NM 7 14 21 28 35 42 49  
FT 42000 84000 126000 168000 210000 252000 294000

fpojdb | mgc\_va\_cih (PROD) | 13 Dec 2018 12:44:33 | 1" = 41750.0 feet (MAP)

AIRPORT ID	KMGC	NO.	SEGMENT	OBSTRUCTION	ELEV
AIRPORT NAME	MICHIGAN CITY MUNI-PHILLIPS FIELD	@	C-I-H	TOWER (18-020402)	1270
CITY	MICHIGAN CITY				
STATE	IN				
Proc ID:	VOR-A				
Amdt #	6				
Scale	1:500,000				





NM 1 2 3 4 5 6 7 8 9 10  
FT 8000 16000 24000 32000 40000 48000 56000 64000

fpojdb | mgc\_vora (PROD) | 13 Dec 2018 09:32:30 | 1" = 8350.0 feet (MAP)

AIRPORT ID	KMGC	NO.	SEGMENT	OBSTRUCTION	ELEV
AIRPORT NAME	MICHIGAN CITY MUNI-PHILLIPS FIELD	3	FINAL	TOWER (18-000781)	1183
CITY	MICHIGAN CITY	4	MA LVL SURFACE	STACK (18-000421)	1106
STATE	IN	6	CIRCLING A	TOWER (18-026806)	811
Proc ID:	VOR-A	7	CIRCLING B	TREE (18-031221)	869
Amdt #	6	3	CIRCLING C	TOWER (18-000781)	1183
Scale	1:100,000				

