

Flight Procedure Tracking Form		Action: FLIGHT CHECK	Task Type: IAP	Date Open: 02/19/2018	Task #: 2018021727618125003	Request #: 20180217276181
Procedure: VOR OR TACAN RWY 17 AMDT 14B			Airport ID: KSTJ	Airport: ROSECRANS MEMORIAL		Reimbursable #: NO
City: ST JOSEPH	ST: MO	GPS #:	Estimated Chart Date: 06/20/2019		FICO #:	
Fac ID: STJ		Fac. Type: VORTAC			Specialist: FRANK JACKSON	
Procedure Review						
	Rec'd	Rel'd	Full Name	Comments		
Lead:	02/20/2018			QUALITY		
QA:				44		
Liaison:				CHECKED		
Procedure Comments: ENROUTE-NON Remark Type: INFORMATION ACTIVE DATA USED, UPDATED FAS OBSTACLE FROM 1090 TREE TO 1250 AAO AND ADDED NEW CIRCLING CRITERIA. THIS CANCELS FDC 8/0012. CONTACT: DON LANIER, AJV-5431 LEAD, 405.954.8242.						

ST. JOSEPH, MISSOURI

AL-359 (FAA)

FIG

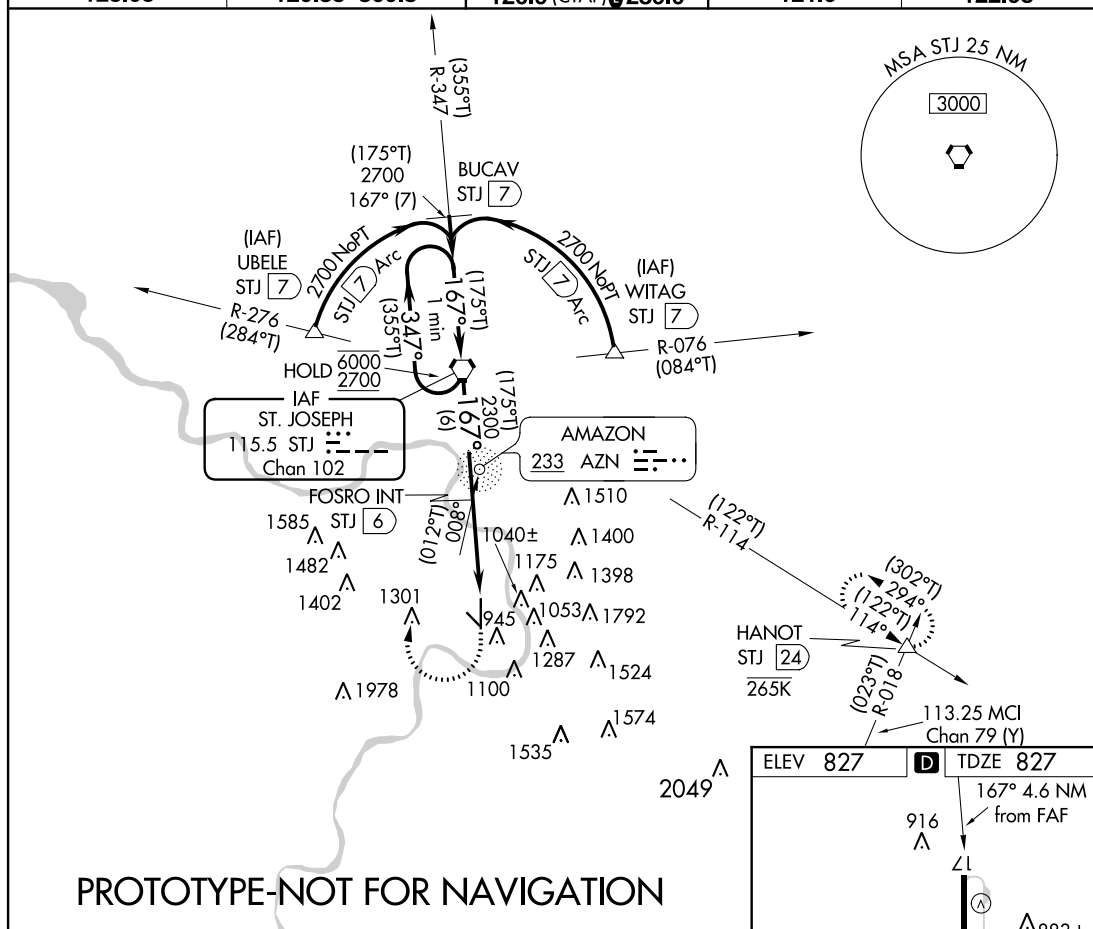
VORTAC STJ 115.5 Chan 102	APP CRS 167°	Rwy Idg TDZE Apt Elev 8061 827 827
---	------------------------	--

VOR or TACAN RWY 17

ROSECRANS MEMORIAL (STJ)

ADF or DME REQUIRED	MISSED APPROACH: Climb to 1500 then climbing right turn to 2700 direct STJ VORTAC and hold. (TACAN aircraft climb to 2300 then climbing left turn to 3100 direct HANOT INT/STJ 24 DME and hold NW, LT, 114° inbound, GPS required).
<div> <div></div> <div>Missed approach to STJ VORTAC NA for Cat E aircraft.</div> </div> <div>ASR/PAR</div>	

ATIS 125.05	ST. JOSEPH APP CON ★ 120.35 360.8	ST. JOSEPH TOWER ★ 126.9 (CTAF) 123.0	GND CON 121.9	UNICOM 122.95
-----------------------	---	--	-------------------------	-------------------------



One Minute Holding Pattern		STJ VORTAC		1500	2700	STJ
*6000 ← 347°		(355°T)		167° →		(175°T)
2700		167° →		(175°T)		
*Course reversal NA for Cat E aircraft.		FOSRO INT STJ (6)		2.92° TCH 56		STJ (8.7)
6 NM		2.7 NM		1.9		STJ (10.6)
CATEGORY	A	B	C	D	E	
S-17	1500-1	673 (700-1)	1500-1 7/8	673 (700-1 7/8)		
CIRCLING	1500-1	673 (700-1)	1620-2 1/4 793 (800-1 1/4)	1640-2 3/4 813 (900-2 3/4)	1760-3 933 (1000-3)	
FAF to MAP 4.6 NM		Knots		60	90	120
		Min:Sec		4:36	3:04	2:18
				1:50	1:32	

ST. JOSEPH, MISSOURI

Amdt 14B FIG

39°46'N-94°55'W

ROSECRANS MEMORIAL (STJ)

VOR or TACAN RWY 17

AUTOMATED AL-359 VOR or TACAN RWY 17

NC-3

22FEB19

COMPILER: HD

REVIEWER:

DBL CHKR:

EFF DATE: FIG

VORTAC STJ	APP CRS	Rwy Idg	8061
115.5	167°	TDZE	827
Chan 102		Apt Elev	827

OLD

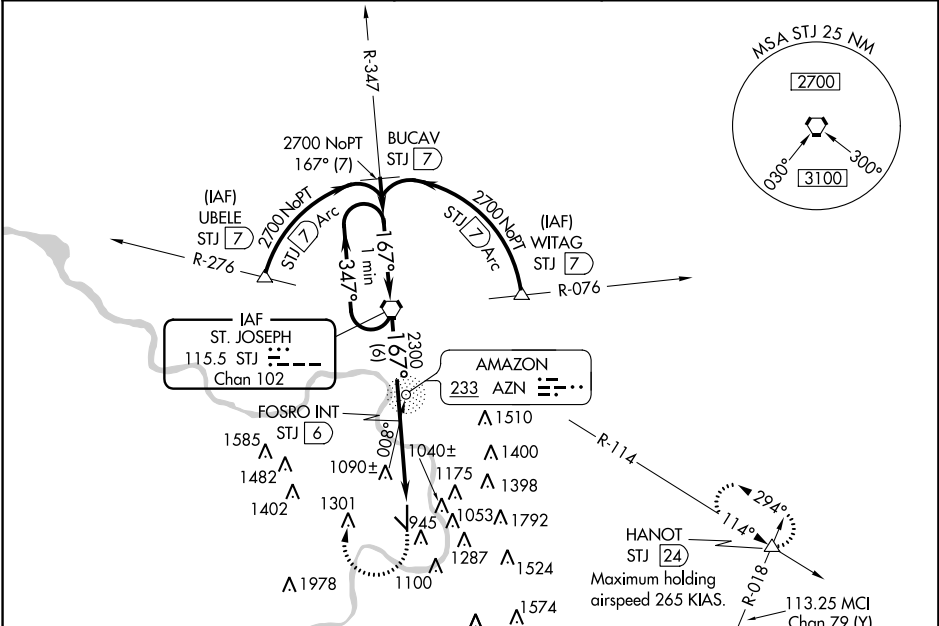
VOR or TACAN RWY 17
ROSECRANS MEMORIAL (STJ)

Missed approach to STJ VORTAC NA for Cat. E aircraft.

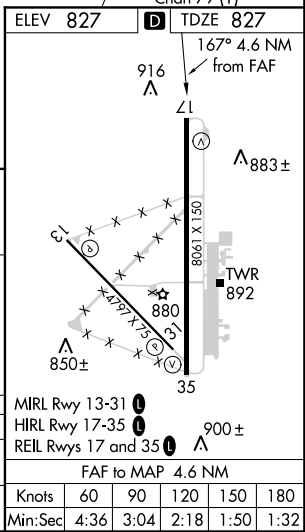
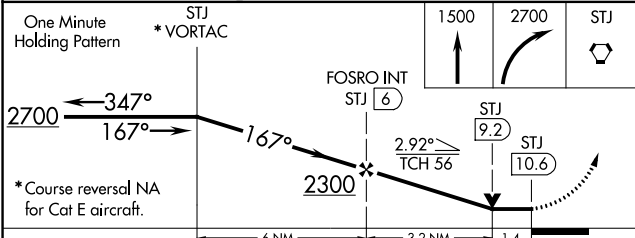
ASR/PAR

MISSED APPROACH: Climb to 1500 then climbing right turn to 2700 direct STJ VORTAC and hold. (TACAN aircraft climb to 2300 then climbing left turn to 3100 direct HANOT/STJ 24 DME and hold NW, LT, 114° inbound).

ATIS 125.05	ST. JOSEPH APP CON ★ 120.35 360.8	ST. JOSEPH TOWER ★ 126.9 (CTAF) 0239.0	GND CON 121.9	UNICOM 122.95
----------------	--------------------------------------	---	------------------	------------------



ADF or DME REQUIRED



NC-3, 06 DEC 2018 to 03 JAN 2019

NC-3, 06 DEC 2018 to 03 JAN 2019

Airport ID:	KSTJ	FM 9			
Apt Name:	ROSECRANS MEMORIAL	No	SEGMENT	OBSTRUCTION	ELEV
City:	ST. JOSEPH	1	UBELE	TOWER	1439
State:	MO	3	WITAG	TOWER	1524
Procedure:	VOR OT TACAN RWY 17	3	BUCAV	TOWER	1524
AMDT #:	14B	6	INTERMEDIATE	TOWER	1403
	1: 500,000	8	FINAL	200' AAO	1250
		3	STJ HOLD-IN-LIEU	TOWER	1524
		6	MISSED	TOWER	1403

fpoxj | stjtc17 (PROD) | 4 Dec 2018 14:12:10 | 1" = 41666.7 feet (MAP) (75)

Airport ID:	KSTJ	FM 9			
Apt Name:	ROSECRANS MEMORIAL	No	SEGMENT	OBSTRUCTION	ELEV
City:	ST. JOSEPH	1	UBELE	TOWER	1439
State:	MO	3	WITAG	TOWER	1524
Procedure:	VOR OT TACAN RWY 17	3	BUCAV	TOWER	1524
AMDT #:	14B	6	INTERMEDIATE	TOWER	1403
	1: 500,000	8	FINAL	200' AAO	1250
	TACAN MISSED APPROACH	10	TACAN MISSED	TOWER	1792
		@	HANOT HOLDING	WINDMILL	1571

Airport ID:	KSTJ	FM 9			
Apt Name:	ROSECRANS MEMORIAL	No	SEGMENT	OBSTRUCTION	ELEV
City:	ST. JOSEPH	1	UBELE	TOWER	1439
State:	MO	3	WITAG	TOWER	1524
Procedure:	VOR OT TACAN RWY 17	3	BUCAV	TOWER	1524
AMDT #:	14B	6	INTERMEDIATE	TOWER	1403
	1: 500,000	8	FINAL	200' AAO	1250
	TACAN MISSED APPROACH	10	TACAN MISSED	TOWER	1792
		@	HANOT HOLDING	WINDMILL	1571

NM 1 2 3 4 5 6 7 8 9 10
FT 8000 16000 24000 32000 40000 48000 56000 64000

fpofxj | stjvr17 (PROD) | 4 Dec 2018 13:54:05 | 1" = 8333.3 feet (MAP)

