

<b>Flight Procedure Tracking Form</b>		<b>Action:</b> FLIGHT CHECK	<b>Task Type:</b> IAP	<b>Date Open:</b> 02/17/2018	<b>Task #:</b> 201802172761810J001	<b>Request #:</b> 20180217276181
<b>Procedure:</b> VOR RWY 3 AMDT 0C			<b>Airport ID:</b> KDVL	<b>Airport:</b> DEVILS LAKE RGNL		<b>Reimbursable #:</b> NO
<b>City:</b> DEVILS LAKE	<b>ST:</b> ND	<b>GPS #:</b>	<b>Estimated Chart Date:</b> 10/11/2018		<b>FICO #:</b>	
<b>Fac ID:</b> DVL		<b>Fac. Type:</b> VOR_DME			<b>Specialist:</b> RONALD SALPINO	
<b>Procedure Review</b>						
	<b>Rec'd</b>	<b>Rel'd</b>	<b>Full Name</b>	<b>Comments</b>		
<b>Lead:</b>	02/20/2018			<div>QUALITY</div> <div>10</div> <div>CHECKED</div>		
<b>QA:</b>						
<b>Liaison:</b>						
<b>Procedure Comments:</b> ENROUTE-NON <b>Remark Type:</b> INFORMATION  P-NOTAM FDC 8/7602  CANCELS FDC 8/1484  PROCESSED IAW AIRCRAFT OPERATIONS GROUP (AJW-33) MEMO, DECEMBER 22, 2017, SUBJECT: FLIGHT INSPECTION REVIEW NOT REQUIRED.  CONTACT TEAM 3 SUB-TEAM MANAGER ADOLFO URRUTIA 405 954-2079.						

VOR/DME DVL	APP CRS	Rwy Idg	4314
111.0	030°	TDZE	1450
Chan 47		Apt Elev	1470

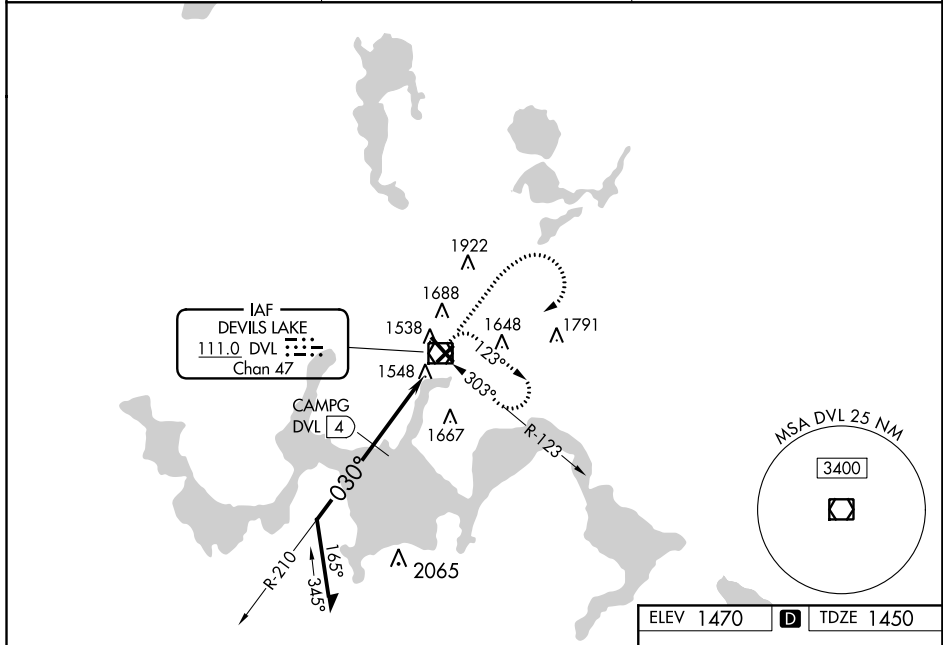
# VOR RWY 3

DEVILS LAKE RGNL (DVL)

**T** When local altimeter setting not received, use Cando altimeter setting and increase all MDA 80 feet, increase S-3 Cat A and Circling Cat C visibility ¼ mile, increase CAMPG FIX MINIMUMS S-3 Cats C/D visibility ⅜ mile and Circling Cats C/D ¼ mile. Helicopter visibility reduction below 1 SM NA.

**MISSED APPROACH:** Climb to 3000 then climbing right turn to 3500 direct DVL VOR/DME and hold.

AWOS-3PT 125.875	GRAND FORKS RADIO 122.3	UNICOM 122.8 (CTAF) <b>1</b>
---------------------	----------------------------	---------------------------------



Remain within 10 NM

3300

210°

030°

\*2320

CAMP DVL (4)

DVL VOR/DME

3000

3500

DVL

\*2400 when using Cando altimeter setting.

4 NM

CATEGORY	A	B	C	D
S-3	2320-1 870 (900-1)	2320-1¼ 870 (900-1¼)	2320-2½ 870 (900-2½)	
<b>C</b> CIRCLING	2320-1¼ 850 (900-1¼)		2320-2¾ 850 (900-2¾)	2320-2¾ 850 (900-2¾)
CAMP FIX MINIMUMS				
S-3	1820-1 370 (400-1)			
<b>C</b> CIRCLING	2000-1 530 (600-1)		2240-2¼ 770 (800-2¼)	2240-2½ 770 (800-2½)

ELEV 1470 **D** TDZE 1450

1500

1483

1472

1472

030° to VOR/DME

HIRL Rwy 13-31 **1**

REIL Rws 3, 13, and 21 **1**

MIRL Rwy 3-21 **1**