

<b>Flight Procedure Tracking Form</b>		<b>Action:</b> FLIGHT CHECK	<b>Task Type:</b> IAP	<b>Date Open:</b> 04/12/2018	<b>Task #:</b> 2018021631570201004	<b>Request #:</b> 20180216315702
<b>Procedure:</b> APPROACH RNAV (GPS) RWY 4 ORIG-C			<b>Airport ID:</b> KCDW	<b>Airport:</b> ESSEX COUNTY		<b>Reimbursable #:</b> NO
<b>City:</b> CALDWELL	<b>ST:</b> NJ	<b>GPS #:</b>	<b>Estimated Chart Date:</b> 09/13/2018		<b>FICO #:</b>	
<b>Fac ID:</b> N/A		<b>Fac. Type:</b>		<b>Specialist:</b> BARBARA GORMAN		
<b>Procedure Review</b>						
	<b>Rec'd</b>	<b>Rel'd</b>	<b>Full Name</b>	<b>Comments</b>		
<b>Lead:</b>	03/13/2018			Digitally signed by		
<b>QA:</b>				19 JON DENTON		
<b>Liaison:</b>				Jun 20, 2018		
<b>Procedure Comments:</b>			<b>Remark Type:</b> INFORMATION			
INCORPORATE NOTAM FDC 7/6040 & 7/2129. PENDING DATA USED FOR KCDW RUNWAY 4. CONTACT: LONNIE EVERHART 405.954.4576						

Data as of: 04/16/2018 08:25:46 PM

FIG

# RNAV (GPS) RWY 4

## ESSEX COUNTY (CDW)

**T** Procedure NA at night.  
**A** Rwy 04 helicopter visibility reduction below 1 SM NA.

**MISSED APPROACH:**  
Climb to 2700 direct  
JIRBO and hold.

Procedure NA for arrival on SAX VORTAC airway radials 093 CW 252.

1359  $\Delta$  SPARTA SAX

1180  $\Delta$  1144

940

1464  $\Delta$

1457  $\Delta$  1264

1165°T  
2700  
178°  
(22.8)

987  $\Delta$

902  $\Delta$

407  $\Delta$

315  $\Delta$

322  $\Delta$

326  $\Delta$

353  $\Delta$

WISAL  
2.9 NM to RW04

434  $\Delta$

683  $\Delta$

496  $\Delta$

774  $\Delta$

734  $\Delta$

502  $\Delta$

1048  $\Delta$

728  $\Delta$

988  $\Delta$

923  $\Delta$

885

671  $\Delta$

697  $\Delta$

MISSED APCH FIX  
4 NM

JIRBO

PROTOTYPE-NOT FOR NAVIGATION

MSA RW04 25 NM

2900

(IF/IAF)  
YOVUN

1030°T  
2000  
043°  
(6)

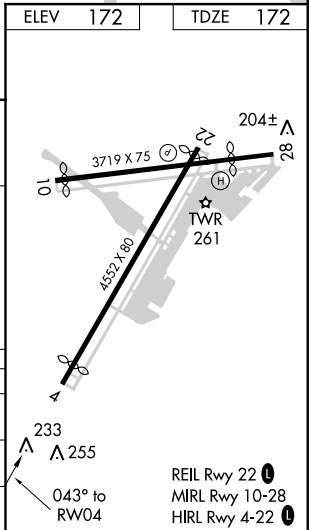
1030°T  
043°  
223°  
(210°T)

HOLD

5000  
2700

1065°T  
2700 NoPT  
078°

(IAF)  
SOFPC



ESSEX COUNTY (CDW)  
RNAV (GPS) RWY 4

OLD/EXISTING

CALDWELL, NEW JERSEY

AL-5275 (FAA)

15008

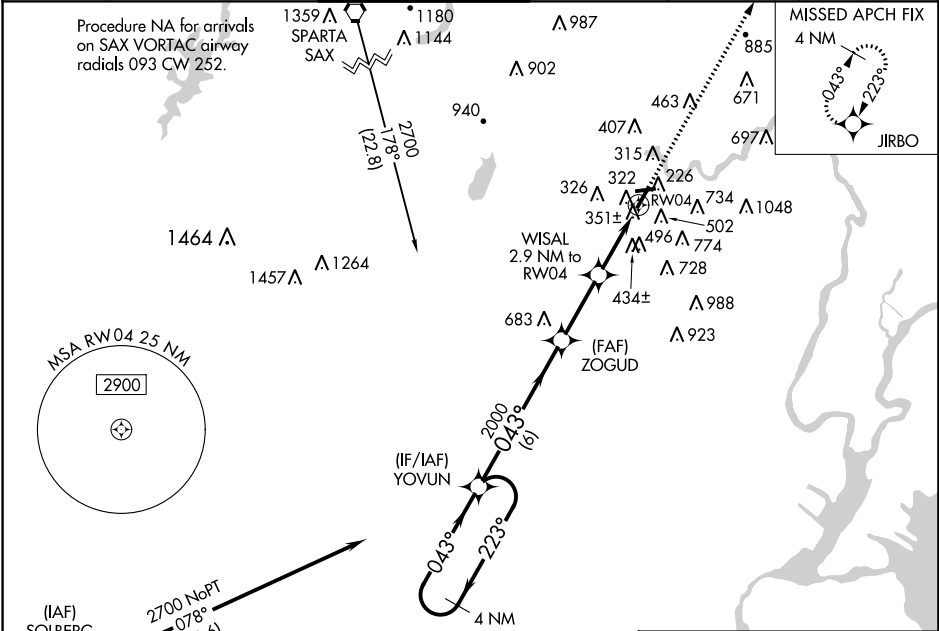
WAAS CH <b>42622</b> <b>W04A</b>	APP CRS <b>043°</b>	Rwy Idg TDZE <b>172</b> Apt Elev <b>172</b>	<b>4177</b>
--	------------------------	---	-------------

**RNAV (GPS) RWY 4**  
ESSEX COUNTY (CDW)

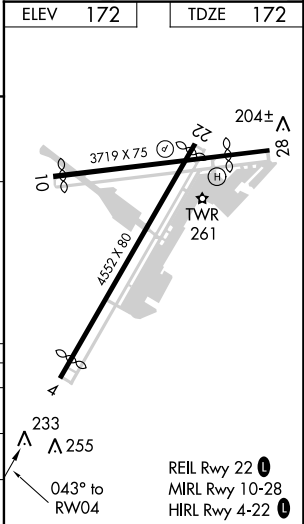
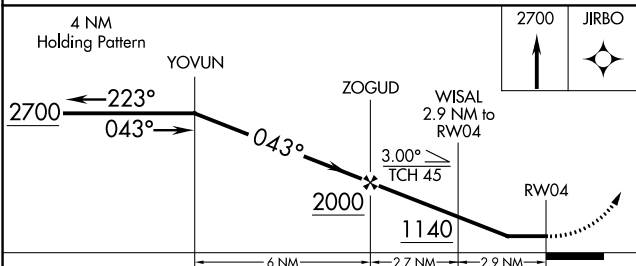
**⚠** Circling to Rwy 10, 28 NA at night. DME/DME RNP-0.3 NA.  
**⚠** Visibility reduction by helicopters NA. Straight-in/Circling Rwy 4 procedure NA at night.  
When local altimeter setting not received, use Newark altimeter setting and increase all MDA 60 feet, and LNAV Cat C and D and Circling Cat A-C visibility ¼ mile.

**MISSED APPROACH:**  
Climb to 2700 direct JIRBO and hold.

ATIS <b>135.5</b>	NEW YORK APP CON <b>127.6 379.9</b>	CALDWELL TOWER ★ <b>119.8 (CTAF) 0</b>	GND CON <b>121.9</b>	CLNC DEL <b>121.1</b>	UNICOM <b>122.95</b>
----------------------	--	---	-------------------------	--------------------------	-------------------------



ELEV <b>172</b>	TDZE <b>172</b>
-----------------	-----------------



CATEGORY	A	B	C	D
LP MDA	620-1	448 (500-1)	620-1 3/8	448 (500-1 3/8)
LNAV MDA	660-1	488 (500-1)	660-1 3/8	488 (500-1 3/8)
CIRCLING	940-1 768 (800-1)	980-1 808 (900-1)	1040-2 1/2 868 (900-2 1/2)	1100-3 928 (1000-3)

CALDWELL, NEW JERSEY  
Orig-B 08JAN15

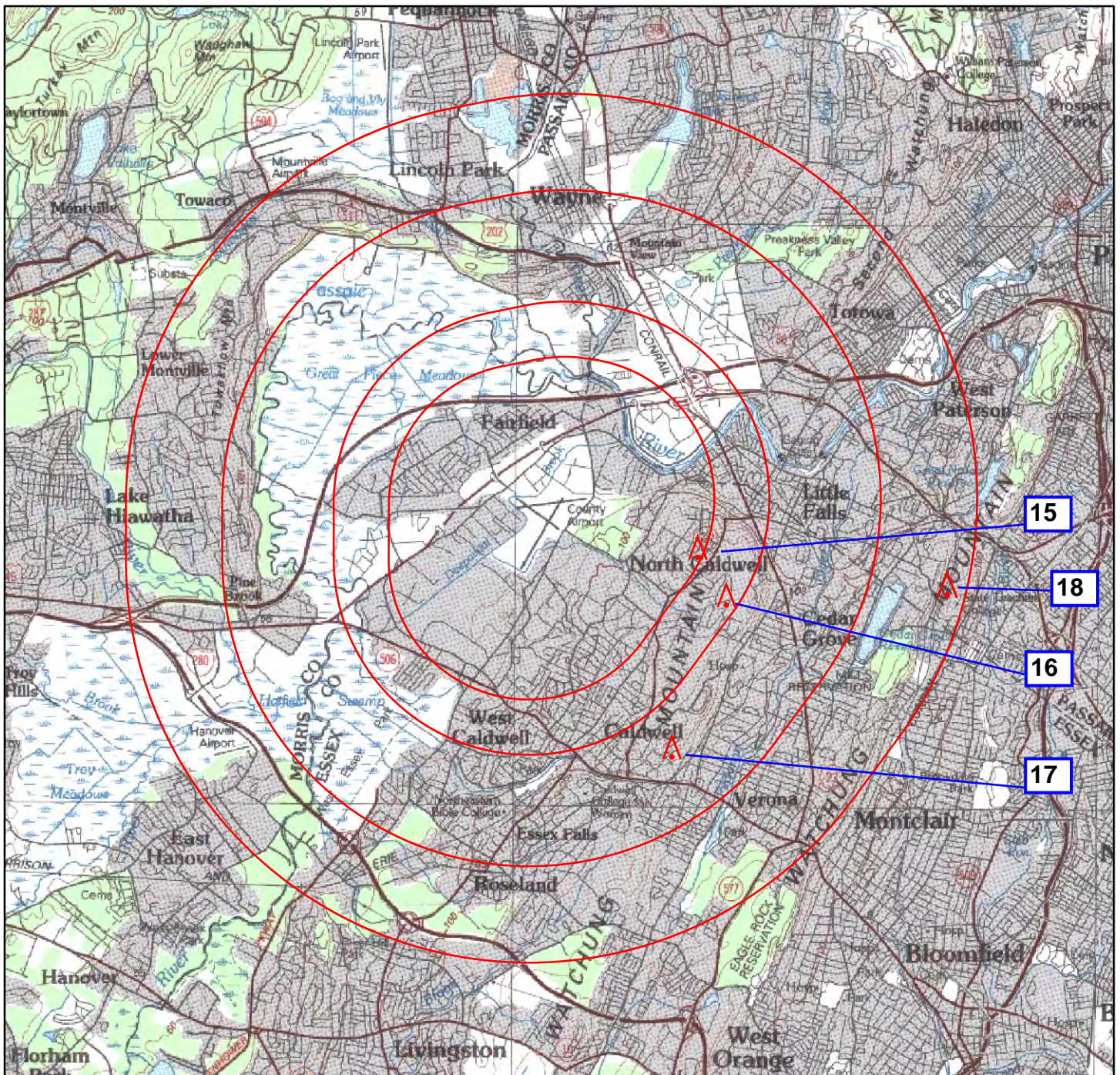
40°53'N-74°17'W

ESSEX COUNTY (CDW)  
**RNAV (GPS) RWY 4**

NE-2, 29 MAR 2018 to 26 APR 2018

NE-2, 29 MAR 2018 to 26 APR 2018





APT NAME/ID: ESSEX COUNTY (KCDW)  
CITY/STATE: CALDWELL, NEW JERSEY  
1:100,000

#15: CIRC CAT A: 640 TREE (34-020511)  
#16: CIRC CAT B: 732 T/L (34-058048)  
#17: CIRC CAT C: 790 TREE (34-049573)  
#18: CIRC CAT D: 1048 TWR (34-000181)

## RNAV (GPS) RWY 04 Flight Inspection Map



User ID: BGorman  
User Name: Barbara CTR Gorman  
Organization: FAA  
Proc. Name: RNAV (GPS) RWY 04  
Last Modified Date: 18:14:01 17-Apr-2018

Date/Time: 18:10:01 23-May-2018  
Projection: Transverse Mercator  
Scale: 1 = 100,000

0 1,200 2,400 3,600  
Meters

