

<b>Flight Procedure Tracking Form</b>		<b>Action:</b> FLIGHT CHECK	<b>Task Type:</b> IAP	<b>Date Open:</b> 02/13/2018	<b>Task #:</b> 2018021331375401001	<b>Request #:</b> 20180213313754
<b>Procedure:</b> RNAV (GPS) RWY 33 AMDT 1A			<b>Airport ID:</b> KRMN	<b>Airport:</b> STAFFORD RGNL		<b>Reimbursable #:</b> NO
<b>City:</b> STAFFORD	<b>ST:</b> VA	<b>GPS #:</b>	<b>Estimated Chart Date:</b> 01/03/2019		<b>FICO #:</b>	
<b>Fac ID:</b> N/A		<b>Fac. Type:</b>		<b>Specialist:</b> JAMES LAFFERTY		
<b>Procedure Review</b>						
	<b>Rec'd</b>	<b>Rel'd</b>	<b>Full Name</b>	<b>Comments</b>		
<b>Lead:</b>	02/22/2018	08/23/2018	DAVID TEFFETELLER	<div>QUALITY</div> <div>10</div> <div>CHECKED</div>		
<b>QA:</b>	08/23/2018					
<b>Liaison:</b>						
<b>Procedure Comments:</b>			ENROUTE-NON	<b>Remark Type:</b> INFORMATION		
ACTIVE DATA USED FOR PROCEDURE AMENDMENT CRC REMAINDER "68CC6159" REMARKS: REQUEST TABLE TOP ONLY FC EVAL CONTACT DAVE TEFFETELLER AT 202-267-5177				<b>ARI SAVED</b> <b>9/11/18</b>		

FIG

RNAV (GPS) RWY 33  
STAFFORD RGNL (RMN)

**MISSED APPROACH:** Climb to 4000  
direct KOBEC and left turn on track  
209° to TECOV and left turn on track  
151° to FALKO and hold.

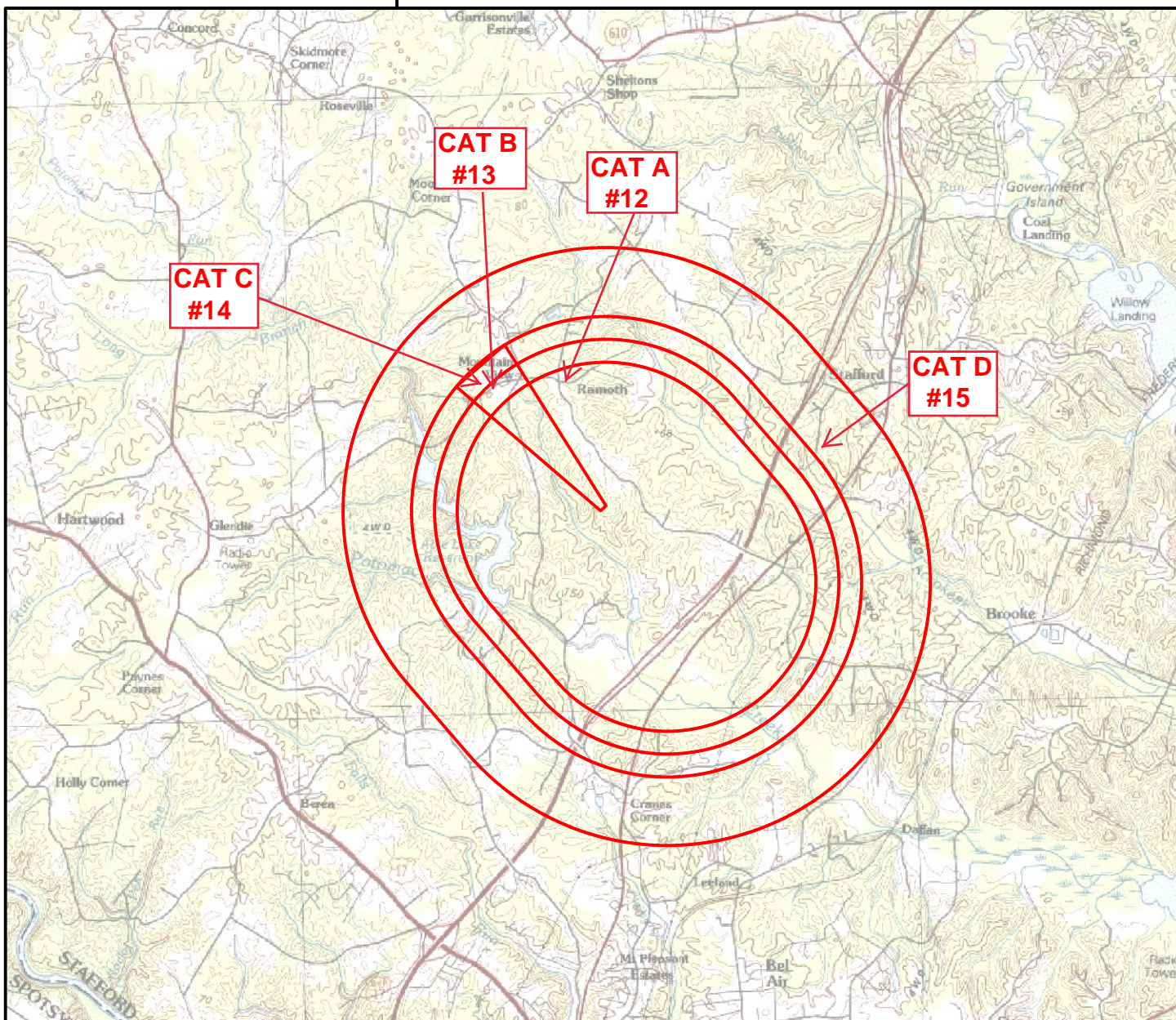
[illegible]

4000 ↑	KOBECE ✧	TECOV ✧	tr 209°	tr 151°	FALCO ✧	RISVE
						GP 3.05° TCH 46
CATEGORY	A	B	C	D		
LPV DA	450-¾ 255 (300-¾)			450-1 255 (300-1)		
INAV/ VNAV	546-¾ 351 (400-¾)			546-1 351 (400-1)		
INAV MDA	700-¾ 505 (500-¾)			700-1½ 505 (500-1½)		
CIRCLING	720-1 509 (600-1)	740-1 529 (600-1)	840-1¾ 629 (700-1¾)	880-2 669 (700-2)		

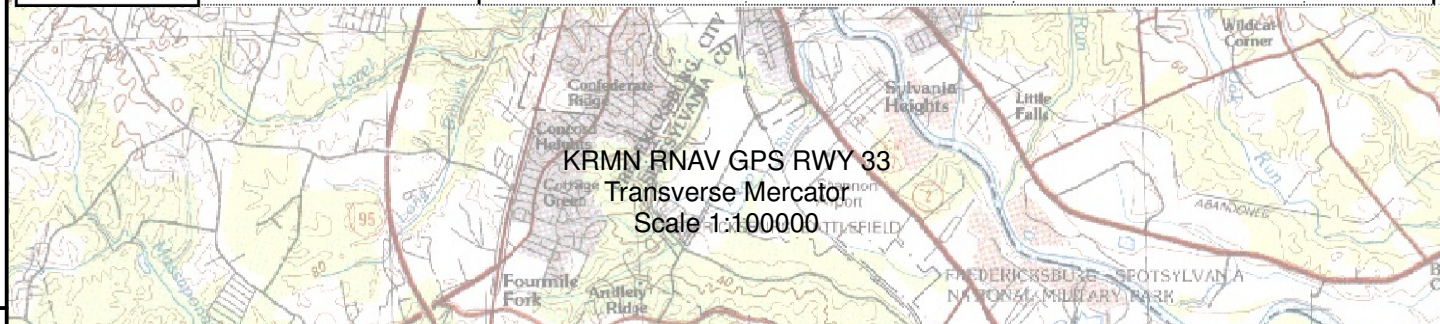
STAFFORD RGNL (RMN)  
RNAV (GPS) RWY 33



77°30'0"W



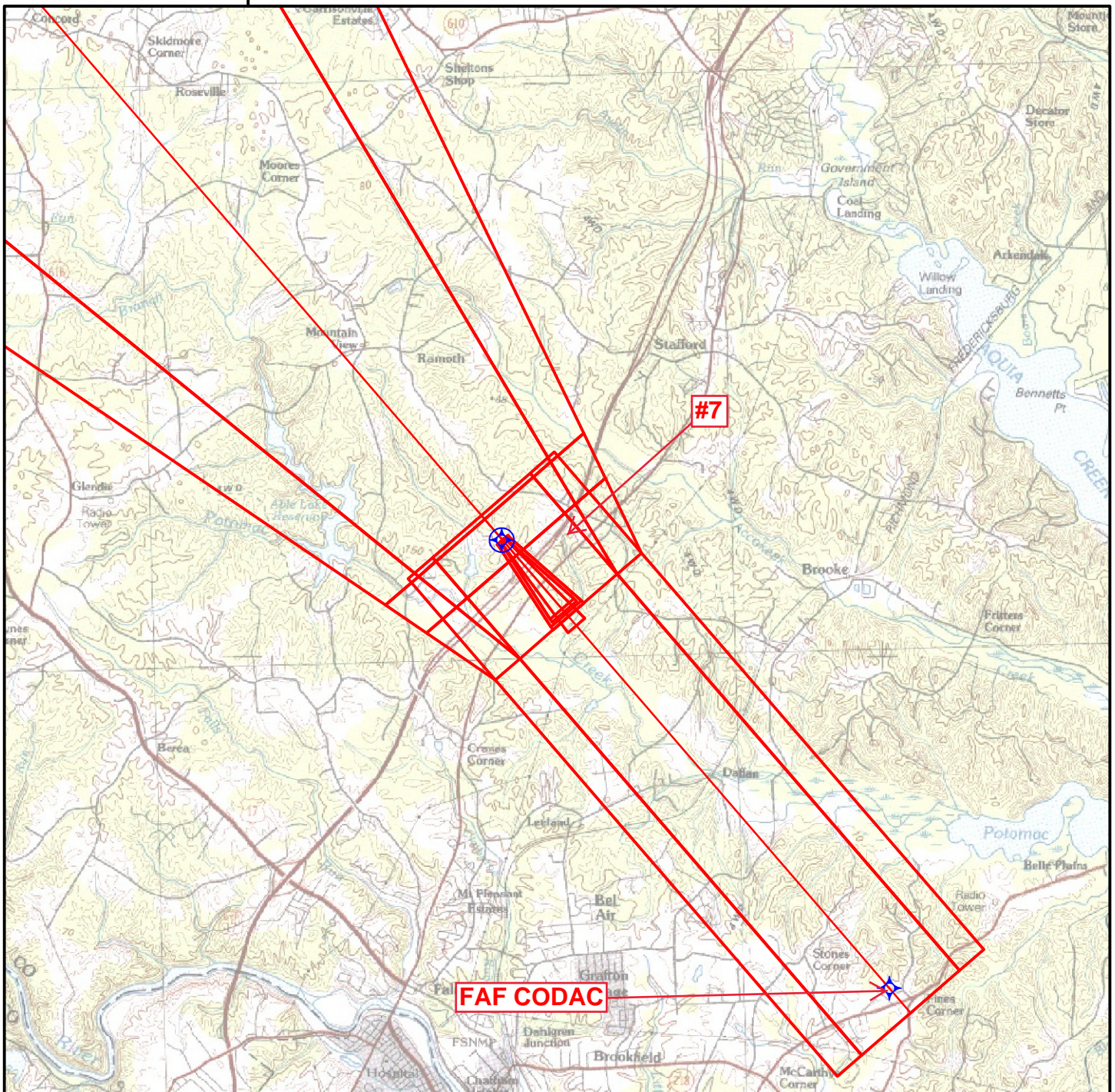
Airport ID	KRMN	Airport Name		STAFFORD RGNL	
City	STAFFORD	State		VIRGINIA	
Procedure ID	RNAV (GPS) RWY 33	Numbered Obstacle	Segment	Obstacle	Elevation
Amendment #	1A	12	CIRCLING CAT A	TREE (51-023428)	389
Date	1/3/2019	13	CIRCLING CAT B	TREE (51-023397)	405
Scale:	1:100,000	14	CIRCLING CAT C	TOWER (51-006094)	467
		15	CIRCLING CAT D	TOWER (51-001135)	515



38°15'0"N



77°30'0"W



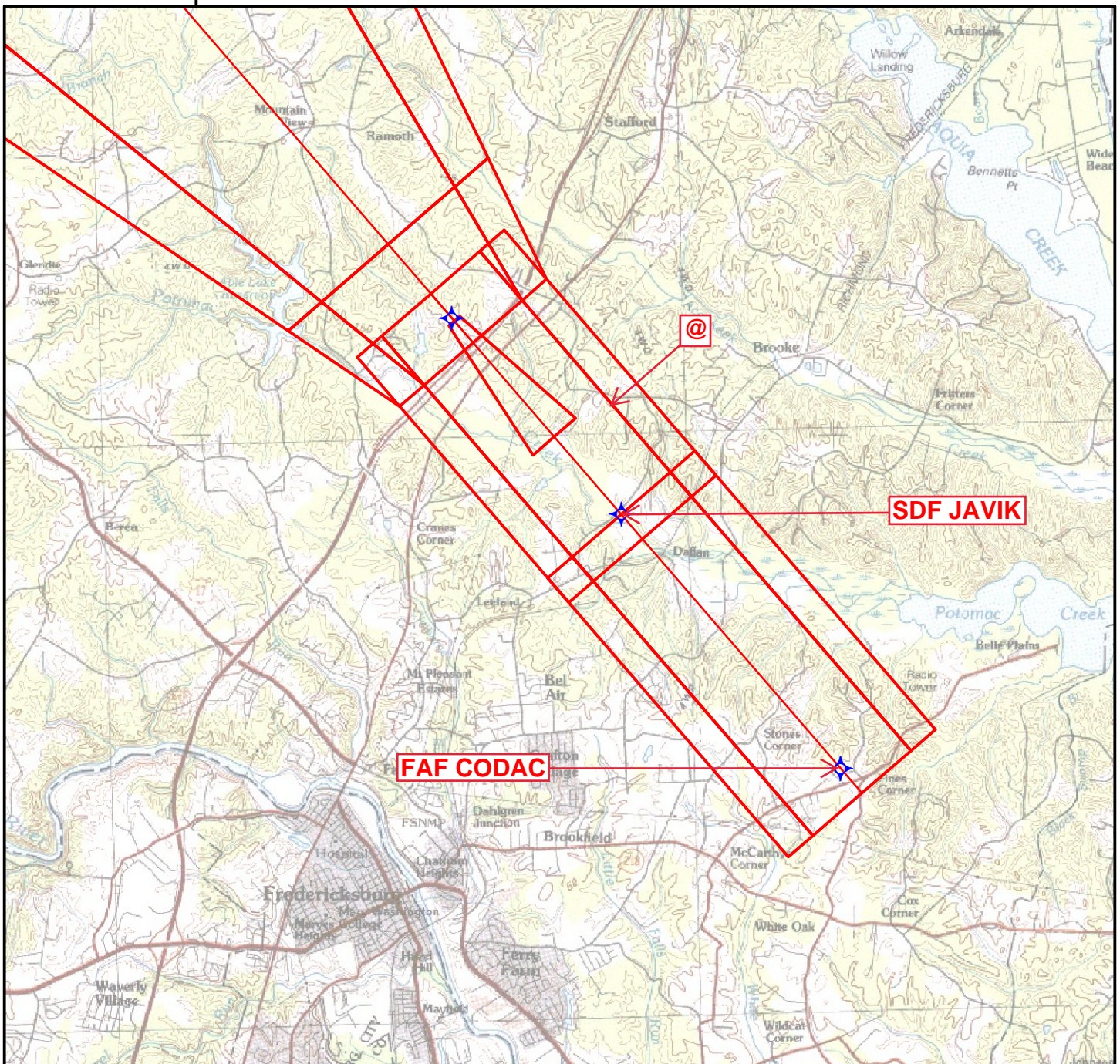
Airport ID	KRMN	Airport Name		STAFFORD RGNL	
City	STAFFORD	State		VIRGINIA	
Procedure ID	RNAV (GPS) RWY 33	Numbered Obstacle	Segment	Obstacle	Elevation
Amendment #	1A	7	LNAV/VNAV FINAL	TOWER (51-002123)	361
Date	1/3/2019	MISSED APPROACH		ASC	
Scale:	1:100,000				

KRMN RNAV GPS RWY 33  
Transverse Mercator  
Scale 1:100000

38°15'0"N



77°30'0"W



Airport ID	KRMN	Airport Name		STAFFORD RGNL	
City	STAFFORD	State		VIRGINIA	
Procedure ID	RNAV (GPS) RWY 33	Numbered Obstacle	Segment	Obstacle	Elevation
Amendment #	1A	@	NEW FAS OBSTACLE	TOWER (51-020447)	412
Date	1/3/2019				
Scale:	1:100,000				

KRMN RNAV GPS RWY 33  
Transverse Mercator  
Scale 1:100000

38°15'0"N