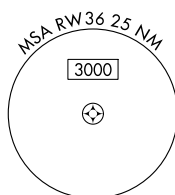


Flight Procedure Tracking Form		Action: FLIGHT CHECK	Task Type: IAP	Date Open: 03/12/2018	Task #: 201802133034532H001	Request #: 20180213303453
Procedure: RNAV (GPS) RWY 36 AMDT 0D			Airport ID: KUBX	Airport: CUBA MUNI		Reimbursable #: NO
City: CUBA	ST: MO	GPS #:	Estimated Chart Date: 01/30/2020		FICO #:	
Fac ID: N/A		Fac. Type:			Specialist: HEIDI SNIDER	
Procedure Review						
	Rec'd	Rel'd	Full Name	Comments		
Lead:	03/27/2018	08/26/2019	DAVID DANNER	QUALITY		
QA:	08/26/2019			31 vbn 10/15/19		
Liaison:				CHECKED		
Procedure Comments:			ENROUTE-NON			
			Remark Type: INFORMATION			
ACTIVE DATA						
ABBR AMDT						
4D ACCURACY CODE VERIFICATION REQUESTED SEE 8260-9: OBS 17. TOWER 1359 MSL 380509.00N/0912354.00W (29-000138)						
CONTACT: DAVID DANNER 405.954.5077						

FIG

RNAV (GPS) RWY 36
CUBA MUNI (UBX)

MISSED APPROACH: Climb to 3000 direct JAXIP and hold.

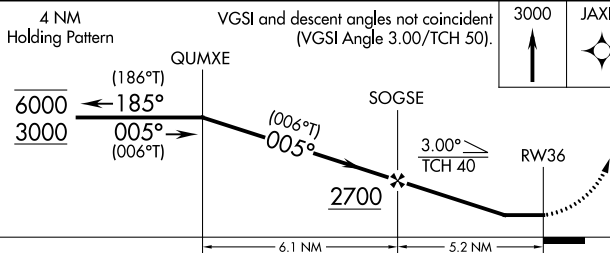
UNICOM
122.8 (CTAF) **L**

PROTOTYPE-NOT
FOR NAVIGATION

Δ^{1683}
(1064°T)
3000
063°
(18.6)
BACTA

Procedure NA for arrivals
at BUNKS
on V175 southeast bound,
and V72-190 eastbound.

Procedure NA for arrivals
at LENOX
on V238 southwest bound.



CUBA MUNI (UBX)

RNAV (GPS) RWY 36

INFORMATION ONLY

CUBA, MISSOURI

16259

WAAS CH 42624 W36A	APP CRS 005°	Rwy Idg 3420
	TDZE 1023	Apt Elev 1023

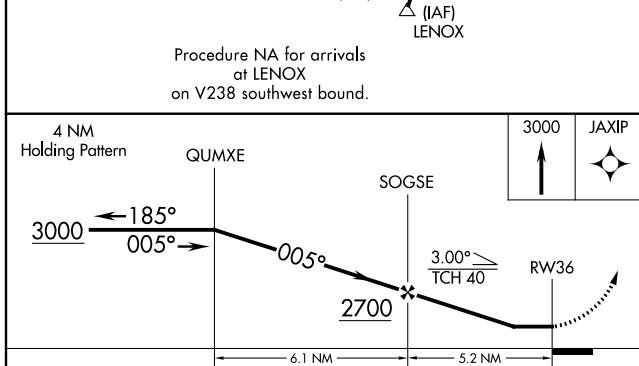
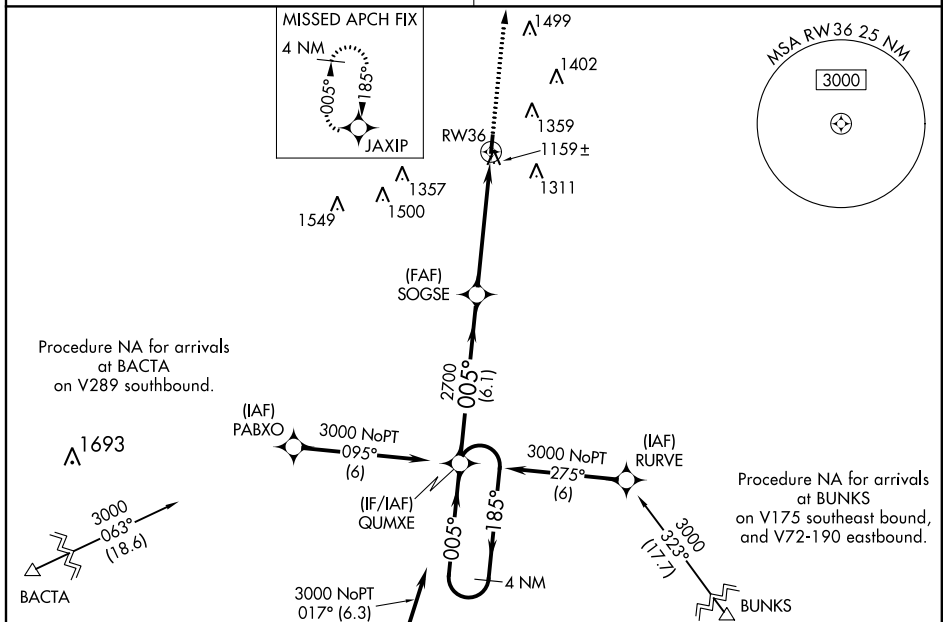
RNAV (GPS) **RWY 36**
CUBA MUNI (UBX)

NA DME/DME RNP-0.3 NA. Use Rolla National altimeter setting; when not received, use Fort Leonard Wood altimeter setting and increase all MDA 60 feet. Straight-in Rwy 36 NA at night, circling Rwy 36 NA at night. Rwy 36 helicopter visibility reduction below 1 SM NA.

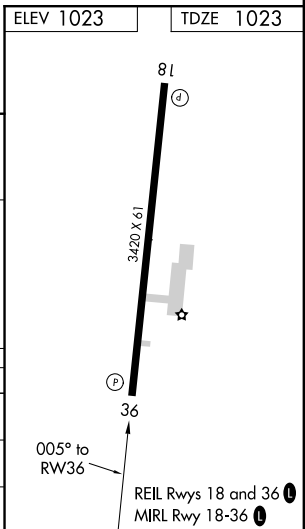
MISSED APPROACH: Climb to 3000 direct JAXIP and hold.

KANSAS CITY CENTER
128.35 284.67

UNICOM
122.8 (CTAF) 0



CATEGORY	A	B	C	D
LP MDA	1480-1	457 (500-1)	NA	
LNAV MDA	1480-1	457 (500-1)	NA	
CIRCLING	1580-1	557 (600-1)	NA	



CUBA, MISSOURI
Orig-C 15SEP16

38°04'N - 91°26'W

CUBA MUNI (UBX)
RNAV (GPS) **RWY 36**

NC-3, 15 SEP 2016 to 13 OCT 2016

NC-3, 15 SEP 2016 to 13 OCT 2016

