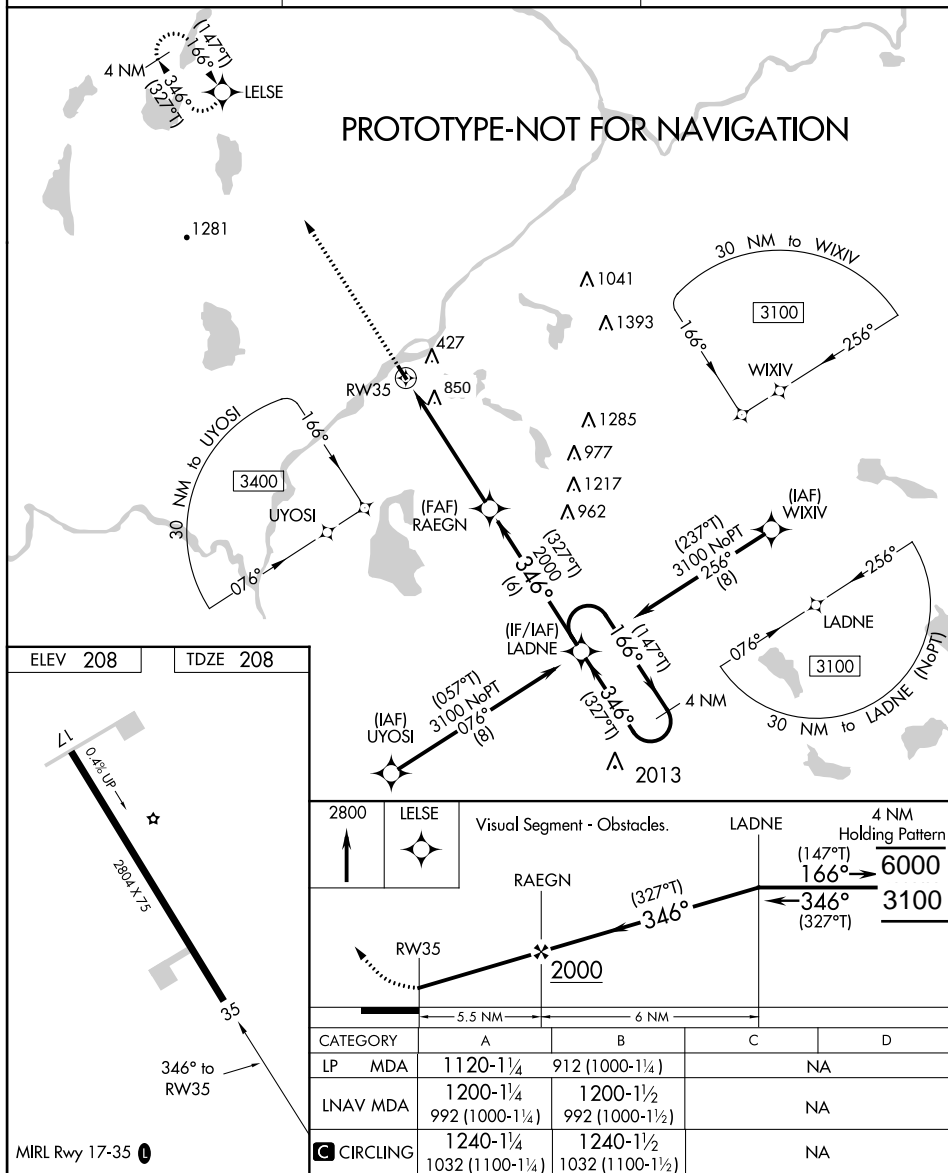


| | | | | | | |
|--|---------------|--------------------------------|---|---------------------------------|---------------------------------------|-------------------------------------|
| Flight Procedure Tracking Form | | Action: FLIGHT CHECK | Task Type: IAP | Date Open: 03/09/2018 | Task #: 201802133034531S001 | Request #: 20180213303453 |
| Procedure: RNAV (GPS) RWY 35 AMDT 1A | | | Airport ID: KLRG | Airport: LINCOLN RGNL | | Reimbursable #: NO |
| City: LINCOLN | ST: ME | GPS #: | Estimated Chart Date: 02/28/2019 | | FICO #: | |
| Fac ID: N/A | | Fac. Type: | | | Specialist: ANTHONY KACZKA | |
| Procedure Review | | | | | | |
| | Rec'd | Rel'd | Full Name | Comments | | |
| Lead: | 09/06/2018 | 11/21/2018 | WARDELL HENNING | | | |
| QA: | 11/21/2018 | | Wilson 11/30/2018 | | | |
| Liaison: | | | | | | |
| Procedure Comments: | | | Remark Type: INFORMATION | | | |
| <p>ABBREVIATED AMDT</p> <p>LNAV FAS OBST CHANGE WITH NO CHANGE TO THE MDA. CANCELS FDC 8/3987</p> <p>ACTIVE DATA USED FOR KLRG AIRPORT AND RUNWAYS</p> <p>CONTACT TEAM 3 SUB TEAM MANAGER WARDELL HENNING 405 954-9954</p> | | | | | | |

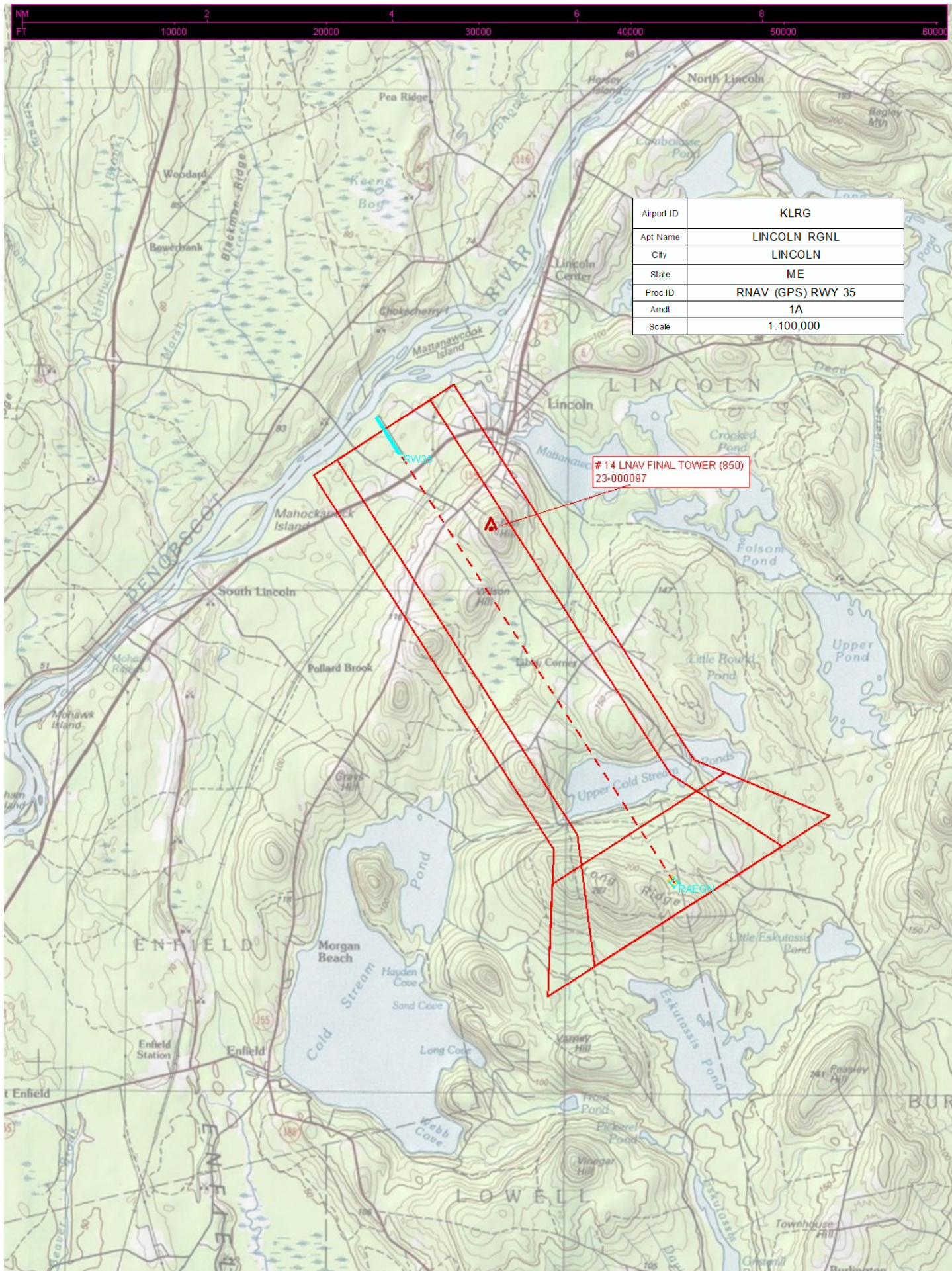
FIG

RNAV (GPS) RWY 35
LINCOLN RGNL (LRG)

MISSED APPROACH: Climb to 2800 direct LELSE and hold.

UNICOM
122.8 (CTAF) **L**

RNAV (GPS) RWY 35



| | |
|------------|-------------------|
| Airport ID | KLRG |
| Apt Name | LINCOLN RGNL |
| City | LINCOLN |
| State | ME |
| Proc ID | RNAV (GPS) RWY 35 |
| Amdt | 1A |
| Scale | 1:100,000 |

14 LNAV FINAL TOWER (850)
23-000097

OLD

LINCOLN, MAINE

AL-6774 (FAA)

16315

| | | | |
|--|------------------------|-----------------------------|---|
| WAAS CH 45736 W35A | APP CRS 346° | Rwy Idg TDZE Apt Elev | 2804 208 208 |
|--|------------------------|-----------------------------|---|

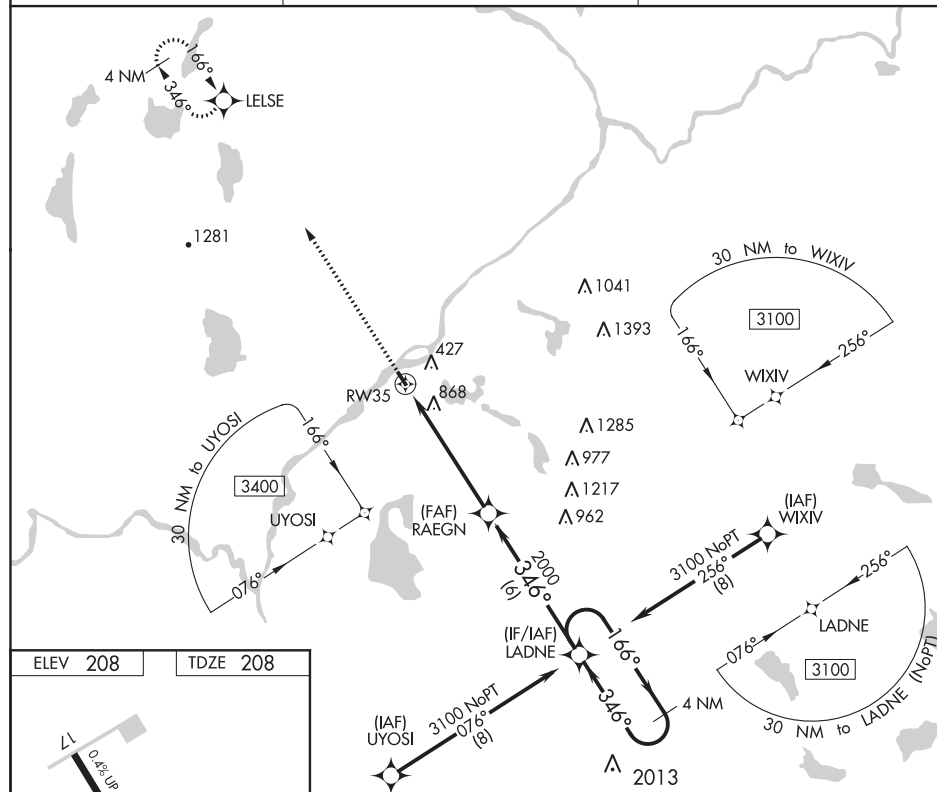
RNAV (GPS) RWY 35

LINCOLN RGNL (LRG)

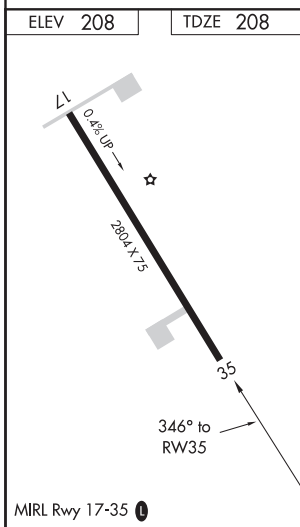
| | | |
|--------------------------|--|---|
| NA -31°C/-24°F | DME/DME RNP-0.3 NA. Procedure NA at night. Use Millinocket altimeter setting; when not received, use Bangor Int altimeter setting and increase all MDA 20 feet. Helicopter visibility reduction below 1 SM NA. | MISSED APPROACH: Climb to 2800 direct LELSE and hold. |
|--------------------------|--|---|

MILLINOCKET ASOS-3
135.225BOSTON CENTER
124.25 290.5UNICOM
122.8 (CTAF) 0

NE-1, 13 SEP 2018 to 11 OCT 2018



NE-1, 13 SEP 2018 to 11 OCT 2018



| | | | |
|--------------|----------------|----------------|----------------------|
| 2800 | LELSE | LADNE | 4 NM Holding Pattern |
| ↑ | ★ | ★ | ★ |
| RW35 | | RAEGN | LADNE |
| 3.00° TCH 40 | | 2000 | 3100 |
| 5.5 NM | | 6 NM | |
| CATEGORY | A | B | C |
| LP MDA | 1120-1¼ | 912 (1000-1¼) | NA |
| LNAV MDA | 1200-1¼ | 1200-1½ | NA |
| | 992 (1000-1¼) | 992 (1000-1½) | |
| CIRCLING | 1240-1¼ | 1240-1½ | NA |
| | 1032 (1100-1¼) | 1032 (1100-1½) | |

LINCOLN, MAINE
Amdt 1 16OCT14

45°22'N-68°32'W

RNAV (GPS) RWY 35

LINCOLN RGNL (LRG)