

Flight Procedure Tracking Form		Action: AMENDMENT	Task Type: IAP	Date Open: 03/12/2018	Task #: 201802133034532O001	Request #: 20180213303453
Procedure: APPROACH ILS Y RWY 16 R AMDT 6A			Airport ID: KVNY	Airport: VAN NUYS		Reimbursable #: NO
City: VAN NUYS	ST: CA	GPS #:	Estimated Chart Date: 04/25/2019		FICO #:	
Fac ID: N/A		Fac. Type:		Specialist: KELLY DEAN		
Procedure Review						
	Rec'd	Rel'd	Full Name	Comments		
Lead:	04/02/2018			<div style="text-align: center;"> <div>QUALITY</div> <div>31 vbn 12/21/18</div> <div>CHECKED</div> </div>		
QA:						
Liaison:						
Procedure Comments: ENROUTE-NON Remark Type: INFORMATION P-NOTAM FDC 9/4516 POC FOR THIS ACTION IS DON LANIER 405-954-8242 FLIGHT INSPECTION COMPLETED BY GARY VEER (N57). CHANGE REQUESTED BY FLIGHT INSPECTION.						

OLD INFO ONLY

VAN NUYS, CALIFORNIA

AL-552 (FAA)

18116

LOC I-VNY <u>111.3</u>	APP CRS 164°	Rwy Idg TDZE Apt Elev	6569 793 802
----------------------------------	------------------------	-----------------------------	---

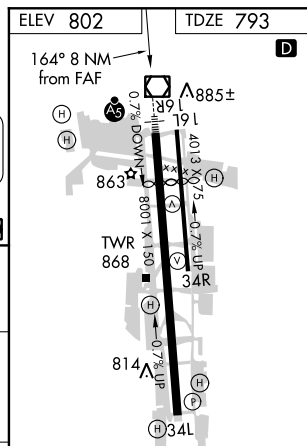
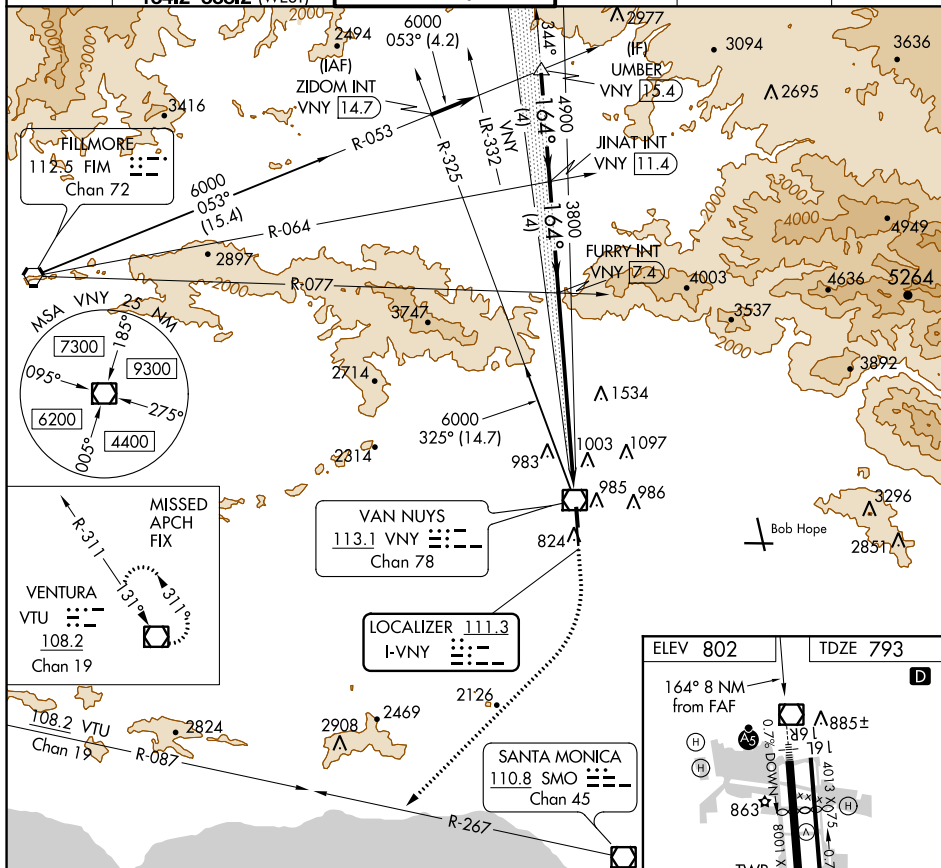
ILS Y RWY 16R
VAN NUYS (VNY)

- T** For inop MALSR, increase S-ILS all Cats visibility to 2 SM. When local altimeter setting not received, use Burbank altimeter setting and increase DA to 1480 feet and all Cats visibility to 1½ SM. Autopilot coupled approach NA below 1990.



MISSED APPROACH: Climb to 1700 then climbing right turn to 4600 on heading 210° and on SMO VOR/DME R-267 and on VTU VOR/DME R-087 to VTU VOR/DME and hold.

ATIS 127.55	SOCAL APP CON 120.4 360.6 (NORTH) 134.2 338.2 (WEST)	VAN NUYS TOWER ★ 119.3 (CTAF) 0 239.0	GND CON 121.7	CLNC DEL 126.6 239.0	UNICOM 122.95
----------------	--	--	------------------	-------------------------	------------------



UMBER VNY 15.4 6000 164° 4900 GS 3.50° TCH 49		JINAT INT VNY 11.4 3800		FURRY INT VNY 7.4		1700 ↑ 4600 hdg. 210°		SMO R-267		VTU R-087		VTU 	
CATEGORY		A		B		C		D					
S-ILS 16R				1461-1½		668 (700-1½)							

HIRL Rwy 16R-34L **L**
MIRL Rwy 16L-34R

VAN NUYS, CALIFORNIA

Amdt 6 21JUL16

34°13'N-118°29'W

VAN NUYS (VNY)

ILS Y RWY 16R

SW-3, 06 DEC 2018 to 03 JAN 2019