


<b>Flight Procedure Tracking Form</b>		<b>Action:</b> AMENDMENT	<b>Task Type:</b> IAP	<b>Date Open:</b> 03/09/2018	<b>Task #:</b> 201802133034531Y001	<b>Request #:</b> 20180213303453
<b>Procedure:</b> RNAV (GPS)-A AMDT 0A			<b>Airport ID:</b> KN06	<b>Airport:</b> LAUREL		<b>Reimbursable #:</b> NO
<b>City:</b> LAUREL	<b>ST:</b> DE	<b>GPS #:</b>	<b>Estimated Chart Date:</b> 02/28/2019		<b>FICO #:</b>	
<b>Fac ID:</b> N/A		<b>Fac. Type:</b>		<b>Specialist:</b> JAMES LAFFERTY		
<b>Procedure Review</b>						
	<b>Rec'd</b>	<b>Rel'd</b>	<b>Full Name</b>		<b>Comments</b>	
<b>Lead:</b>	07/16/2018					
<b>QA:</b>						
<b>Liaison:</b>						
<b>Procedure Comments:</b>			<b>ENROUTE-NON</b>			
			<b>Remark Type:</b> INFORMATION			
<p>ACTIVE DATA USED FOR KN06</p> <p>ABBREVIATED AMENDMENT TO CANCEL NOTAM FDC 8/3800</p> <p>FLIGHT INSPECTION REVIEW NOT REQUIRED - PROCESSED IAW AIRCRAFT OPERATIONS GROUP (AJW-33) MEMO, OCT 3, 2018.</p> <p>CONTACT DAVE TEFFETELLER AT 202-267-5177</p>						

## Instrument Flight Procedure Request

Date: 2/28/2018 Airport ID: KN06 State: DE City: Laurel

Airport Name: LAUREL

Requesting Organization: ☒ Aeronautical Information Services ☐ Flight Procedure Team

Request Type: Periodic Review Completed/Amdt Required/NOTAM Action Required

Add Procedure(s)

Add

PTS/APWS Project Required: Yes

Procedure(s):

RNAV (GPS)-A, AMDT 0

Remove

To remove a procedure, select it and click 'Remove.'

Reasons for Amendment:

☒ Other

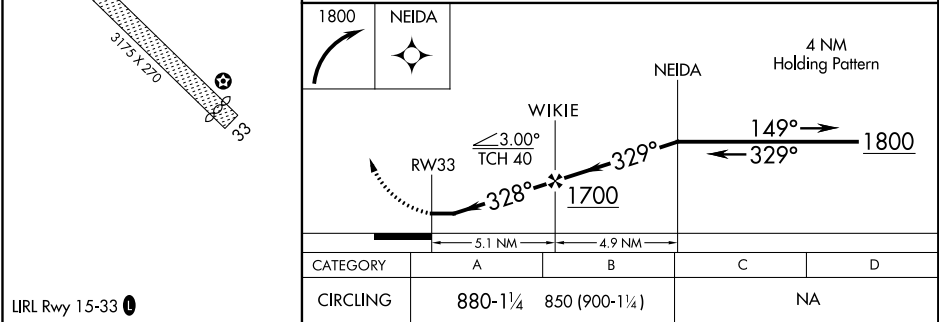
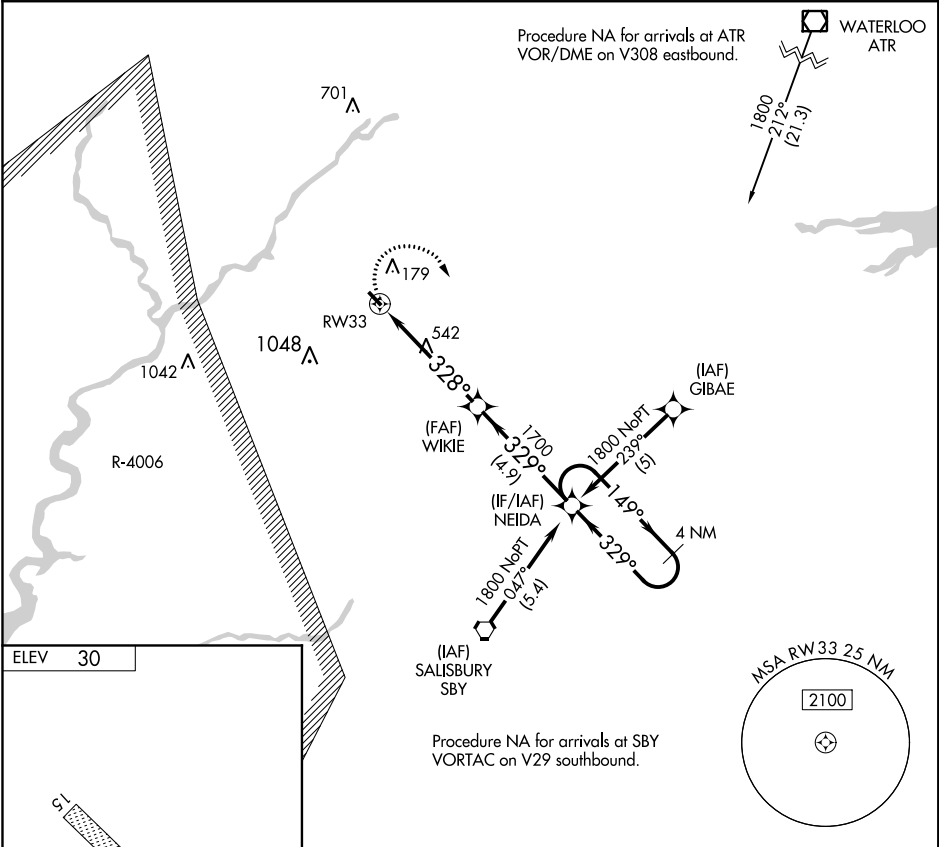
PILOT: DAN KIRBY ACFT N60PH: 850-307-3741 ACY FIFO  
NOTAM: !FDC 8/3197 N06 IAP LAUREL, Laurel, DE. RNAV (GPS)-  
A, ORIG...DELETE: DESCENT ANGLE 3.00/TCH 40. PROFILE  
NOTE: VISUAL SEGMENT - OBSTACLES. 1801092227-  
1808212227EST

APP CRS	Rwy Idg TDZE	N/A N/A
328°	Apt Elev	30

RNAV (GPS)-A  
LAUREL (N06)

<p><b>▼</b> Use Salisbury altimeter setting; when not received, use Georgetown altimeter setting. Procedure NA at night. DME/DME RNP-0.3 NA. Visibility reduction by helicopters NA.</p> <p><b>▲</b> NA</p>	<p>MISSED APPROACH: Climbing right turn to 1800 direct NEIDA and hold.</p>
---	--

<p>PATUXENT APP CON* 127.95 314.0</p>	<p>UNICOM 122.8 (CTAF) <b>0</b></p>
---	---



LIRL Rwy 15-33 **0**