


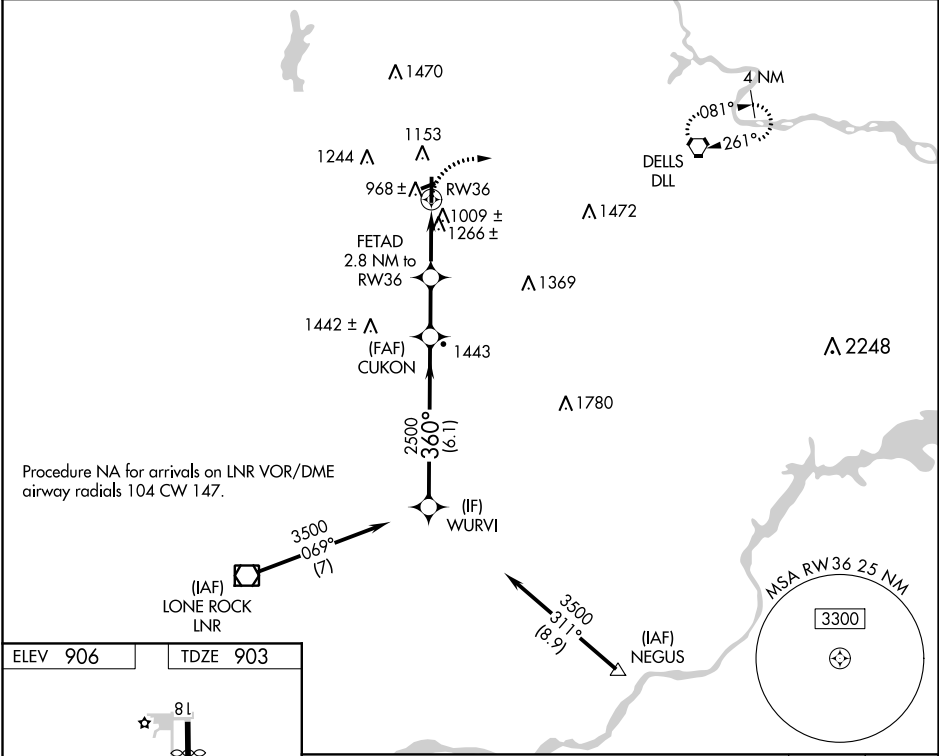
<b>Flight Procedure Tracking Form</b>		<b>Action:</b> FLIGHT CHECK	<b>Task Type:</b> IAP	<b>Date Open:</b> 03/09/2018	<b>Task #:</b> 2018021330345313001	<b>Request #:</b> 20180213303453
<b>Procedure:</b> RNAV (GPS) RWY 36 AMDT 0B			<b>Airport ID:</b> KC35	<b>Airport:</b> REEDSBURG MUNI		<b>Reimbursable #:</b> NO
<b>City:</b> REEDSBURG	<b>ST:</b> WI	<b>GPS #:</b>	<b>Estimated Chart Date:</b> 02/28/2019		<b>FICO #:</b>	
<b>Fac ID:</b> N/A		<b>Fac. Type:</b>			<b>Specialist:</b> MICHAEL GARRITY	
<b>Procedure Review</b>						
	<b>Rec'd</b>	<b>Rel'd</b>	<b>Full Name</b>	<b>Comments</b>		
<b>Lead:</b>	07/24/2018	10/24/2018	ALLAN WILL			
<b>QA:</b>	10/24/2018					
<b>Liaison:</b>						
<b>Procedure Comments:</b> ENROUTE-NON <b>Remark Type:</b> INFORMATION  ACTIVE DATA USED FOR KBKV AIRPORT AND RUNWAYS  CANCEL !FDC 8/0720  DAY BACK PNOTAM POC: DEZ SILAGYI, TEAM 2 SUBTEAM-A MANAGER, 405.954.5340, OR JULIE MORGAN, TEAM 2 MANAGER, 405.954.8568						

WAAS CH <b>82727</b> <b>W36A</b>	APP CRS <b>360°</b>	Rwy Idg <b>4100</b> TDZE <b>903</b> Apt Elev <b>906</b>
--	------------------------	---

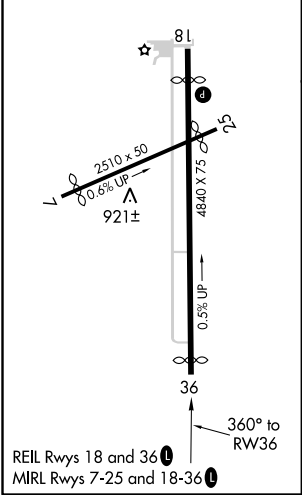
RNAV (GPS) RWY 36  
REEDSBURG MUNI (C35)

<p><b>▼</b> Use Baraboo altimeter setting; when not received, use Lone Rock altimeter setting and increase all MDA 60 feet; increase LNAV and Circling Cat B visibility to 1¼ .</p> <p><b>▲ NA</b> DME/DME RNP-0.3 NA. Procedure NA at night. Visibility reduction by helicopters NA.</p>	<p><b>MISSED APPROACH:</b> Climbing right turn to 3500 direct DLL VORTAC and hold.</p>
---	--

AWOS-3PT <b>118.95</b>	BARABOO AWOS-3 <b>118.325</b>	MADISON APP CON★ <b>135.45 343.7</b>	GCO <b>121.725</b>	UNICOM <b>122.8</b> (CTAF) <b>0</b>
---------------------------	----------------------------------	---	-----------------------	--



ELEV 906	TDZE 903
----------	----------



	WURVI	CUKON	FETAD	RW36
	3500	2500	1800	
	360°	300°	360°	
	6.1 NM	2.1 NM	2.8 NM	
CATEGORY	A	B	C	D
LP MDA	1560-1	657 (700-1)	NA	
LNAV MDA	1580-1	677 (700-1)	NA	
CIRCLING	1600-1	694 (700-1)	NA	

EC-3, 16 AUG 2018 to 13 SEP 2018

EC-3, 16 AUG 2018 to 13 SEP 2018

FIG

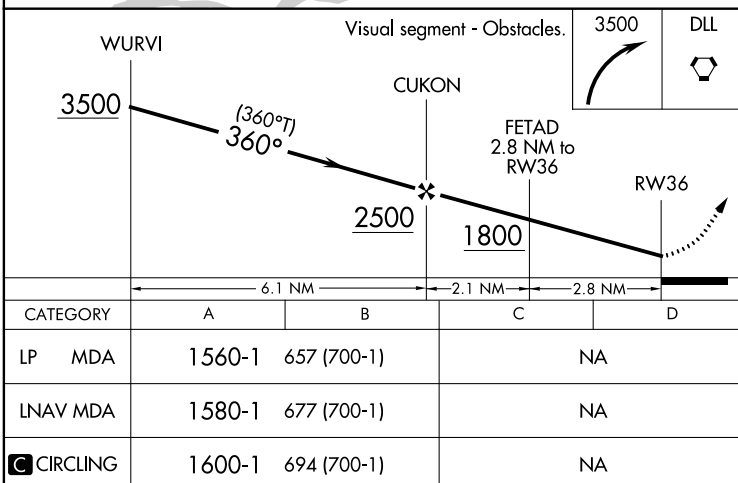
RNAV (GPS) RWY 36  
REEDSBURG MUNI (C35)

RNP APCH.

**T** Procedure NA at night. Rwy 36 helicopter visibility reduction below 1 SM NA. Circling Rwy 18, 25 NA at night.

**MISSED APPROACH:** Climbing right turn to 3500 direct DLL VORTAC and hold.

PROTOTYPE-  
NOT FOR NAVIGATION

REEDSBURG MUNI (C35)  
RNAV (GPS) RWY 36

AUTOMATED AL-6176 RNAV (GPS) RWY 36

EC-3

11/08/18

COMPILER: LH

REVIEWER: KMF

DBL CHKR:

EFF: FIG



