

Flight Procedure Tracking Form		Action: AMENDMENT	Task Type: IAP	Date Open: 05/03/2018	Task #: 201802132827682O003	Request #: 20180213282768
Procedure: VOR OR TACAN RWY 22 AMDT 10B			Airport ID: KDAG	Airport: BARSTOW-DAGGETT		Reimbursable #: NO
City: DAGGETT	ST: CA	GPS #:	Estimated Chart Date: 12/06/2018		FICO #:	
Fac ID: DAG		Fac. Type: VORTAC			Specialist: LUCAS MCCLOUD	
Procedure Review						
	Rec'd	Rel'd	Full Name	Comments		
Lead:	02/20/2018			QUALITY		
QA:				31 vbn 08/06/18		
Liaison:				CHECKED		
Procedure Comments:			Remark Type: INFORMATION			
<p>DAY BACK NOTAM (T-NOTAM TO P-NOTAM CONVERSION).</p> <p>CANCELS T-NOTAM 8/8509.</p> <p>FLIGHT INSPECTION REVIEW NOT REQUIRED - PROCESSED IAW AIRCRAFT OPERATIONS GROUP (AJW-33) MEMO, DEC 22, 2017.</p> <p>CONTACT: ROBERT HAMILTON 405-954-4608; AJV-5422 POC.</p>						

EXISTING

DAGGETT, CALIFORNIA

AL-104 (FAA)

17005

VORTAC DAG 113.2 Chan 79	APP CRS 224°	Rwy Idg TDZE 1918 Apt Elev 1930
--	------------------------	---

VOR or TACAN RWY 22

BARSTOW-DAGGETT (DAG)

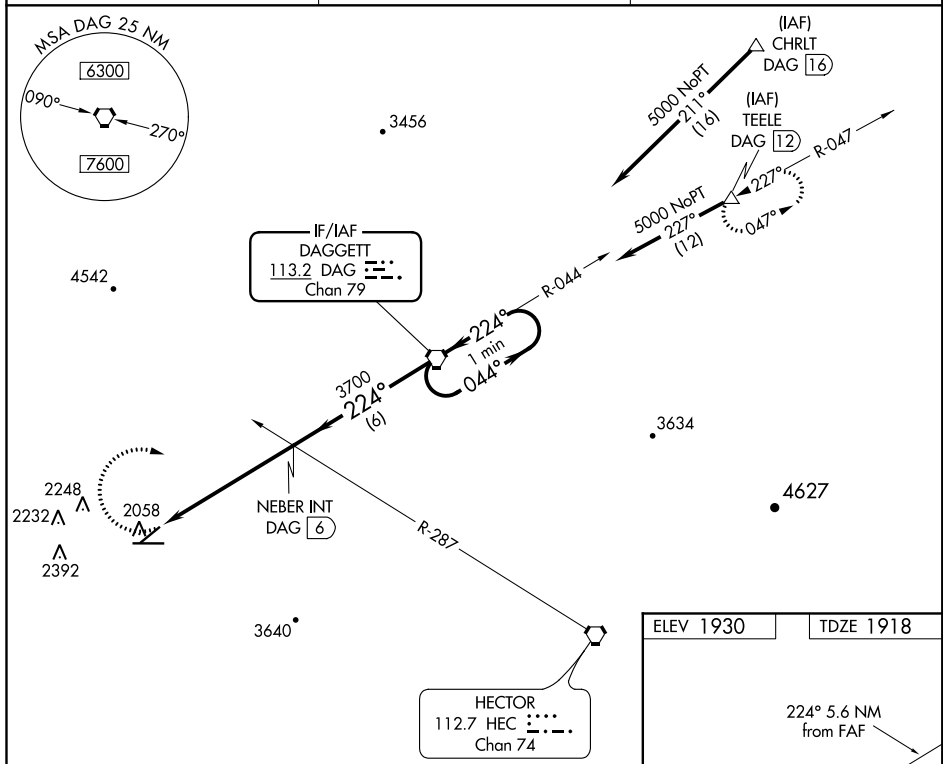
⚠ Circling NA for Cat D south of Rwy 8-26.
⚠ When local altimeter setting not received, use Victorville altimeter setting and increase all MDA 220 feet.

MISSED APPROACH: Climbing right turn to 5000 via heading 090° and via DAG VORTAC R-224 to DAG VORTAC and hold (TACAN aircraft climb to 6000 via DAG VORTAC R-047 to TEELE/DAG 12 DME and hold NE, LT 227° inbound). When authorized by ATC climb in holding to 7500.

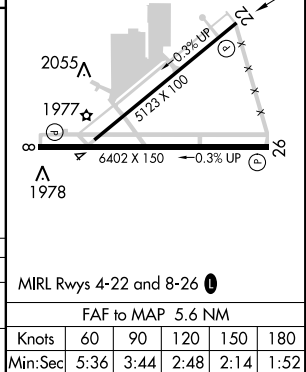
ASOS
132.175

LOS ANGELES CENTER
132.5 284.7

UNICOM
123.0 (CTAF) ①



5000 hdg 090°	DAG R-224	DAG ①	VGSI and descent angles not coincident (VGSI angle 3.00/TCH 49).	One Minute Holding Pattern
		NEBER INT DAG ⑥	DAG VORTAC	
	DAG 11.7	≤2.93° TCH 40	3700	044° → ← 224° 5000
		5.6 NM	6 NM	
CATEGORY	A	B	C	D
S-22	3160-1¼ 1242 (1300-1¼)	3440-1½ 1522 (1600-1½)	3440-3 1522 (1600-3)	3540-3 1622 (1700-3)
CIRCLING	3160-1¼ 1230 (1300-1¼)	3440-1½ 1510 (1600-1½)	3440-3 1510 (1600-3)	3540-3 1610 (1700-3)



DAGGETT, CALIFORNIA

Amdt 10A 02MAY13

34°51'N-116°47'W

BARSTOW-DAGGETT (DAG)

VOR or TACAN RWY 22

SW-3, 21 JUN 2018 to 19 JUL 2018

SW-3, 21 JUN 2018 to 19 JUL 2018

BARSTOW-DAGGETT (KDAG) DAGGETT, CA
CIRCLING 100K

CIRC A, TREE 2339

CIRC B, TREE 2559

CatC/D, TREE 3199

CIRC B,TREE 2559

BARSTOW-DAGGETT (KDAG) DAGGETT, CA
CIRCLING 100K

CatC/D, TREE 3199