




Flight Procedure Tracking Form		Action: AMENDMENT	Task Type: IAP	Date Open: 02/16/2018	Task #: 201802132827681Q001	Request #: 20180213282768
Procedure: RNAV (GPS) RWY 30 AMDT 0B			Airport ID: KGDV	Airport: DAWSON COMMUNITY		Reimbursable #: NO
City: GLENDIVE	ST: MT	GPS #:	Estimated Chart Date: 12/06/2018		FICO #:	
Fac ID: N/A		Fac. Type:		Specialist: GUY COPELAND		
Procedure Review						
	Rec'd	Rel'd	Full Name	Comments		
Lead:	02/16/2018			 Digitally signed by		
QA:				 DAVID W SAUER		
Liaison:				 Sep 20, 2018		
Procedure Comments:			Remark Type: INFORMATION			
<p>PROCESSED IAW AIRCRAFT OPERATIONS GROUP (AJW-33) MEMO, DEC 22, 2017 SUBJECT: FLIGHT INSPECTION REVIEW NOT REQUIRED.</p> <p>P-NOTAM</p> <p>CONTACT: PATRICK MULQUEEN 405-954-4073/ DAVID TEFFETELLER 301-427-4767</p> <p>ACTIVE DATA USED FOR KGDV AIRPORT AND RUNWAY</p>						

GLENDIVE, MONTANA

AL-6078 (FAA)

11237

WAAS CH 86623 W30A	APP CRS 306°	Rwy Idg THRE 2454 Apt Elev 2458
--	------------------------	---

RNAV (GPS) RWY 30

GLENDIVE/DAWSON COMMUNITY (G.D.V)

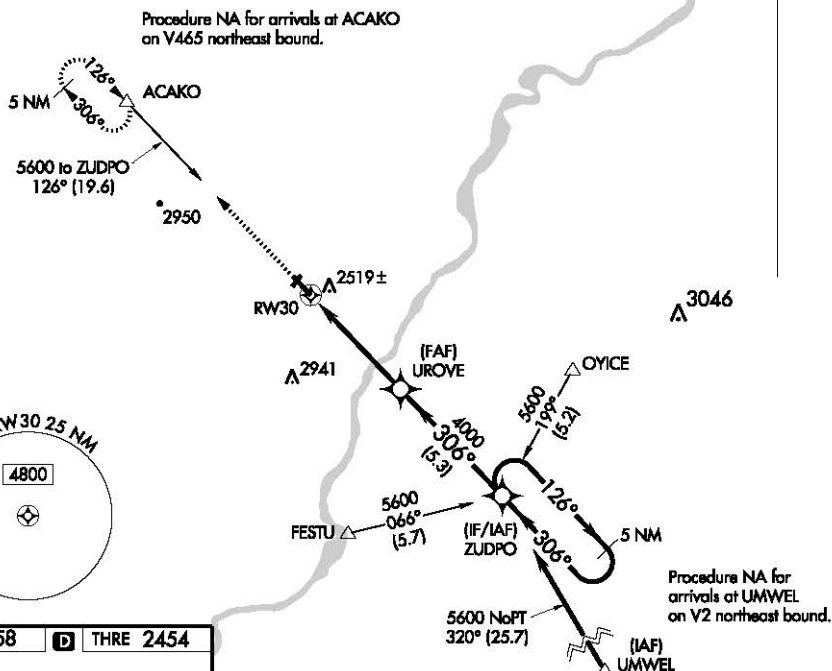
⚠ For uncompensated Baro-VNAV systems, LNAV/VNAV NA below -19°C (-2°F) or above 28°C (82°F). When local altimeter setting not received, procedure NA. When VGSi inop, procedure NA at night. DME/DME RNP-0.3 NA. Visibility reduction by helicopters NA.

MISSED APPROACH: Climb to 6000 direct ACAKO and hold, continue climb-in-hold to 6000.

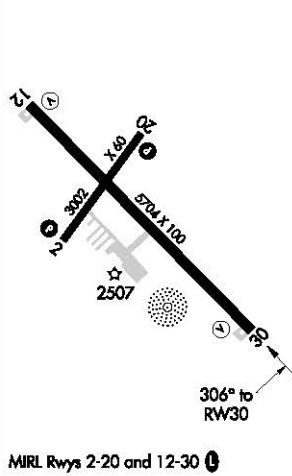
AWOS-3
135.075

GREAT FALLS RADIO
122.55

UNICOM
122.8 (CTAF) 0



ELEV 2458 **D** THRE 2454



6000 ↑	ACAKO △				
CATEGORY	A	B	C		D
LPV DA	2704-1 250 (300-1)				
LNAV/VNAV DA	2704-1 250 (300-1)				
LNAV MDA	2780-1 326 (400-1)				
CIRCLING	2840-1 382 (400-1)	2920-1 462 (500-1)	2920-1½ 462 (500-1½)	3020-2 562 (600-2)	

GLENDIVE, MONTANA
Orig 25AUG11

47°08'N-104°48'W

GLENDIVE/DAWSON COMMUNITY (G.D.V)
RNAV (GPS) RWY 30

NW-1, 03 MAY 2012 to 31 MAY 2012

NW-1, 03 MAY 2012 to 31 MAY 2012