




Flight Procedure Tracking Form		Action: AMENDMENT	Task Type: IAP	Date Open: 02/13/2018	Task #: 2018021328276802001	Request #: 20180213282768
Procedure: ILS OR LOC/DME RWY 2 AMDT 0C			Airport ID: KBMI	Airport: CENTRAL IL RGNL ARPT AT BLOOMINGTON-NORMAL		Reimbursable #: NO
City: BLOOMINGTON/NORM AL	ST: IL	GPS #:	Estimated Chart Date: 01/31/2019		FICO #:	
Fac ID: TXN		Fac. Type: ILS			Specialist: LEO PALMER	
Procedure Review						
	Rec'd	Rel'd	Full Name	Comments		
Lead:	06/11/2018	09/10/2018	ROBERT HAMILTON	 Digitally signed by		
QA:	09/10/2018			 DAVID W SAUER		
Liaison:				 Nov 26, 2018		
Procedure Comments:			Remark Type: INFORMATION			
<p>DAY BACK NOTAM: INCREASE ILS AND LOC VISIBILITY FROM 2400 TO 4000 PER AIRPORTS REQUEST IN ORDER TO RETAIN SMALLER RUNWAY PROTECTION AREA.</p> <p>- THE P-NOTAM CANCELS T-NOTAM 8/3964</p> <p>UPDATED NOTES PER 8260.19</p> <p>PROCESSED IAW AIRCRAFT OPERATIONS GROUP (AJW-33) MEMO, OCTOBER 3, 2018, SUBJECT: FLIGHT INSPECTION REVIEW NOT REQUIRED.</p> <p>CONTACT: DEZ SILAGYI (405)954-5340</p>						

LOC/DME I-TXN 111.9 Chan 56	APP CRS 021°	Rwy Idg 8000 TDZE 867 Apt Elev 871
---	------------------------	---

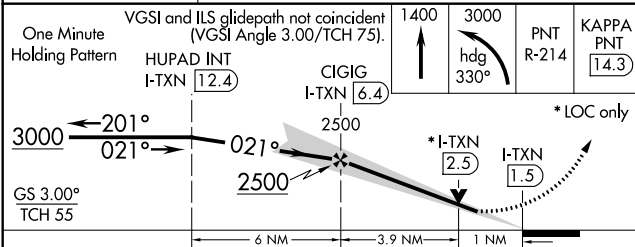
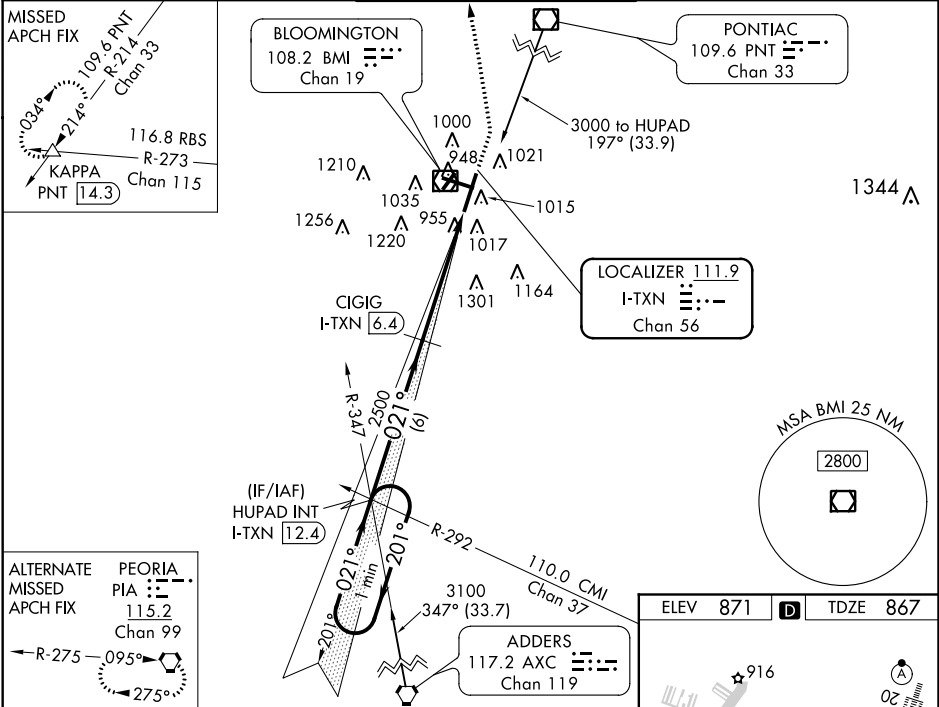
ILS or LOC/DME RWY 2
CENTRAL IL RGNL ARPT AT BLOOMINGTON-NORMAL (BMI)

⚠ VDP NA with General Downing-Peoria Intl altimeter setting. Autopilot coupled approach NA below 1050. For inoperative MALSR when using General Downing-Peoria Intl altimeter setting, increase S-ILS 2 all Cats visibility to RVR 5000. When local altimeter setting not received, use General Downing-Peoria Intl altimeter setting: increase all DA 116 feet and all MDA 120 feet; increase S-LOC Cat C and D visibility to RVR 5500 and Circling Cat C and D visibility ¼ mile.

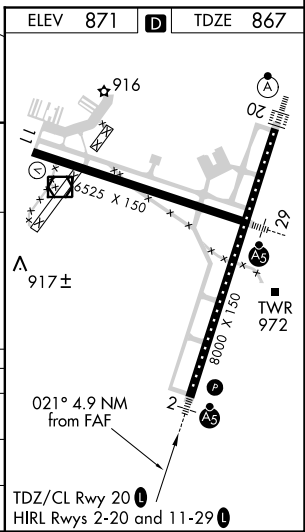
MALSR

MISSED APPROACH: Climb to 1400 then climbing left turn to 3000 via heading 330° and PNT VOR/DME R-214 to KAPPA INT/PNT 14.3 DME and hold.

ATIS 135.35	PEORIA APP CON 128.725 256.9	BLOOMINGTON TOWER ★ 124.6 (CTAF) 0 269.575	GND CON 121.65	UNICOM 122.95
-----------------------	--	--	--------------------------	-------------------------



CATEGORY	A	B	C	D
S-ILS 2	1067/24		200 (200-½)	
S-LOC 2	1260/24		393 (400-½)	1260/40 393 (400-¾)
C CIRCLING	1340-1 469 (500-1)		1620-2¼ 749 (800-2¼)	1620-2½ 749 (800-2½)



EC-3, 16 AUG 2018 to 13 SEP 2018

EC-3, 16 AUG 2018 to 13 SEP 2018