

<b>Flight Procedure Tracking Form</b>		<b>Action:</b> FLIGHT CHECK	<b>Task Type:</b> IAP	<b>Date Open:</b> 02/11/2018	<b>Task #:</b> 201802092916531N001	<b>Request #:</b> 20180209291653
<b>Procedure:</b> RNAV (GPS) RWY 5 AMDT 0D			<b>Airport ID:</b> KVDF	<b>Airport:</b> TAMPA EXECUTIVE		<b>Reimbursable #:</b> NO
<b>City:</b> TAMPA	<b>ST:</b> FL	<b>GPS #:</b>	<b>Estimated Chart Date:</b> 04/25/2019		<b>FICO #:</b> 1220363	
<b>Fac ID:</b> N/A		<b>Fac. Type:</b>		<b>Specialist:</b> JOSHUA LEETE		
<b>Procedure Review</b>						
	<b>Rec'd</b>	<b>Rel'd</b>	<b>Full Name</b>	<b>Comments</b>		
<b>Lead:</b>	02/11/2018	10/26/2018	ANDI LAU	<div style="border: 1px solid black; padding: 5px; display: inline-block;"> <b>APPROVED</b>  <small>By Steven M Barnett at 12:40 pm, Mar 12, 2019</small> </div> <div style="text-align: right; margin-top: -20px;"> <b>QUALITY</b>  <b>23</b>  <b>CHECKED</b> </div>		
<b>QA:</b>	10/26/2018	10/26/2018	ANDI LAU			
<b>Liaison:</b>	10/26/2018	10/29/2018	MARY MCDONALD			
<b>Procedure Comments:</b>			ENROUTE-NON	<b>Remark Type:</b> INFORMATION		
<p>P-NOTAM CANCELS FDC 8/2054</p> <p>FLIGHT CHECK REQUIRED FOR NEW FAS OBS: 240 MSL BLDG 275936N/0822212W.</p> <p>CONTACT: CASIMIR TABAKA (405) 954-7931.</p>						

<b>FIPC BASIC FORM</b>							
<b>PROCEDURE:</b> RNAV (GPS) RWY 5 ORIG D			<b>AIRPORT NAME:</b> TAMPA EXECUTIVE		<b>AIRPORT ID:</b> KVDF	<b>SPECIAL CONTROL NO:</b> AG-10-251-18	
<b>FAC ID:</b> KVDF05		<b>CITY:</b> TAMPA			<b>ST:</b> FL	<b>ORIG CHART DATE:</b> 04/25/2019	
<b>DFL TYPE:</b> PROC/S	<b>THIRD PARTY:</b> <input type="checkbox"/> YES	<b>EST. TIME ON SITE:</b> 0.4	<b>REIMB. NUMBER:</b>		<b>PTS TASK ID:</b> 201802092916531N001		
<b>PREFLIGHT NOTES</b>							
<b>REVIEWER:</b>					<b>DATE:</b>		
<b>COMMENTS:</b>					<b>CHECK ONE:</b>		
					<input type="checkbox"/> FLT CK REQ <input type="checkbox"/> NFCR <input type="checkbox"/> REJECT		
							<b>YES</b>
					<b>CPV COMPLETE?</b>		
<b>PROCEDURE RESULTS</b>							
<b>INSPECTION DATE:</b> 12/19/2018		<b>CREW #:</b> VN327	<b>N #:</b> N87	<b>INSTRUMENT PROCEDURE STATUS:</b> <input checked="" type="checkbox"/> SAT <input type="checkbox"/> SAT W/CHANGES <input type="checkbox"/> UNSAT		<b>ARINC CODING:</b> <input type="checkbox"/> SAT <input type="checkbox"/> SAT/GOLD <input type="checkbox"/> UNSAT	
<b>FLIGHT INSPECTOR SIGNATURE:</b> jeffrey eckman @ 12/19/2018 11:53			<b>PRINTED NAME:</b> ECKMAN, JEFFREY ALAN			<b>NOTAM INITIATED?</b> <input checked="" type="checkbox"/> YES <input type="checkbox"/> NO	
<b>FLIGHT INSPECTOR REMARKS:</b> Abbreviate amendment flight check completed SAT. New obstacles verified.							
<b>IN-FLIGHT OBSTACLE REPORT</b>							
<b>OBSTRUCTION ID #:</b>	<b>COORDINATES OR LOCATION:</b>		<b>GNSS ALTITUDE (MSL):</b>		<b>BAROMETRIC ALTITUDE (MSL):</b>		<b>HEIGHT ABOVE GROUND LEVEL:</b>

NEW FIG ON REQUEST

TAMPA, FLORIDA

AL-9241 (FAA)

17229

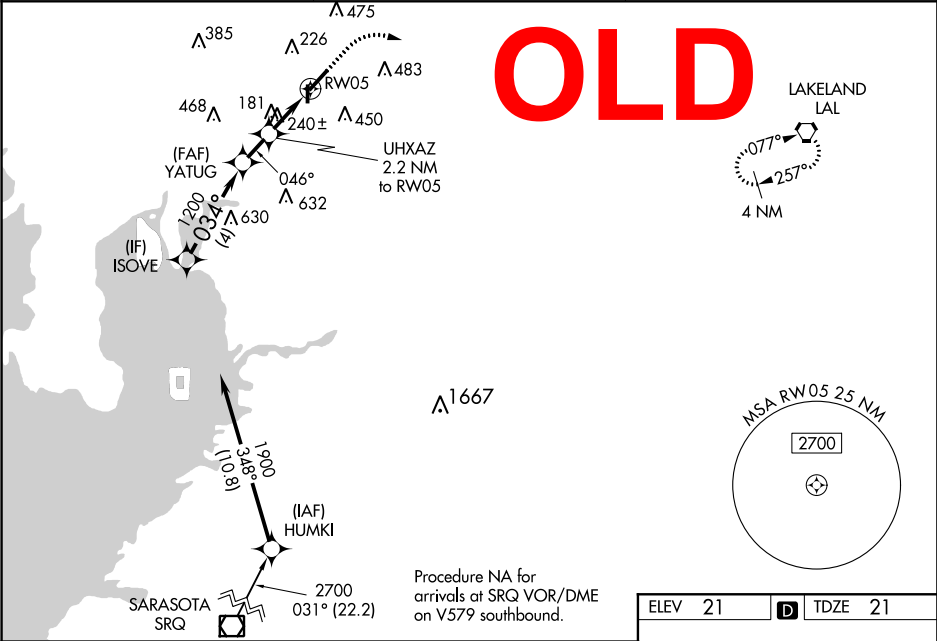
WAAS CH <b>97426</b> <b>W05A</b>	APP CRS <b>046°</b>	Rwy Idg TDZE Apt Elev	<b>4600</b> <b>21</b> <b>21</b>
--	------------------------	-----------------------------	---------------------------------------

RNAV (GPS) RWY 5  
TAMPA EXECUTIVE (VDF)

**⚠** DME/DME RNP-0.3 NA. Helicopter visibility reduction below ¾ SM NA. For uncompensated Baro-VNAV systems, LNAV/VNAV NA below 1°C (34°F) or above 54°C (130°F). When local altimeter setting not received, use Tampa Intl altimeter setting and increase all DA 25 feet and all MDA 40 feet; increase LNAV/VNAV all Cts visibility ½ mile, LNAV Cat C visibility ½ mile, and Circling Cat C visibility ¼ mile. Baro-VNAV and VDP NA when using Tampa Intl altimeter setting. Night landing: Rwy 18, 36 NA.

**MISSED APPROACH:**  
Climb to 600 then climbing right turn to 2000 direct LAL VORTAC and hold.

AWOS-3 <b>121.125</b>	TAMPA APP CON <b>119.9 290.3</b>	UNICOM <b>122.7 (CTAF)</b> <b>0</b>
--------------------------	-------------------------------------	--



ISOVE

GP 3.00°  
TCH 40

1900

034°

1200

YATUG

1200

UHHZ  
2.2 NM  
to RW05

046°

\*740

\*1.4 NM  
to RW05

RW05

\*LNAV only.

600

↑

2000

↗

LAL

⬢

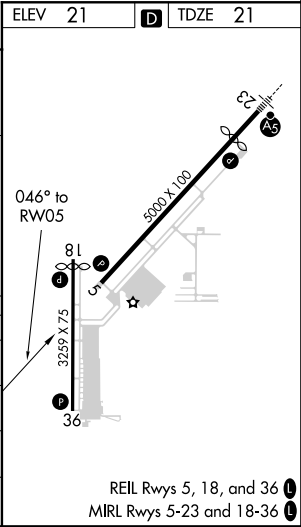
4 NM

1.4 NM

0.8 NM

1.4 NM

CATEGORY	A	B	C	D
LPV DA	271-7/8 250 (300-7/8)			NA
LNAV/VNAV DA	506-1 5/8 485 (500-1 5/8)			NA
LNAV MDA	500-1	479 (500-1)	500-1 3/8 479 (500-1 3/8)	NA
CIRCLING	500-1 479 (500-1)	760-7/8 739 (800-7/8)	760-2 739 (800-2)	NA



TAMPA, FLORIDA  
Orig-C 10NOV16

28°01'N-82°21'W

TAMPA EXECUTIVE (VDF)  
RNAV (GPS) RWY 5

TAMPA, FLORIDA

AL-9241 (FAA)

FIG

WAAS CH <b>97426</b> <b>W05A</b>	APP CRS <b>046°</b>	Rwy Idg TDZE Apt Elev	<b>4600</b> <b>21</b> <b>21</b>
--	------------------------	-----------------------------	---------------------------------------

# RNAV (GPS) RWY 5

TAMPA EXECUTIVE (VDF')

RNP APCH.

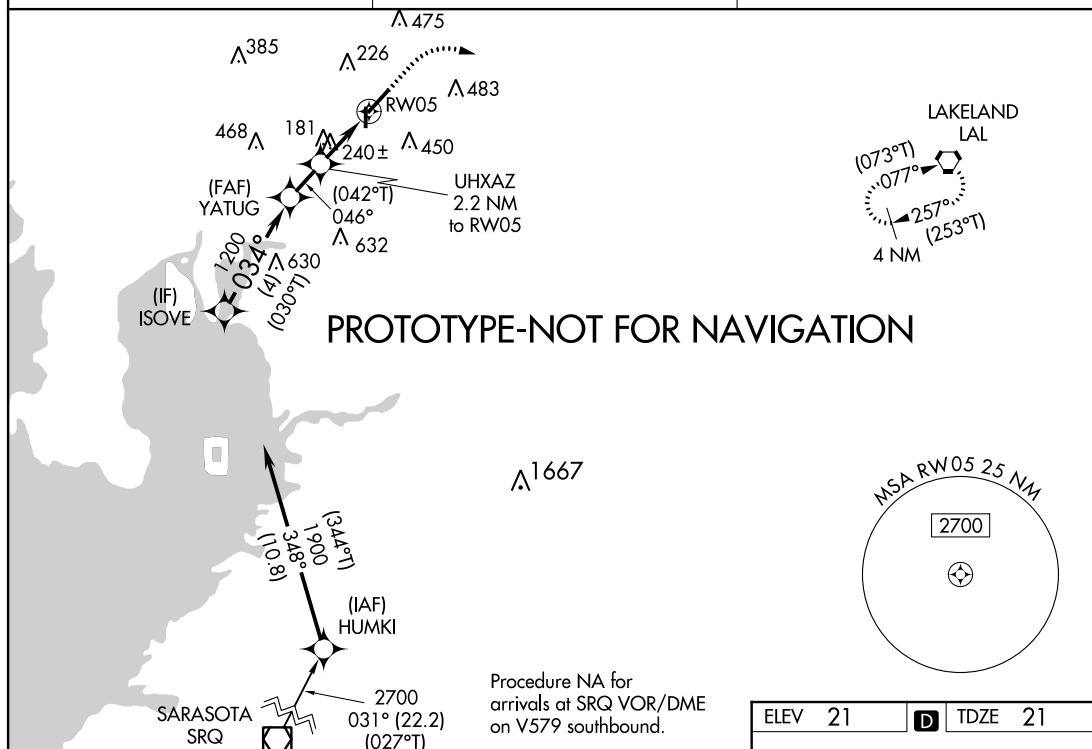
**⚠** DME/DME RNP-0.3 NA. Rwy 5 helicopter visibility reduction below  $\frac{3}{4}$  SM NA. For uncompensated Baro-VNAV systems, LNAV/VNAV NA below 1°C (34°F) or above 54°C (130°F). When local altimeter setting not received, use Tampa Intl altimeter setting and increase LPV DA to 316 feet, LNAV/VNAV DA to 507 feet; increase all MDAs 40 feet and increase LNAV and Circling Cat C visibilities  $\frac{1}{4}$  SM. Baro-VNAV and VDP NA when using Tampa Intl altimeter setting. Circling Rwy 18, 36 NA at night.

**MISSED APPROACH:**  
Climb to 600 then climbing right turn to 2000 direct LAL VORTAC and hold.

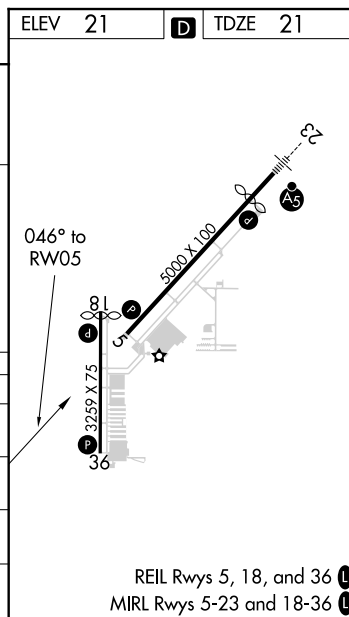
AWOS-3  
**121.125**

TAMPA APP CON  
**119.9 290.3**

UNICOM  
**122.7 (CTAF) 0**



VGSI and RNAV glidepath not coincident (VGSI Angle 3.02/TCH 45).				600	2000	LAL
ISOVE				*LNAV only.		
GP 3.00° TCH 40						
1900						
YATUG 1200						
UHHAZ 2.2 NM to RWY 5						
1200						
034°						
042°						
046°						
740						
4 NM						
1.4 NM						
0.8 NM						
1.4 NM						
CATEGORY	A	B	C	D		
LPV DA	271- $\frac{7}{8}$	250 (300- $\frac{7}{8}$ )		NA		
LNAV/VNAV DA	507-1 $\frac{5}{8}$	486 (500-1 $\frac{5}{8}$ )		NA		
LNAV MDA	500-1	479 (500-1)	500-1 $\frac{3}{8}$ 479 (500-1 $\frac{3}{8}$ )	NA		
CIRCLING	500-1 479 (500-1)	760- $\frac{7}{8}$ 739 (800- $\frac{7}{8}$ )	760-2 739 (800-2)	NA		



TAMPA, FLORIDA

Orig-D FIG

28°01'N-82°21'W

# TAMPA EXECUTIVE (VDF')

# RNAV (GPS) RWY 5

AUTOMATED AL-9241 RNAV (GPS) RWY 5

SE-3

10-24-2018

COMPILER: LS

REVIEWER:

DBL CHKR:

EFF DATE: FIG



Airport ID: KVDF	<u>NO</u>	<u>SEG</u>	<u>OBS</u>	<u>ELEV</u>
Apt Name: TAMPA EXECUTIVE	10	NEW FAS OBS	BLDG	240
City: TAMPA				
State: FL				
Proc ID: RNAV (GPS) RWY 5				
Amdt: ORIG-D				
Date: 31 JAN 2019				
Scale: 1:100,000				

