

Flight Procedure Tracking Form		Action: FLIGHT CHECK	Task Type: IAP	Date Open: 02/11/2018	Task #: 201802092916531M001	Request #: 20180209291653
Procedure: RNAV (GPS) RWY 26 AMDT 1C			Airport ID: KVAY	Airport: SOUTH JERSEY RGNL		Reimbursable #: NO
City: MOUNT HOLLY	ST: NJ	GPS #:	Estimated Chart Date: 11/08/2018		FICO #: 1214789	
Fac ID: N/A		Fac. Type:		Specialist: ROBERT COOK		
Procedure Review						
	Rec'd	Rel'd	Full Name	Comments		
Lead:	02/11/2018	06/29/2018	DONALD SMITH	QUALITY		
QA:	06/29/2018	06/29/2018	ANDI LAU	13		
Liaison:	06/29/2018	07/02/2018	MARY MCDONALD	CHECKED		
Procedure Comments:			ENROUTE-NON			
			Remark Type: INFORMATION			
<p>PROCESSED IAW AIRCRAFT OPERATIONS GROUP (AJW-33) MEMO, DEC 22, 2017, SUBJECT: FLIGHT INSPECTION REVIEW NOT REQUIRED.</p> <p>09/06/2018.THIS IS A UPDATED COPY OF THE FORM DEVELOPED ON 04/20/2018. 1.</p> <p>ADDED TDZE 53 TO FORM-CORRECT KNOWN SIAP DATA AUTO POPULATE ISSUE.</p> <p>9/13/2018: CORRECTED COPY TO CORRECT HOLD IN LIEU MINIMUM ALTITUDE.</p> <p>CONTACT DON SMITH, AJV-5412, 405-954-8222, DONALD.E.SMITH@FAA.GOV</p>						

Flight Procedure Tracking Form		Action: FLIGHT CHECK	Task Type: IAP	Date Open: 02/11/2018	Task #: 201802092916531M001	Request #: 20180209291653
Procedure: RNAV (GPS) RWY 26 AMDT 1C			Airport ID: KVAY	Airport: SOUTH JERSEY RGNL		Reimbursable #: NO
City: MOUNT HOLLY	ST: NJ	GPS #:	Estimated Chart Date: 10/11/2018		FICO #:	
Fac ID: N/A		Fac. Type:			Specialist: ROBERT COOK	
Procedure Review						
	Rec'd	Rel'd	Full Name	Comments		
Lead:	02/11/2018					
QA:						
Liaison:						
Procedure Comments: ENROUTE-NON Remark Type: INFORMATION PROCESSED IAW AIRCRAFT OPERATIONS GROUP (AJW-33) MEMO, DEC 22, 2017, SUBJECT: FLIGHT INSPECTION REVIEW NOT REQUIRED. CONTACT DON SMITH, AJV-5412, 405-954-8222, DONALD.E.SMITH@FAA.GOV						

WAAS CH 58323 W26A	APP CRS 262°	Rwy Idg TDZE Apt Elev	3881 53 53
--	------------------------	-----------------------------	---------------------------------------

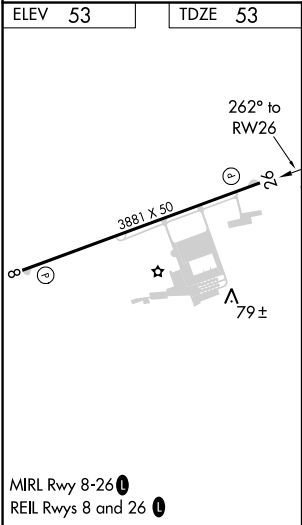
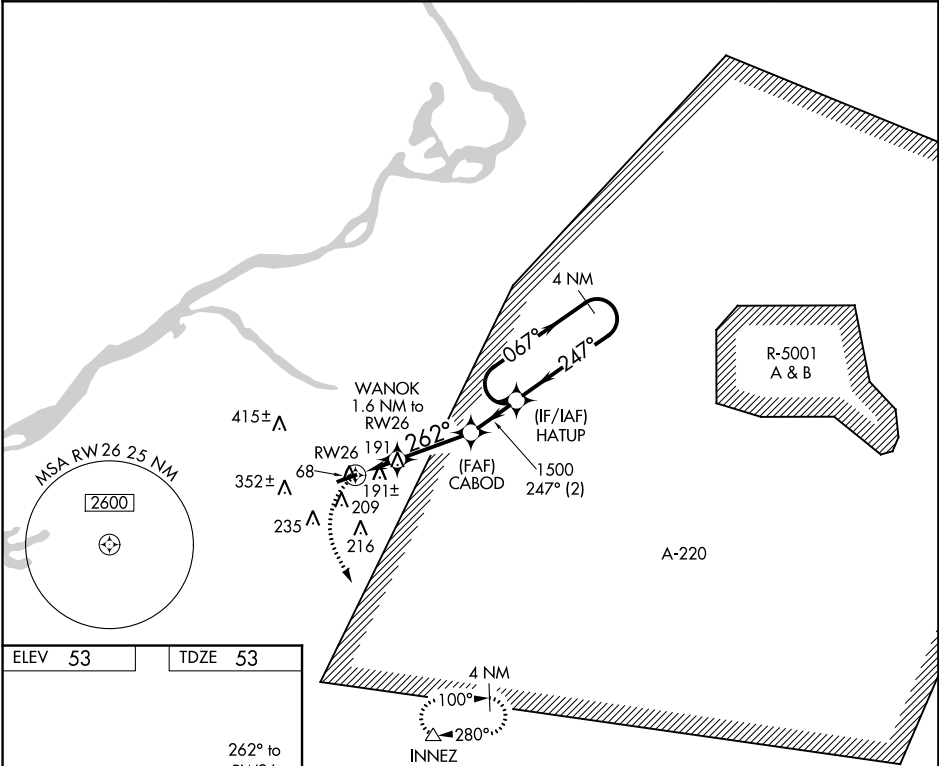
OLD

RNAV (GPS) RWY 26
SOUTH JERSEY RGNL (VAY)

Procedure NA at night. DME/DME RNP-0.3 NA. Helicopter visibility reduction below 1 SM NA. When local altimeter setting not received, use Northeast Philadelphia altimeter setting and increase all MDA 40 feet.

MISSED APPROACH:
Climbing left turn to 2000
direct INNEZ and hold.

ASOS 119.325	MC GUIRE APP CON 124.15 363.8	GCO 121.725	UNICOM 122.8 (CTAF)	123.3 0
------------------------	---	-----------------------	-------------------------------	----------------



RADAR REQUIRED				
2000 INNEZ				
HATUP 4 NM Holding Pattern				
CABOD 1500				
WANOK 1.6 NM to RW26				
RW26 600				
3.00° TCH 40				
1.6 NM 2.8 NM 2 NM				
CATEGORY	A	B	C	D
LP MDA	460-1	407 (500-1)	NA	
LNAY MDA	480-1	427 (500-1)	NA	
CIRCLING	520-1	467 (500-1)	NA	