

Flight Procedure Tracking Form		Action: AMENDMENT	Task Type: IAP	Date Open: 02/11/2018	Task #: 2018020929165316001	Request #: 20180209291653
Procedure: VOR-A AMDT 11A			Airport ID: KSMO	Airport: SANTA MONICA MUNI		Reimbursable #: NO
City: SANTA MONICA	ST: CA	GPS #:	Estimated Chart Date: 01/31/2019		FICO #:	
Fac ID: SMO		Fac. Type: VOR_DME			Specialist: LEO PALMER	
Procedure Review						
	Rec'd	Rel'd	Full Name	Comments		
Lead:	02/11/2018			QUALITY		
QA:				31 vbn 10/24/18		
Liaison:				CHECKED		
Procedure Comments:			ENROUTE-NON			
			Remark Type: INFORMATION			
<p>DAY BACK NOTAM: CANCELS T-NOTAM 8/9440.</p> <p>- RE-EVALUATED CIRCLING VISUAL AREA. NO 20:1'S IDENTIFIED. CHART NOTES REMOVED. NIGHT OPS RESTORED.</p> <p>FLIGHT INSPECTION REVIEW NOT REQUIRED - PROCESSED IAW AIRCRAFT OPERATIONS GROUP (AJW-333) MEMO, DEC 22, 2017</p> <p>CONTACT DEZ SILAGYI (405)954-5340</p>						

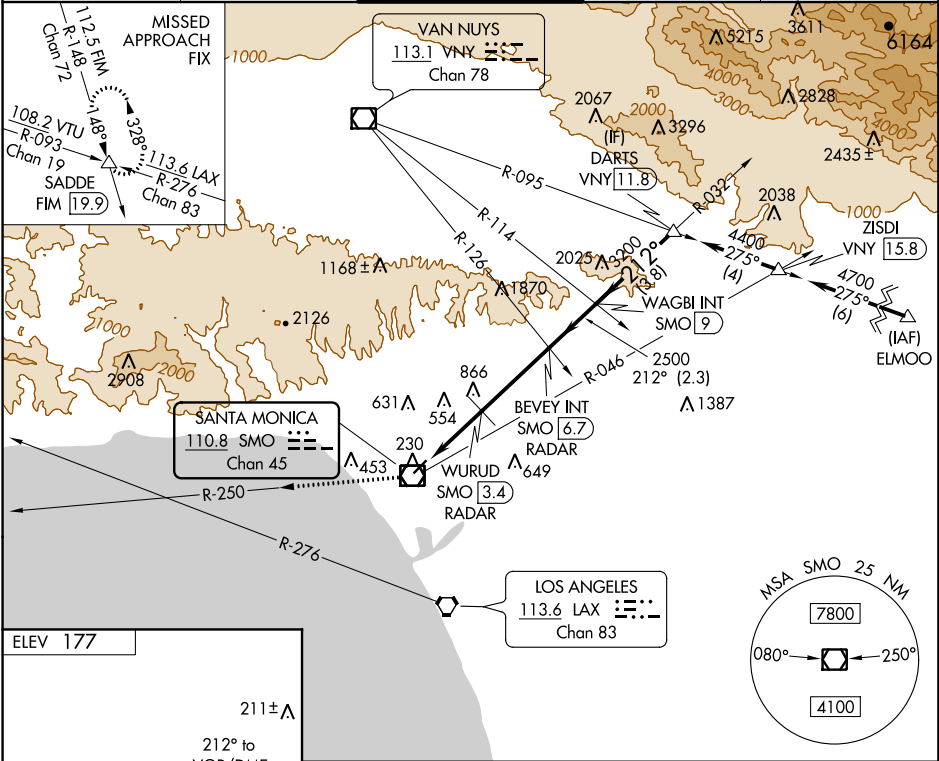
VOR/DME SMO	APP CRS	Rwy Idg	N/A
110.8	212°	TDZE	N/A
Chan 45		Apt Elev	177

VOR-A

SANTA MONICA MUNI (SMO)

<p>NA</p> <p>Helicopter visibility reduction below 1 SM NA. Procedure NA for arrivals at ELMOO on V186 southeast bound. Procedure NA at night. Circling NA NW of Rwy 3-21.</p>	<p>MISSED APPROACH: Climb to 5000 on SMO VOR/DME R-250 and on FIM VORTAC R-148 to SADDE INT/19.9 DME and hold, continue climb-in-hold to 5000.</p>
--	--

ATIS 119.15	SOCAL APP CON 128.5 235.975	SANTA MONICA TOWER * 120.1 (CTAF) 0 257.8	GND CON 121.9	UNICOM 122.95
-----------------------	---------------------------------------	---	-------------------------	-------------------------



VOR/DME

TWR 246

3800 X 150 1.2% UP

225

A 175

MIRL Rwy 3-21

REIL Rwy 21

5000 ↑ SMO R-250	FIM R-148	SADDE △	BEVEY INT SMO 6.7 RADAR	WAGBI INT SMO 9	DARTS VNY 11.8
SMO VOR/DME	WURUD SMO 3.4 RADAR				
	1540	2500	3200	4400	
3.4 NM	3.2 NM	2.3 NM	3.8 NM		
CATEGORY	A	B	C	D	
CIRCLING	1540-1¼ 1363 (1400-1¼)	1540-1½ 1363 (1400-1½)	1540-3	1363 (1400-3)	
WURUD FIX MINIMUMS					
CIRCLING	860-1	683 (700-1)	1180-3	1003 (1100-3)	

[Print](#)

Project Name: SMO SANTA MONICA MUNI, SANTA MONICA

Project Reason: Team 1 - T-notam issued to allow night operations to RWY 21. Obstacle 06-28235 Height has been corrected from 179ft to 174. Based on new height, the obstacle no longer penetrates the 20:1 Visual Surface for RWY 21. RWY 3 still has two penetrations.

Last Updated By: Marcello Sadorra

Last Updated At: 2018-05-18 19:07:41.738675

Status: Active

!FDC 8/9440 SMO IAP SANTA MONICA MUNI, Santa Monica, CA. VOR-A, AMDT 11... NOTE: CIRCLING RWY 3 NA AT NIGHT. NOTE: RWY 3 HELICOPTER VISIBILITY REDUCTION BELOW 1 SM NOT AUTHORIZED. DISREGARD NOTE: HELICOPTER VISIBILITY REDUCTION BELOW 1 SM NA. DISREGARD NOTE: PROCEDURE NA AT NIGHT. 1805181907-1812281906EST