

Flight Procedure Tracking Form		Action: FLIGHT CHECK	Task Type: IAP	Date Open: 02/06/2018	Task #: 2018020635160001001	Request #: 20180206351600
Procedure: RNAV (GPS) RWY 30 AMDT 1B			Airport ID: KFIG	Airport: CLEARFIELD-LAWRENCE		Reimbursable #: NO
City: CLEARFIELD	ST: PA	GPS #:	Estimated Chart Date: 11/08/2018		FICO #:	
Fac ID: N/A		Fac. Type:		Specialist: KWEKU DONKOR		
Procedure Review						
	Rec'd	Rel'd	Full Name	Comments		
Lead:	02/16/2018	07/16/2018	DAVID TEFFETELLER	<div>QUALITY</div> <div>10</div> <div>CHECKED</div>		
QA:	07/16/2018					
Liaison:						
Procedure Comments: ENROUTE-NON Remark Type: INFORMATION CANCELS FDC 8/3573 PERIODIC REVIEW RESULTING IN ABBREVIATED AMENDMENT - LPV, LNAV/VNAV, MA SECTION 2 PENETRATION CHANGED FROM CONTROLLING OBSTACLE CHANGED FROM "1626 TREE 410254N/0782418W" TO "2665 TOWER (42-002033) 410405N/0783107W". MA LEVEL SURFACE CONTROLLING OBSTACLE CHANGED FROM "2683 TOWER (42-001682)" TO "2723 TOWER(42-002063) 410426.50N/0783301.00W". UPDATE LPV AND LNAV/VNAV DA/HAT. CONTACT: PATRICK MULQUEEN 405-954-4073/DAVID TEFFETELLER 240-457-1998. <div style="text-align: right;">ARI SAVED 8/3/18</div>						

FIPC BASIC FORM							
PROCEDURE: RNAV (GPS) RWY 30 1B			AIRPORT NAME: CLEARFIELD-LAWRENCE		AIRPORT ID: KFIG	SPECIAL CONTROL NO: YG-08-063-18	
FAC ID: KFIG30.01		CITY: CLEARFIELD			ST: PA	ORIG CHART DATE: 11/08/2018	
DFL TYPE: PROC/S	THIRD PARTY: <input type="checkbox"/> YES	EST. TIME ON SITE: 0.4	REIMB. NUMBER:		PTS TASK ID: 2018020635160001001		
PREFLIGHT NOTES							
REVIEWER:					DATE:		
COMMENTS:					CHECK ONE:		
					<input type="checkbox"/> FLT CK REQ <input type="checkbox"/> NFCR <input type="checkbox"/> REJECT		
							YES
					CPV COMPLETE?		
PROCEDURE RESULTS							
INSPECTION DATE: 08/08/2018		CREW #: VN888	N #:	INSTRUMENT PROCEDURE STATUS: <input type="checkbox"/> SAT <input type="checkbox"/> SAT W/CHANGES <input checked="" type="checkbox"/> UNSAT		ARINC CODING: <input type="checkbox"/> SAT <input type="checkbox"/> SAT/GOLD <input type="checkbox"/> UNSAT	
FLIGHT INSPECTOR SIGNATURE: elizabeth whaley @ 08/08/2018 10:29			PRINTED NAME: AVN, CREWMEMBER 2				NOTAM INITIATED? <input type="checkbox"/> YES <input checked="" type="checkbox"/> NO
FLIGHT INSPECTOR REMARKS: No ARI submitted for this procedure.							
IN-FLIGHT OBSTACLE REPORT							
OBSTRUCTION ID #:	COORDINATES OR LOCATION:		GNSS ALTITUDE (MSL):		BAROMETRIC ALTITUDE (MSL):		HEIGHT ABOVE GROUND LEVEL:

OLD

CLEARFIELD, PENNSYLVANIA

AL-6207 (FAA)

16035

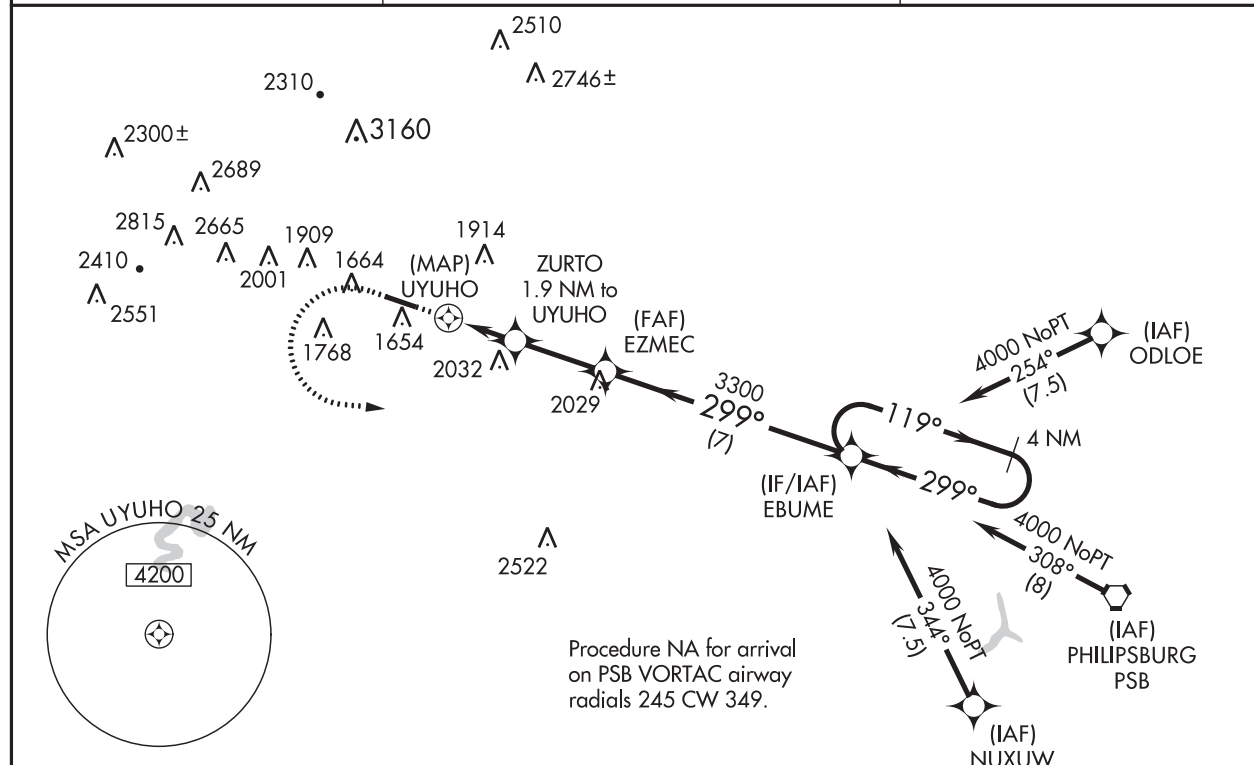
WAAS CH 58227 W30A	APP CRS 299°	Rwy Idg TDZE Apt Elev	4499 1516 1516
--	------------------------	-----------------------------	---

RNAV (GPS) RWY 30 CLEARFIELD-LAWRENCE (FIG)

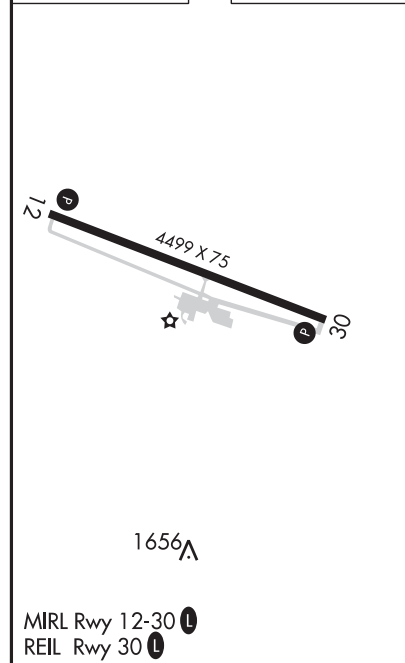
▼ Baro-VNAV NA when using Dubois Rgnl altimeter setting. For uncompensated Baro-VNAV systems, LNAV/VNAV NA below -18°C (0°F) or above 34°C (93°F). DME/DME RNP-0.3 NA. VDP NA with Dubois Rgnl altimeter setting. When local altimeter setting not received, use Dubois Rgnl altimeter setting and increase all DA 96 feet, increase all MDA 100 feet, increase LPV and LNAV/VNAV all Cats visibility 3/8 mile, increase LNAV Cats C/D visibility 1/4 mile, increase Circling Cat C visibility 1/2 mile and Cat D visibility 1/4 mile.

MISSED APPROACH:
Climb to 2200 then climbing left turn to 4000 direct EBUME and hold.

ASOS 119.275	NEW YORK CENTER 134.8 338.3	UNICOM 122.725 (CTAF) 0
------------------------	---------------------------------------	-----------------------------------



ELEV 1516	TDZE 1516
-----------	-----------



2200

↑

4000

↖

EBUME

✦

VGSI and RNAV glidepath not coincident (VGSI Angle 3.00/TCH 27).

4NM Holding Pattern

* LNAV only.

ZURTO 1.9 NM to UYUHO

EZMEC 3300

EBUME

119° → 4000

← 299°

GP 3.00° TCH 50

* 1.8 NM to RW30

UYUHO

RW30

* 2480

3300

299°

1

0.8

1.1 NM

2.6 NM

7 NM

CATEGORY	A		B	C	D
LPV DA	1841-1		325 (400-1)		
LNAV/VNAV DA	1886-1¼		370 (400-1¼)		
LNAV MDA	2120-1¼	604 (700-1¼)	2120-1¾	604 (700-1¾)	
CIRCLING	2180-1¼	664 (700-1¼)	2180-1¾	2340-2¾	824 (900-2¾)
			664 (700-1¾)		

CLEARFIELD, PENNSYLVANIA
Amdt 1A 11DEC14

41°03'N-78°25'W

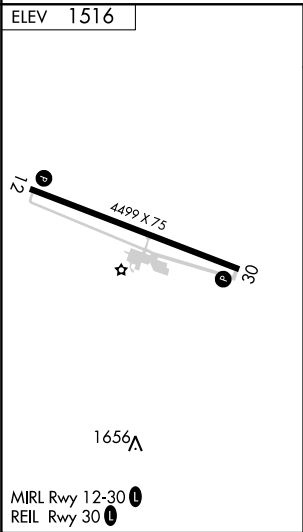
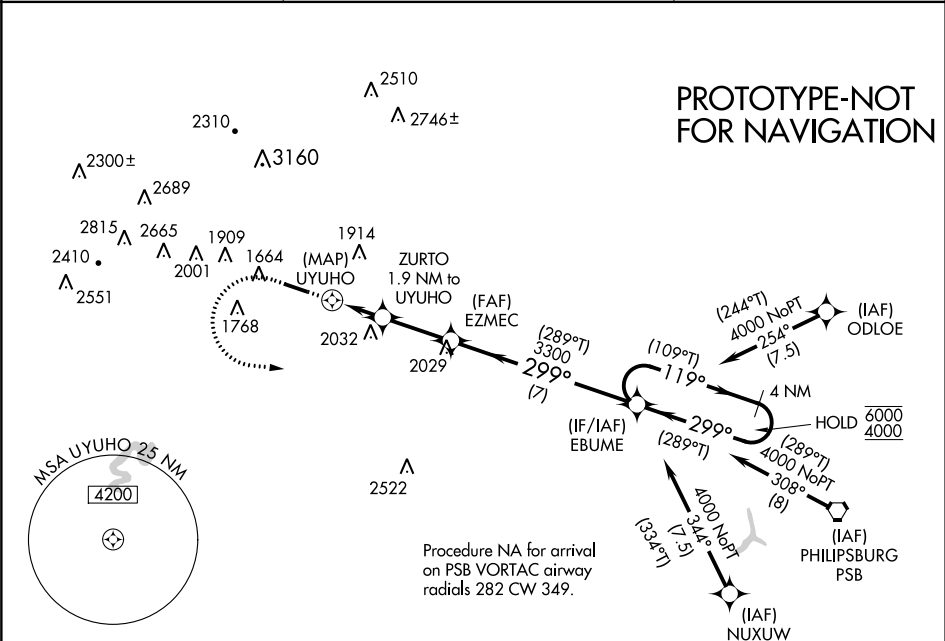
CLEARFIELD-LAWRENCE (FIG) **RNAV (GPS) RWY 30**




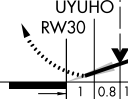
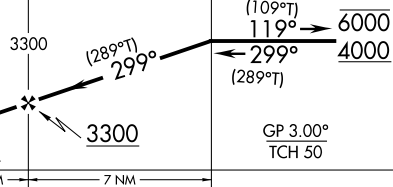
NE-4, 21 JUN 2018 to 19 JUL 2018

WAAS CH 58227 W30A	APP CRS 299°	Rwy Idg TDZE Apt Elev	4499 NA 1516
--	------------------------	-----------------------------	---

RNAV (GPS) RWY 30
CLEARFIELD-LAWRENCE (FIG)

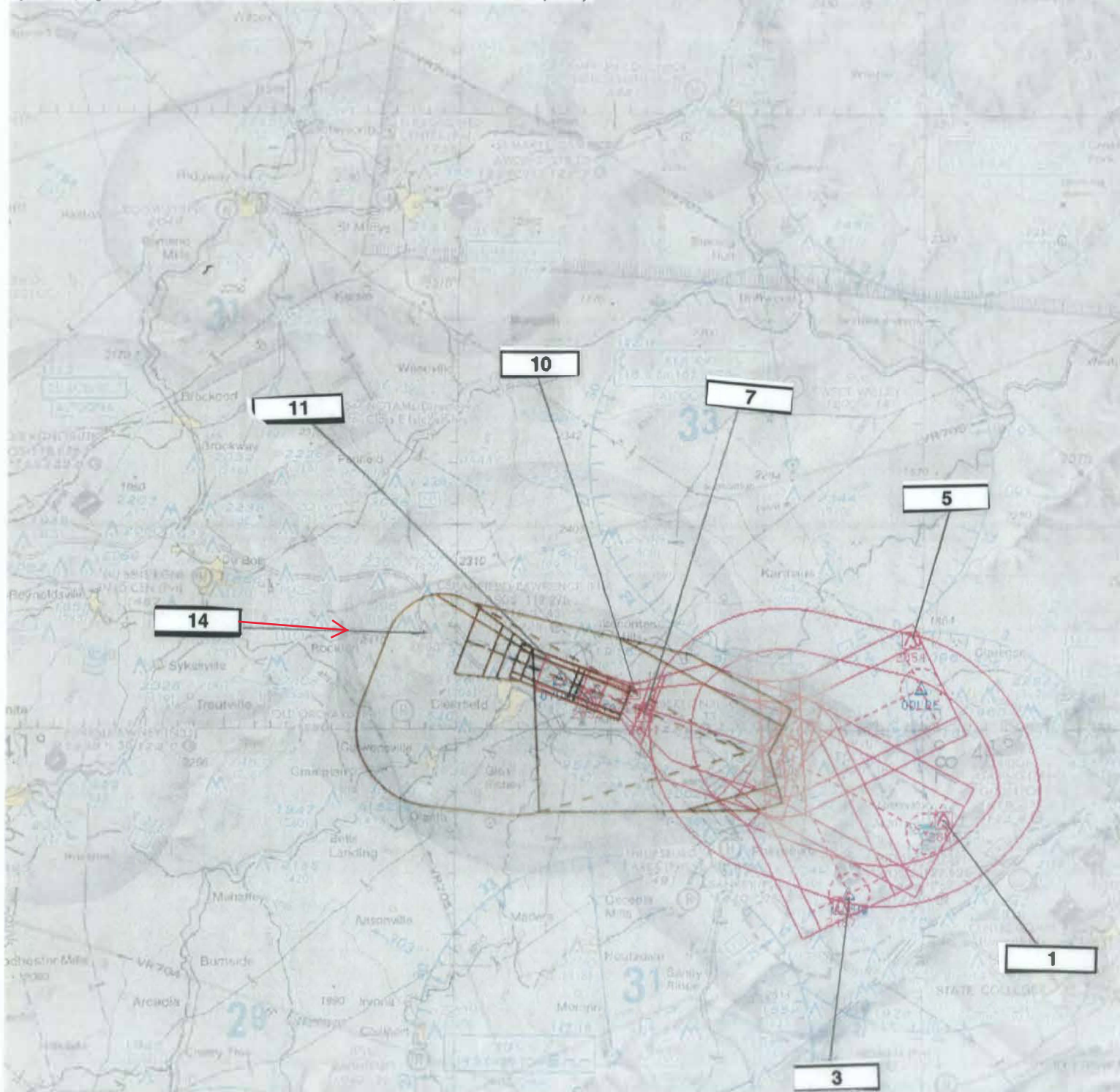
RNP APCH. ⚠ For uncompensated Baro-VNAV systems, LNAV/VNAV NA below 8°C or above 54°C.		MISSED APPROACH: Climb to 2200 then climbing left turn to 4000 direct EBUME and hold.
ASOS 119.275	NEW YORK CENTER 134.8 338.3	UNICOM 122.725 (CTAF) 0



2200	4000	EBUME	VGSI and RNAV glidepath not coincident (VGSI Angle 3.00/TCH 27).			
				4 NM Holding Pattern		
*LNAV only.		ZURTO 1.9 NM to UYUHO	EZMEC	EBUME		
		*1.8 NM to RW30	3300		6000 4000	
		UYUHO	*2480	3300	GP 3.00° TCH 50	
CATEGORY	A	B	C	D		
LPV DA	2008-1¾		492 (500-1¾)			
LNAV/ VNAV DA	2029-1¾		513 (600-1¾)			
LNAV MDA	2120-1¾	604 (700-1¾)	2120-1¾	604 (700-1¾)		
CIRCLING	2180-1¾	664 (700-1¾)	2180-1¾ 664 (700-1¾)	2340-2¾ 824 (900-2¾)		

NM 7 14 21 28 35 42 49
 FT 42000 84000 126000 168000 210000 252000 294000

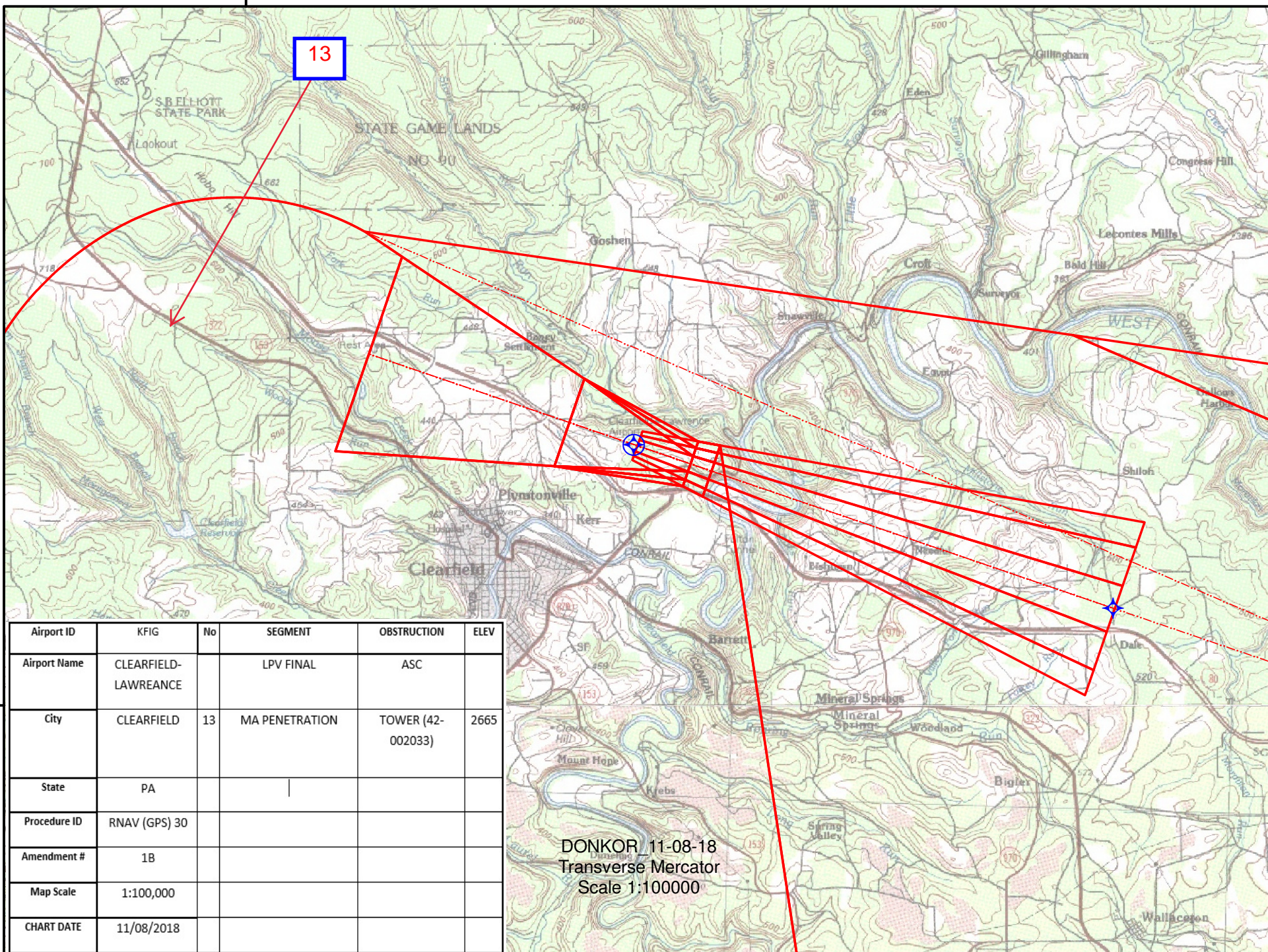
fpoaxn | flg30_lpv (PROD) | 24 Jan 2012 10:22:47 | 1" = 41666.7 feet (MAP)



Airport ID	KFIG	No	SEGMENT	OBSTRUCTION	ELEV
Airport Name	CLEARFIELD-LAWREANCE	1	FEEDER, HIL, MA HOLDING	TOWER	2855
City	CLEARFIELD	3	NUXUW INITIAL	AAO	2487
State	PA	5	ODLOE INITIAL	AAO	2054
Procedure ID	RNAV (GPS) 30	7	INTERMEDIATE	AAO	2041
Amendment #	1B	10	FINAL-LNAV	AAO	2119
Map Scale	1:500,000	11	LNAV STEPDOWN	TOWER	2032
CHART DATE	11/08/2018	14	MA LEVEL SURFACE	TOWER	2723

78°30'0"W

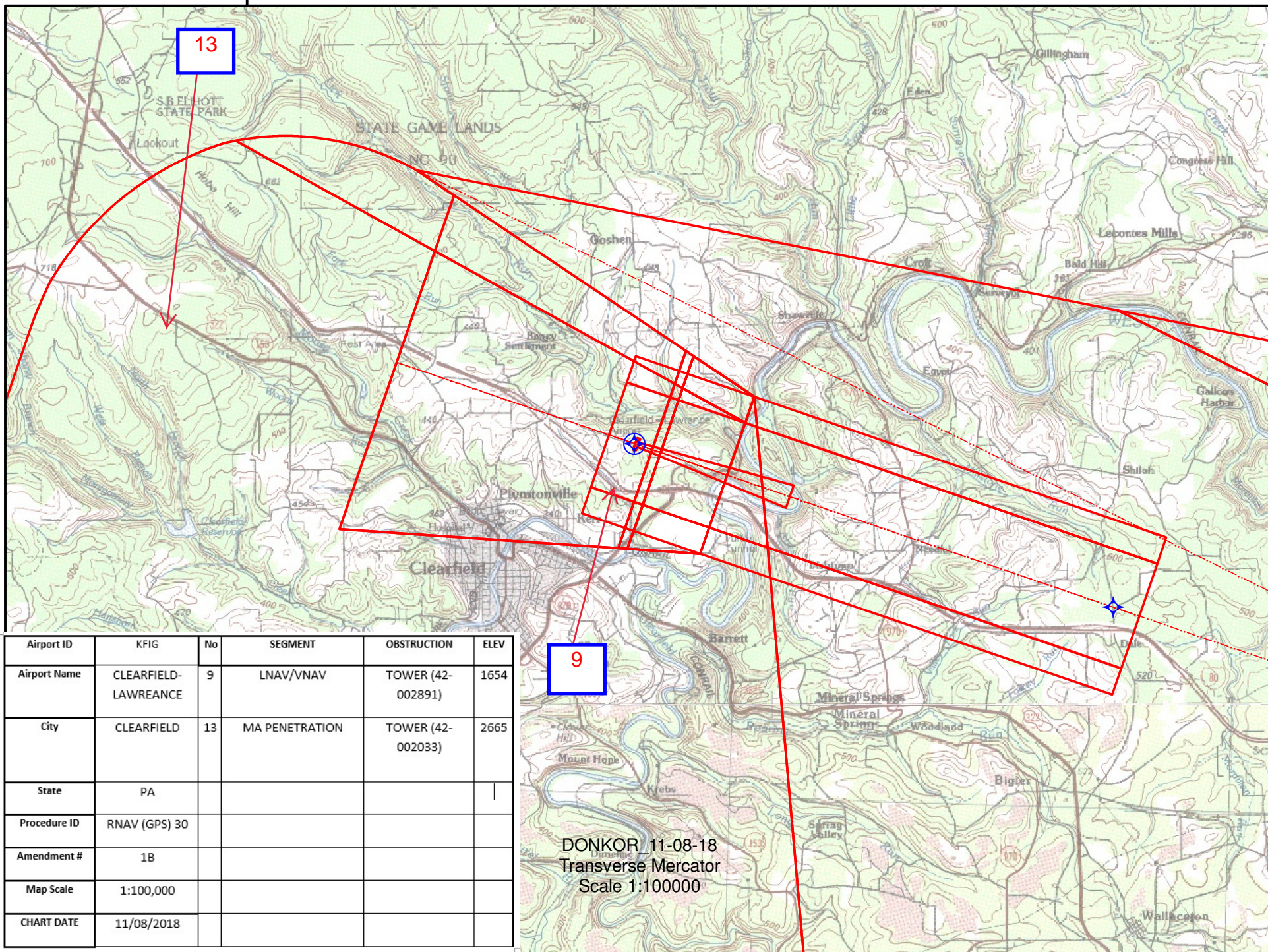
13



41°00'N

78°30'0"W

13



DONKOR_11-08-18
Transverse Mercator
Scale 1:100000

9

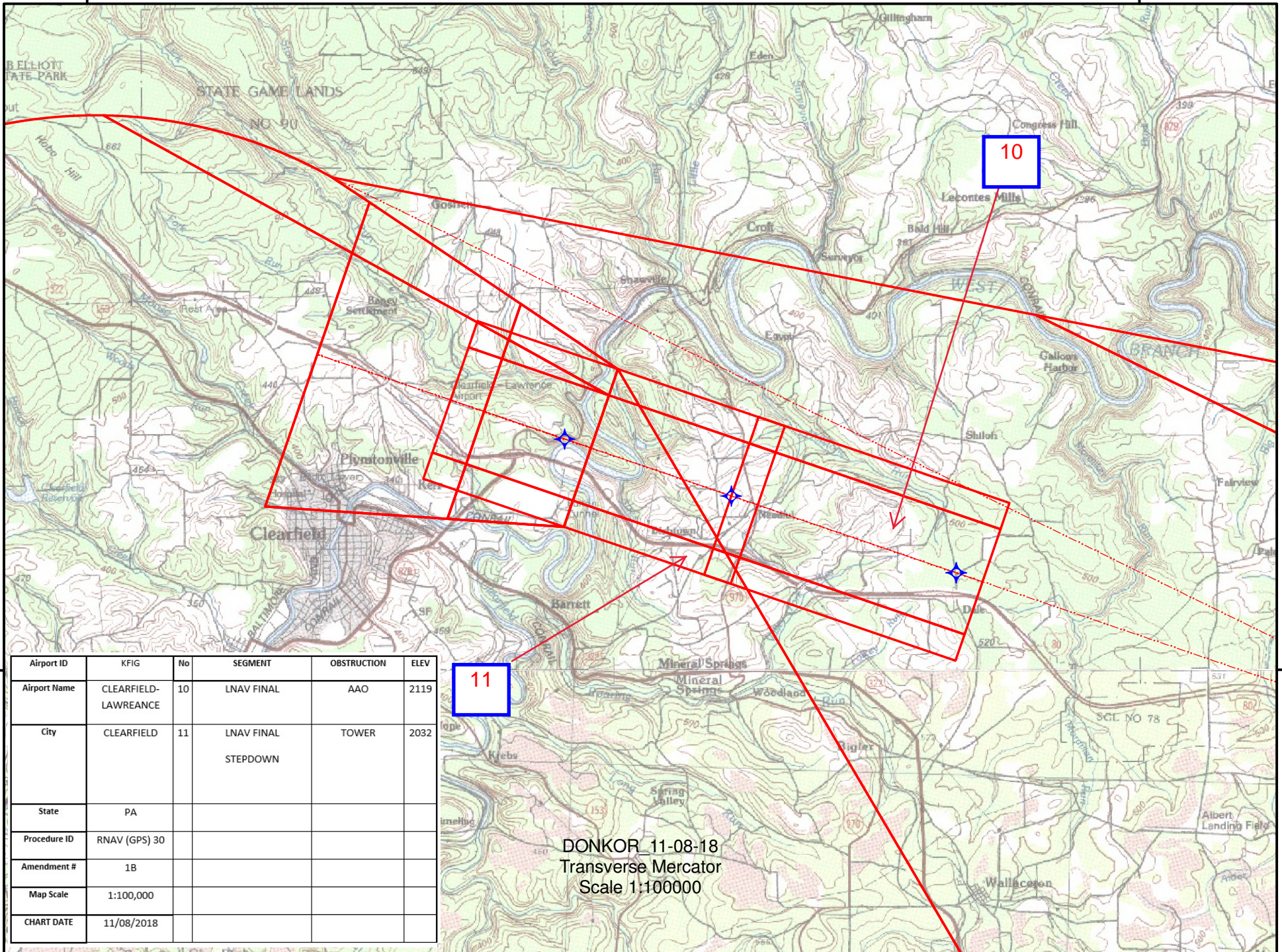
41°0'0"N

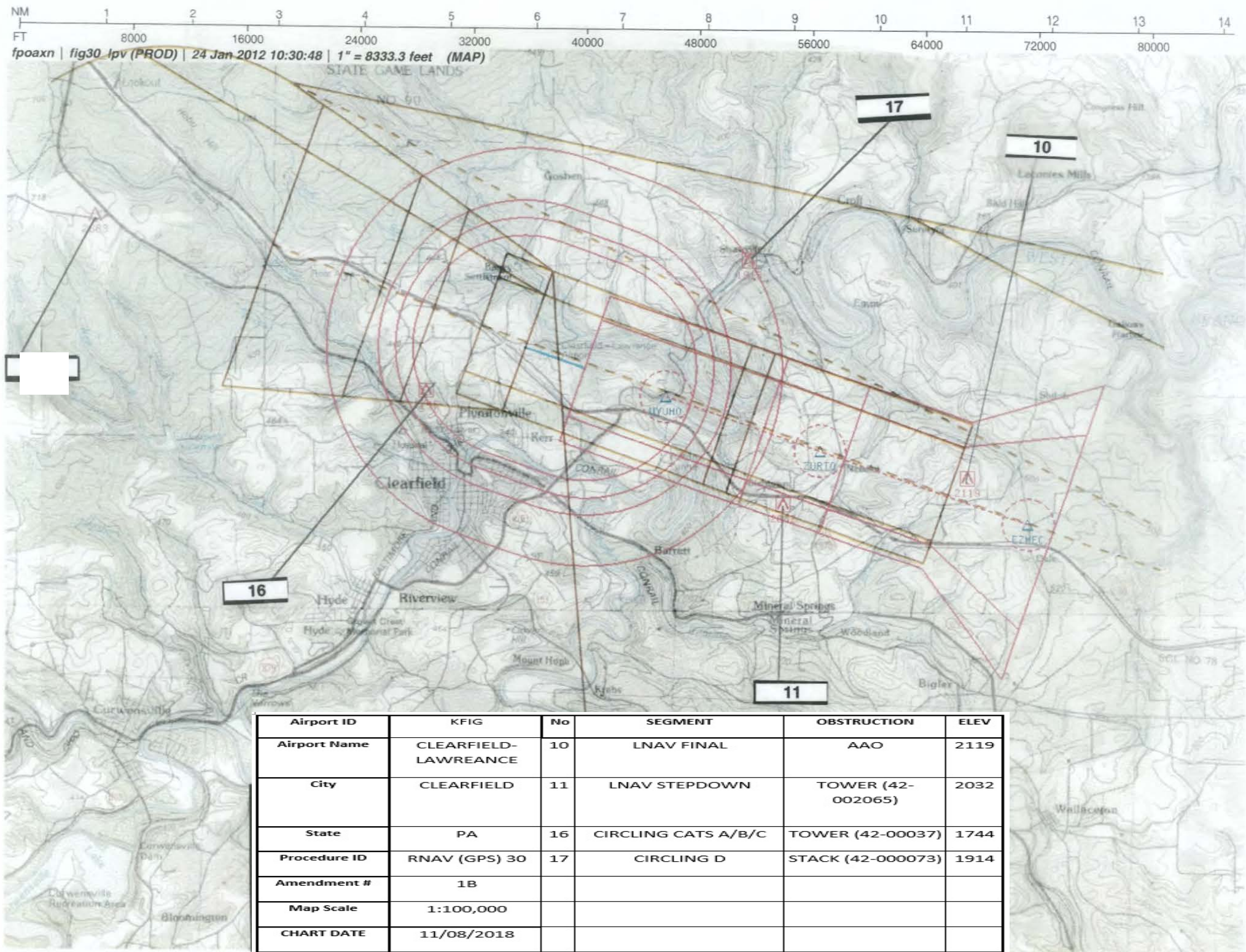
Airport ID	KFIG	No	SEGMENT	OBSTRUCTION	ELEV
Airport Name	CLEARFIELD-LAWREANCE	9	LNAV/VNAV	TOWER (42-002891)	1654
City	CLEARFIELD	13	MA PENETRATION	TOWER (42-002033)	2665
State	PA				
Procedure ID	RNAV (GPS) 30				
Amendment #	1B				
Map Scale	1:100,000				
CHART DATE	11/08/2018				

78°30'0"W

78°15'0"W

41°00'N





Airport ID	KFIG	No	SEGMENT	OBSTRUCTION	ELEV
Airport Name	CLEARFIELD-LAWREANCE	10	LNAV FINAL	AAO	2119
City	CLEARFIELD	11	LNAV STEPDOWN	TOWER (42-002065)	2032
State	PA	16	CIRCLING CATS A/B/C	TOWER (42-00037)	1744
Procedure ID	RNAV (GPS) 30	17	CIRCLING D	STACK (42-000073)	1914
Amendment #	1B				
Map Scale	1:100,000				
CHART DATE	11/08/2018				

Periodic Review

Bryan W. Blue

01-02-18

CLEARFIELD-LAWRENCE AIRPORT

CLEARFIELD, PA (KFIG)

RNAV _GPS_ RWY 30 AMDT 1A

Summary/Findings

FULL REVIEW

MAGVAR (AERODROME) IS IN TOLERANCE; CURRENT: W 10 2000, 2020 W 10

NOTAM REQUIRED: YES

INCREASE LPV DA TO 1842 FEET, LNV/VNAV DA TO 1897 FEET

AMENDMENT REQUIRED: YES

SECTION 2 (LNAV/VNAV CAT D) MISSED APPROACH PENETRATION OBS 42-002065, 2032MSL (1A) TOWER

ADDITIONAL INFORMATION: YES

1) USED 25.49 BANK ANGLE FOR MISSED APPROACH CONSTRUCTION

2) THOUGH IT PRUDENT TO INCREASE THE LNAV/VNAV DA RATHER THAN EXTENDING THE MISSED APPROACH SECTION-2 3.67NM. IPDS REQUIRED A CG TERMINATION ALTITUDE OF 2933FT FOR CAT D.

3) INCREASED THE LPV DA TO 1842 TO REMOVE A 1FT PENETRATION WHILE INCREASING THE LNAV/VNAV PENETRATION

REVIEWED BY: ANDRE L. MARSH (LEIDOS) 1/2/2018.

REVIEWED BY: BRYAN W BLUE FAA/FTE, NOTAM ISSUED

!FDC 8/3573 FIG IAP CLEARFIELD-LAWRENCE, Clearfield, PA. RNAV (GPS)
RWY 30, AMDT 1A... LPV DA 1842/HAT 326
ALL CATS. LNAV/VNAV DA 1897/HAT 381 ALL CATS.
1801311551-1809121551EST

Actions/Notes