


| | | | | | | |
|--|---------------|--------------------------------|---|---|---------------------------------------|-------------------------------------|
| Flight Procedure Tracking Form | | Action: FLIGHT CHECK | Task Type: IAP | Date Open: 04/23/2018 | Task #: 2018020634440201002 | Request #: 20180206344402 |
| Procedure: RNAV (GPS) RWY 35 AMDT 0A | | | Airport ID: KLYO | Airport: LYONS-RICE COUNTY MUNI | | Reimbursable #: NO |
| City: LYONS | ST: KS | GPS #: | Estimated Chart Date: 11/08/2018 | | FICO #: | |
| Fac ID: N/A | | Fac. Type: | | | Specialist: LUCAS MCCLOUD | |
| Procedure Review | | | | | | |
| | Rec'd | Rel'd | Full Name | Comments | | |
| Lead: | 02/07/2018 | 06/15/2018 | ROBERT HAMILTON |  | | |
| QA: | 06/15/2018 | | | | | |
| Liaison: | | | | | | |
| Procedure Comments: ENROUTE-NON Remark Type: INFORMATION FLT CHK: REQUEST TABLE TOP ONLY; FAS DATA/CRC REMAINDER CHANGED DUE TO RWY NUMBER CHANGE ONLY. PENDING KLYO AIRNAV DATA USED FOR AIRPORT AND RUNWAYS. CONTACT: ROBERT HAMILTON 405-954-4608; AJV-5422 POC. | | | | | | |

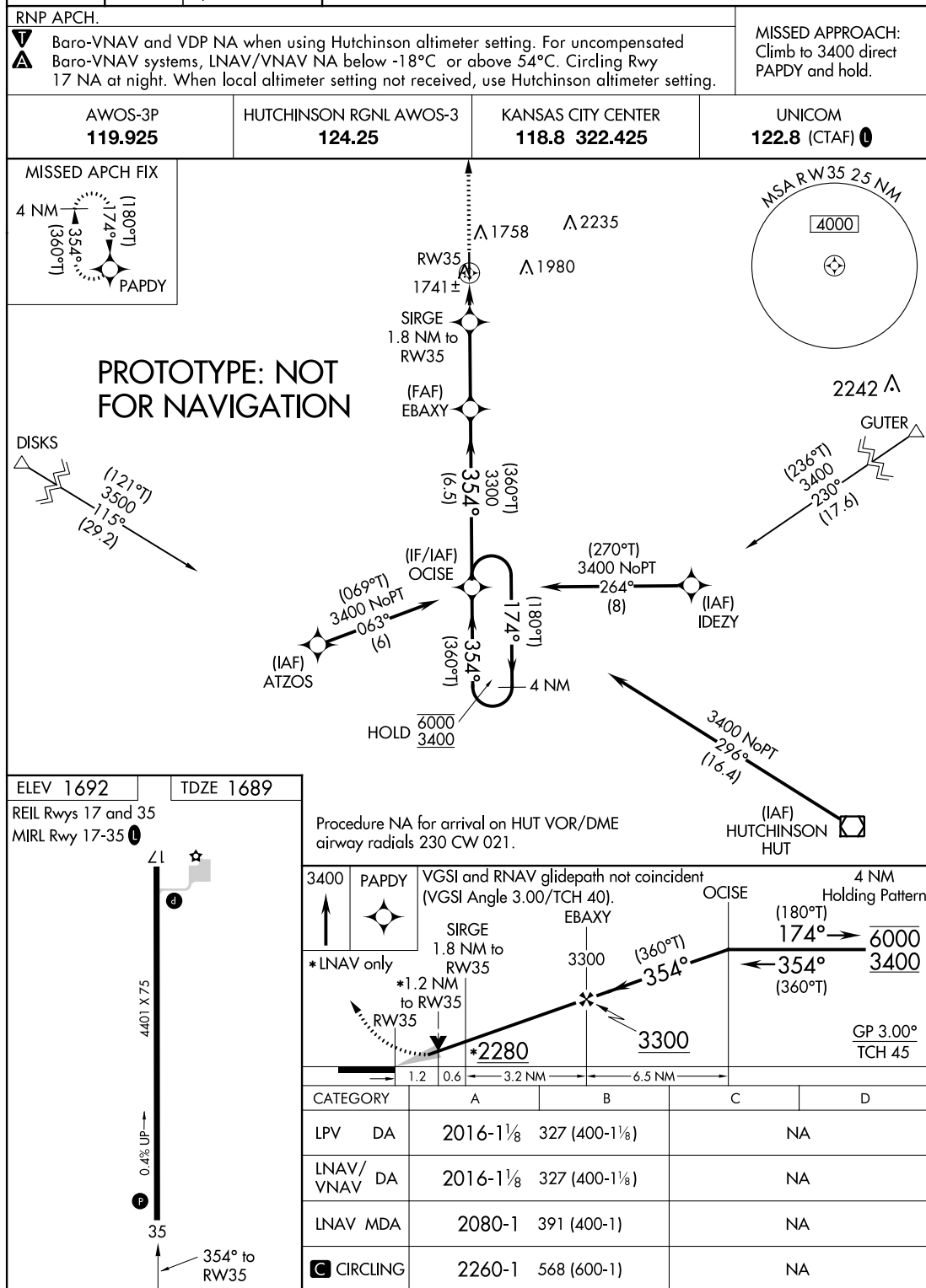
LYONS, KANSAS

AL-5982 (FAA)

FIG

| | | |
|--|------------------------|---|
| WAAS CH 42639 W35A | APP CRS 354° | Rwy Idg TDZE 1689 Apt Elev 1692 |
|--|------------------------|---|

RNAV (GPS) RWY 35 LYONS-RICE COUNTY MUNI (LYO)



AUTOMATED AL-5982 RNAV (GPS) RWY 35

NC-2
29 JUN 2018
COMPILER: CG
REVIEWER:
DBL CHKR:
EFF: FIG

LYONS, KANSAS

Orig-A FIG

38°20'N-98°14'W

LYONS-RICE COUNTY MUNI (LYO)
RNAV (GPS) RWY 35

NC-2, 21 JUN 2018 to 19 JUL 2018