


| | | | | | | |
|--|---------------|--------------------------------|---|--|---------------------------------------|-------------------------------------|
| Flight Procedure Tracking Form | | Action: FLIGHT CHECK | Task Type: IAP | Date Open: 02/06/2018 | Task #: 2018020634440201001 | Request #: 20180206344402 |
| Procedure: RNAV (GPS) RWY 17 AMDT 0A | | | Airport ID: KLYO | Airport: LYONS-RICE COUNTY MUNI | | Reimbursable #: NO |
| City: LYONS | ST: KS | GPS #: | Estimated Chart Date: 11/08/2018 | | FICO #: | |
| Fac ID: N/A | | Fac. Type: | | | Specialist: LUCAS MCCLOUD | |
| Procedure Review | | | | | | |
| | Rec'd | Rel'd | Full Name | Comments | | |
| Lead: | 02/07/2018 | 06/15/2018 | ROBERT HAMILTON | <div style="text-align: center;">  </div> | | |
| QA: | 06/15/2018 | | | | | |
| Liaison: | | | | | | |
| Procedure Comments: ENROUTE-NON Remark Type: INFORMATION FLT CHK: REQUEST TABLE TOP ONLY; FAS DATA/CRC REMAINDER CHANGED DUE TO RWY NUMBER CHANGE ONLY. PENDING KLYO AIRNAV DATA USED FOR AIRPORT AND RUNWAYS. CONTACT: ROBERT HAMILTON 405-954-4608; AJV-5422 POC. | | | | | | |

FIG

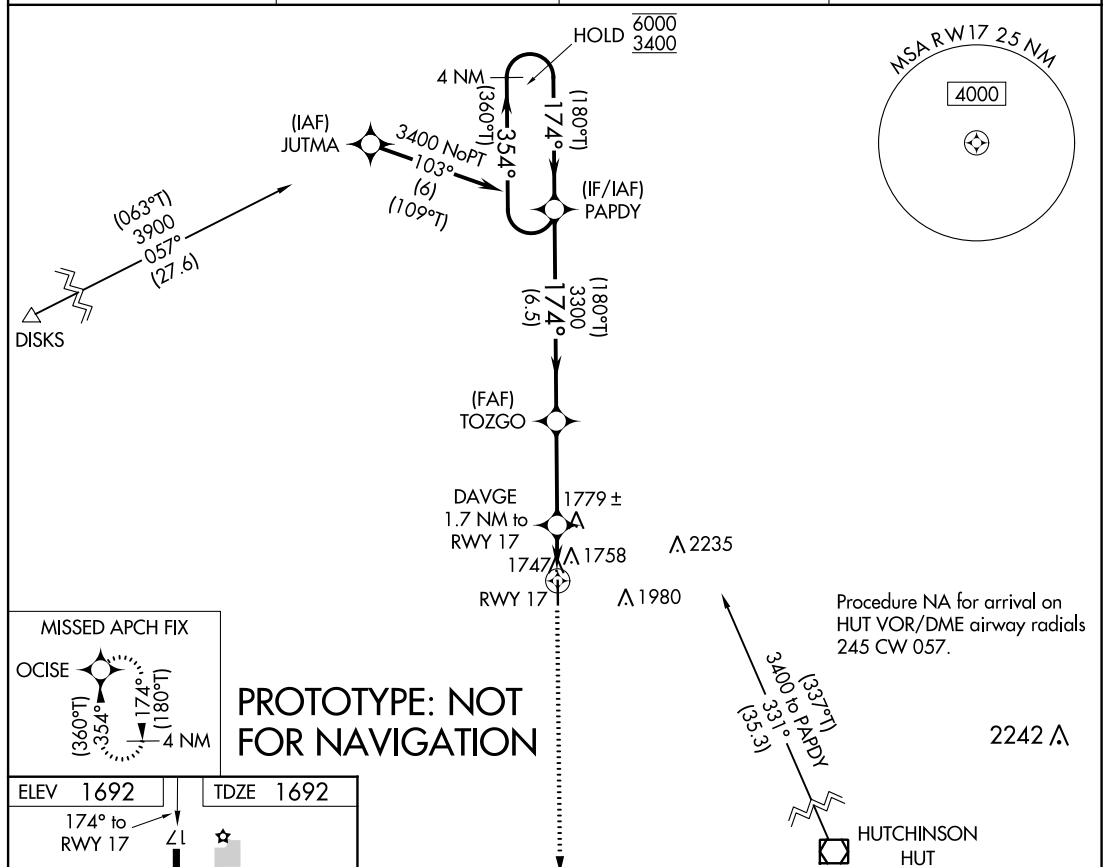
RNAV (GPS) RWY 17

LYONS-RICE COUNTY MUNI (LYO)

V Rwy 17 helicopter visibility reduction below 1 SM NA.
A Straight-in/Circling Rwy 17 NA at night.
When local altimeter setting not received, use Hutchinson altimeter setting.

MISSED APPROACH: Climb to 3400
direct OCISE and hold.

| | | | |
|---------------------------|---|--|---------------------------------|
| AWOS-3P 119.925 | HUTCHINSON RGNL AWOS-3 124.25 | KANSAS CITY CENTER 118.8 322.425 | UNICOM 122.8 (CTAF) U |
|---------------------------|---|--|---------------------------------|



ELEV 1692

TDZE 1692

174° to RWY 17

4401 X 75

0.4% UP

35

MIRL Rwy 17-35

REIL Rwy 17 and 35

[illegible]

LYONS-RICE COUNTY MUNI (LYO)
RNAV (GPS) RWY 17

AUTOMATED AL-5982 RNAV (GPS) RWY 17

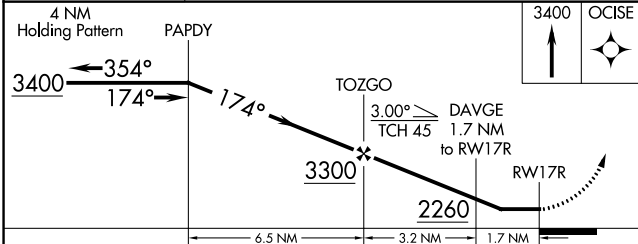
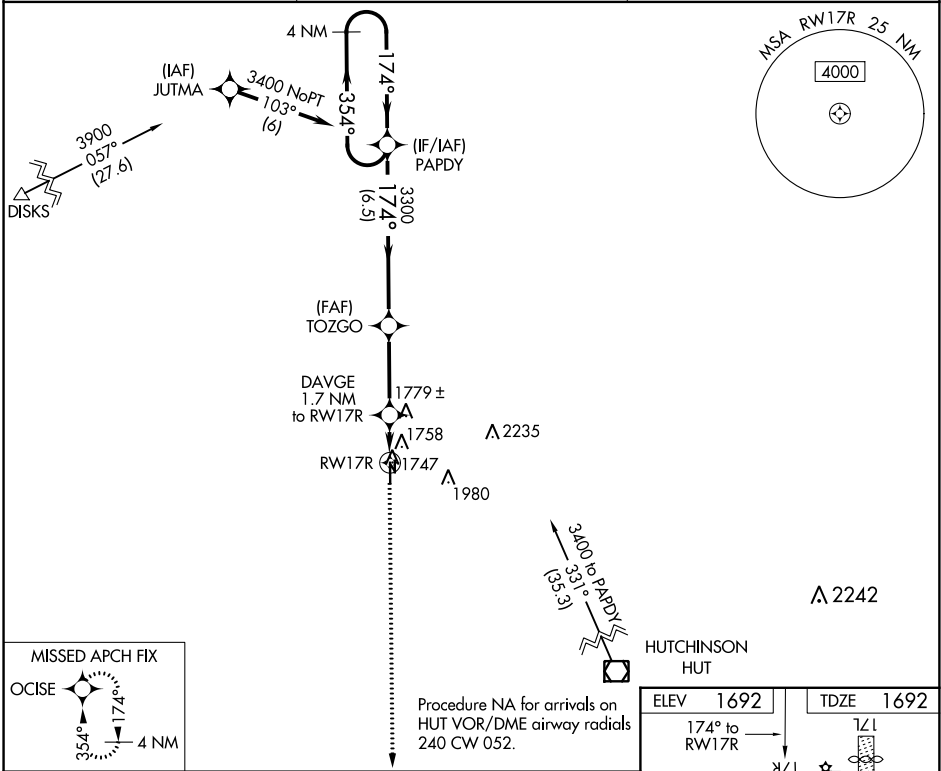
NC-2
29 JUN 2018
COMPILER: CG
REVIEWER:
DBL CHKR:
EFF: FIG

| | | | |
|--|------------------------|-----------------------------|---|
| WAAS CH 99339 W17A | APP CRS 174° | Rwy Idg TDZE Apt Elev | 3000 1692 1692 |
|--|------------------------|-----------------------------|---|

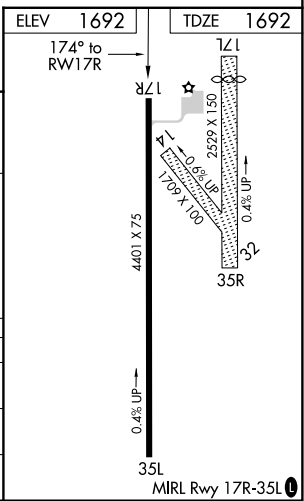
RNAV (GPS) RWY 17R
LYONS-RICE COUNTY MUNI (LYO)

| | |
|---|---|
| NA Circling NA to Rwy 14/32 and 17L/35R. Night landing: Rwy 17R NA. DME/DME RNP-0.3 NA. Helicopter visibility reduction below 1 SM NA. Use Hutchinson altimeter setting. | MISSED APPROACH: Climb to 3400 direct OCISE and hold. |
|---|---|

| | | |
|---|--|---------------------------------|
| HUTCHINSON RGNL AWOS-3 124.25 | KANSAS CITY CENTER 118.8 322.425 | UNICOM 122.8 (CTAF) 0 |
|---|--|---------------------------------|



| CATEGORY | A | B | C | D |
|-------------------|--------|-------------|---|----|
| LP MDA | 2080-1 | 388 (400-1) | | NA |
| LNAV MDA | 2120-1 | 428 (500-1) | | NA |
| C CIRCLING | 2260-1 | 568 (600-1) | | NA |



NC-2, 21 JUN 2018 to 19 JUL 2018

NC-2, 21 JUN 2018 to 19 JUL 2018